

**PACIFIC COMMERCIAL BROKERS**  
**REAL ESTATE, MERGERS & ACQUISITIONS**

**Madrona Retail/Office Complex**

**FOR LEASE**

1422 34th Avenue | Seattle, WA 98122



Well located office/loft space situated in the desirable Madrona neighborhood. Creative and versatile space presents soaring, 16' ceilings, nicely appointed kitchen area, mezzanine and ample storage areas with built-ins for laundry and/or document processing. Private walk-way/courtyard entrance fronting large double doors.

**SPACE DETAILS**

**Size:** 2,152SF

**Lease Rate:** \$28.00

**Lease Basis:** NNN (approx.. \$9.25ft/yr.)  
Incl; water/sewer/electric/landscaping/taxes/insurance

**Term:** Minimum 3 years

*For more Information  
Contact:*

**Tom O'Brien**  
(253) 988-0080 cel  
(253) 507-5442 wk  
tom@paccombros.com



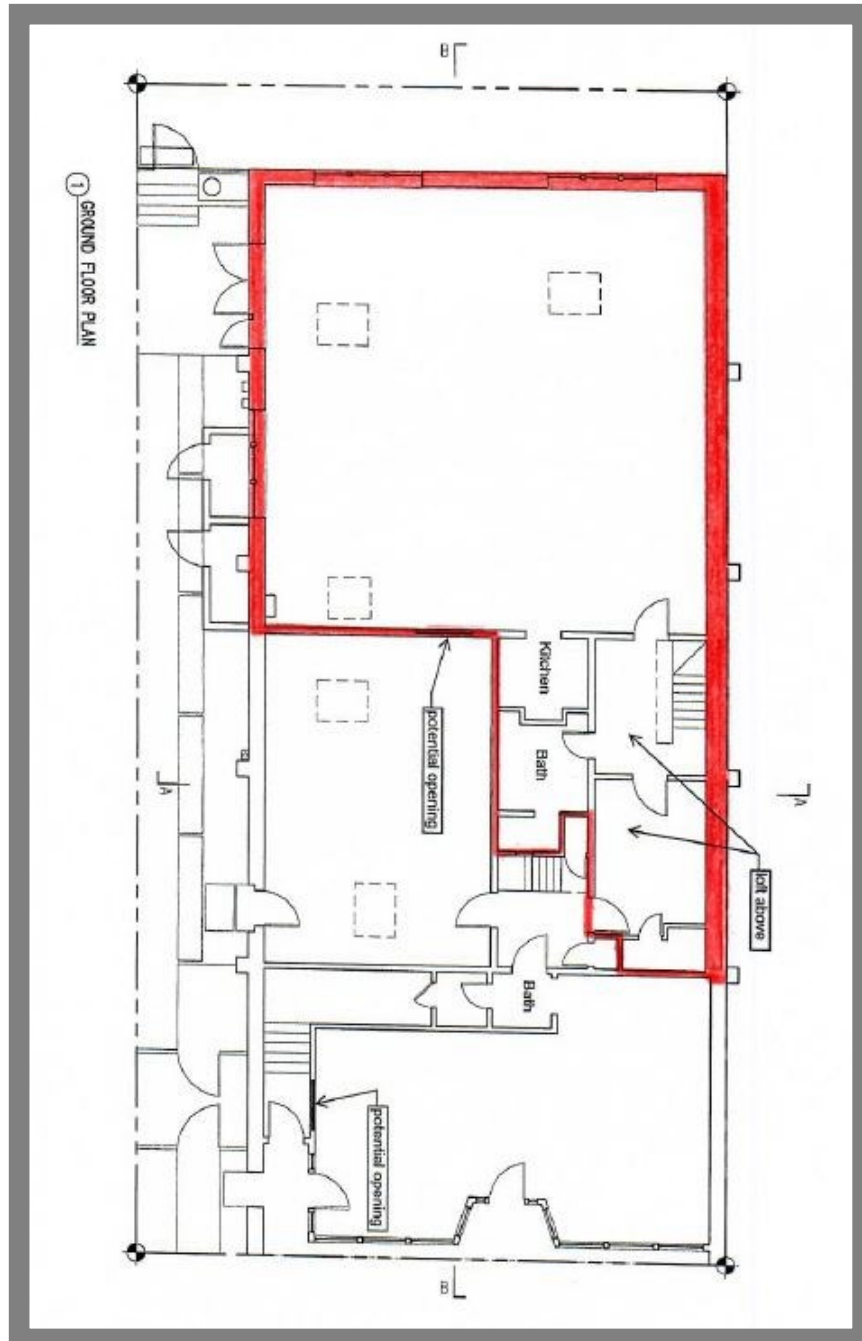
This information has been secured from sources we believe to be reliable, but we make no representations or warranties, expressed or implied, as to the accuracy of the information. References to square footage or age, and sales are approximate. Buyer must verify all information and bears all risk for inaccuracies.

**PACIFIC COMMERCIAL BROKERS**  
**REAL ESTATE, MERGERS & ACQUISITIONS**

**Madrona Retail/Office Complex**

**FOR LEASE**

1422 34th Avenue | Seattle, WA 98122



This information has been secured from sources we believe to be reliable, but we make no representations or warranties, expressed or implied, as to the accuracy of the information. References to square footage or age, and sales are approximate. Buyer must verify all information and bears all risk for inaccuracies.

**PACIFIC COMMERCIAL BROKERS**  
**REAL ESTATE, MERGERS & ACQUISITIONS**

**Madrona Retail/Office Complex**

**FOR LEASE**

1422 34th Avenue | Seattle, WA 98122

