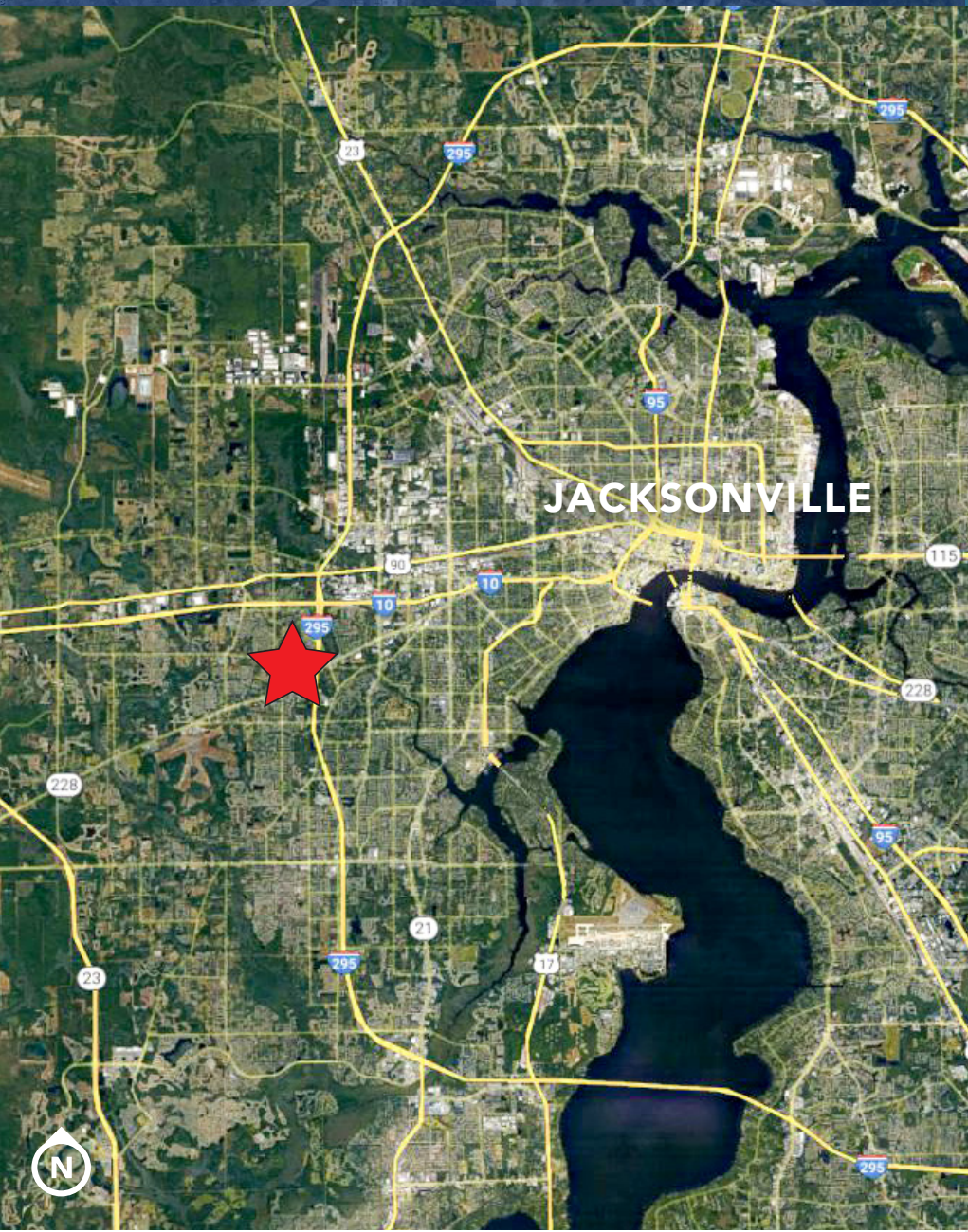


VACANT LAND FOR SALE

Normandy Avenue, Jacksonville, FL 32221

Prime development opportunity at the major intersection of I-295 and Normandy Blvd in Jacksonville, FL



ASKING PRICE:

\$550,000



LAND AREA:

16.29± acres total



ZONING:

CCG-1; RLD-60



ACCESS:

Easy access to I-295, I-10 and Downtown Jacksonville



HARBERT
REALTY SERVICES

JOSH SMITH

jsmith@harbertrealty.com | 407.377.4050

DAMIEN MADSEN

dmadsen@harbertrealty.com | 407.256.2844

For More Information: HarbertRealty.com

2450 Maitland Ctr Pkwy, Suite 200, Maitland, FL 32751

The information contained herein has been obtained from sources deemed reliable, however, HRS makes no guarantees, warranties or representation as to its completeness or accuracy thereof. The presentation of this property is submitted subject to errors, omissions, change of price or conditions, prior to sale or lease or withdrawal without notice.



VACANT LAND FOR SALE

Normandy Avenue, Jacksonville, FL 32221

AREA OVERVIEW

DEMOGRAPHICS:

POPULATION

1 miles **8,397**
 3 miles **64,782**
 5 miles **164,677**

AVERAGE HH INCOME

1 miles **\$59,697**
 3 miles **\$65,115**
 5 miles **\$68,876**

DAYTIME BUSINESS POPULATION

1 miles **4,102**
 3 miles **26,498**
 5 miles **63,267**



JOSH SMITH
 jsmith@harbertrealty.com | 407.377.4050

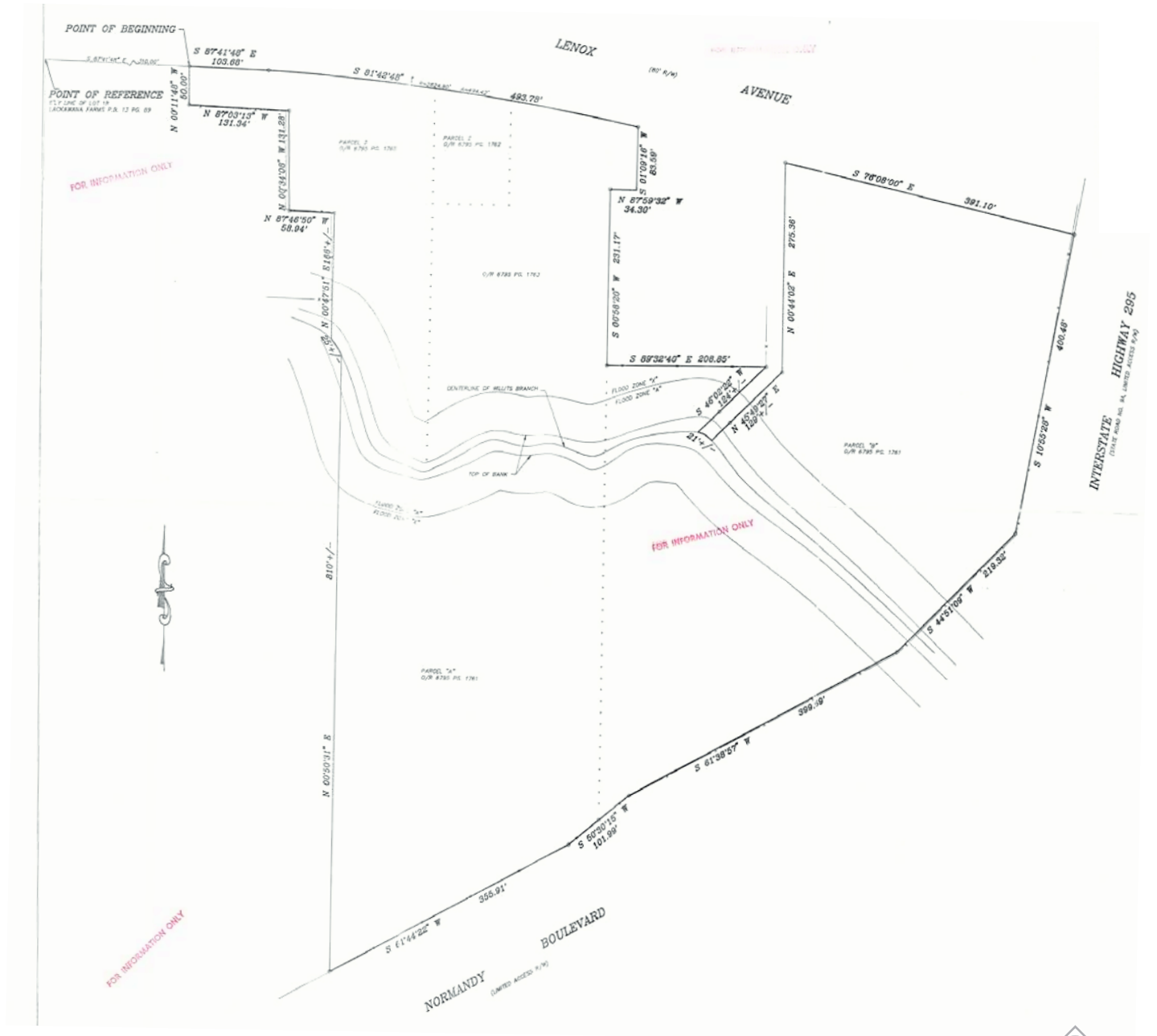
DAMIEN MADSEN
 dmadsen@harbertrealty.com | 407.256.2844

For More Information: HarbertRealty.com
 2450 Maitland Center Pkwy, Suite 200
 Maitland, FL 32751

VACANT LAND FOR SALE

Normandy Avenue, Jacksonville, FL 32221

BOUNDARY SURVEY



JOSH SMITH
jsmith@harbertrealty.com | 407.377.4050

DAMIEN MADSEN
dmadsen@harbertrealty.com | 407.256.2844

For More Information: HarbertRealty.com
2450 Maitland Center Pkwy, Suite 200
Maitland, FL 32751

VACANT LAND FOR SALE

Normandy Avenue, Jacksonville, FL 32221

BILLBOARD LOCATIONS

There are 3 billboards on the property which are not for sale and will require an easement for future Seller access.



HARBERT
REALTY SERVICES

JOSH SMITH

jsmith@harbertrealty.com | 407.377.4050

DAMIEN MADSEN

dmadsen@harbertrealty.com | 407.256.2844

For More Information: HarbertRealty.com

2450 Maitland Center Pkwy, Suite 200
Maitland, FL 32751