

# OFFICE SPACE FOR LEASE



## MAITLAND GREEN II

2290 Lucien Way  
Maitland, FL 32751

Maitland Green II is a 4-story Class A office building with approximately 84,000 RSF and available space ranging from 1,187 - 6,908 RSF.

Located in the highly desirable Maitland Center Office Park, this corporate building provides efficient office suites for all professional businesses.

[Virtual Tour](#)

[Drone Video](#)

## NEW BROKER INCENTIVE

- 5% Commission
- 100% Paid at Signing

RSF Available  
**1,187 - 5,183**



For more information, contact:  
**Damien Madsen**  
(407) 256.2844  
DMadsen@harbertrealty.com

For more information, contact:  
**Josh Smith**  
(407) 377.4050  
JSmith@harbertrealty.com

Property Owned &  
Operated by:



## SPACE AVAILABLE

Suite	RSF
125	5,183
150	4,676
220	1,187
250	4,181



## BUILDING FEATURES & AMENITIES

- ▶ 84,000 RSF Class A 4-Story Building
- ▶ On-Site Institutional Property Management
- ▶ 4/1000 Parking Ratio
- ▶ Building Cafe located in Adjacent Building
- ▶ **New Building Feature: Advanced and Targeted Cleanings of Common Area Spaces**
- ▶ Large Centrally Located Courtyard for Collaborative Distancing Area



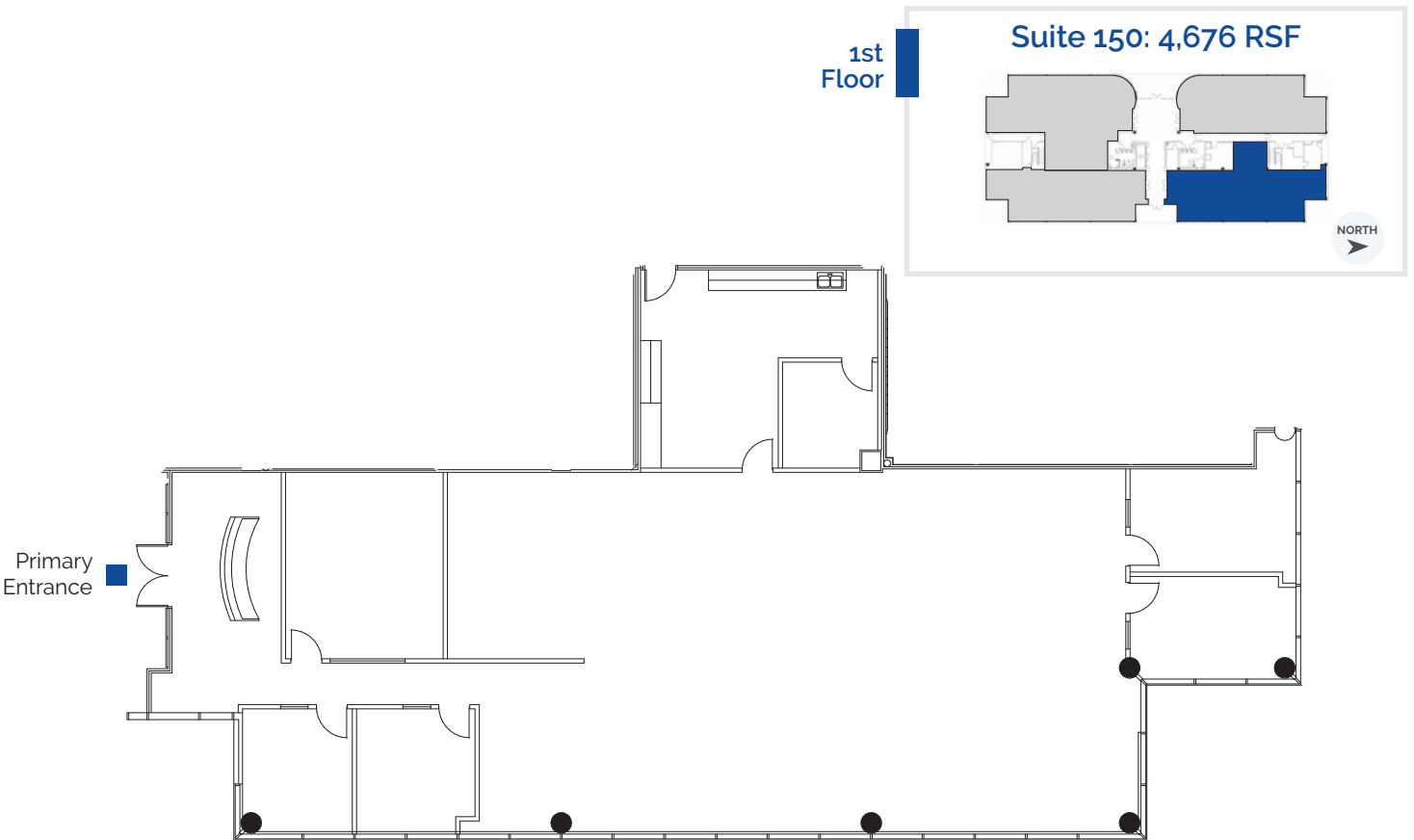
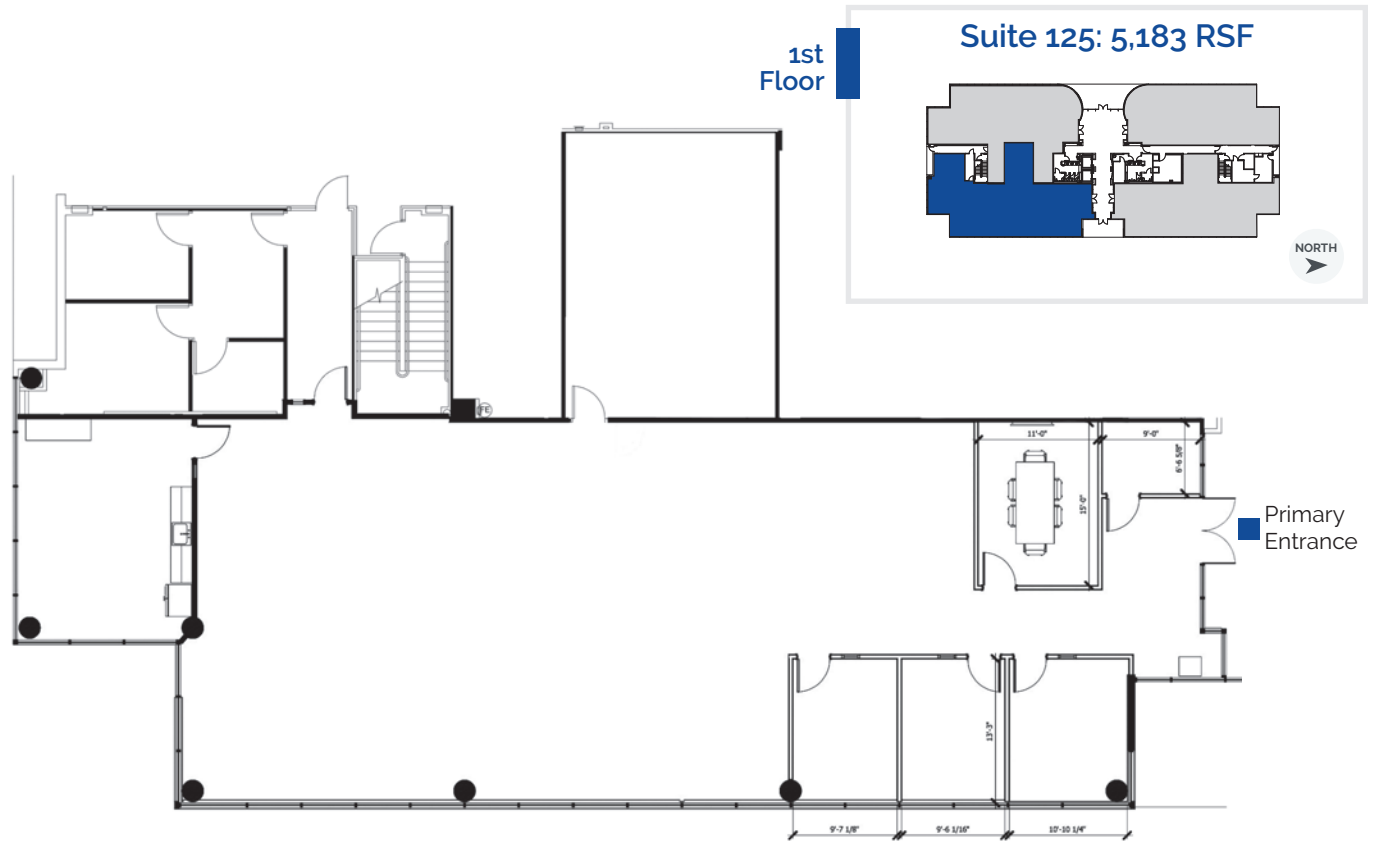
For more information, contact:

**Damien Madsen**  
 (407) 256.2844  
 DMadsen@harbertrealty.com

**Josh Smith**  
 (407) 377.4050  
 JSmith@harbertrealty.com

Property Owned &  
 Operated by:



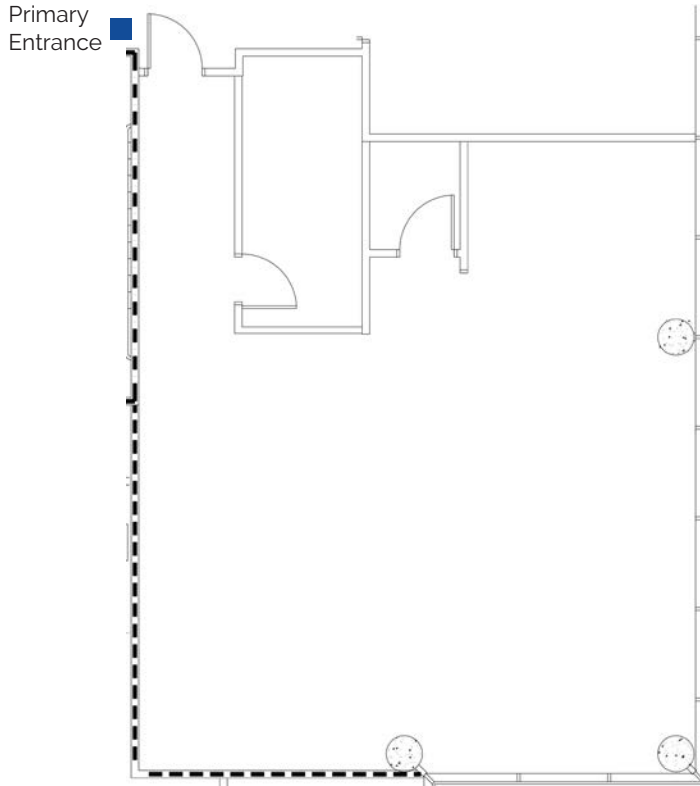


For more information, contact:  
**Damien Madsen**  
(407) 256.2844  
DMadsen@harbertrealty.com

**Josh Smith**  
(407) 377.4050  
JSmith@harbertrealty.com

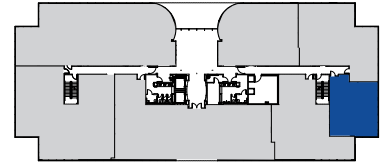
Property Owned & Operated by:





2nd Floor

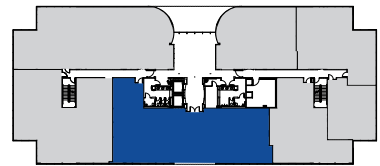
Suite 220: 1,187 RSF



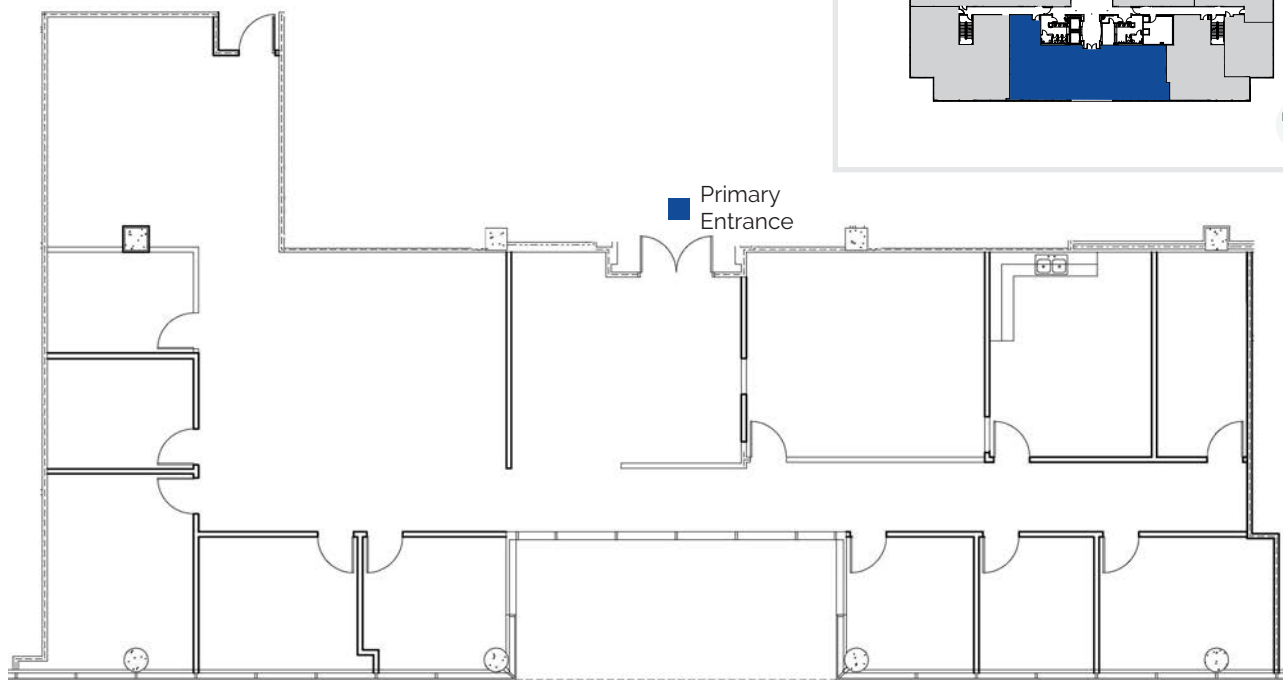
NORTH

2nd Floor

Suite 250: 4,181 RSF



NORTH



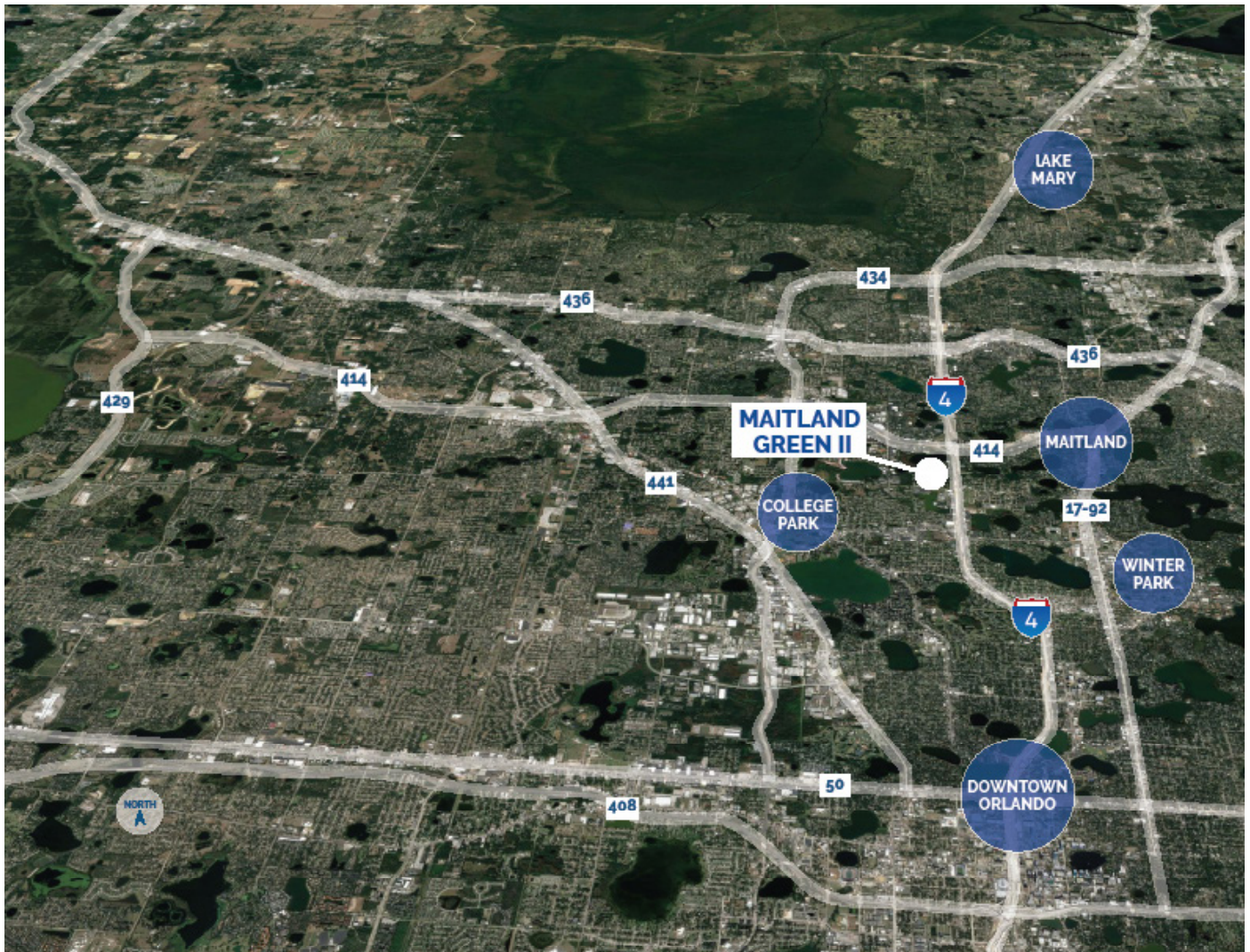
For more information, contact:

**Damien Madsen**  
(407) 256.2844  
DMadsen@harbertrealty.com

**Josh Smith**  
(407) 377.4050  
JSmith@harbertrealty.com

Property Owned &  
Operated by:





## LOCATION HIGHLIGHTS

- ▶ Well-positioned within Maitland Center Office Park, one of Orlando's largest office submarkets
- ▶ Conveniently less than a half mile from I-4 & providing easy access to Downtown Orlando
- ▶ Close to business hotels, restaurants, retail and the RDV Sportsplex
- ▶ Ideally located in Central Florida's top executive housing market & the following established neighborhoods
  - Maitland: 3-Miles
  - Winter Park: 5-Miles
  - College Park: 7-Miles
  - Downtown: 8-Miles
  - Lake Mary: 12-Miles

For more information, contact:

**Damien Madsen**  
 (407) 256.2844  
 DMadsen@harbertrealty.com

**Josh Smith**  
 (407) 377.4050  
 JSmith@harbertrealty.com

Property Owned &  
 Operated by:

