



# FOR SALE

23 S Osceola Ave, Orlando, FL 32801

Walking distance to all Thornton Park eateries and retail

## PROPERTY HIGHLIGHTS

- 1,656± sf two-story office building
- On-site parking
- Freestanding, easy in and out access
- Opportunity for user to occupy space within Downtown Orlando



### SALE PRICE:

\$819,720



### SQUARE FOOTAGE:

1,656± rsf

0.11 acre site



### LOCATION:

Centrally located in the heart of Thornton Park



### YEAR BUILT:

1924



**HARBERT**  
REALTY SERVICES

**DAMIEN MADSEN**

[dmadsen@harbertrealty.com](mailto:dmadsen@harbertrealty.com) | 407.256.2844

**JOSH SMITH**

[jsmith@harbertrealty.com](mailto:jsmith@harbertrealty.com) | 407.377.4050

**For More Information: [HarbertRealty.com](http://HarbertRealty.com)**  
400 S Park Ave, Suite 225, Winter Park, FL 32789

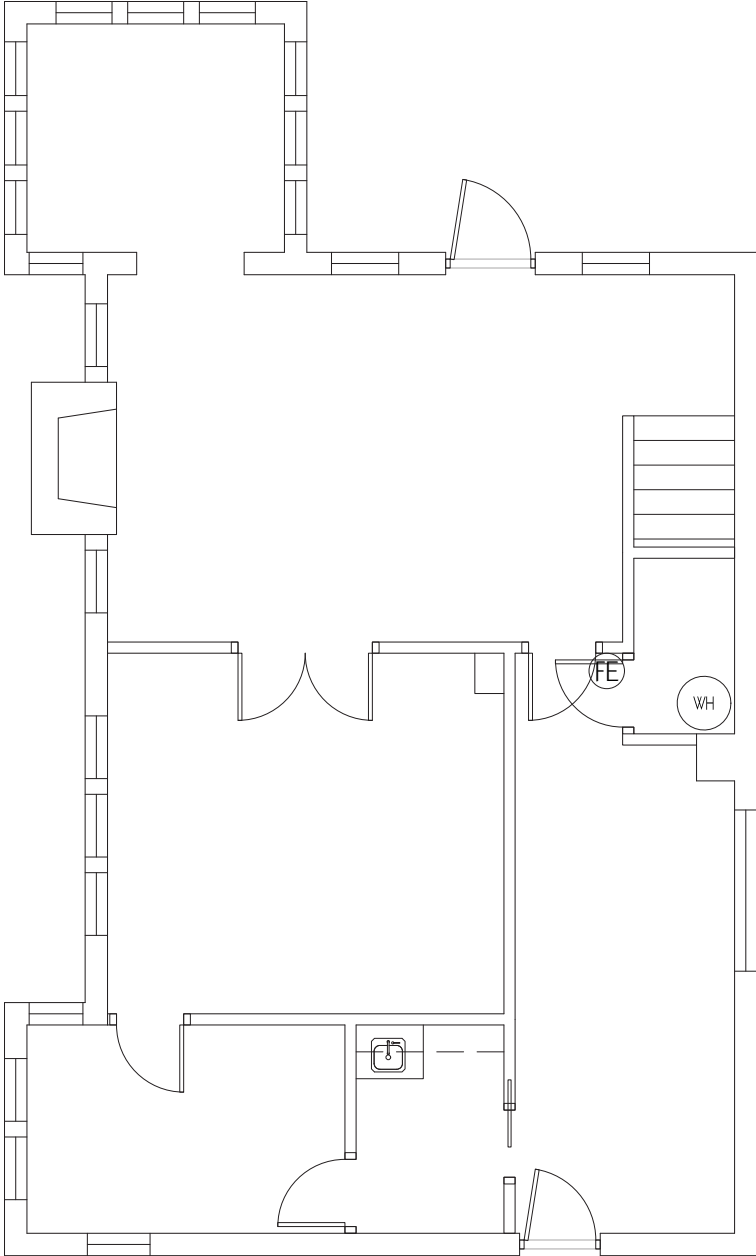
The information contained herein has been obtained from sources deemed reliable, however, HRS makes no guarantees, warranties or representation as to its completeness or accuracy thereof. The presentation of this property is submitted subject to errors, omissions, change of price or conditions, prior to sale or lease or withdrawal without notice.

FOR SALE

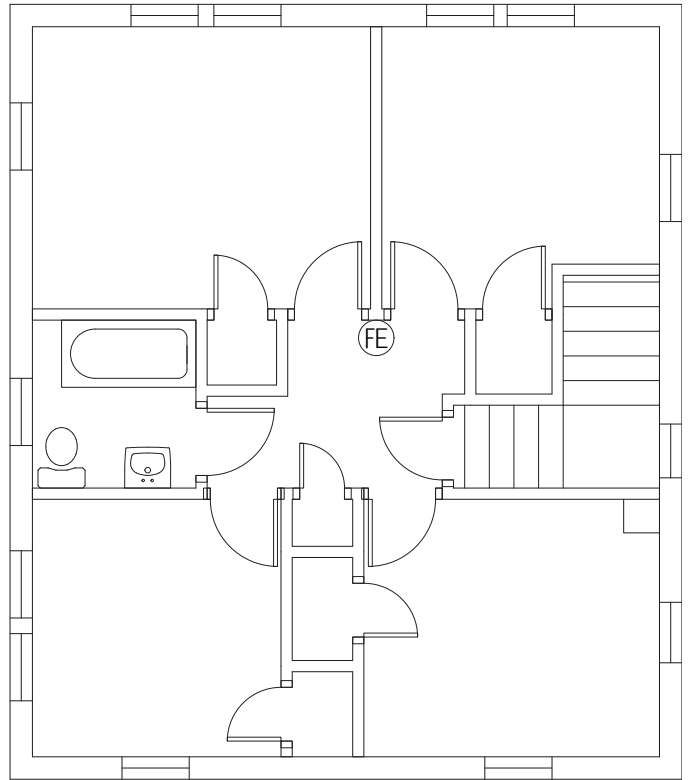
23 S Osceola Ave, Orlando, FL 32801

FLOOR PLANS

### First Floor



### Second Floor



**HARBERT**  
REALTY SERVICES

**DAMIEN MADSEN**

dmadsen@harbertrealty.com | 407.256.2844

**JOSH SMITH**

jsmith@harbertrealty.com | 407.377.4050

*For More Information: [HarbertRealty.com](http://HarbertRealty.com)*

400 S Park Ave, Suite 225, Winter Park, FL 32789

FOR SALE

23 S Osceola Ave, Orlando, FL 32801

PHOTOS



HARBERT  
REALTY SERVICES

DAMIEN MADSEN

[dmadsen@harbertrealty.com](mailto:dmadsen@harbertrealty.com) | 407.256.2844

JOSH SMITH

[jsmith@harbertrealty.com](mailto:jsmith@harbertrealty.com) | 407.377.4050

For More Information: [HarbertRealty.com](http://HarbertRealty.com)  
400 S Park Ave, Suite 225, Winter Park, FL 32789