

Mixed-Use Property for Sale

742 & 746 S. Meade Street

South Bend, Indiana 46619

**NAI**Cressy

COMMERCIAL REAL ESTATE SERVICES, WORLDWIDE

Perfect for a Day Care Facility and Apartment Units



## Snapshot

Building:	5,466 SF
Land:	0.22 Acres
Zoning:	Urban Neighborhood Flex
Utilities:	Municipal
List Price:	\$150,000

## Property Details

Mixed-use building for sale on west side of South Bend. The first floor and adjacent fenced in area is perfect for a day care. The upper levels have been framed out for 2 apartments with 3-4 bedrooms each - both with separate entrances. There is a garage available for use that is currently being rented to month-to-month tenants. The basement can also be used for storage and has an exiting kitchen that could be used for those searching for shared kitchen space. [VIEW PROPERTY ONLINE](#)

4100 Edison Lakes Parkway, Suite 350  
Mishawaka, Indiana  
574.271.4060  
574.271.4292 Fax  
[www.cressy.com](http://www.cressy.com)

Global Brokerage Division of Cressy Commercial Real Estate

**CHRISTOPHER J. BARTH**  
Broker  
574.485.1553  
[cbarth@cressy.com](mailto:cbarth@cressy.com)

Information furnished regarding property for sale, rental or financing is from sources deemed reliable. But no warranty or representation is made as to the accuracy thereof and same is submitted subject to errors, omissions, change of price, rental or other conditions, prior sale, leased, financing or withdrawal without notice. No liability of any kind is to be imposed on the broker herein.

Mixed-Use Property for Sale

742 & 746 S. Meade Street

South Bend, Indiana 46619

# NAI Cressy

COMMERCIAL REAL ESTATE SERVICES, WORLDWIDE

Exterior Property Photos



4100 Edison Lakes Parkway, Suite 350

Mishawaka, Indiana

574.271.4060

574.271.4292 Fax

[www.cressy.com](http://www.cressy.com)

Global Brokerage Division of Cressy Commercial Real Estate

**CHRISTOPHER J. BARTH**

Broker

574.485.1553

[cbarth@cressy.com](mailto:cbarth@cressy.com)

Information furnished regarding property for sale, rental or financing is from sources deemed reliable. But no warranty or representation is made as to the accuracy thereof and same is submitted subject to errors, omissions, change of price, rental or other conditions, prior sale, leased, financing or withdrawal without notice. No liability of any kind is to be imposed on the broker herein.

Mixed-Use Property for Sale

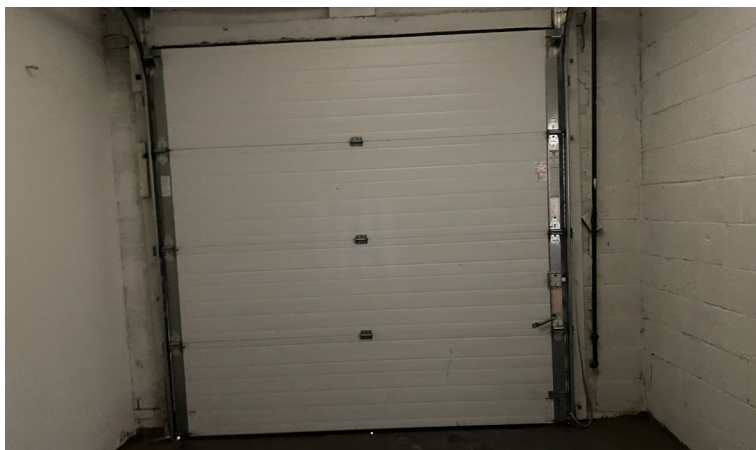
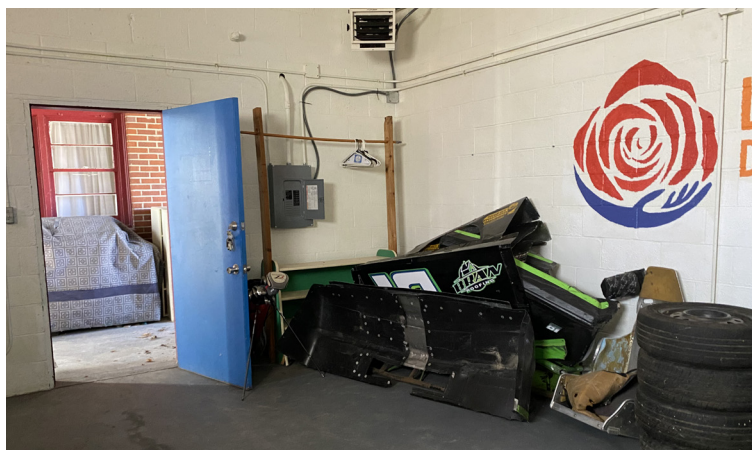
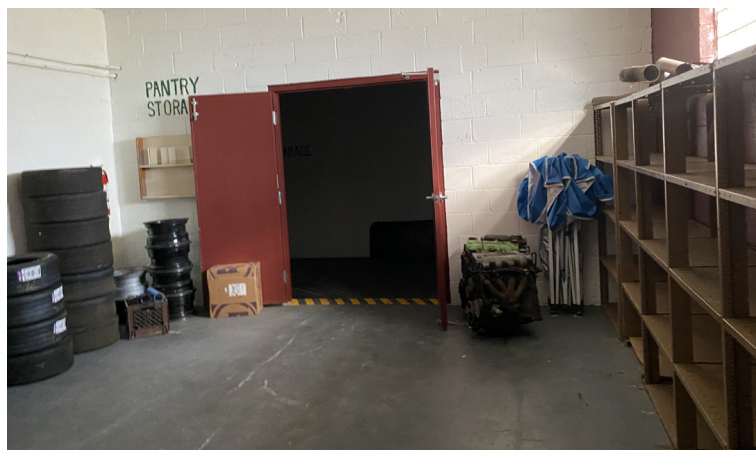
742 & 746 S. Meade Street

South Bend, Indiana 46619

**NAI**Cressy

COMMERCIAL REAL ESTATE SERVICES, WORLDWIDE

Interior Property Photos



4100 Edison Lakes Parkway, Suite 350

Mishawaka, Indiana

574.271.4060

574.271.4292 Fax

[www.cressy.com](http://www.cressy.com)

Global Brokerage Division of Cressy Commercial Real Estate

**CHRISTOPHER J. BARTH**

Broker

574.485.1553

[cbarth@cressy.com](mailto:cbarth@cressy.com)

Information furnished regarding property for sale, rental or financing is from sources deemed reliable. But no warranty or representation is made as to the accuracy thereof and same is submitted subject to errors, omissions, change of price, rental or other conditions, prior sale, leased, financing or withdrawal without notice. No liability of any kind is to be imposed on the broker herein.

Mixed-Use Property for Sale

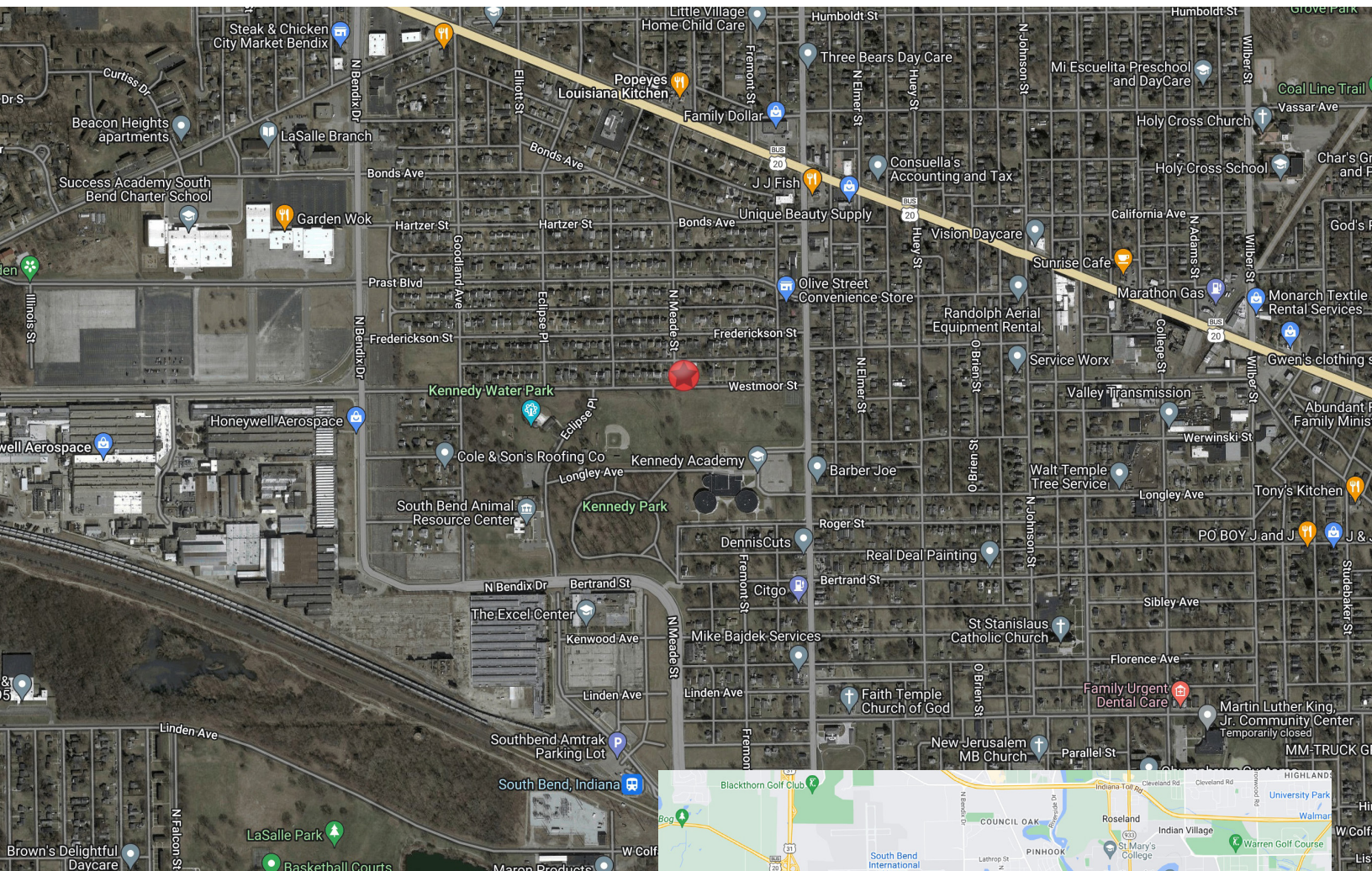
742 & 746 S. Meade Street

South Bend, Indiana 46619



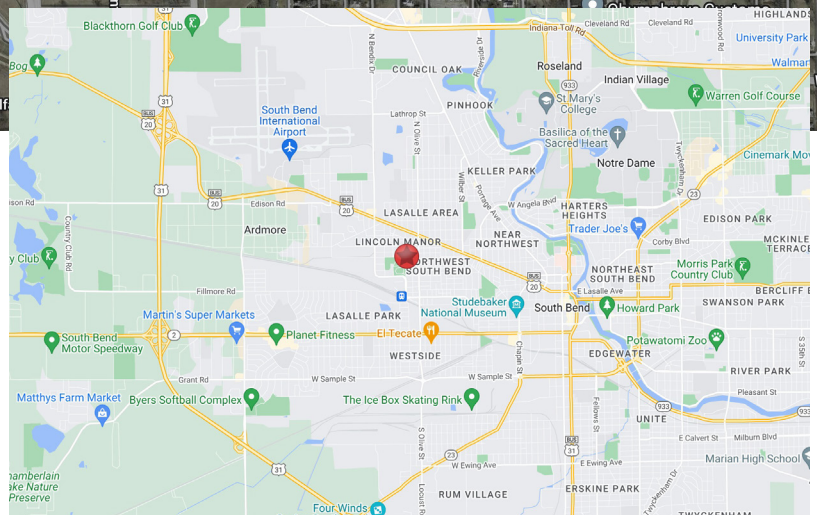
COMMERCIAL REAL ESTATE SERVICES, WORLDWIDE

Located on South Bend's West Side With Easy Access to Downtown and SR 23



## Location

This property is located on the corner of S. Meade Street and W. Dunham Street on the west side of South Bend. It is just off Western Avenue (SR 2) and Sample Street. It is surrounded by residential neighborhoods and local eateries. It is 1.5 miles from SR 23 and 2.5 miles from US 31 providing very easy access to downtown South Bend, and South Bend International Airport.



4100 Edison Lakes Parkway, Suite 350  
Mishawaka, Indiana  
574.271.4060  
574.271.4292 Fax  
www.cressy.com

Global Brokerage Division of Cressy Commercial Real Estate

**CHRISTOPHER J. BARTH**  
Broker  
574.485.1553  
cbarth@cressy.com

Information furnished regarding property for sale, rental or financing is from sources deemed reliable. But no warranty or representation is made as to the accuracy thereof and same is submitted subject to errors, omissions, change of price, rental or other conditions, prior sale, leased, financing or withdrawal without notice. No liability of any kind is to be imposed on the broker herein.