

Retail Space for Lease

Merrifield Plaza  
900 S Merrifield Ave.

Mishawaka, Indiana 46544



COMMERCIAL REAL ESTATE SERVICES, WORLDWIDE

## 2 Suites Available at Kroger Anchored Retail Center



### Snapshot

Building:	62,577 SF
Available:	Suite #928 - 900 SF Suite #930 - 1,500 SF (end cap)
Land:	7.36 Acres
Zoning:	C-2
Utilities:	Municipal
Year Built:	1987
Lease Rate:	\$9.00 - \$15.00 PSF NNN

### Property Details

Well maintained and managed retail shopping center anchored by Kroger. Two suites are available: Suite #928 - 900 SF, and Suite #930 - 1,500 SF (end cap position). The property is surrounded by single and multi-family residential developments and has abundant on-site parking.



4100 Edison Lakes Parkway, Suite 350  
Mishawaka, Indiana  
574.271.4060  
574.271.4292 Fax  
www.cressy.com

A Global Division of Cressy Commercial Real Estate

**JOHN MESTER**  
Senior Broker, Retail/Investments  
574.485.1501  
jmester@cressy.com

**SAMUEL CRESSY**  
Broker  
574.485.1556  
scressy@cressy.com

Information furnished regarding property for sale, rental or financing is from sources deemed reliable. But no warranty or representation is made as to the accuracy thereof and same is submitted subject to errors, omissions, change of price, rental or other conditions, prior sale, leased, financing or withdrawal without notice. No liability of any kind is to be imposed on the broker herein.

Retail Space for Lease

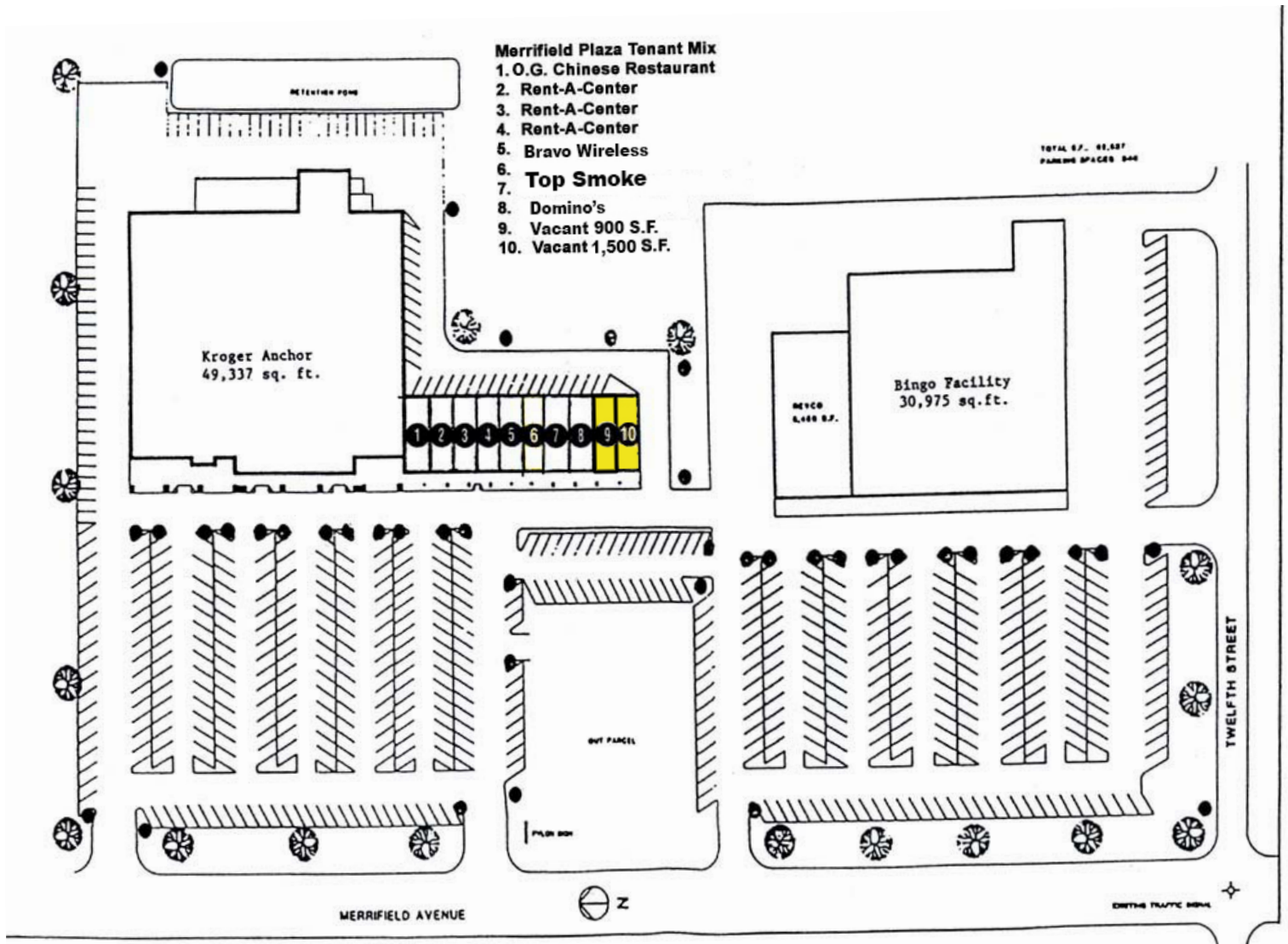
Merrifield Plaza  
900 S Merrifield Ave.

Mishawaka, Indiana 46544



COMMERCIAL REAL ESTATE SERVICES, WORLDWIDE

Site Plan



4100 Edison Lakes Parkway, Suite 350  
Mishawaka, Indiana  
574.271.4060  
574.271.4292 Fax  
www.cressy.com

A Global Division of Cressy Commercial Real Estate

**JOHN MESTER**  
Senior Broker, Retail/Investments  
574.485.1501  
jmester@cressy.com

**SAMUEL CRESSY**  
Broker  
574.485.1556  
scressy@cressy.com

Information furnished regarding property for sale, rental or financing is from sources deemed reliable. But no warranty or representation is made as to the accuracy thereof and same is submitted subject to errors, omissions, change of price, rental or other conditions, prior sale, leased, financing or withdrawal without notice. No liability of any kind is to be imposed on the broker herein.

Retail Space for Lease

Merrifield Plaza  
900 S Merrifield Ave.

Mishawaka, Indiana 46544



COMMERCIAL REAL ESTATE SERVICES, WORLDWIDE

## Suite Photos



4100 Edison Lakes Parkway, Suite 350  
Mishawaka, Indiana  
574.271.4060  
574.271.4292 Fax  
www.cressy.com

A Global Division of Cressy Commercial Real Estate

**JOHN MESTER**  
Senior Broker, Retail/Investments  
574.485.1501  
jmester@cressy.com

**SAMUEL CRESSY**  
Broker  
574.485.1556  
scressy@cressy.com

Information furnished regarding property for sale, rental or financing is from sources deemed reliable. But no warranty or representation is made as to the accuracy thereof and same is submitted subject to errors, omissions, change of price, rental or other conditions, prior sale, leased, financing or withdrawal without notice. No liability of any kind is to be imposed on the broker herein.

Retail Space for Lease

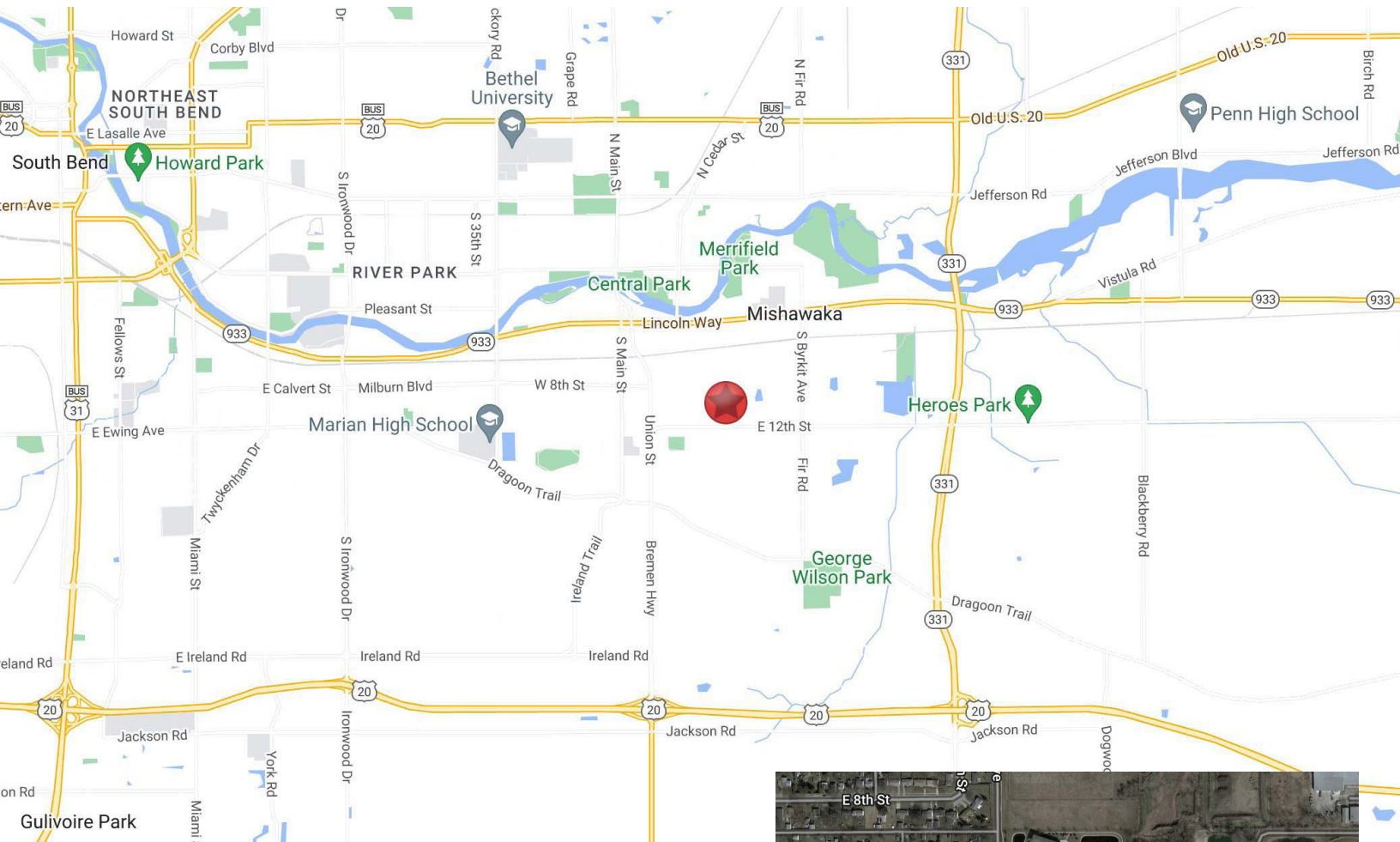
Merrifield Plaza  
900 S Merrifield Ave.

Mishawaka, Indiana 46544



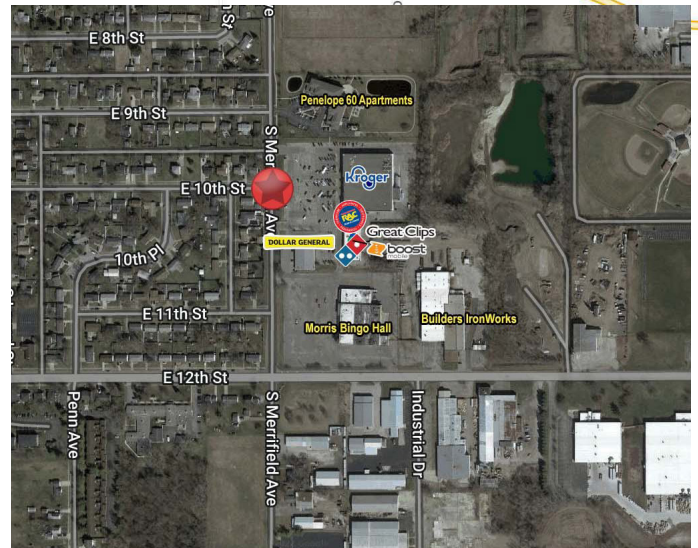
COMMERCIAL REAL ESTATE SERVICES, WORLDWIDE

**Great Neighborhood Environment with Excellent Walk-in Traffic**



**Location**

Merrifield Plaza is located on Merrifield Ave. between 12th and 6th Streets. Surrounded by single and multi-family neighborhoods, this location has great demographics and visibility on the south side of Mishawaka. There is a free standing Dollar General building on-site and it is within minutes to IN-331, IN-933 and US 20.



2021 DEMOGRAPHICS	1 MILE	3 MILE	5 MILE
POPULATION	10,685	61,073	138,085
NUMBER OF HOUSEHOLDS	4,409	26,868	56,394
AVERAGE HOUSEHOLD INCOME	\$50,734	\$59,681	\$65,429

4100 Edison Lakes Parkway, Suite 350  
Mishawaka, Indiana  
574.271.4060  
574.271.4292 Fax  
www.cressy.com

A Global Division of Cressy Commercial Real Estate

**JOHN MESTER**  
Senior Broker, Retail/Investments  
574.485.1501  
jmester@cressy.com

**SAMUEL CRESSY**  
Broker  
574.485.1556  
scressy@cressy.com

Information furnished regarding property for sale, rental or financing is from sources deemed reliable. But no warranty or representation is made as to the accuracy thereof and same is submitted subject to errors, omissions, change of price, rental or other conditions, prior sale, leased, financing or withdrawal without notice. No liability of any kind is to be imposed on the broker herein.