



15460 W CAPITOL DRIVE
BROOKFIELD, WI 53005

FEATURES

Highly accessible location of W Capitol Drive and Pilgrim Road in Brookfield. The property is nestled in the back of the lot and offers serene views.

The building currently houses 8 tenants.

Join this business community and be an owner-occupant or an investor!

Suite 110: 1,333 SF Currently set up as a salon. Available in 60 days.

Small Office Suites: 200A (143 SF), 200C (163 SF), and 200D (110 SF) Available Immediately.

Zoning: **O&LB Office and Limited Business**

Sewer: **Municipal / Water: Municipal**

A/C: **Yes**

Parking Spaces: **+/- 40 Surface Spaces**

Restrooms: **(Common) Men's and Women's on Each Floor**

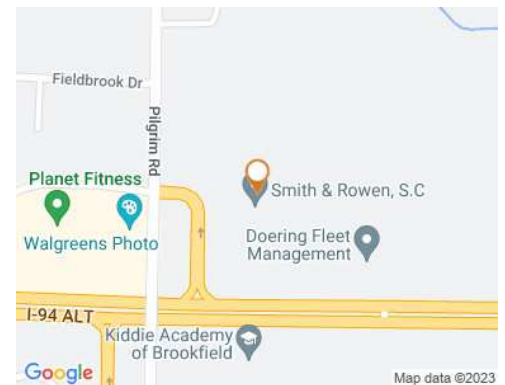
Elevator: **Yes**

Traffic Count: **37,000 Vehicles Per Day (WI DOT)**

Tax Key #: **BRC1015999012**

Property Taxes: **\$28,394.47 (2022)**

Listing : **4656**



OFFICE LEASE OR SALE

Total SF: **20,288**

Available SF: **1,749**

Min Contiguous SF: **110**

Max Contiguous SF: **1,333**

Total Acres **1.91**

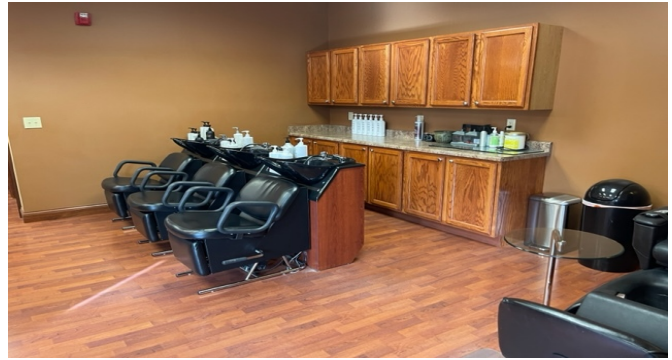
Lease Rate: **\$18.00 PSF Gross**

Sale Price: **\$2,700,000.00**

Colleen Geiger, Sales Agent
262-695-8800
cgeiger@judsonrealestate.com

Will Schlosser, Sales Agent
262-695-8800
wschlosser@judsonrealestate.com

Judson & Associates, S.C.
2831 N. Grandview Blvd, Suite 222
Pewaukee, WI 53072

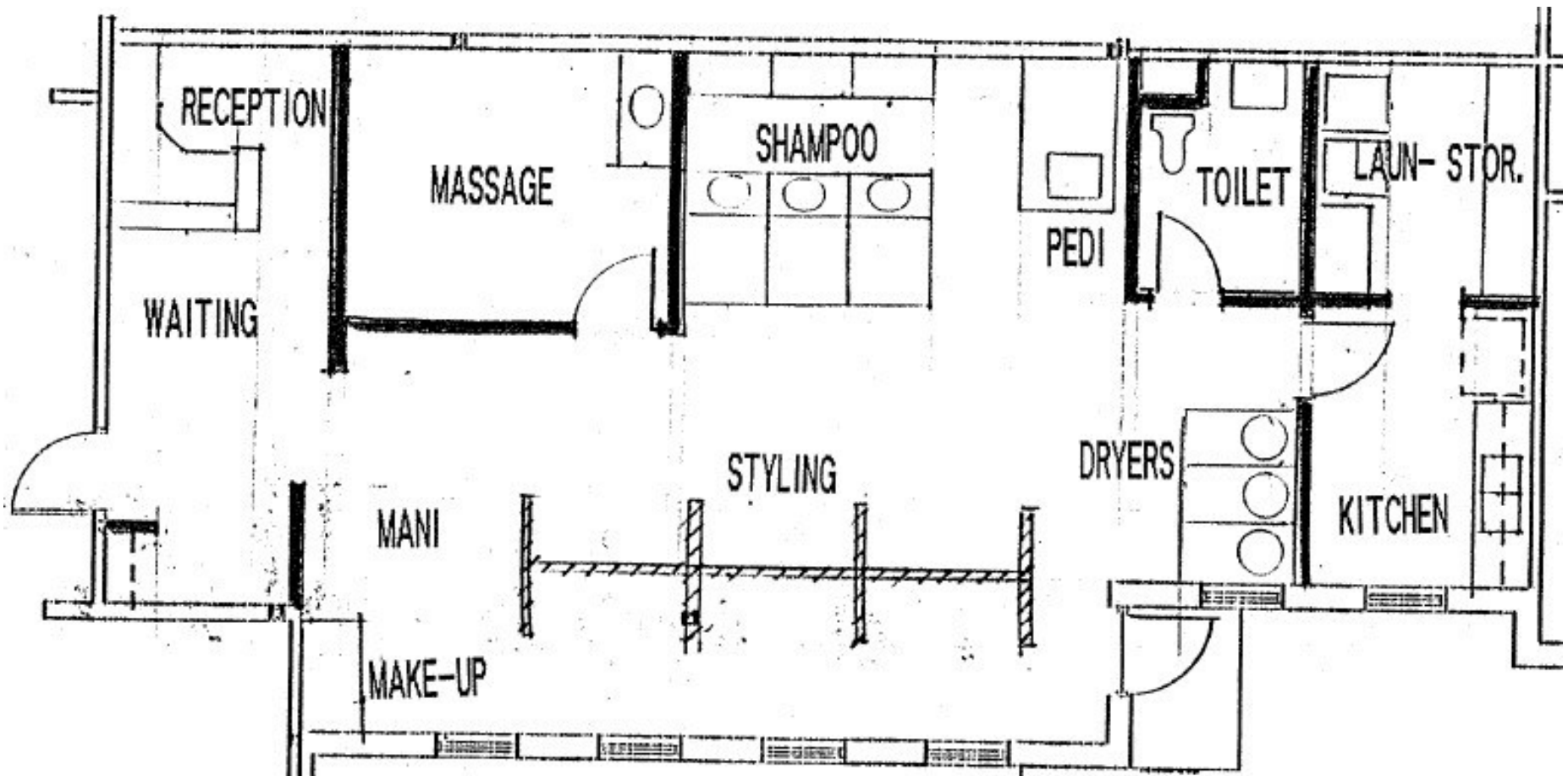


Colleen Geiger, Sales Agent
262-695-8800
cgeiger@judsonrealestate.com

Will Schlosser, Sales Agent
262-695-8800
wschlosser@judsonrealestate.com

Judson & Associates, S.C.
2831 N. Grandview Blvd, Suite 222
Pewaukee, WI 53072

Suite 110 - Current Salon Layout +/- 1,333 SF



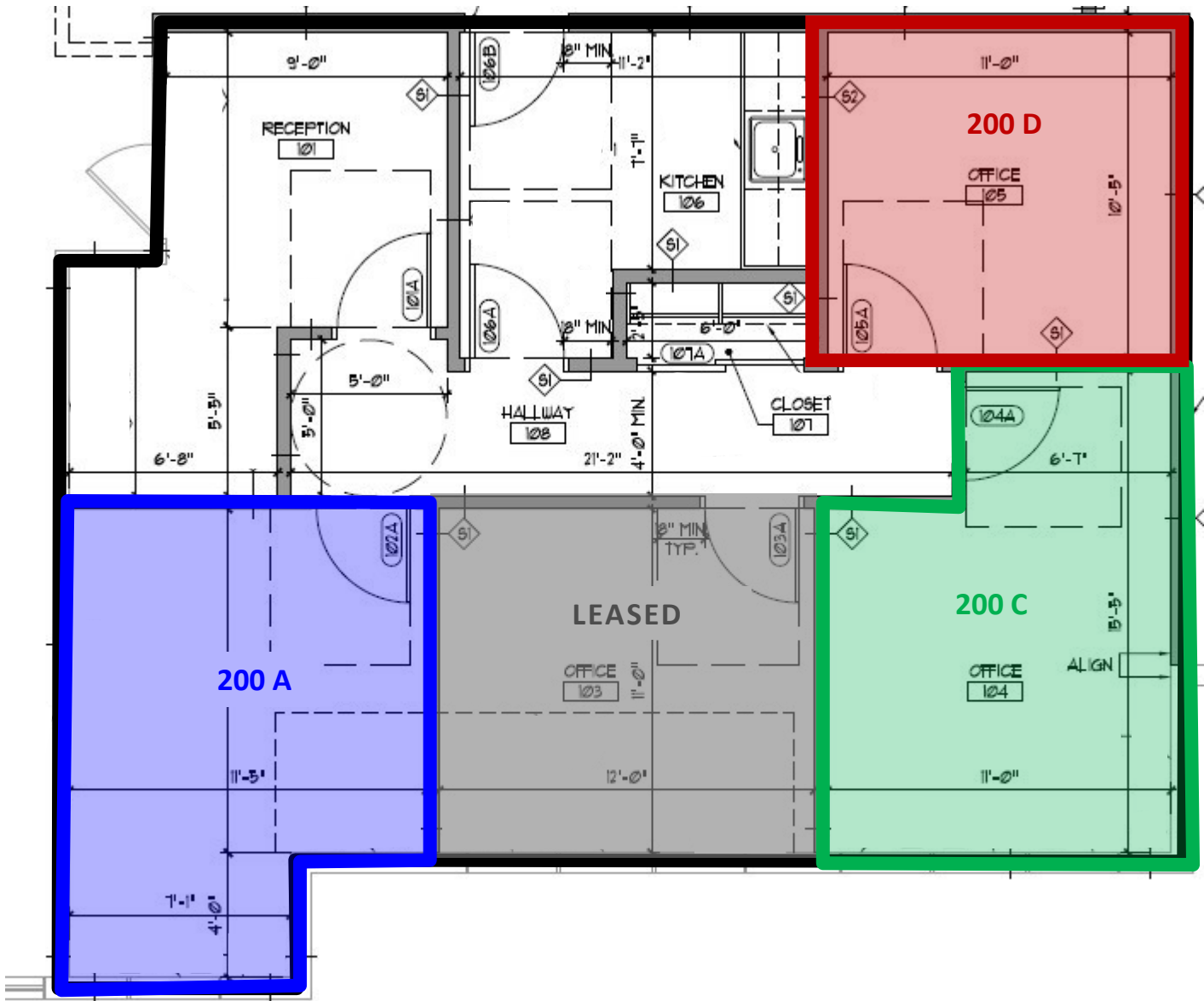
Office Suites for Lease

200 A = 143 SF

200 C = 163 SF

200 D = 110 SF

*Common Areas: Reception, Kitchen and Hallway Closet



1 Prior to negotiating on your behalf the Broker must provide you the following disclosure statement:

2 **BROKER DISCLOSURE TO CUSTOMERS**

3 You are a customer of the broker. The broker is either an agent of another party in the transaction or a subagent of another broker
4 who is the agent of another party in the transaction. The broker, or salesperson acting on behalf of the broker, may provide
5 brokerage services to you. Whenever the broker is providing brokerage services to you, the broker owes you, the customer, the
6 following duties:

7 ■ The duty to provide brokerage services to you fairly and honestly.

8 ■ The duty to exercise reasonable skill and care in providing brokerage services to you.

9 ■ The duty to provide you with accurate information about market conditions within a reasonable time if you request it, unless
10 disclosure of the information is prohibited by law.

11 ■ The duty to disclose to you in writing certain material adverse facts about a property, unless disclosure of the information is
12 prohibited by law (See Lines 47-55).

13 ■ The duty to protect your confidentiality. Unless the law requires it, the broker will not disclose your confidential information or the
14 confidential information of other parties (See Lines 22-39).

15 ■ The duty to safeguard trust funds and other property the broker holds.

16 ■ The duty, when negotiating, to present contract proposals in an objective and unbiased manner and disclose the advantages and
17 disadvantages of the proposals.

18 Please review this information carefully. A broker or salesperson can answer your questions about brokerage services, but if you
19 need legal advice, tax advice, or a professional home inspection, contact an attorney, tax advisor, or home inspector.

20 This disclosure is required by section 452.135 of the Wisconsin statutes and is for information only. It is a plain-language summary of
21 a broker's duties to a customer under section 452.133 (1) of the Wisconsin statutes.

22 **CONFIDENTIALITY NOTICE TO CUSTOMERS**

23 **BROKER WILL KEEP CONFIDENTIAL ANY INFORMATION GIVEN TO BROKER IN CONFIDENCE, OR ANY INFORMATION
24 OBTAINED BY BROKER THAT HE OR SHE KNOWS A REASONABLE PERSON WOULD WANT TO BE KEPT CONFIDENTIAL,
25 UNLESS THE INFORMATION MUST BE DISCLOSED BY LAW OR YOU AUTHORIZE THE BROKER TO DISCLOSE PARTICULAR
26 INFORMATION. A BROKER SHALL CONTINUE TO KEEP THE INFORMATION CONFIDENTIAL AFTER BROKER IS NO LONGER
27 PROVIDING BROKERAGE SERVICES TO YOU.**

28 **THE FOLLOWING INFORMATION IS REQUIRED TO BE DISCLOSED BY LAW:**

29 1. **MATERIAL ADVERSE FACTS, AS DEFINED IN SECTION 452.01 (5g) OF THE WISCONSIN STATUTES (SEE LINES 47-55),**

30 2. **ANY FACTS KNOWN BY THE BROKER THAT CONTRADICT ANY INFORMATION INCLUDED IN A WRITTEN INSPECTION
31 REPORT ON THE PROPERTY OR REAL ESTATE THAT IS THE SUBJECT OF THE TRANSACTION.**

32 **TO ENSURE THAT THE BROKER IS AWARE OF WHAT SPECIFIC INFORMATION YOU CONSIDER CONFIDENTIAL, YOU MAY LIST
33 THAT INFORMATION BELOW (SEE LINES 35-36). AT A LATER TIME, YOU MAY ALSO PROVIDE THE BROKER WITH OTHER
34 INFORMATION YOU CONSIDER TO BE CONFIDENTIAL.**

35 **CONFIDENTIAL INFORMATION:**

36 _____

37 **NONCONFIDENTIAL INFORMATION** (The following information may be disclosed by Broker):

38 _____

39 (INSERT INFORMATION YOU AUTHORIZE THE BROKER TO DISCLOSE SUCH AS FINANCIAL QUALIFICATION INFORMATION.)

40 **CONSENT TO TELEPHONE SOLICITATION**

41 I/We agree that the Broker and any affiliated settlement service providers (for example, a mortgage company or title company) may
42 call our/my home or cell phone numbers regarding issues, goods and services related to the real estate transaction until I/We
43 withdraw this consent in writing. List Home/Cell Numbers:

44 **SEX OFFENDER REGISTRY**

45 Notice: You may obtain information about the sex offender registry and persons registered with the registry by contacting the
46 Wisconsin Department of Corrections on the Internet at: <http://offender.doc.state.wi.us/public/> or by phone at 877-234-0085.

47 **DEFINITION OF MATERIAL ADVERSE FACTS**

48 a "material adverse fact" is defined in Wis. Stat. § 452.01 (5g) as an adverse fact that a party indicates is of such significance, or that
49 is generally recognized by a competent licensee as being of such significance to a reasonable party, that it affects or would affect
50 the party's decision to enter into a contract or agreement concerning a transaction or affects or would affect the party's decision
51 about the terms of such a contract or agreement. An "adverse fact" is defined in Wis. Stat. § 452.01 (1e) as a condition or occurrence
52 that a competent licensee generally recognizes will significantly and adversely affect the value of the property, significantly reduce
53 the structural integrity of improvements to real estate, or present a significant health risk to occupants of the property, or information
54 that indicates that a party to a transaction is not able to or does not intend to meet his or her obligations under a contract or
55 agreement made concerning the transaction.

No representation is made as to the legal validity of any provision or the adequacy
of any provision in any specific transaction.

Copyright 2006 by Wisconsin REALTORS[®] Association
Drafted by Attorney Richard J. Staff

Judson & Associates SC
2831 N Grandview Blvd, Suite 222, Pewaukee WI 53072
Phone: (262) 695-8800
Fax: (262) 695-8801

NAIOP

COMMERCIAL REAL ESTATE
DEVELOPMENT ASSOCIATION

WISCONSIN CHAPTER