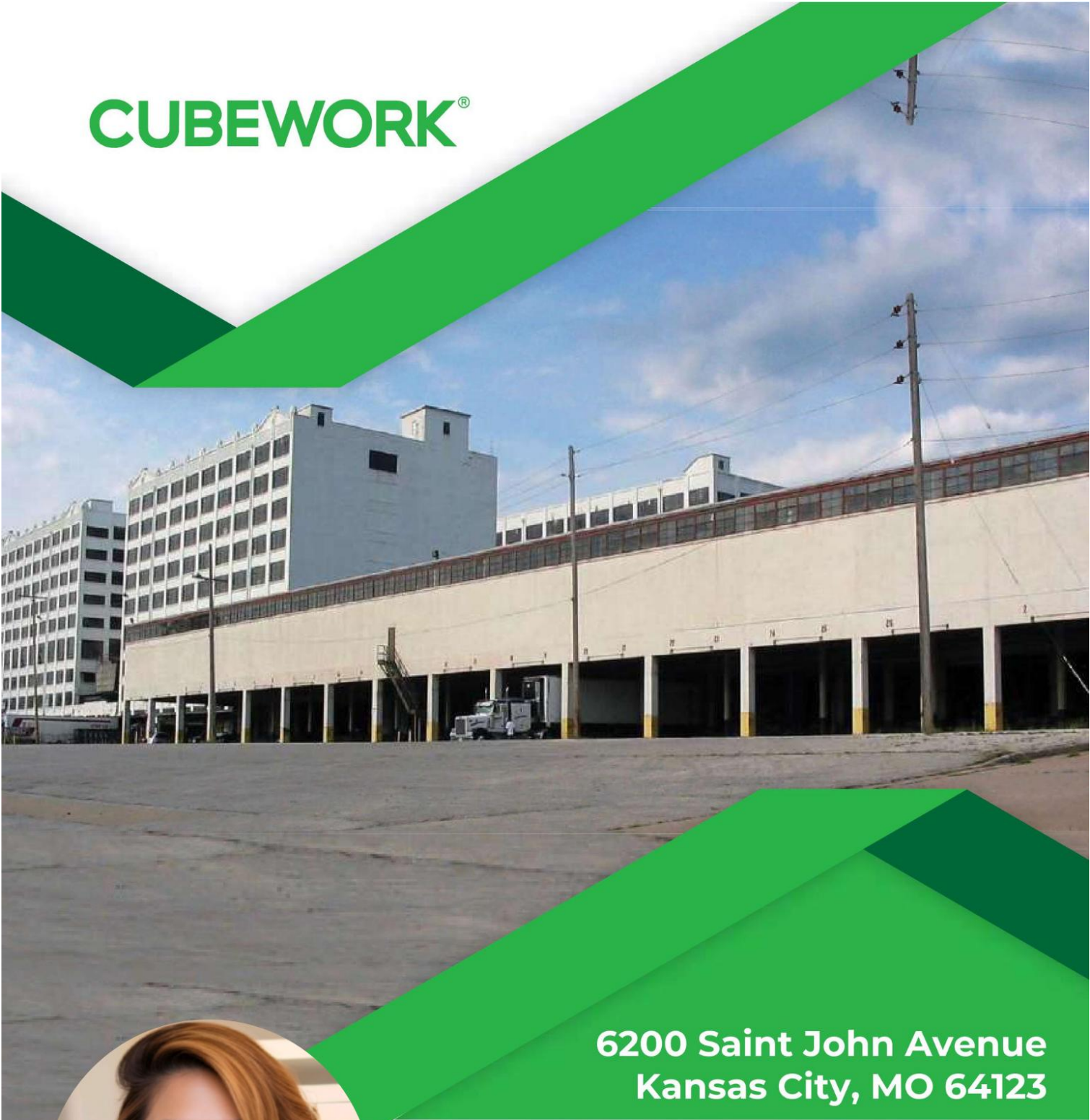


# CUBEWORK®



**6200 Saint John Avenue  
Kansas City, MO 64123**



**Rita Strickland**



**Business Development Manager**

**816-803-1088**



**[rita.strickland@cubework.com](mailto:rita.strickland@cubework.com)**



**[www.cubework.com](http://www.cubework.com)**

# CUBE EATS

BY  
CUBEWORK

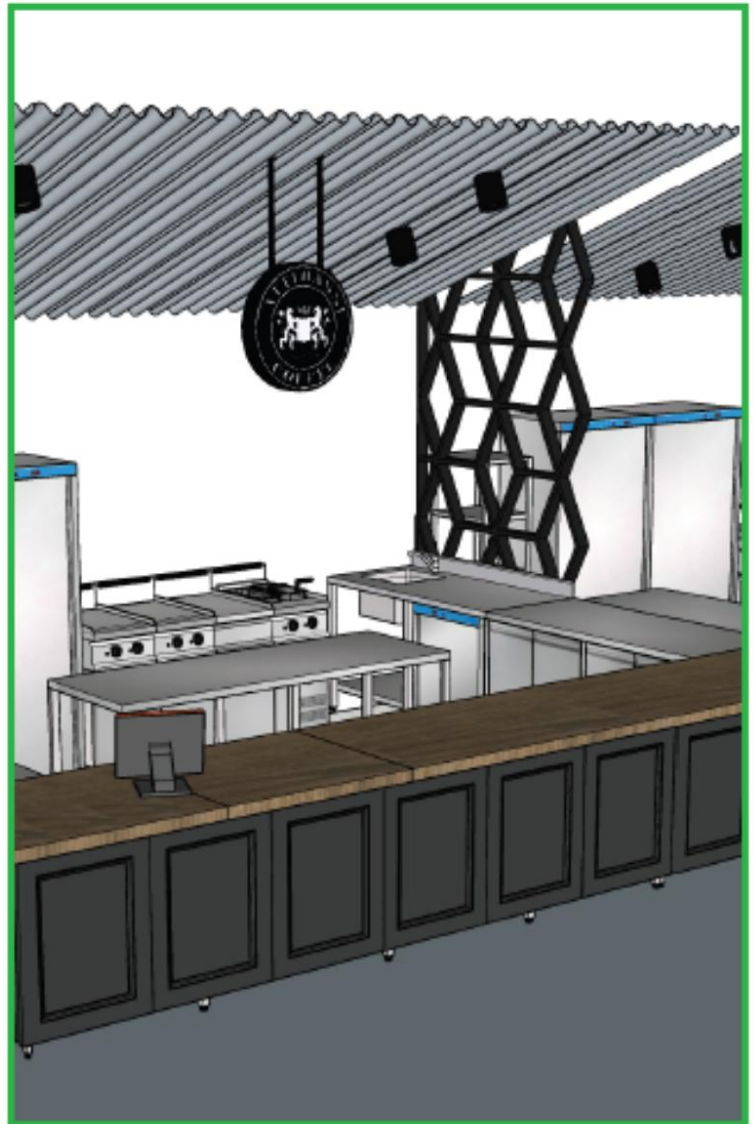
## FOOD AND BEVERAGE HALL

Located in the historic Montgomery Ward building at 6200 St. John Ave., Cube Eats by Cubework is the 15-vendor, 5,000 square foot newly designed food hall featuring local restaurants such as St. John Burgers and other local cuisines.

With top of the line kitchen equipment and ample storage space, you can trust that our kitchen has everything you need to run a successful food business. Our fully furnished facilities are available to rent at affordable rates, so you can focus on growing your business without worrying about breaking the bank.

## WHAT'S INCLUDED?

- Fully furnished spaces
- Fully equipped kitchen equipment
- 24/7 building access
- High speed internet
- Onsite staff
- CCTV/surveillance
- Security
- No hidden fees
- Outdoor patio seating
- Access to super flea & kids play



ADDRESS  
6200 St. John Ave  
Kansas City, MO 64123  
[www.cubework.com](http://www.cubework.com)

Rita Strickland  
Business Development Manager  
816-803-1088  
[rita.strickland@cubework.com](mailto:rita.strickland@cubework.com)





## Newly Renovated Superflea

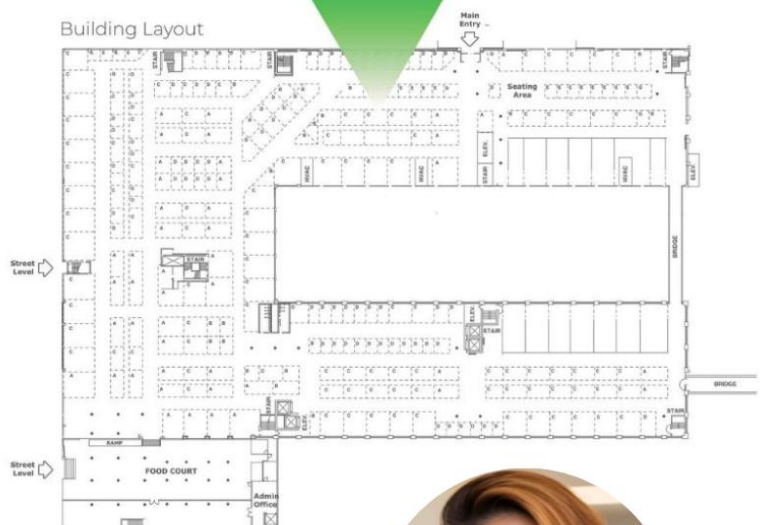
Looking for a prime location to sell your goods and reach a large audience of customers?

When you sign up to become a vendor at the SUPERFLEA, you'll receive a newly designed vendor booth that you can customize to showcase your unique products.

### Includes

- Fully furnished booths
- Free Wi-Fi
- 200-10,000 sq. ft. available
- Signage & Ads
- Access to Cube Eats
- Access to Cube Play

Building Layout

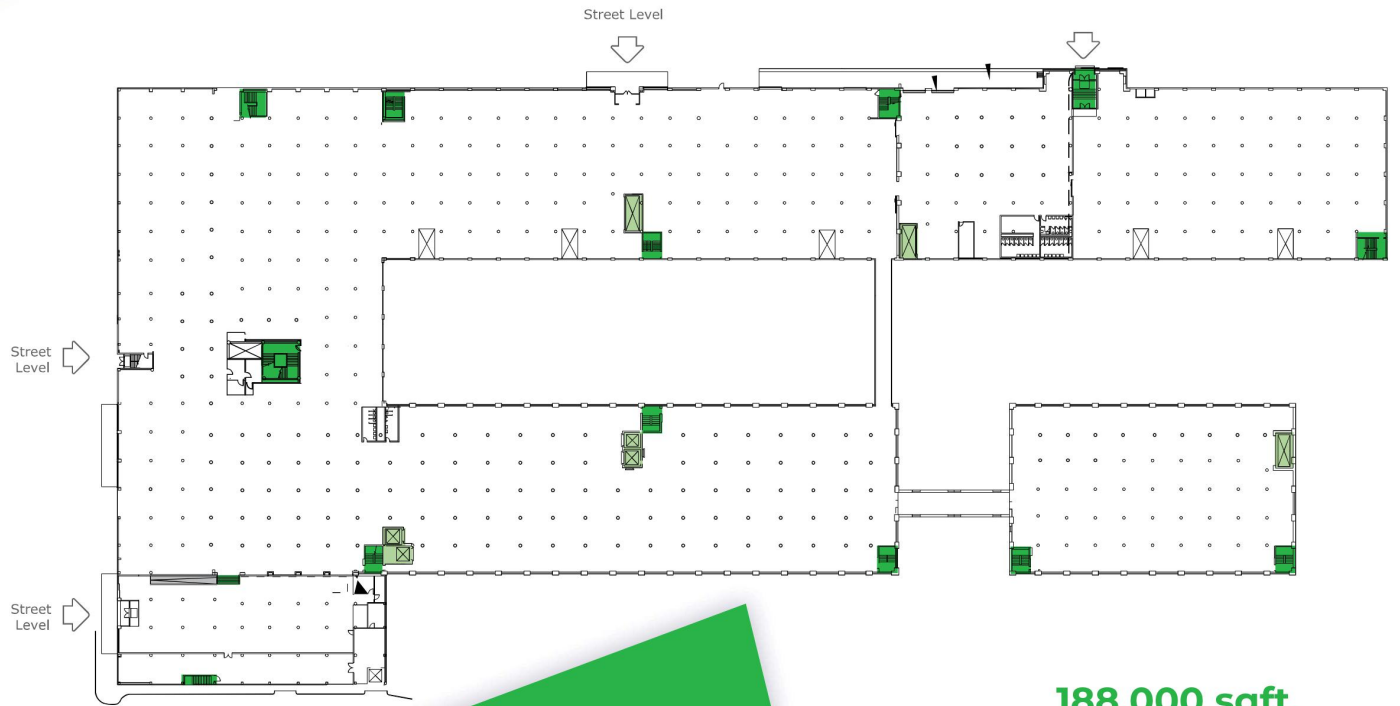


**Rita Strickland**  
**Business Development Manager**  
**816-803-1088**  
**rita.strickland@cubework.com**

6200 St. John Ave  
 Kansas City, MO 64123  
[www.cubework.com/superflea](http://www.cubework.com/superflea)



# 2ND FLOOR

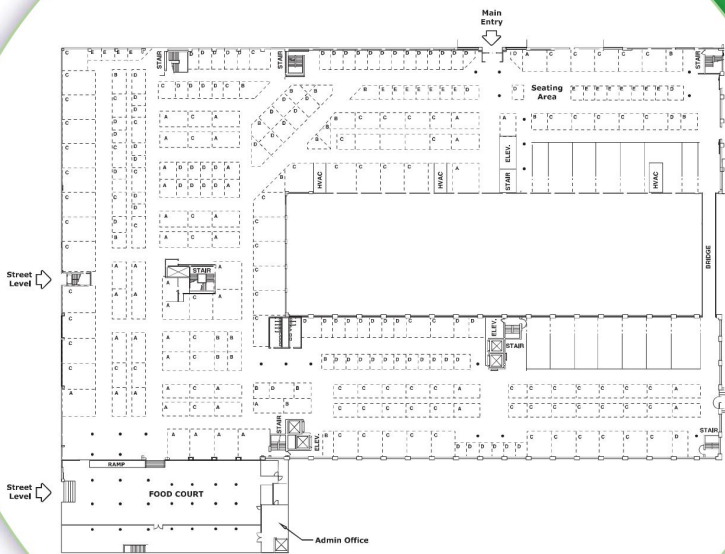


**188,000 sqft.**  
(BUILDING A, B, C)

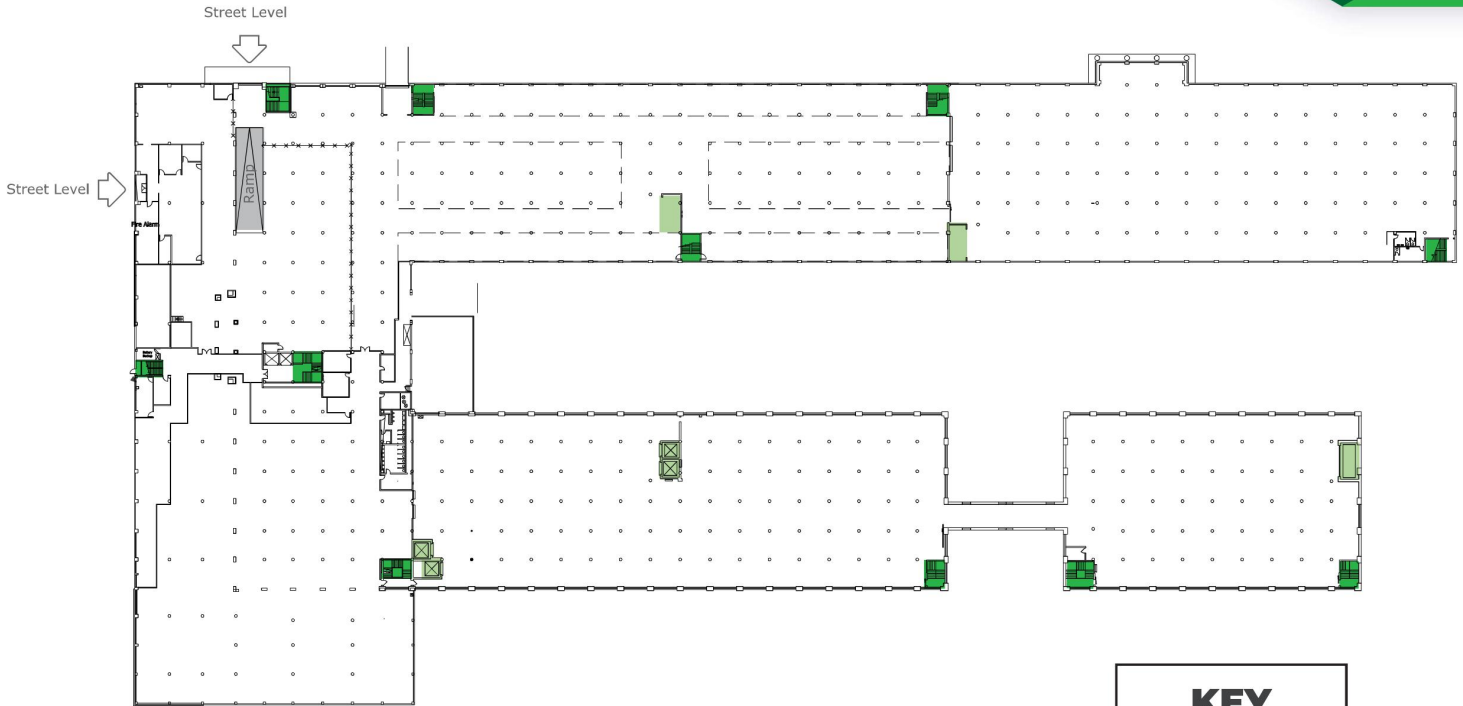
## KEY

- STAIRS
- ELEVATORS
- RAMPS

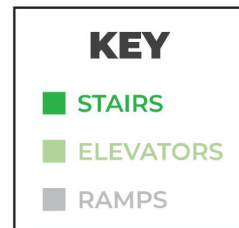
# SUPERFLEA



# 3RD FLOOR



**186,000 sqft.**  
(BUILDING A, B, C)



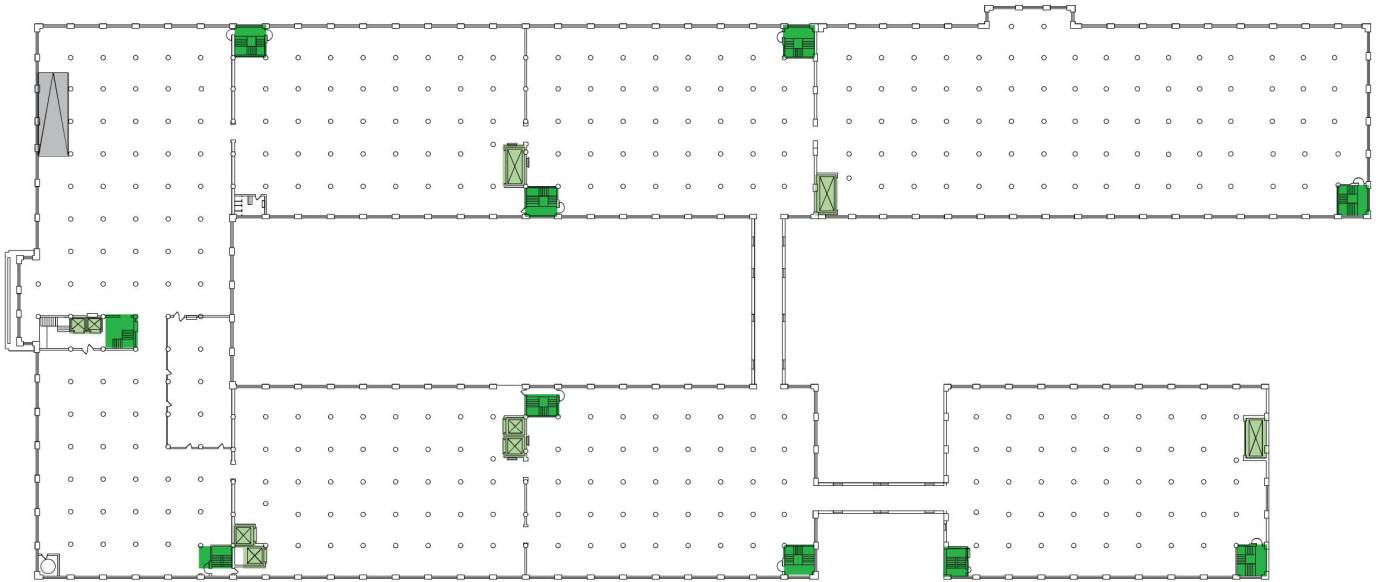
## AMENITIES

- 24/7 Building Access
- High-Speed Internet
- Unique Common Areas
- Conference Rooms
- Coffee & Fresh Water
- Creative Workspaces
- 24/7 Customer Service
- Community Managers
- Mail and Package Handling
- Loading Docks
- CCTV, Surveillance System
- Daily Cleaning and Maintenance
- Business Class Printers
- Social Events
- Global Network
- Gym & Lockers
- Fully Furnished Offices
- Security Guards

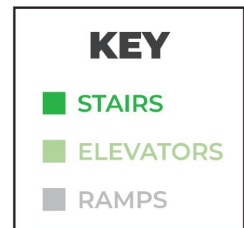
## SERVICES

- Front Desk Service
- Mail and Package Handling
- Daily Cleaning
- Office Supplies
- Business Class Printers
- Fresh Coffee & Tea
- Air Conditioning
- Surveillance & Night Security Guards
- Flexible On-demand Warehouse Terms
- Option to Merge

# 4TH FLOOR



**160,000 sqft.**  
(BUILDING A, B, C)



## AMENITIES

- 24/7 Building Access
- High-Speed Internet
- Unique Common Areas
- Conference Rooms
- Coffee & Fresh Water
- Creative Workspaces
- 24/7 Customer Service
- Community Managers
- Mail and Package Handling
- Loading Docks
- CCTV, Surveillance System
- Daily Cleaning and Maintenance
- Business Class Printers
- Social Events
- Global Network
- Gym & Lockers
- Fully Furnished Offices
- Security Guards

## SERVICES

- Front Desk Service
- Mail and Package Handling
- Office Supplies
- Business Class Printers
- Fresh Coffee & Tea
- Air Conditioning
- Surveillance & Night Security Guards
- Flexible On-demand Warehouse Terms
- Option to Merge