

## WAREHOUSE SPACE FOR LEASE

# 3236 Genesee Street

## Cheektowaga, New York, 14225



## 3,200 ± SF OF WAREHOUSE SPACE AVAILABLE

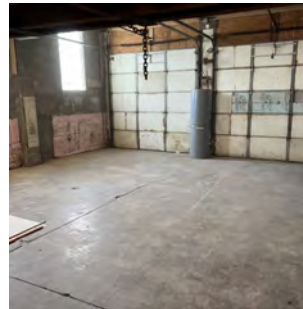
### Features

Building Size	3,200 ± Sq. Ft.
Lot Size	.56 Acres
Parking	On-site

### Property Highlights

- 3,200 ± sq. ft. Warehouse available for lease in Cheektowaga, NY
- Features include: 2 grade level doors, 710 ± sq. ft. of office space, heating / furnace, ample parking, and a showroom, tool room, and restroom
- Easy access to NYS Thruway I-90
- Just 5 minutes to the Buffalo Airport
- Many nearby amenities including restaurants, retail stores, and gas stations
- Ideal for: warehouse storage and light manufacturing

Demographics	1 Mile	3 Miles	5 Miles
Population	12,765	109,187	299,691
Average H.H. Income	\$60,935	\$65,469	\$69,788



Warehouse Space For Lease

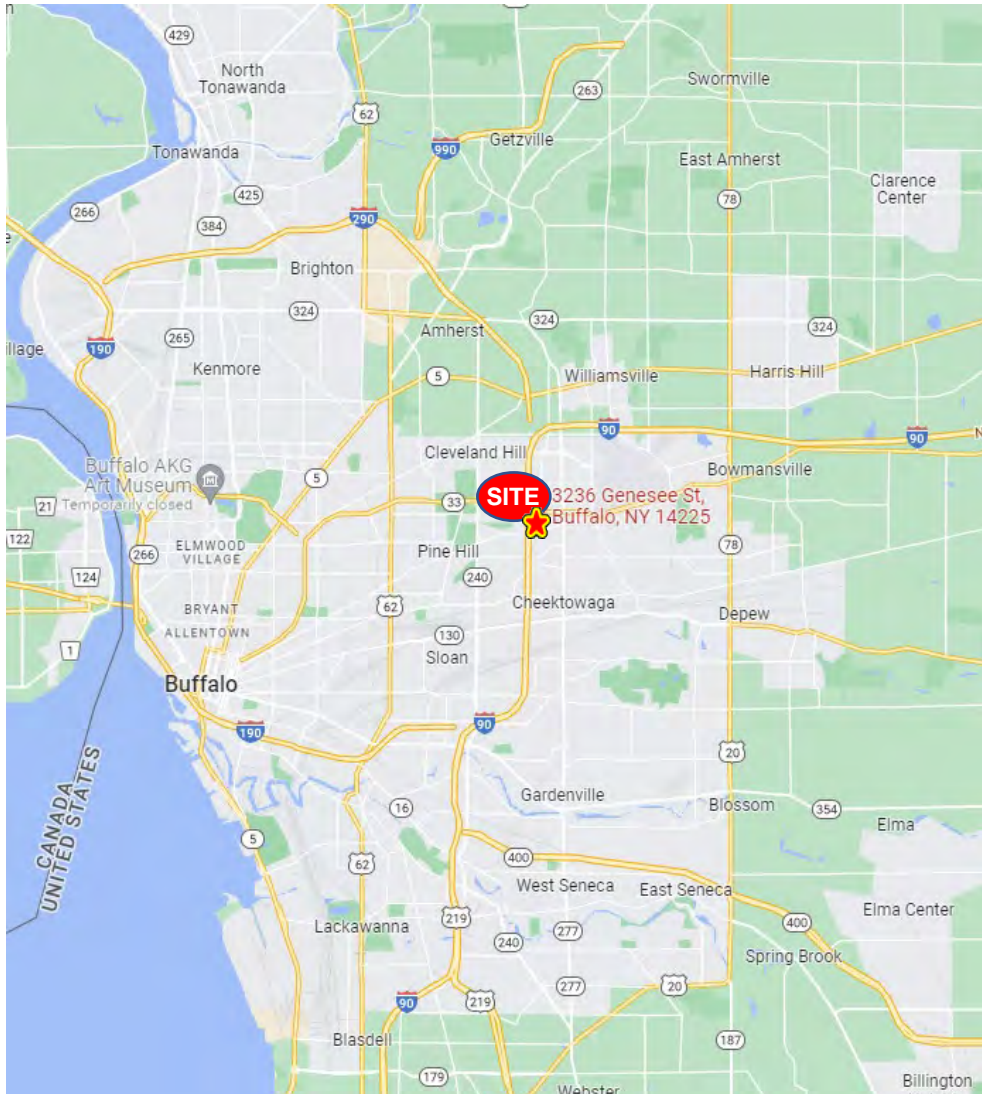
### Contact

**NICK KIEFFER**  
Real Estate Salesperson  
+1 716 860 6732  
nkieffer@pyramidbrokerage.com

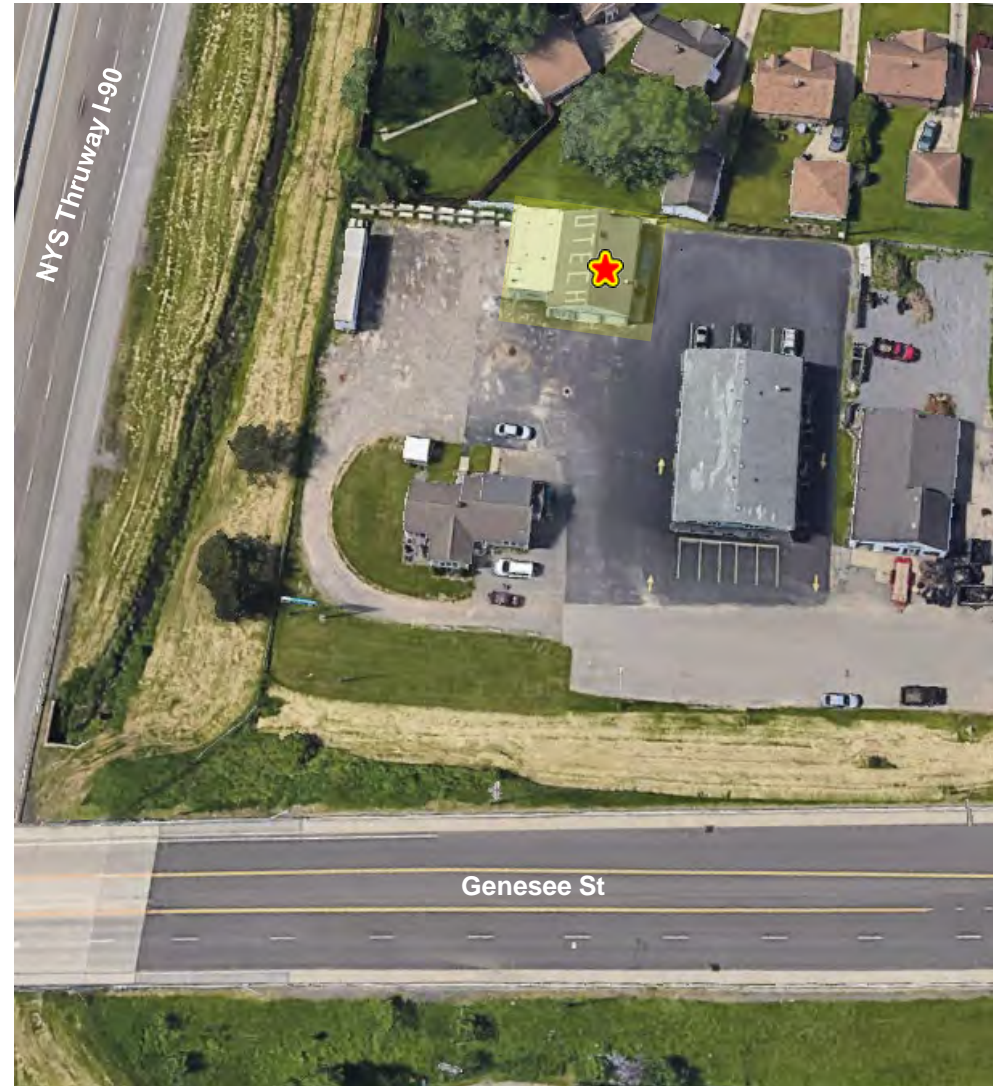
14 Lafayette Square, Suite 1900  
Buffalo, New York 14203  
+1 716 852 7500  
pyramidbrokerage.com

**FOR LEASE**

**3236 Genesee Street | Cheektowaga, NY**



Location Map



Aerial