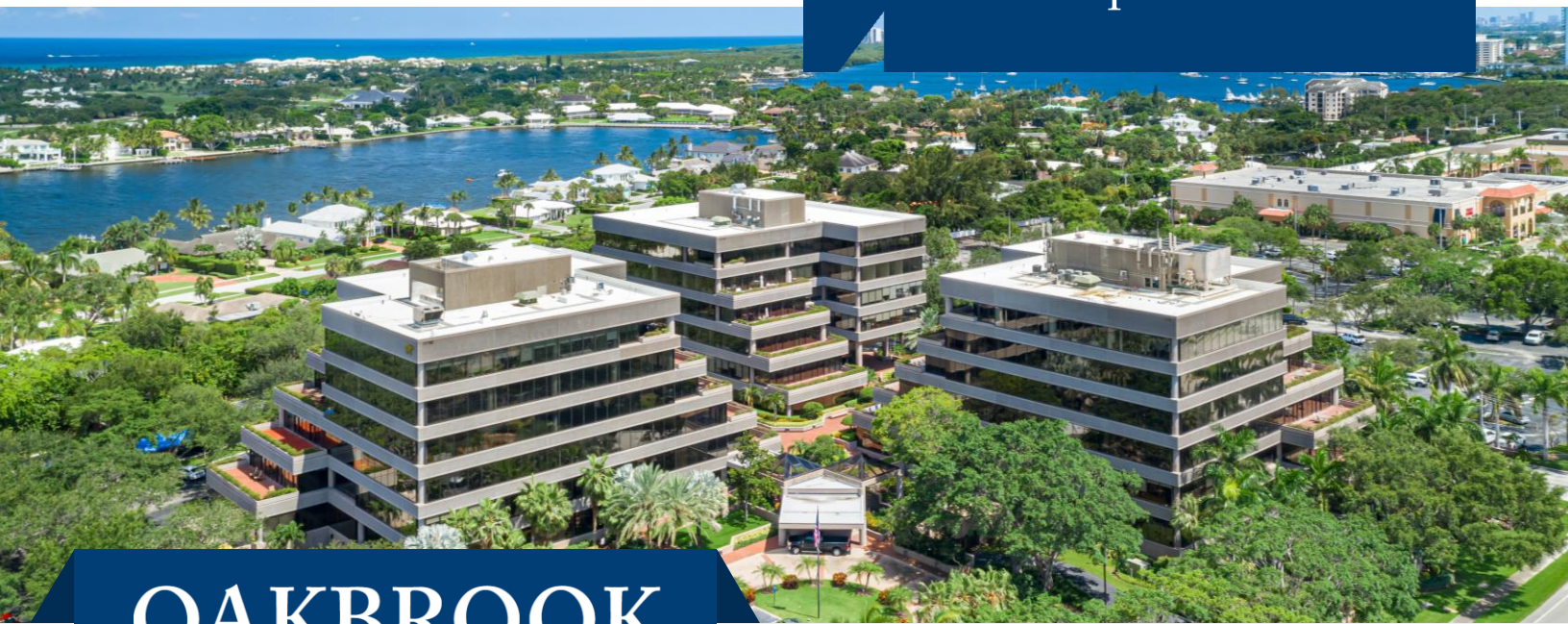


For Sublease
±2,817 SF
Office Space



OAKBROOK CENTER

11760 US Highway One, Suite W502, Palm Beach Gardens, FL

Property Features

- Move-in ready sublease
- Class-A office complex with amazing water views of the Intracoastal, ocean, and surrounding luxury communities
- One-of-a-kind architecture, lush landscaping, floor-to-ceiling windows, on-site fitness center, and upgraded lobbies
- Great location at US Highway One and PGA Boulevard, near I-95 and the best of Palm Beach Garden's retail, dining and professional conveniences

Key Features:



Beautifully built-out corner suite with immediate availability



Exclusive on-site fitness center, with 2 Peloton Bikes



Includes one garage space, with ample surface parking available



Sublease through August 2027

For more information

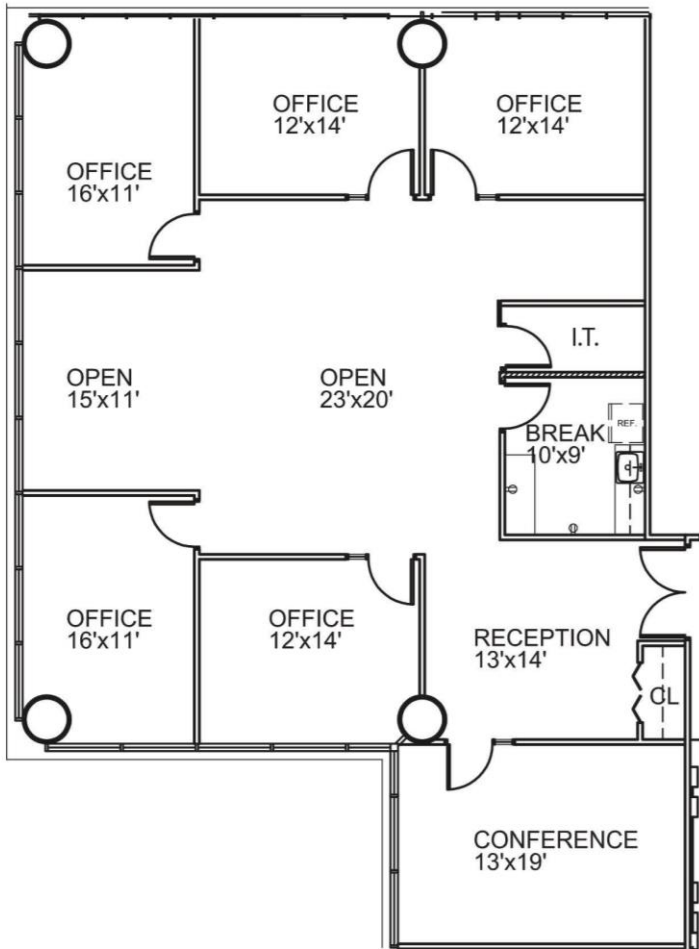
Jason L. Sundook, SIOR
Principal | jsundook@mhcreal.com

Lesley Sheinberg, Managing Director
561 254 7810 | lsheinberg@mhcreal.com



OAKBROOK CENTER, SUITE W502, PALM BEACH GARDENS

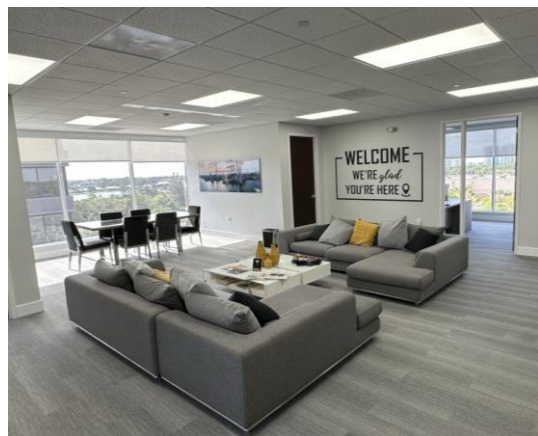
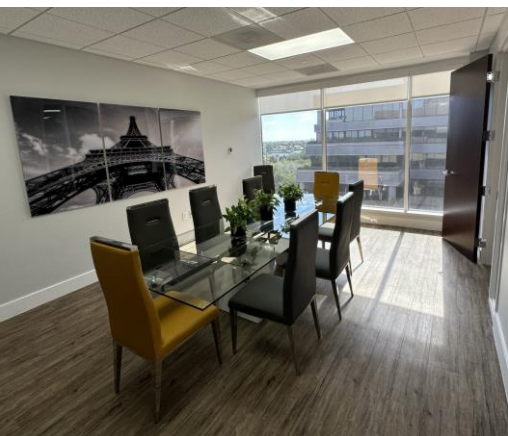
±2,817 SF Move-In Ready Corner Office Sublease



Suite Features


- Beautifully finished corner office suite
- Double-door entry
- Floor-to-ceiling windows
- Reception area
- Conference room
- 4 private offices
- Open work area
- Kitchen/breakroom
- Furniture can be made available

CALL TO LEARN MORE
561 471 8000



For More Information:

Jason L. Sundook, SIOR | jsundook@mhcreal.com
Lesley Sheinberg | lsheinberg@mhcreal.com

 561 471 8000

 www.OakbrookCenter.net
www.mhcreal.com