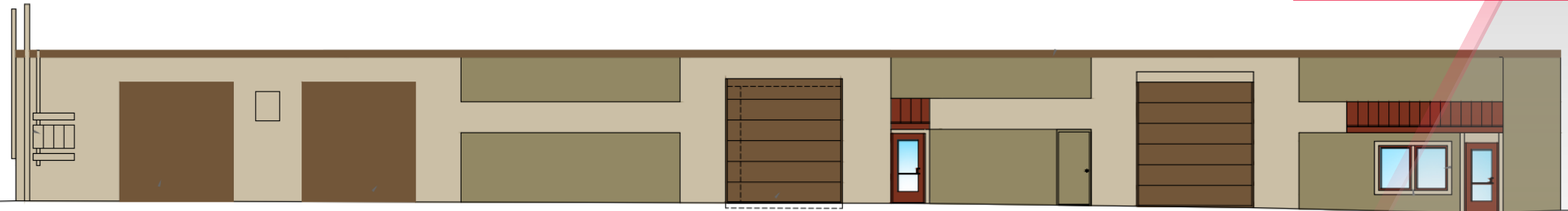


FOR LEASE

101 Meade Road
Syracuse, New York 13206



Industrial/Flex



MEAD ROAD ELEVATION

1/8" = 10"

11,306± SF Available For Lease

Property Highlights

- Secure location on the corner of Eastbourne Drive and Meade Road
- Space is 50' wide x 225'± deep
- Five-year minimum term
- Below market rate at \$5.00 PSF with modified gross lease
- New 1,200± SF high-bay, wide open, office space
- One (1) 12'x12' overhead door
- New LED lights and roofs
- New warehouse and office handicap accessible bathrooms
- Fully Sprinklered
- New HVAC in office
- GFA heat in warehouse
- 400 Amp, 3 phase power (separate power)
- Active alarm and fire protection systems
- Easy access off Court Street, close to I-90, I-690, and I-81

Contact

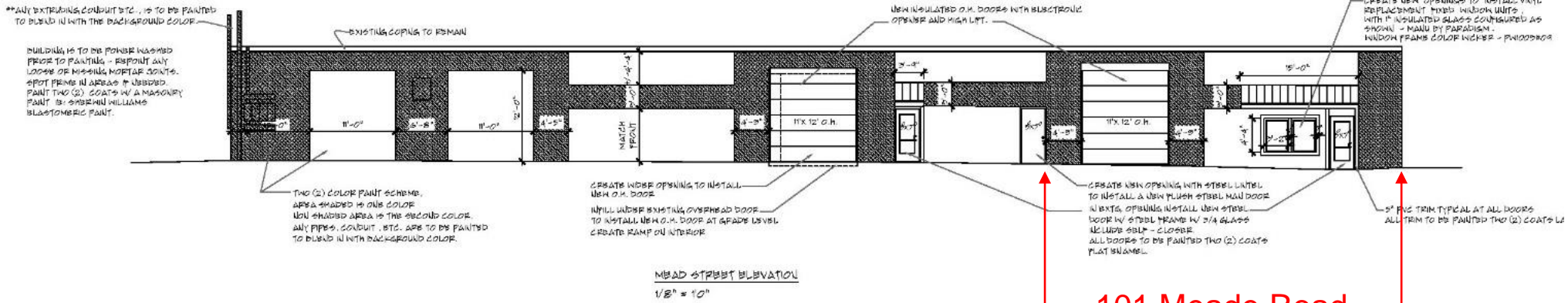
JAMES A. LAURENZO
Associate Real Estate Broker
+1 315 445 8518
jlaurenzo@pyramidbrokerage.com



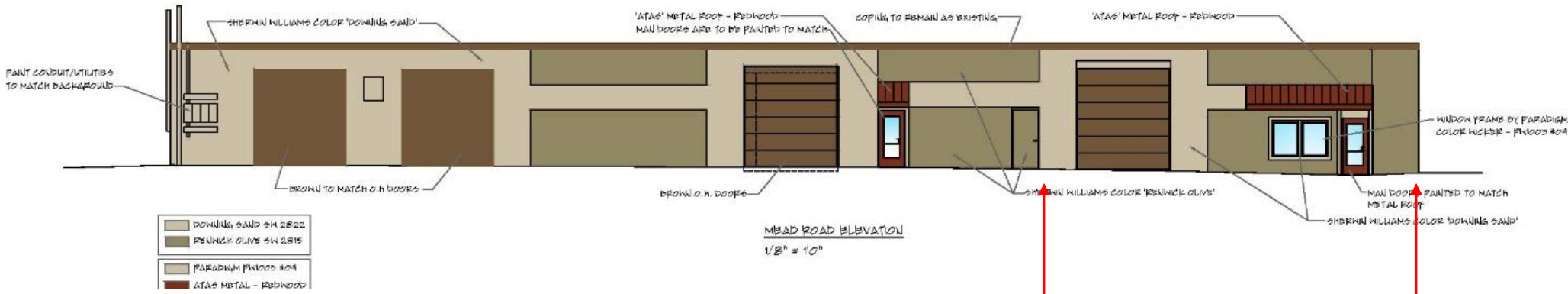
5845 Widewaters Pkwy, Suite 200
East Syracuse, New York 13057
+1 315 445 1030
pyramidbrokerage.com

FOR LEASE

101 Meade Road | Syracuse, New York



101 Meade Road



101 Meade Road

FOR LEASE

101 Meade Road | Syracuse, New York

