



Locally Owned. Globally Connected.

FOR SALE

5661 Ochletree Lane

Wilmington, DE 19808



MEDICAL/GENERAL OFFICE BUILDING FOR SALE

OFFERING SUMMARY

Sale Price:	\$1,600,000
Building Size:	7,800 SF
Lot Size:	3.59 AC
Zoning:	UDC - Planned Unit Development
Parcel:	0803000078

PROPERTY OVERVIEW

Medical office building for sale. Formerly occupied by a hospice center. Could be used for an adult daycare, assisted living center, medical or general office. Heavy power in the building - could be a surgery center or other large power user.

PROPERTY HIGHLIGHTS

- 12 private rooms/offices (each with full bath)
- Commercial kitchen with some equipment (hood installed)
- Diesel generator
- Fully sprinkled
- Security system
- 39 parking spaces (4 handicap)
- Well maintained - built in 2007

For more information, please contact:

Rich Dudek

Tel 302.656.6870
Cell 302.893.7937
dudek@pattersonwoods.com

Kyle McLaughlin

Tel 302.622.3517
Cell 215.622.0905
mclaughlin@pattersonwoods.com

3801 Kennett Pike
Bldg. D, Suite 100
Wilmington, DE 19807

Tel 302.622.3500
www.pattersonwoods.com



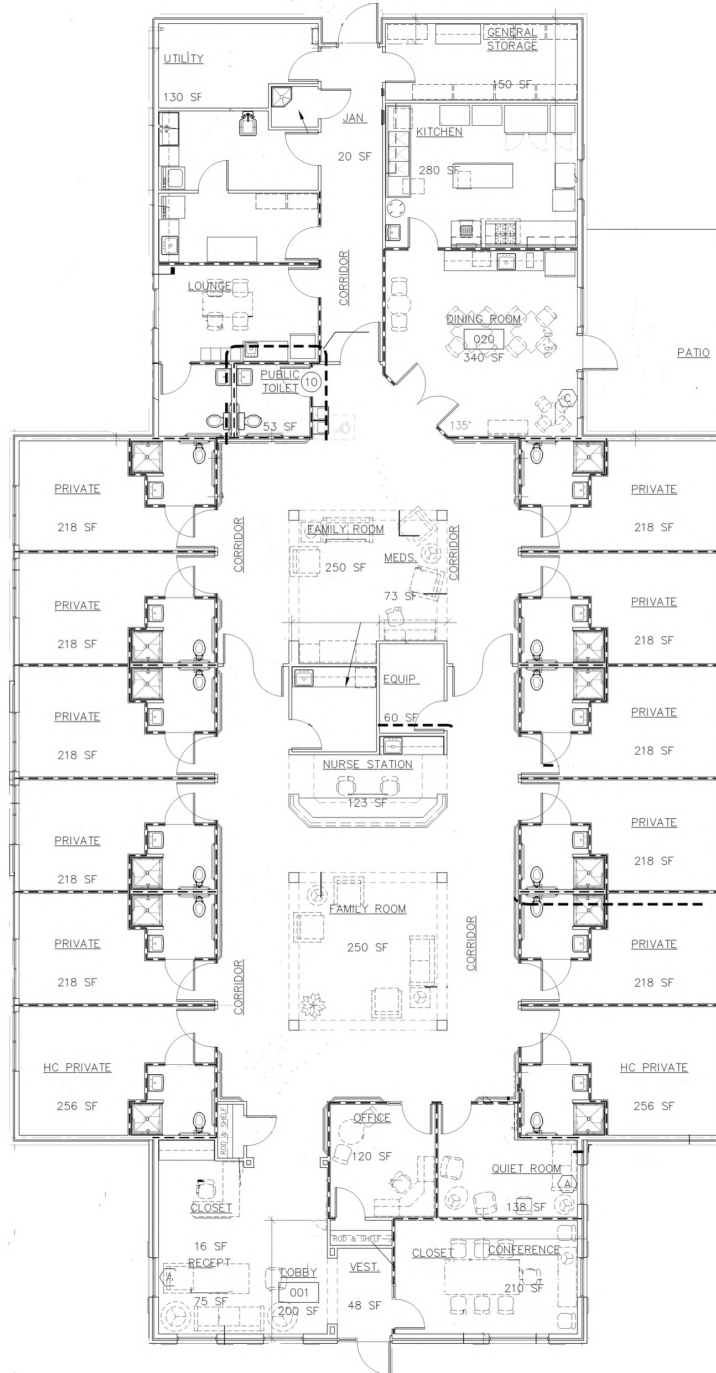


Locally Owned. Globally Connected.

FOR SALE

5661 Ochletree Lane

Wilmington, DE 19808



3801 Kennett Pike
Bldg. D, Suite 100
Wilmington, DE 19807

Tel 302.622.3500
www.pattersonwoods.com



The information in this document was obtained from sources we deem reliable; however, no warranty or representation, expressed or implied, is made as to the accuracy of the information contained herein.



Locally Owned. Globally Connected.

FOR SALE

5661 Ochletree Lane

Wilmington, DE 19808



3801 Kennett Pike
Bldg. D, Suite 100
Wilmington, DE 19807

Tel 302.622.3500
www.pattersonwoods.com

The information in this document was obtained from sources we deem reliable; however, no warranty or representation, expressed or implied, is made as to the accuracy of the information contained herein.

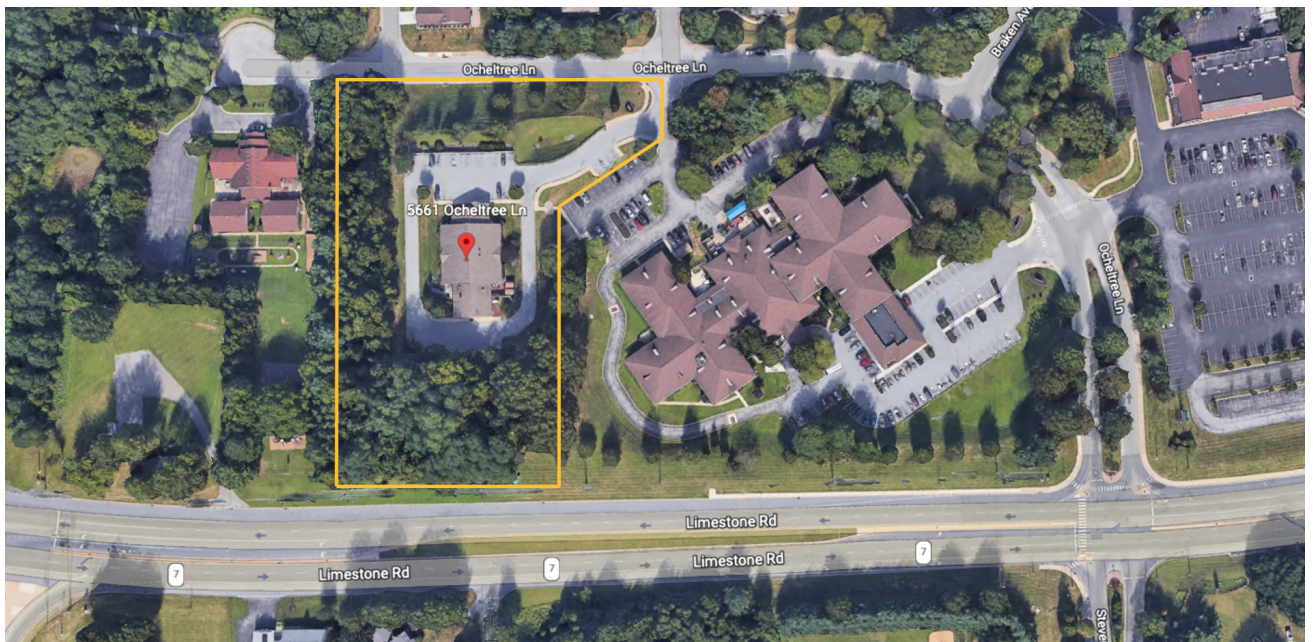


FOR SALE

5661 Ochletree Lane

Wilmington, DE 19808

Locally Owned. Globally Connected.



3801 Kennett Pike
Bldg. D, Suite 100
Wilmington, DE 19807

Tel 302.622.3500
www.pattersonwoods.com



The information in this document was obtained from sources we deem reliable; however, no warranty or representation, expressed or implied, is made as to the accuracy of the information contained herein.