



PRIVATE OFFICE SUITES AVAILABLE FOR LEASE

6787 SOUTH REDWOOD ROAD, WEST JORDAN, UT 84084



PROPERTY INFORMATION

- Suite 6: 108 SF Executive Office
- Lease Rate: \$400.00/Month Full Service
- Shared Reception Area and Breakroom
- Secured 24/7 Access
- Internet Included
- ADA Accessible
- High Traffic Area on Redwood Road
- Easy Access to I-15 and I-215

DEMOGRAPHICS

	1 Mile	3 Mile	5 Mile
Population	12,315	109,941	327,837
Households	4,512	38,705	110,984
Avg. Household Income	\$70,256	\$74,919	\$81,772

TRAFFIC COUNTS

Redwood Road: 45,000 Annual Average Daily Traffic
 7000 South: 27,000 Annual Average Daily Traffic

801-617-1706

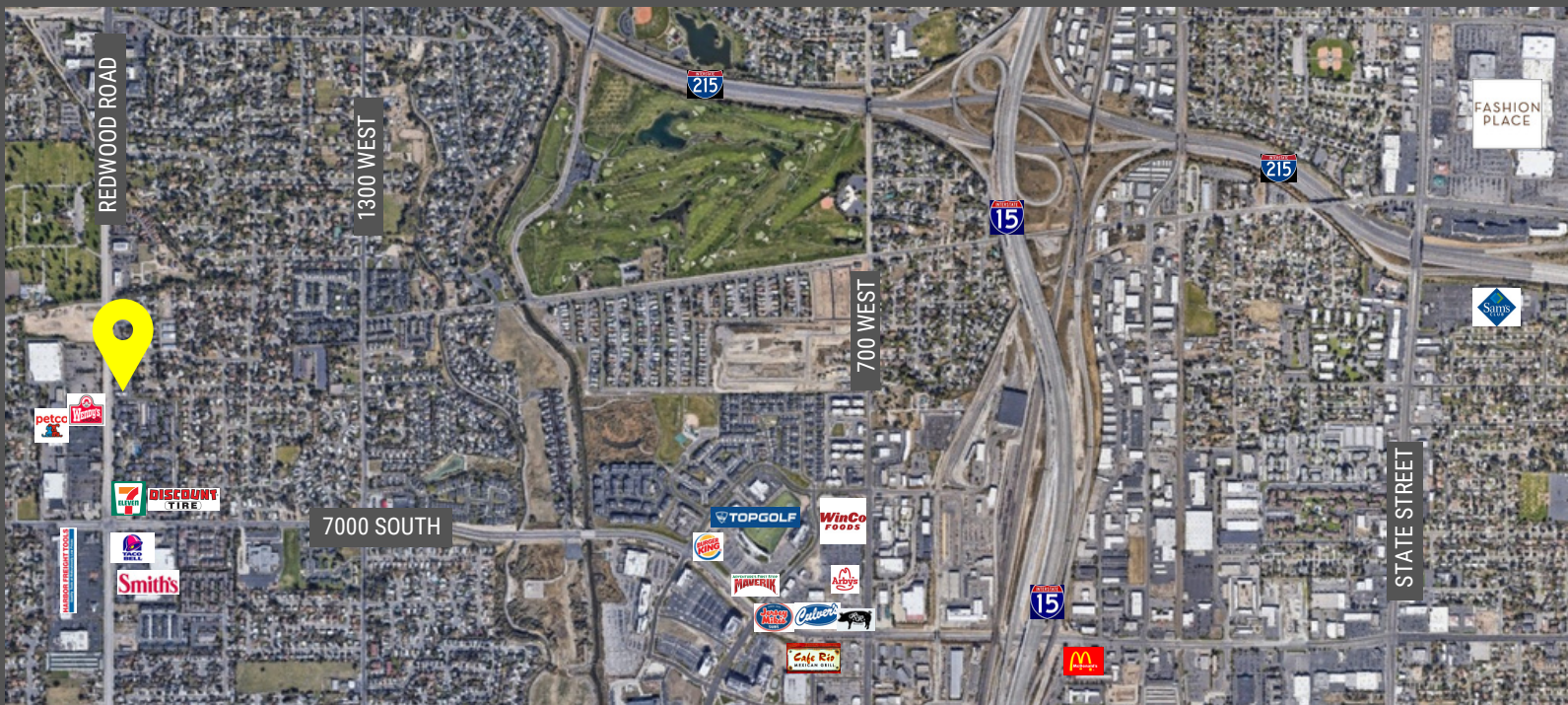
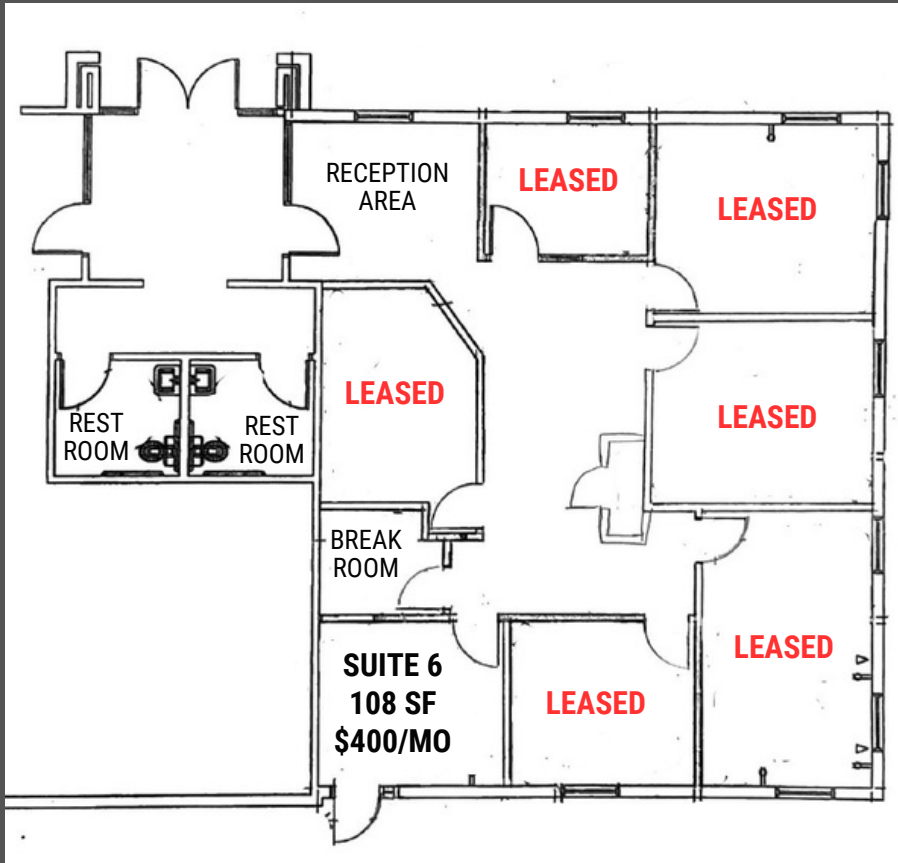
| KELLEN KONCAR

| kellen.koncar@crcnationwide.com



PRIVATE OFFICE SUITES AVAILABLE FOR LEASE

6787 SOUTH REDWOOD ROAD, WEST JORDAN, UT 84084



This information is given with the understanding that all negotiations and/or real estate activity related to the property described above shall be conducted through this cRc Nationwide office. The above information while not guaranteed, was obtained from sources we believe to be reliable.

801-617-1706

KELLEN KONCAR

kellen.koncar@crcnationwide.com