

4919 WOODALL
FOR SALE OR LEASE



Welcome to Woodall!

WOODALL

FOR SALE OR LEASE

Strategically located at the gateway between the East Brookhollow and Dallas Design District/North Trinity submarkets, **4919 WOODALL** is a stand-alone, 50,508 square foot light industrial project of choice for logistics, showroom, distribution, manufacturing, and ecommerce players. As one of the best infill locations in the DFW industrial market, Woodall is located three miles from the Design District, four miles from Dallas Love Field, and five miles from Downtown Dallas, making it an ideal last mile location that can easily access the city's most affluent and densely populated areas.

The stand-alone building's heavy power, parking and storage optionality, and central location will allow it to attract a discerning 50,500 SF user or buyer. Welcome to Woodall!



M2G VENTURES

4919 WOODALL

PROJECT ATTRIBUTES

Stand-alone 50,508 SF building

3/1000 Parking

Centrally Located Near Love Field

14' - 24' Clear Height; 24' Clear in Main Loading Area

Sprinklered

Ability to have HVAC

Heavy Power - 2,000 AMPS, 120 Volt, Three-phase power

Front Loading with 5 Dock High Doors

Opportunity for Industrial Outside Storage and/or additional parking

PROJECT IMPROVEMENTS

Major Capital Improvements

Enhanced Landscaping

Fresh Interior and Exterior Paint

New Roof and Skylights

Exterior and Interior LED Lighting

6,000 SF Enhanced Office Space



M2G VENTURES



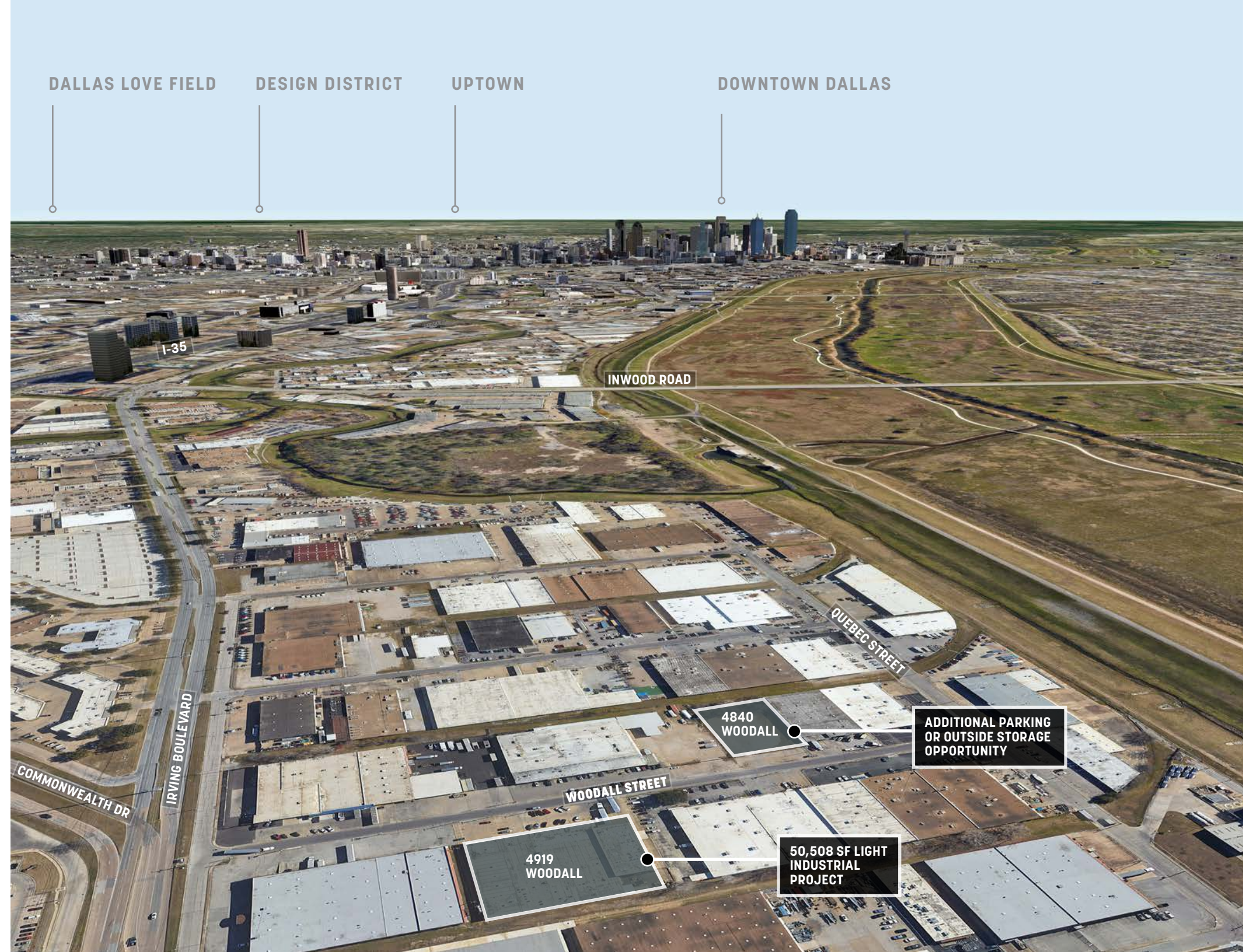
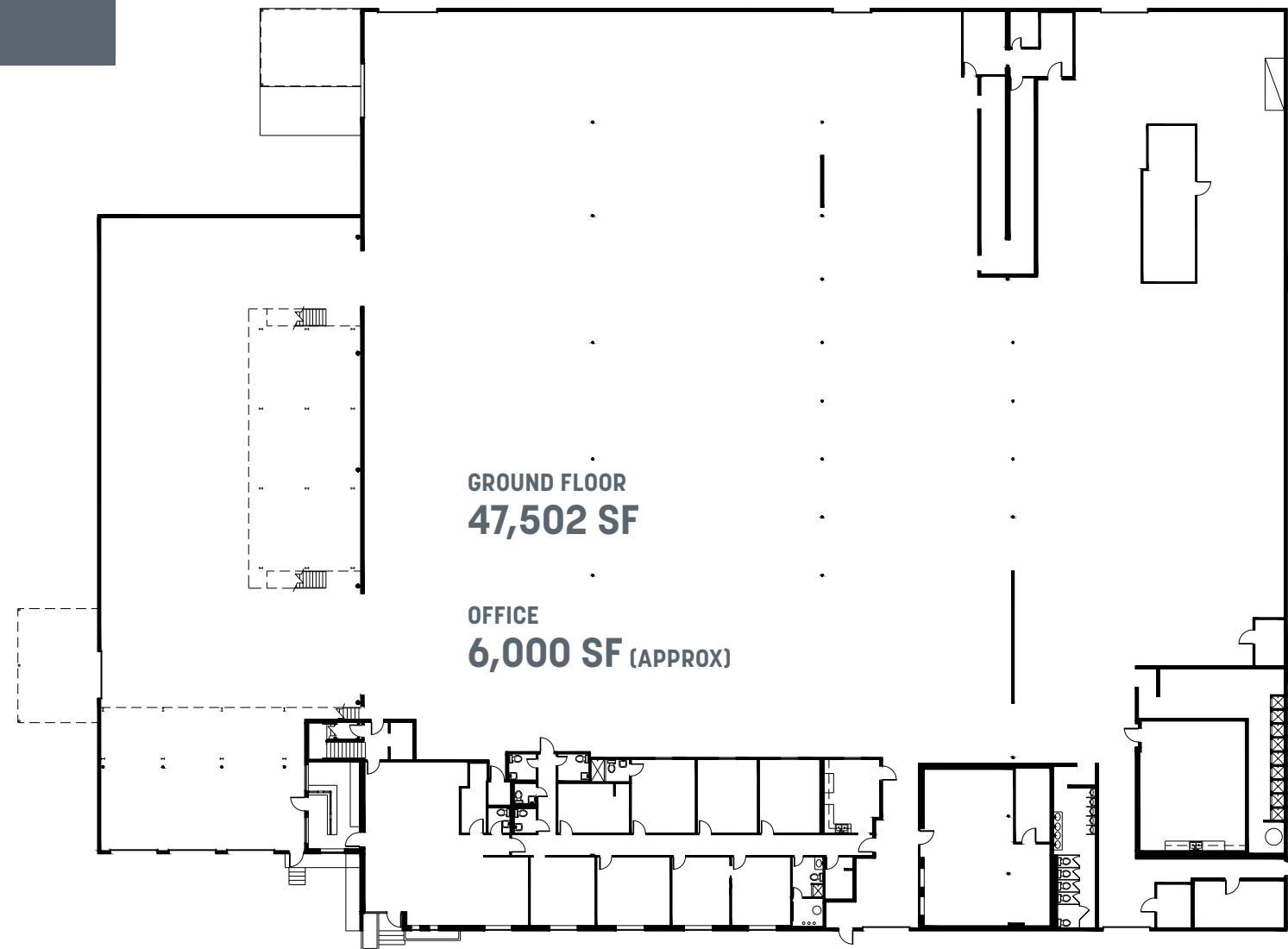
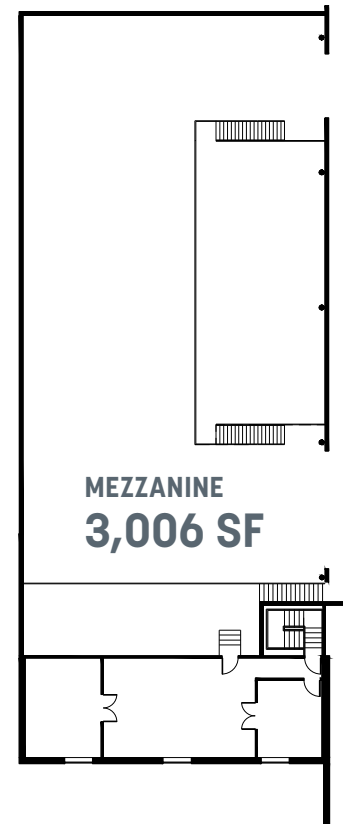
WOODALL

SHOWROOM

4919 WOODALL

50,508 SF TOTAL

**STAND-ALONE BUILDING
FOR LEASE OR SALE**



PRIME LOCATION

4919 WOODALL STREET
DALLAS, TEXAS 75247

DISTRICTS	
01	MEDICAL DISTRICT
02	UPTOWN
03	DESIGN DISTRICT
04	DALLAS CBD



- 0.3 MILES 1-35
- 5 MILES Dallas CBD
- 31 MILES Fort Worth CBD
- 4 MILES Dallas Love Field Airport

- 3 MILES Design District
- 3 MILES Medical District
- 15 MILES Dallas/Fort Worth International Airport

4919 WOODALL

NAI Robert Lynn

CHASE MILLER

214 256 7131

cmiller@nairl.com

EVERETT JAMES

214 256 7170

ejames@nairl.com



**Pennybacker
Capital**

M2G VENTURES

THE INFORMATION CONTAINED HEREIN HAS BEEN GIVEN TO US BY THE OWNER OF THE PROPERTY OR OTHER SOURCES WE DEEM RELIABLE. WE HAVE NO REASON TO DOUBT ITS ACCURACY, BUT WE DO NOT GUARANTEE IT. ALL INFORMATION SHOULD BE VERIFIED PRIOR TO PURCHASE OR LEASE.