

6500 Greenville Avenue



James Davis
Executive Vice President
214 256 7103
jdavis@nairl.com

Justin Utay, SIOR
Executive Vice President
214 256 7166
jutay@nairl.com

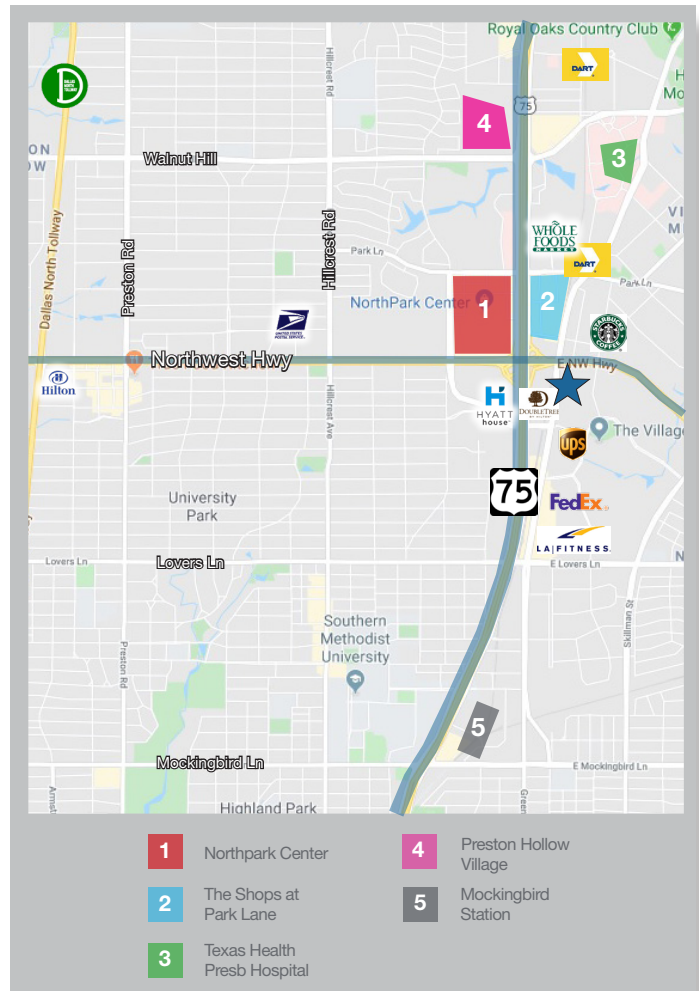
Grant Frerichs
Leasing Associate
214 256 7146
gfrerichs@nairl.com





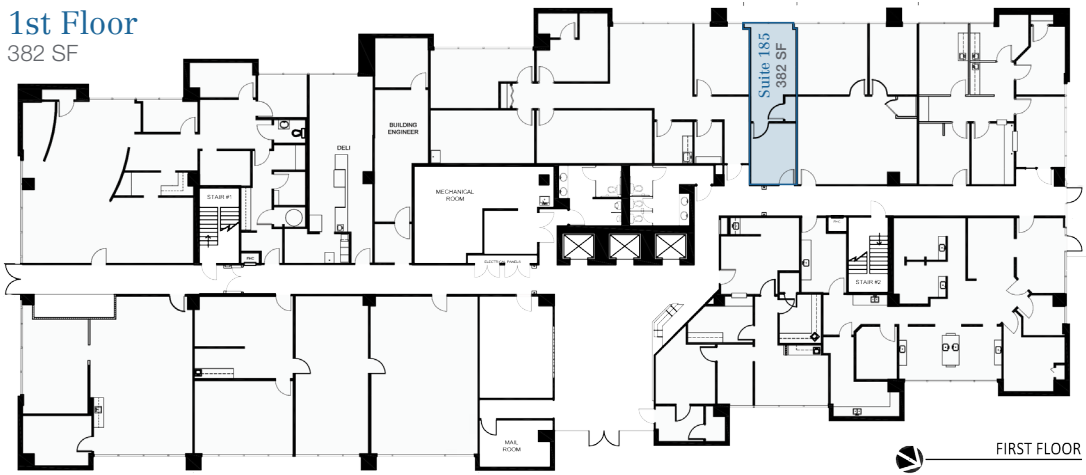
Why 6500 Greenville Avenue?

- Easy Access to Major Traffic Arteries and Central Expressway
- Situated Near Hotels, Shopping and Restaurants
- 24-Hour Key-Card Access
- On-Site Security Guards
- Less Than a Mile to DART Rail Station
- Bus Stop Located on Property
- Move-In Ready Suites
- Interior & Exterior Renovations Coming Soon!
- Parking Ratio: 3.36/1,000 SF
- Covered and Surface Parking
- On-Site Deli and Sundry Shop
- Attentive & Responsive Local Ownership



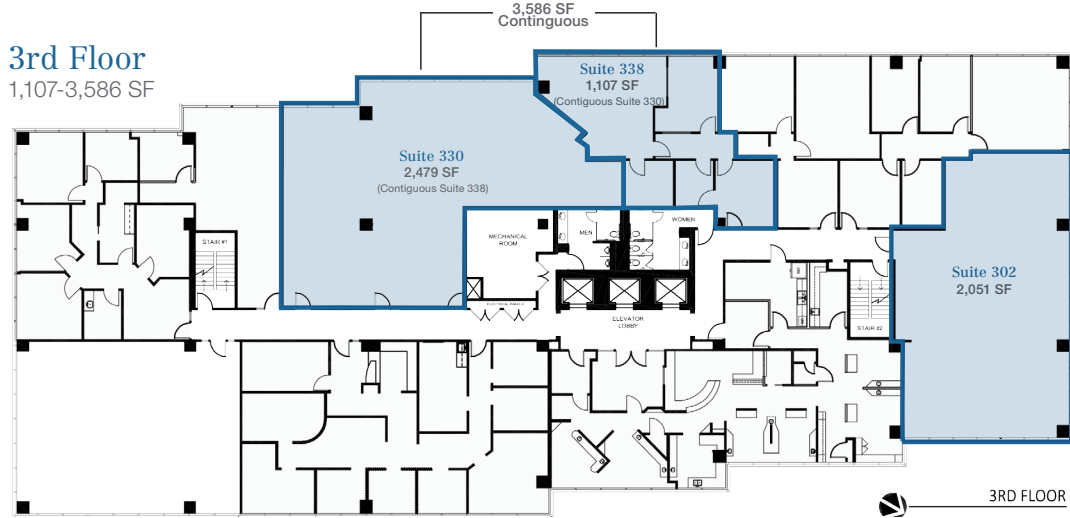
1st Floor

382 SF



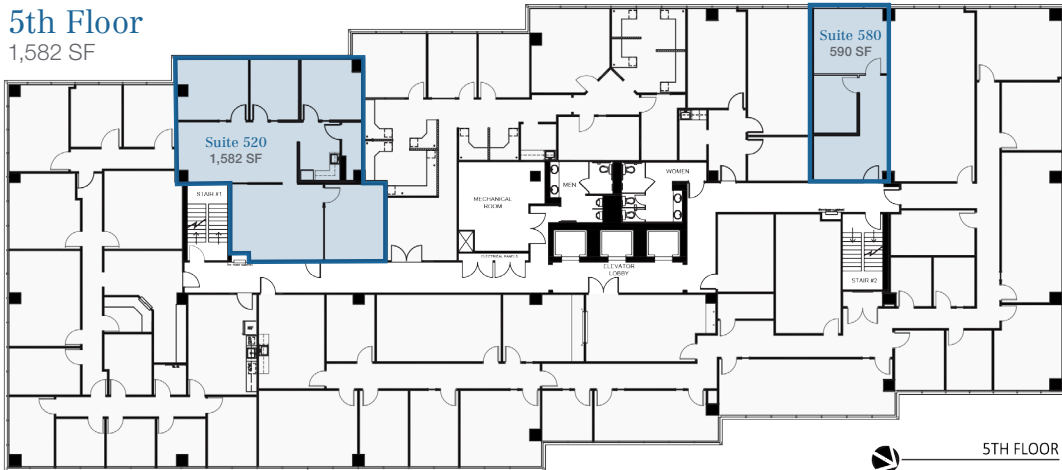
3rd Floor

1,107-3,586 SF



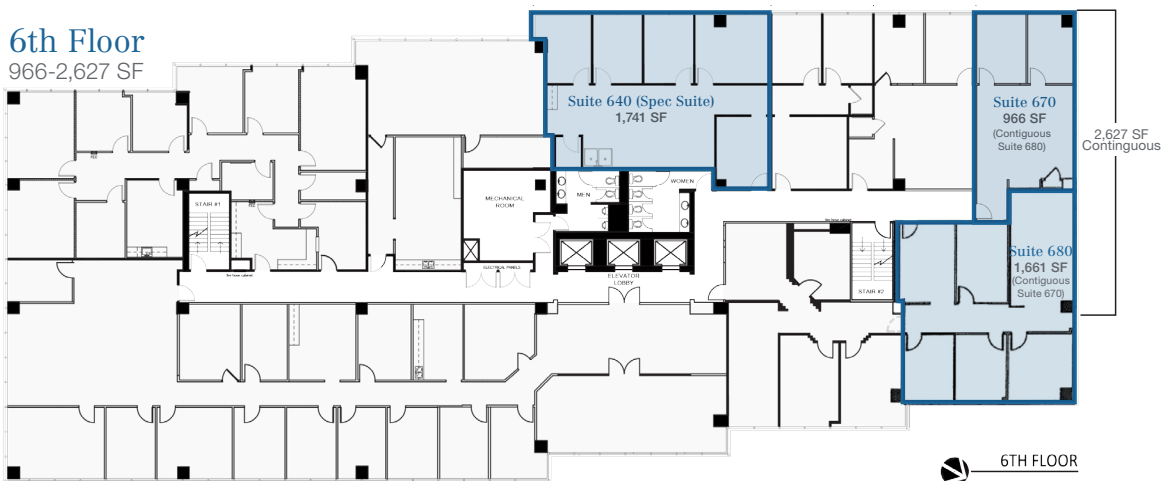
5th Floor

1,582 SF



6th Floor

966-2,627 SF



6500 Greenville Avenue

Dallas, Texas 75206



6
3 SUITES
966-2,627 SF

5
2 SUITES
590-1,582 SF

3
3 SUITES
1,107-3,586 SF

1
1 SUITE
382 SF

Available Suites



THE INFORMATION CONTAINED HEREIN HAS BEEN GIVEN TO US BY THE OWNER OF THE PROPERTY OR OTHER SOURCES WE DEEM RELIABLE. WE HAVE NO REASON TO DOUBT ITS ACCURACY, BUT WE DO NOT GUARANTEE IT. ALL INFORMATION SHOULD BE VERIFIED PRIOR TO PURCHASE OR LEASE.