

3810 McCULLOM LAKE ROAD McHENRY, IL 60050

FOR SALE

MLS # 11201540

September 27, 2022



LAND • 5.42 ACRES

\$1,200,000 (\$5.08 psf)

DESCRIPTION

DEVELOPMENT LAND 5.42 ACRES

Development opportunity located adjacent to Meijer and 2 residential subdivisions. 5.42 acres ideal location for multi-family housing, assisted living or medical/professional office complex. Currently a Farmette zoned AG in McHenry County. (not annexed into the city of McHenry).

SPECIFICATIONS

Description	Development Land
Land Size	5.42 Acres 236,095 SF
Topography	Level
Environmental Status	TBD AG Land
Utilities	To Site
Sewer/Water	Well - currently Septic - currently
Frontage Dimensions	780' McCullom Lake Rd. 687' Blake Blvd.
Zoning	A1 - McHenry County
Real Estate Taxes	\$4,788.64 (2021)
PIN Numbers	09-23-300-027 09-26-100-025

DEMOGRAPHICS

	1 Mile	3 Miles	5 Miles
Population	5,674	33,955	63,735
Avg Household Income	\$73,567	\$80,220	\$99,357

Daily Traffic Counts: 4,600 on McCullom Lake Road
23,700 at Intersection of McCullom Lake Road and Route 31

No warranty or representation is made as to the accuracy of the foregoing information. Terms of sale or lease and availability are subject to change or withdrawal without notice. This document is for information purposes only. No offer of sub-agency is being made.

PREMIER
COMMERCIAL REALTY

- Industrial
- Commercial
- Office
- Land
- Business

CLICK HERE
to view our website

9225 S. IL Route 31
Lake in the Hills, IL 60156
www.PremierCommercialRealty.com
Office: 847-854-2300 | Fax: 847-854-2380

HEATHER SCHWEITZER

Vice President/Managing Broker

Office: 847-854-2300 Ext 15

Cell: 815-236-9816

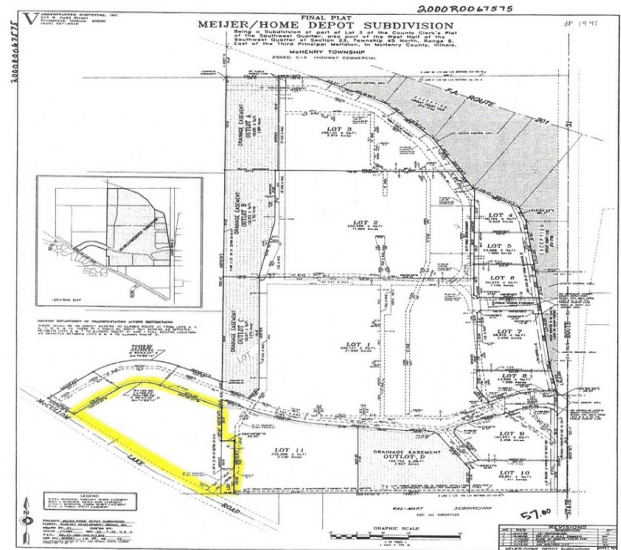
HeatherS@PremierCommercialRealty.com

3810 McCULLOM LAKE ROAD McHENRY, IL 60050

FOR SALE



3810 McCullom Lake Rd - 5.9 Acre Development Site



PREMIER
COMMERCIAL REALTY

- Industrial
- Commercial
- Office
- Land
- Business

[CLICK HERE](#)
to view our website

9225 S. IL Route 31
Lake in the Hills, IL 60156
www.PremierCommercialRealty.com
Office: 847-854-2300 | Fax: 847-854-2380