



108 E. 38th Street Sioux Falls, SD 57105

Lease Rate	\$1,500.00/MONTH
Rentable Square Feet	1,152 SF

PROPERTY HIGHLIGHTS

- In-suite kitchenette with full size fridge, dishwasher, microwave, and sink
- Common area conference room for tenant's use
- Internet included
- storage space in lower level
- Illuminated exterior monument sign
- Inside building directory
- Exterior security camera
- On-site management
- Conference room table included, if needed

LOCATION DESCRIPTION

Located on E. 38th Street just east of Phillips Avenue
Great Central location
Neighbors include Hy-Vee, 605 Academy, Houndstooth House, GreatLIFE

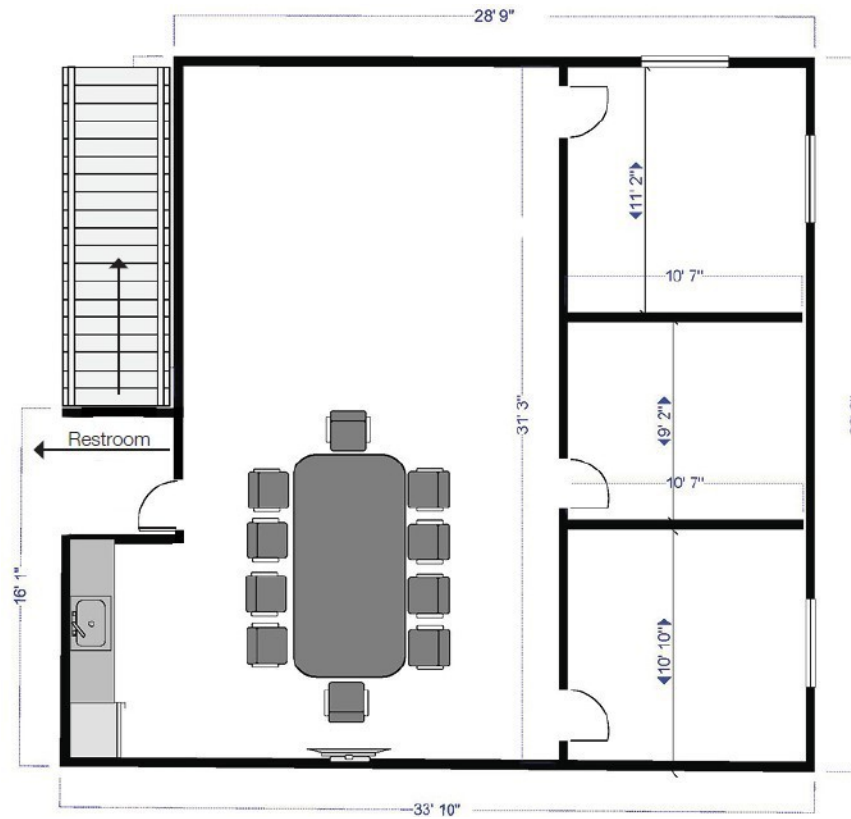


PHOTOS

108 E. 38TH STREET
Sioux Falls, SD 57105

FOR LEASE

Office Building



AERIAL

108 E. 38TH STREET
Sioux Falls, SD 57105

FOR LEASE

Office Building

