

Golden Gateway

Madison Street & Veterans Parkway, Sioux Falls, SD 57110

Property Features

- Development land on Highway 100, south of the new I-90 exit
- Zoning: Commercial
- Various lots remain, see page 2 for details

Price

- Commercial [C-3]: \$12.00/ sq. ft.
- Live/Work [LW]: \$6.00 - \$8.00/ sq. ft.

Location

- North of Madison Street on Highway 100
- Area neighbors include: Foss Fields Development, Issac Walton, Menards, Dawley Farms

Craig Hagen, CCIM, SIOR
Senior Vice President

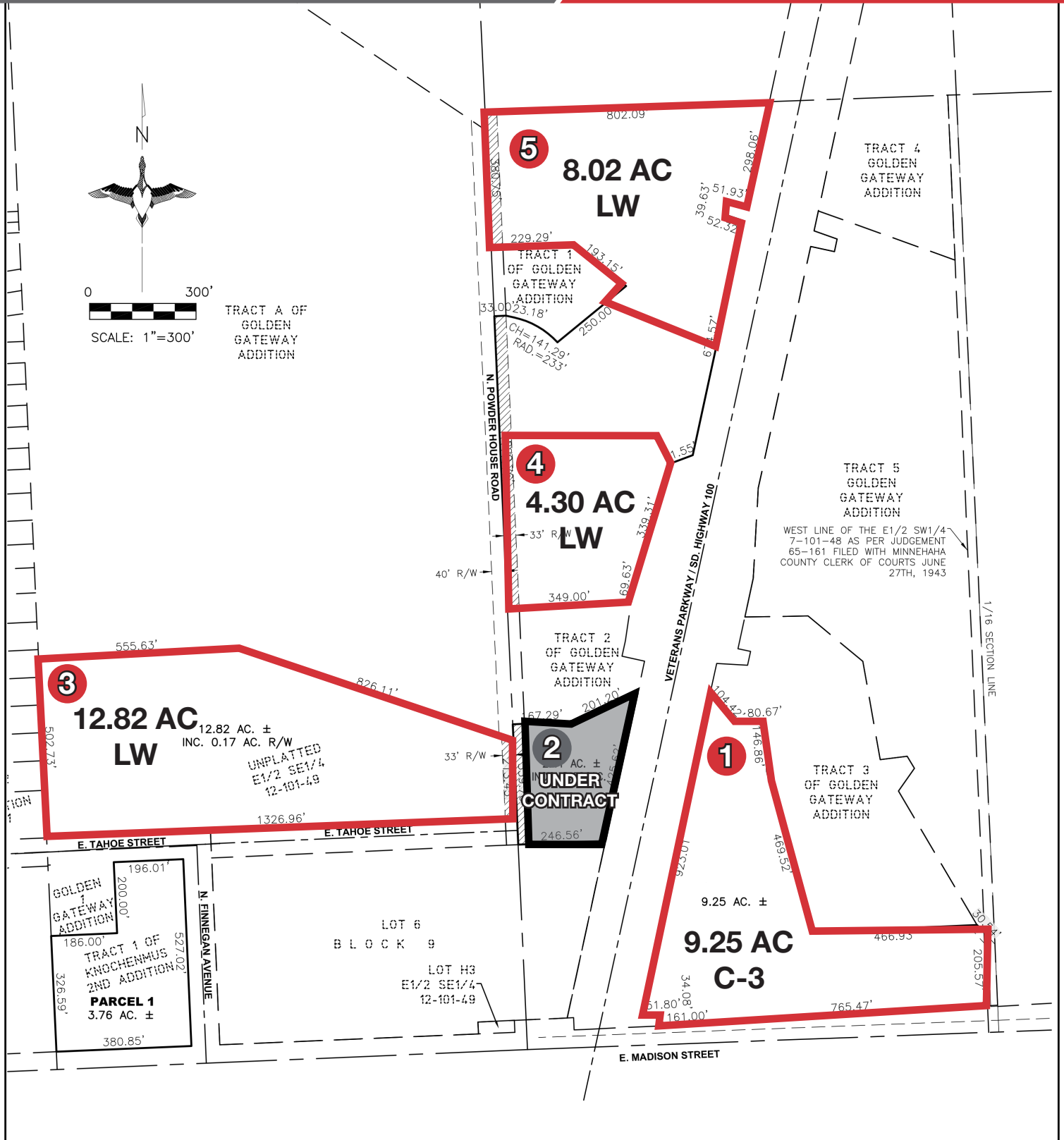
605 310 4227 • chagen@naisiouxfalls.com

Gregg Brown, MBA, SIOR
Senior Vice President, Managing Director

605 906 0394 • gbrown@naisiouxfalls.com

SITE PLAN

For Sale
Commercial Land



PARCELS

For Sale
Commercial Land



New Brandon Valley Elementary School
located just north



OFFICE CONCEPT FOR LOT 2

For Sale
Commercial Land



STONE GROUP
ARCHITECTS



STONE GROUP
ARCHITECTS

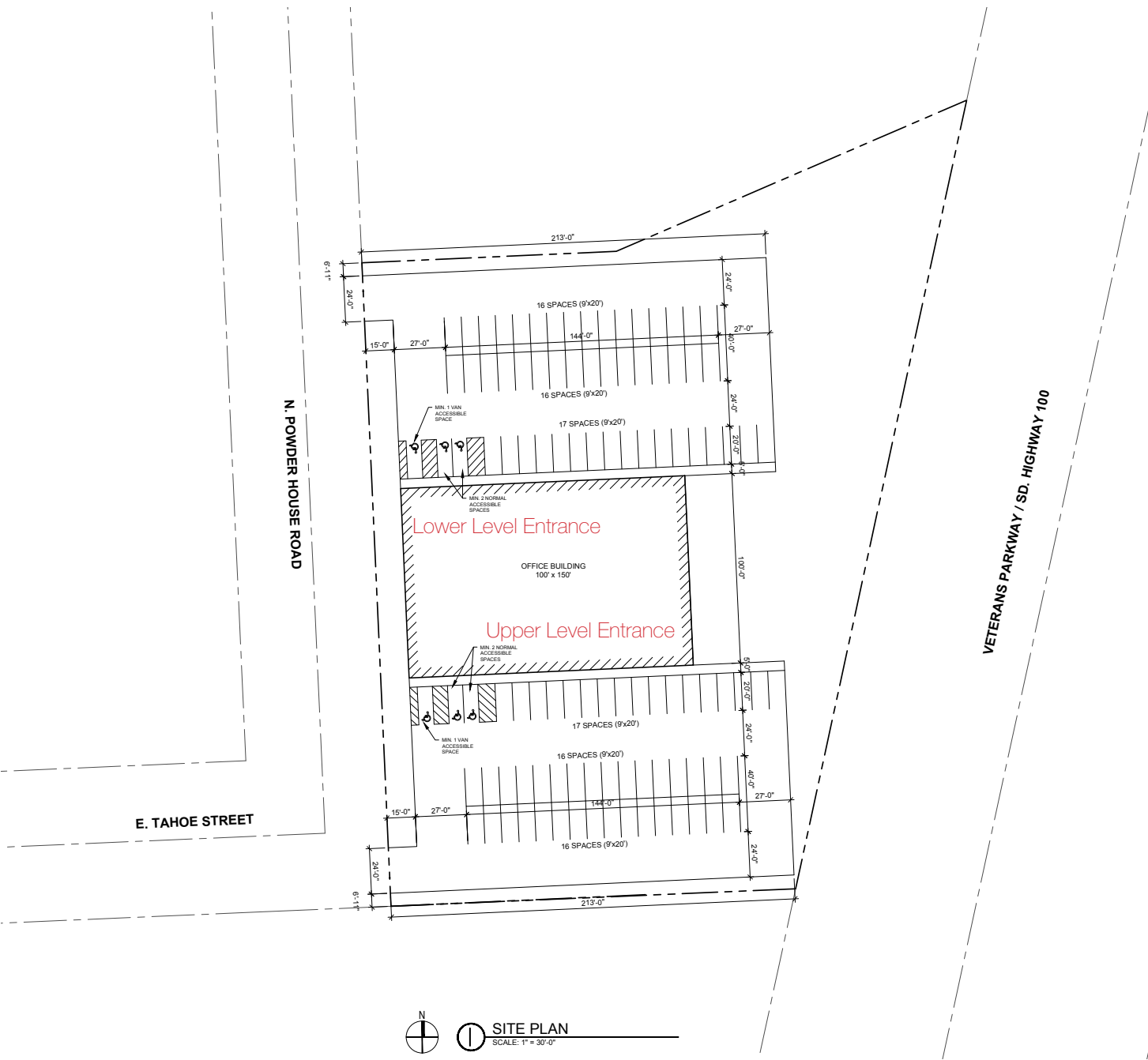


NAI Sioux Falls

2500 W. 49th Street, Suite 100
Sioux Falls, SD 57105
605 357 7100
naisiouxfalls.com

OFFICE CONCEPT FOR LOT 2

For Sale
Commercial Land



MAP

For Sale
Commercial Land

