

FOR LEASE

1247 NE Medical Center Dr | Bend, OR 97701



Offering Summary

| | |
|---------------|----------------------|
| Lease Space | 6,018 SF |
| Lease Rate | \$2.00 SF/MO+NNN |
| Building Size | 9,624 SF |
| Lot Size | 1.17 AC |
| Zoning | RH (Medical Overlay) |
| Parking | +/- 50 (3 ADA) |
| ADT | 17,974 on NE 27th |

Property Highlights

Move-in ready medical/dental space with plenty of parking two blocks from St Charles Medical Campus. 12 exam rooms with sinks, 6 private offices, ample file storage, bookkeeping and support staff areas. Spacious waiting room with private building entrance and four in-suite restrooms. Building and directory signage. New flooring to be installed at with lease agreement. Great traffic counts on 27th St in the Eastside medical district in Bend. Located in the center of a robust retirement community.



Walt Ramage, Partner
Licensed Oregon Broker
+1 541 771 8260
wramage@naicascade.com

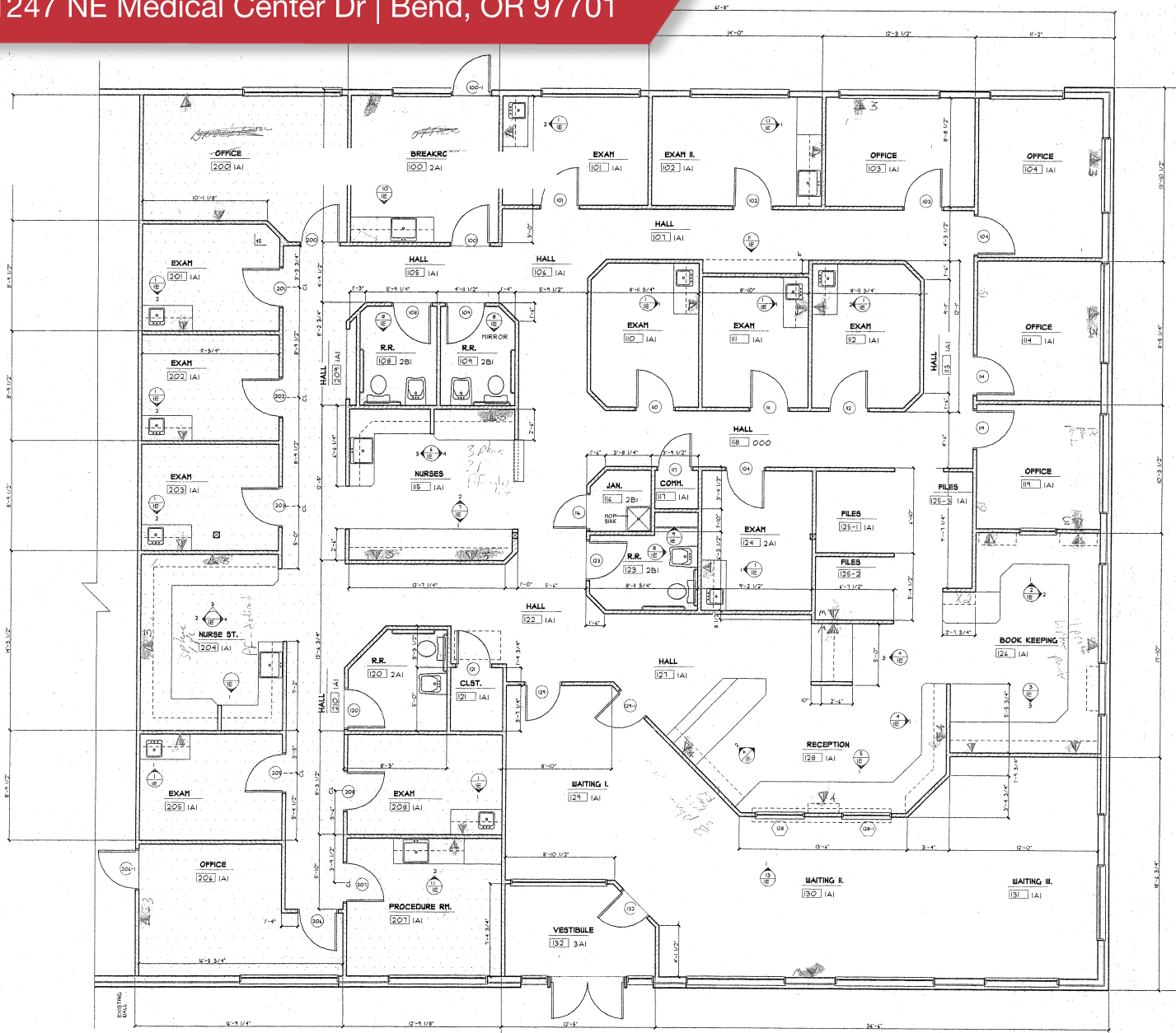
The information contained in the Marketing Brochure has been obtained from sources we believe to be reliable; however, Broker has not verified, and will not verify, any of the information contained herein, nor has Broker conducted any investigation regarding these matters and makes no warranty or representation whatsoever regarding the accuracy or completeness of the information provided including but not limited to square footage. All potential purchasers must take appropriate measures to verify all of the information set forth herein.



243 SW Scalehouse Lp
Suite 1B
Bend, OR 97702
NAICascade.com

FOR LEASE

1247 NE Medical Center Dr | Bend, OR 97701



FOR LEASE

1247 NE Medical Center Dr | Bend, OR 97701



Walt Ramage, Partner

Licensed Oregon Broker

+1 541 771 8260

wramage@naicascade.com

The information contained in the Marketing Brochure has been obtained from sources we believe to be reliable; however, Broker has not verified, and will not verify, any of the information contained herein, nor has Broker conducted any investigation regarding these matters and makes no warranty or representation whatsoever regarding the accuracy or completeness of the information provided including but not limited to square footage. All potential purchasers must take appropriate measures to verify all of the information set forth herein.

NAI Cascade

FOR LEASE

1247 NE Medical Center Dr | Bend, OR 97701



Walt Ramage
Licensed Oregon Broker
+1 541 771 8260
wramage@naicascade.com

The information contained in the Marketing Brochure has been obtained from sources we believe to be reliable; however, Broker has not verified, and will not verify, any of the information contained herein, nor has Broker conducted any investigation regarding these matters and makes no warranty or representation whatsoever regarding the accuracy or completeness of the information provided including but not limited to square footage. All potential purchasers must take appropriate measures to verify all of the information set forth herein.

NAI Cascade