

FOR LEASE

BOUTIQUE PROFESSIONAL OFFICE BUILDING

835 WILSHIRE BLVD, LOS ANGELES, CA 90017

 **Kidder
Mathews**

FOR LEASE

835 WILSHIRE BLVD

ASKING RATE \$30.00/SF/year, full service gross

FULLY built out spaces immediately available

EXCELLENT proximity to retail, residential projects, restaurants & civic centers

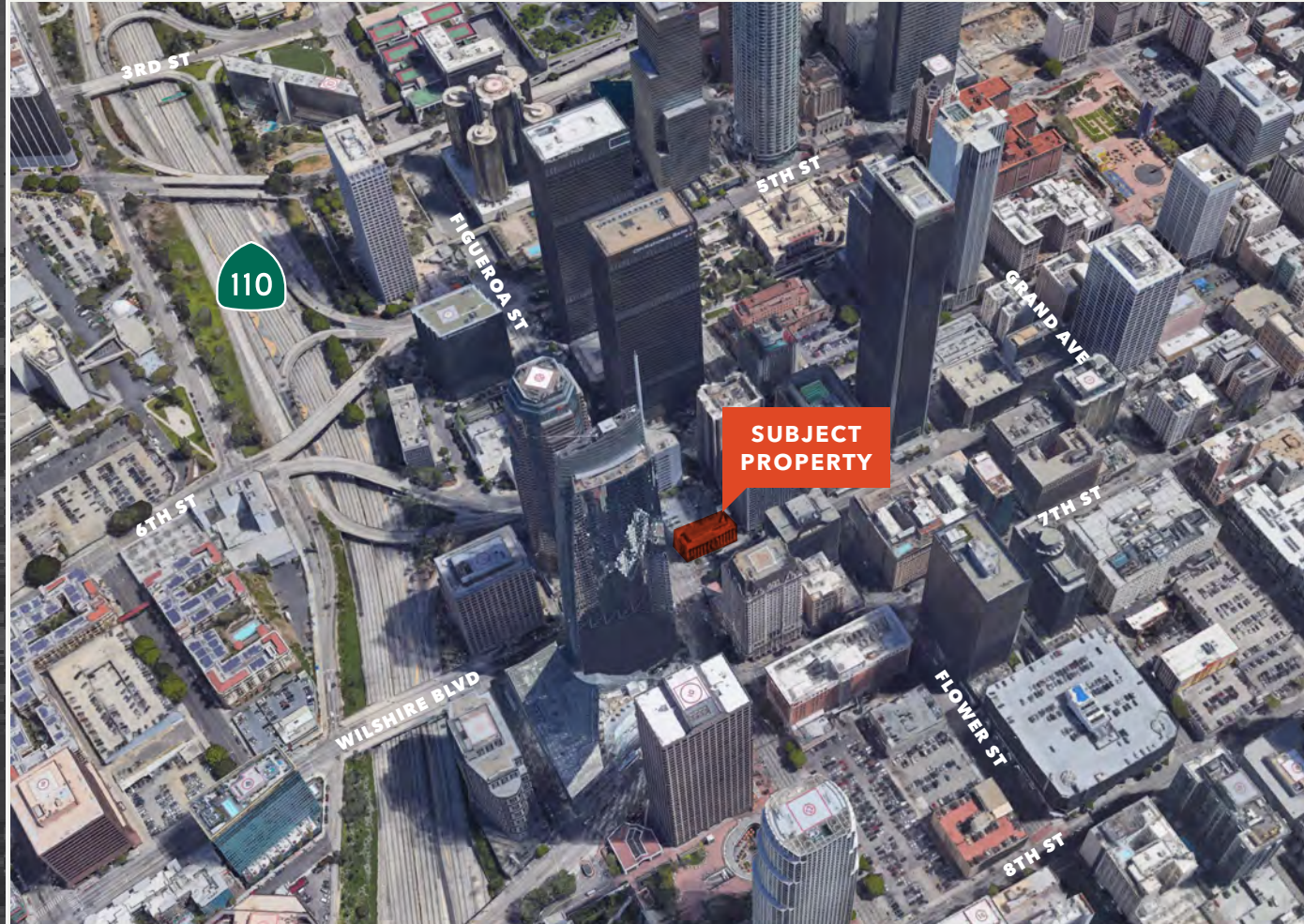
IDEAL corner location on Wilshire Blvd & Figueroa St

OPPOSITE corner from the new Wilshire Grand Center development site

PARKING RATIO of 1:1000 for \$250/car/month; adjacent parking for \$200/car/month

AVAILABILITIES

| Suite Number | Square Feet |
|--------------|-------------|
| 100 | 6,083 RSF |
| 201 | 1,848 RSF |
| 400 | 6,287 RSF |
| 600 | 1,564 RSF |



For leasing information contact

JOHN ANTHONY, SIOR
213.225.7218
john.anthony@kidder.com
LIC N° 01226464

CHRISTOPHER GIORDANO
213.225.7519
christopher.giordano@kidder.com
LIC N° 01928706

CHRISTOPHER STECK
213.225.7231
christopher.steck@kidder.com
LIC N° 01841338

PHILLIP TAGGART
213.225.7237
phillip.taggart@kidder.com
LIC N° 02149291

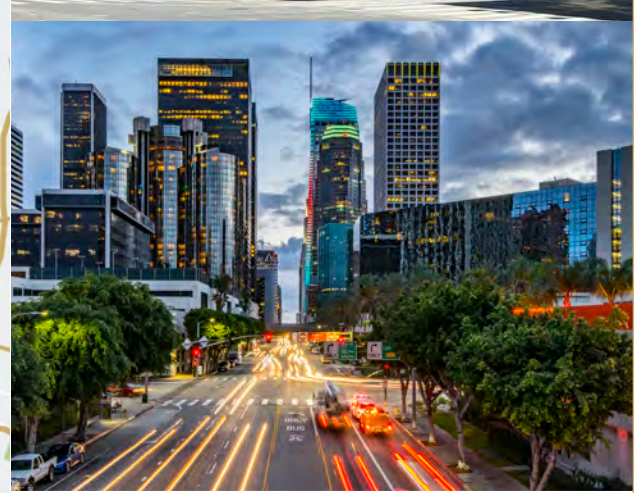
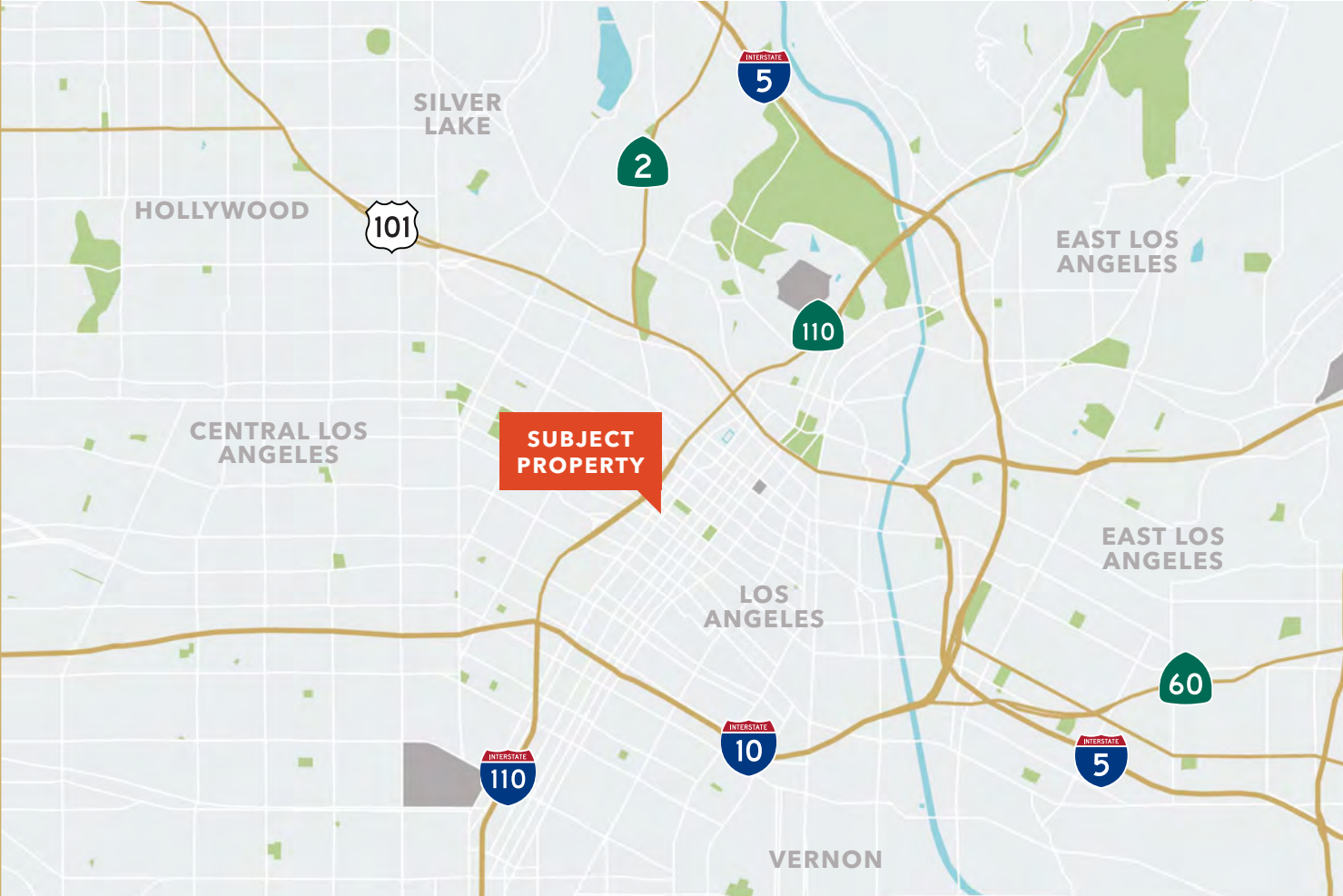
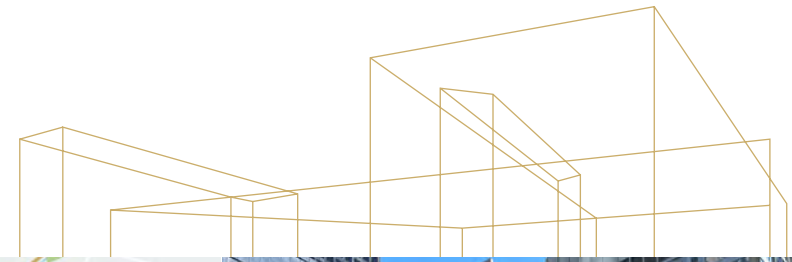
KIDDER.COM

This information supplied herein is from sources we deem reliable. It is provided without any representation, warranty, or guarantee, expressed or implied as to its accuracy. Prospective Buyer or Tenant should conduct an independent investigation and verification of all matters deemed to be material, including, but not limited to, statements of income and expenses. Consult your attorney, accountant, or other professional advisor.



FOR LEASE

835 WILSHIRE BLVD



For leasing information contact

JOHN ANTHONY, SIOR
213.225.7218
john.anthony@kidder.com
LIC N° 01226464

CHRISTOPHER GIORDANO
213.225.7519
christopher.giordano@kidder.com
LIC N° 01928706

CHRISTOPHER STECK
213.225.7231
christopher.steck@kidder.com
LIC N° 01841338

PHILLIP TAGGART
213.225.7237
phillip.taggart@kidder.com
LIC N° 02149291

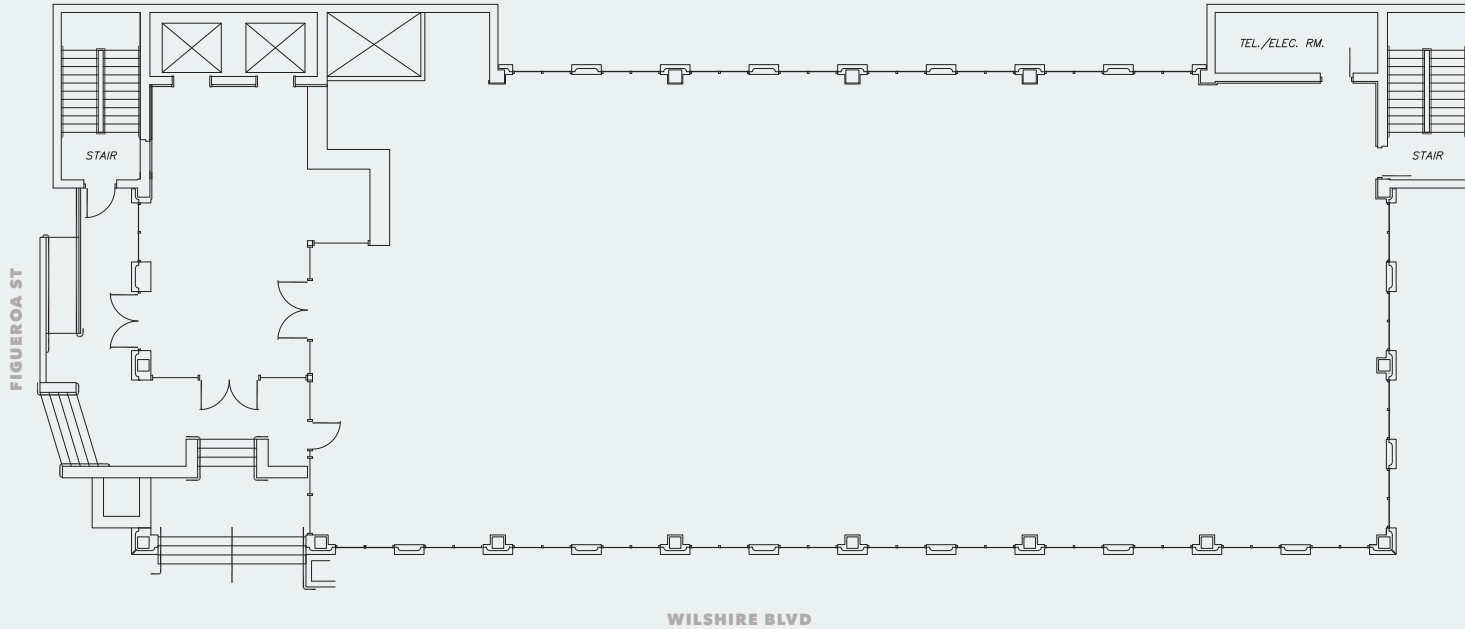
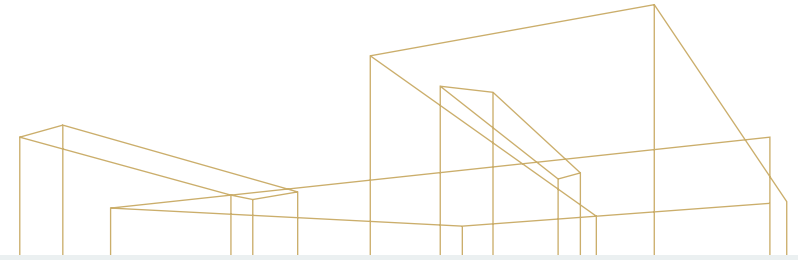
KIDDER.COM

This information supplied herein is from sources we deem reliable. It is provided without any representation, warranty, or guarantee, expressed or implied as to its accuracy. Prospective Buyer or Tenant should conduct an independent investigation and verification of all matters deemed to be material, including, but not limited to, statements of income and expenses. Consult your attorney, accountant, or other professional advisor.



FOR LEASE

835 WILSHIRE BLVD



SUITE 100

6,083 SF

OFFICE OR RETAIL SPACE

For leasing
information
contact

JOHN ANTHONY, SIOR
213.225.7218
john.anthony@kidder.com
LIC N° 01226464

CHRISTOPHER GIORDANO
213.225.7519
christopher.giordano@kidder.com
LIC N° 01928706

CHRISTOPHER STECK
213.225.7231
christopher.steck@kidder.com
LIC N° 01841338

PHILLIP TAGGART
213.225.7237
phillip.taggart@kidder.com
LIC N° 02149291

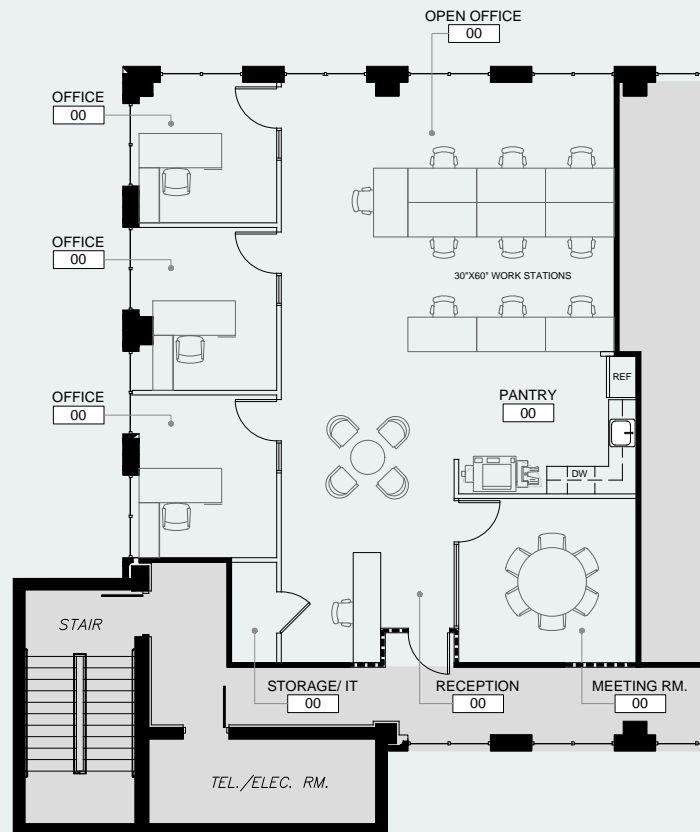
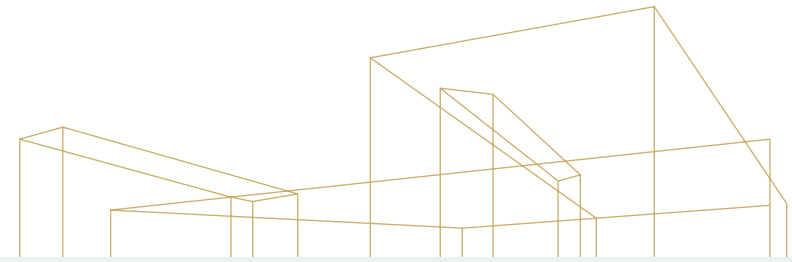
KIDDER.COM

This information supplied herein is from sources we deem reliable. It is provided without any representation, warranty, or guarantee, expressed or implied as to its accuracy. Prospective Buyer or Tenant should conduct an independent investigation and verification of all matters deemed to be material, including, but not limited to, statements of income and expenses. Consult your attorney, accountant, or other professional advisor.



FOR LEASE

835 WILSHIRE BLVD



SUITE 201

1,848 SF

OFFICE SPACE

For leasing
information
contact

JOHN ANTHONY, SIOR
213.225.7218
john.anthony@kidder.com
LIC N° 01226464

CHRISTOPHER GIORDANO
213.225.7519
christopher.giordano@kidder.com
LIC N° 01928706

CHRISTOPHER STECK
213.225.7231
christopher.steck@kidder.com
LIC N° 01841338

PHILLIP TAGGART
213.225.7237
phillip.taggart@kidder.com
LIC N° 02149291

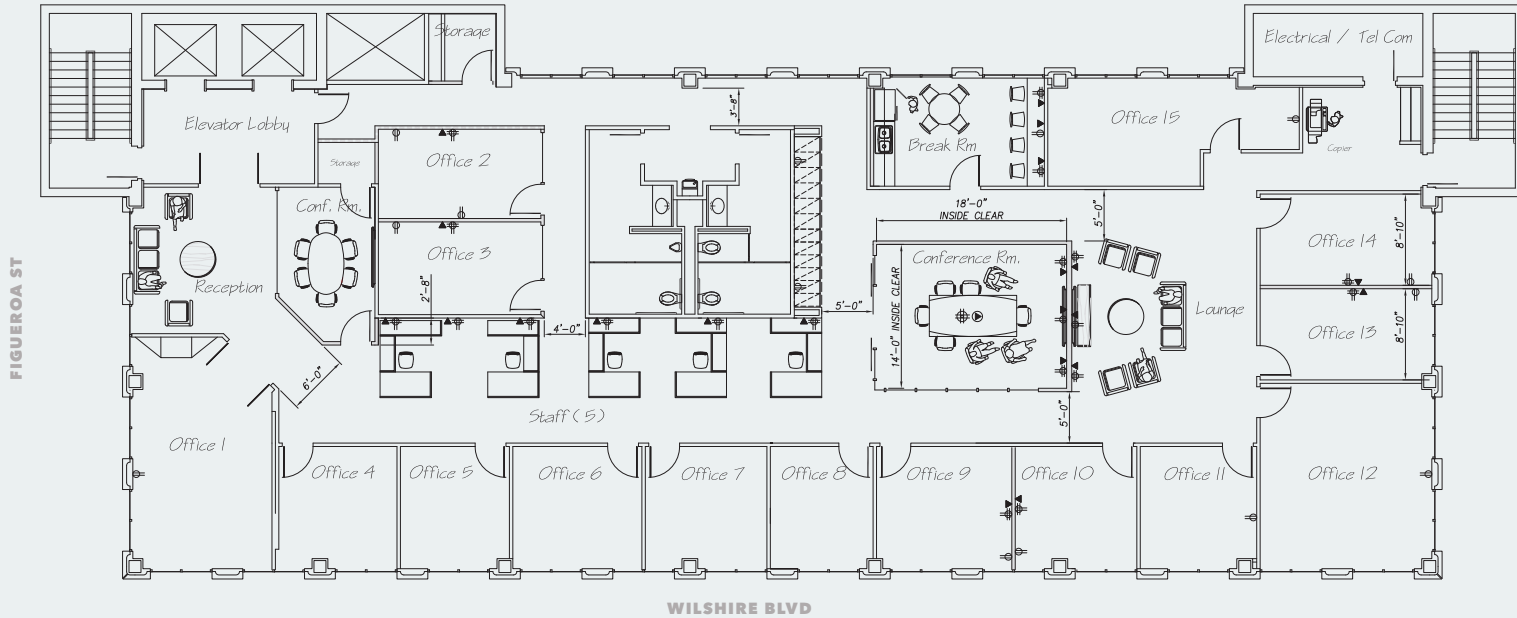
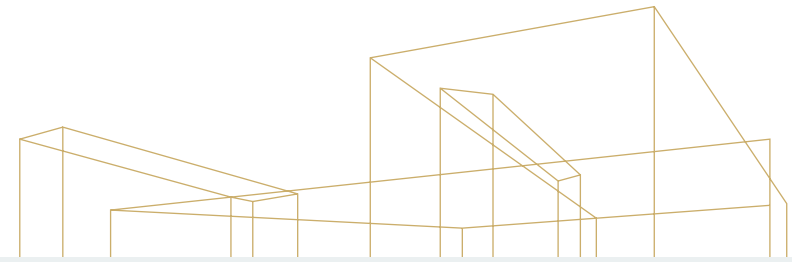
KIDDER.COM

This information supplied herein is from sources we deem reliable. It is provided without any representation, warranty, or guarantee, expressed or implied as to its accuracy. Prospective Buyer or Tenant should conduct an independent investigation and verification of all matters deemed to be material, including, but not limited to, statements of income and expenses. Consult your attorney, accountant, or other professional advisor.



FOR LEASE

835 WILSHIRE BLVD



SUITE 400

6,287 SF

OFFICE SPACE

For leasing
information
contact

JOHN ANTHONY, SIOR
213.225.7218
john.anthony@kidder.com
LIC N° 01226464

CHRISTOPHER GIORDANO
213.225.7519
christopher.giordano@kidder.com
LIC N° 01928706

CHRISTOPHER STECK
213.225.7231
christopher.steck@kidder.com
LIC N° 01841338

PHILLIP TAGGART
213.225.7237
phillip.taggart@kidder.com
LIC N° 02149291

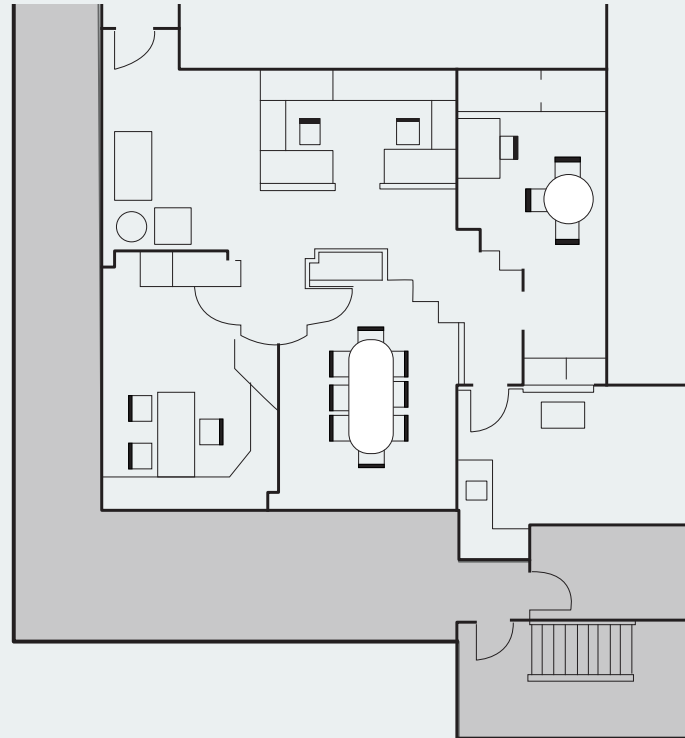
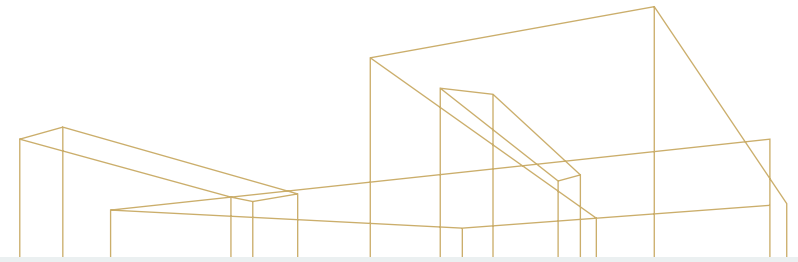
KIDDER.COM

This information supplied herein is from sources we deem reliable. It is provided without any representation, warranty, or guarantee, expressed or implied as to its accuracy. Prospective Buyer or Tenant should conduct an independent investigation and verification of all matters deemed to be material, including, but not limited to, statements of income and expenses. Consult your attorney, accountant, or other professional advisor.



FOR LEASE

835 WILSHIRE BLVD



SUITE 600

1,564 SF

OFFICE SPACE

For leasing
information
contact

JOHN ANTHONY, SIOR
213.225.7218
john.anthony@kidder.com
LIC N° 01226464

CHRISTOPHER GIORDANO
213.225.7519
christopher.giordano@kidder.com
LIC N° 01928706

CHRISTOPHER STECK
213.225.7231
christopher.steck@kidder.com
LIC N° 01841338

PHILLIP TAGGART
213.225.7237
phillip.taggart@kidder.com
LIC N° 02149291

KIDDER.COM

This information supplied herein is from sources we deem reliable. It is provided without any representation, warranty, or guarantee, expressed or implied as to its accuracy. Prospective Buyer or Tenant should conduct an independent investigation and verification of all matters deemed to be material, including, but not limited to, statements of income and expenses. Consult your attorney, accountant, or other professional advisor.

