



FOR LEASE

# Boutique Office/Retail/Creative Space

1137 W 6TH ST, LOS ANGELES, CA 90017



**JOHN ANTHONY, SIOR**  
213.225.7218  
[john.anthony@kidder.com](mailto:john.anthony@kidder.com)  
LIC N° 01226464

**CHRISTOPHER STECK, CCIM**  
213.225.7231  
[christopher.steck@kidder.com](mailto:christopher.steck@kidder.com)  
LIC N° 01841338

**CHRISTOPHER GIORDANO**  
213.225.7219  
[christopher.giordano@kidder.com](mailto:christopher.giordano@kidder.com)  
LIC N° 01928706

**HEATHER ISENBERG**  
213.225.7224  
[heather.isenberg@kidder.com](mailto:heather.isenberg@kidder.com)  
LIC N° 02092099



This information supplied herein is from sources we deem reliable. It is provided without any representation, warranty, or guarantee, expressed or implied as to its accuracy. Prospective Buyer or Tenant should conduct an independent investigation and verification of all matters deemed to be material, including, but not limited to, statements of income and expenses. Consult your attorney, accountant, or other professional advisor.

[TEAM-ASG.COM](http://TEAM-ASG.COM)  
[KIDDER.COM](http://KIDDER.COM)

**FOR LEASE**

# Boutique Office/Retail/Creative Space

1137 W 6TH ST, LOS ANGELES, CA 90017

**1,500 SF**

TOTAL SIZE

**\$3.00 MG**

ASKING RATE PSF

**BRAND NEW** renovation and interior improvements

**EXTERIOR** building signage available

**MIXTURE** of open plan and private offices/rooms

**BOUTIQUE** office, retail, and creative space

**ON-SITE** gated surface parking with direct access

**SECURE** building with security cameras and gated parking

**NEW** power, lighting, air conditioning, and more

**JOHN ANTHONY, SIOR**

213.225.7218

[john.anthony@kidder.com](mailto:john.anthony@kidder.com)

LIC N° 01226464

**CHRISTOPHER STECK, CCIM**

213.225.7231

[christopher.steck@kidder.com](mailto:christopher.steck@kidder.com)

LIC N° 01841338

**CHRISTOPHER GIORDANO**

213.225.7219

[christopher.giordano@kidder.com](mailto:christopher.giordano@kidder.com)

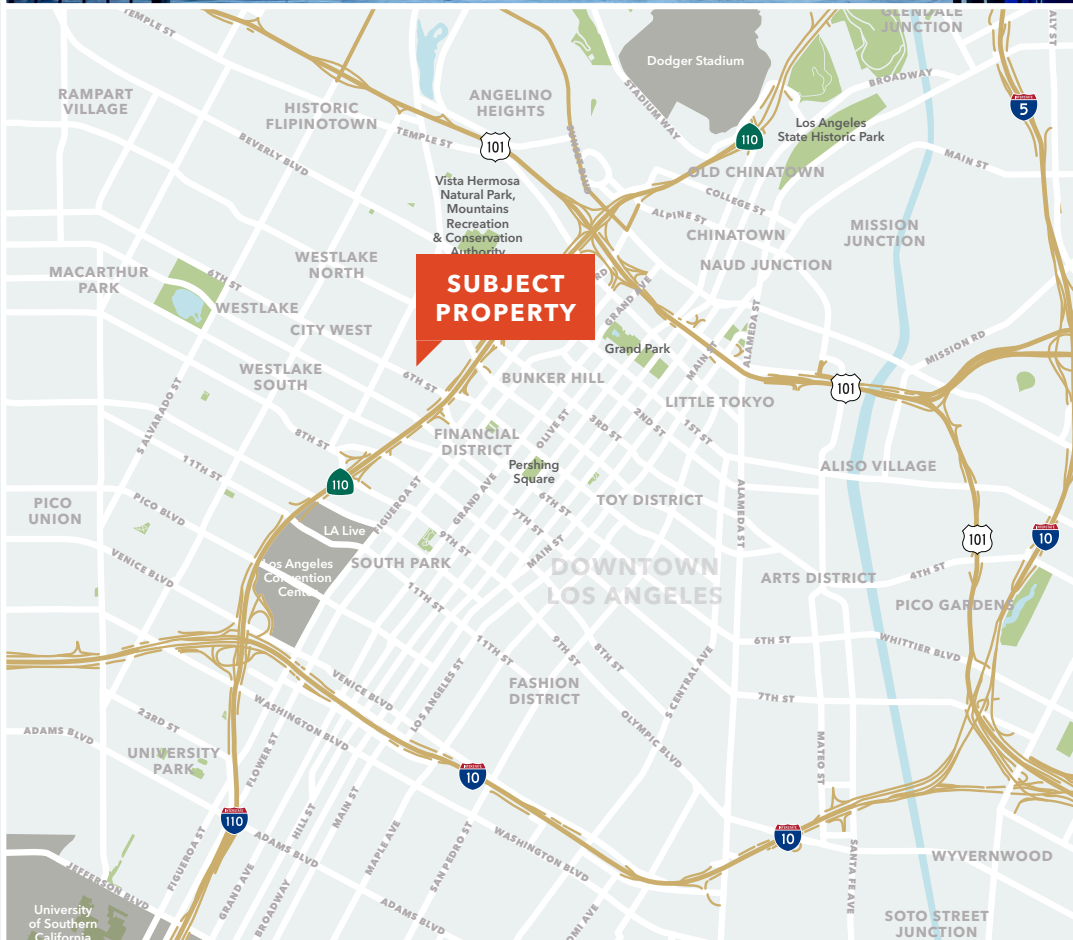
LIC N° 01928706

**HEATHER ISENBERG**

213.225.7224

[heather.isenberg@kidder.com](mailto:heather.isenberg@kidder.com)

LIC N° 02092099



**TEAM-ASG.COM | KIDDER.COM**

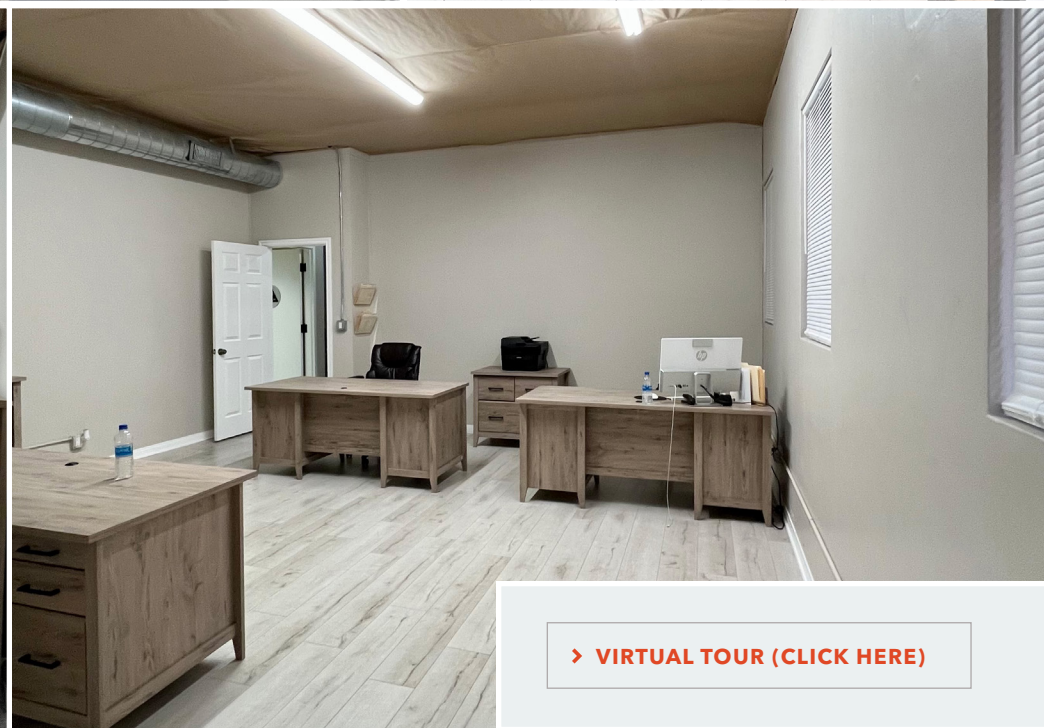
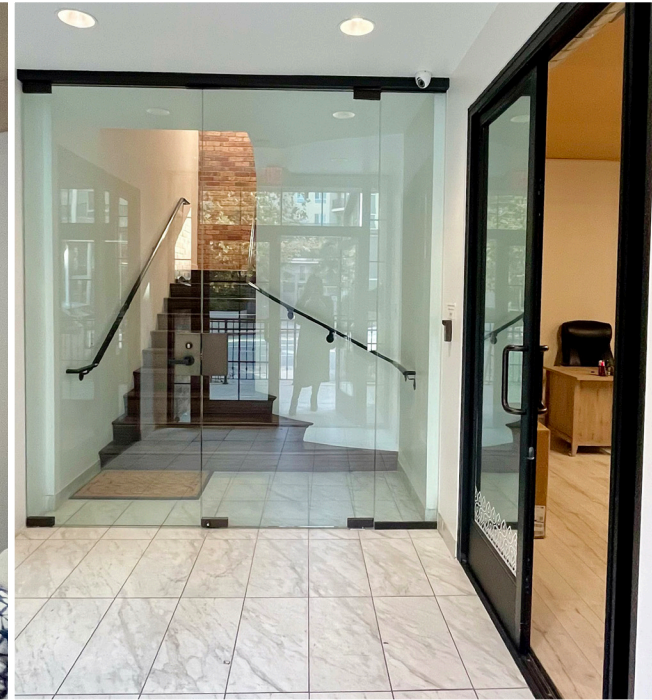


This information supplied herein is from sources we deem reliable. It is provided without any representation, warranty, or guarantee, expressed or implied as to its accuracy. Prospective Buyer or Tenant should conduct an independent investigation and verification of all matters deemed to be material, including, but not limited to, statements of income and expenses. Consult your attorney, accountant, or other professional advisor.

**FOR LEASE**

# Boutique Office/Retail/Creative Space

1137 W 6TH ST, LOS ANGELES, CA 90017



[> VIRTUAL TOUR \(CLICK HERE\)](#)

**JOHN ANTHONY, SIOR**

213.225.7218

[john.anthony@kidder.com](mailto:john.anthony@kidder.com)

LIC N° 01226464

**CHRISTOPHER STECK, CCIM**

213.225.7231

[christopher.steck@kidder.com](mailto:christopher.steck@kidder.com)

LIC N° 01841338

**CHRISTOPHER GIORDANO**

213.225.7219

[christopher.giordano@kidder.com](mailto:christopher.giordano@kidder.com)

LIC N° 01928706

**HEATHER ISENBERG**

213.225.7224

[heather.isenberg@kidder.com](mailto:heather.isenberg@kidder.com)

LIC N° 02092099

[TEAM-ASG.COM](http://TEAM-ASG.COM) | [KIDDER.COM](http://KIDDER.COM)

This information supplied herein is from sources we deem reliable. It is provided without any representation, warranty, or guarantee, expressed or implied as to its accuracy. Prospective Buyer or Tenant should conduct an independent investigation and verification of all matters deemed to be material, including, but not limited to, statements of income and expenses. Consult your attorney, accountant, or other professional advisor.



**FOR LEASE**

# Boutique Office/Retail/Creative Space

1137 W 6TH ST, LOS ANGELES, CA 90017



**ROOFTOP VIEW**



**JOHN ANTHONY, SIOR**

213.225.7218

[john.anthony@kiddier.com](mailto:john.anthony@kiddier.com)

LIC N° 01226464

**CHRISTOPHER STECK, CCIM**

213.225.7231

[christopher.steck@kiddier.com](mailto:christopher.steck@kiddier.com)

LIC N° 01841338

**CHRISTOPHER GIORDANO**

213.225.7219

[christopher.giordano@kiddier.com](mailto:christopher.giordano@kiddier.com)

LIC N° 01928706

**HEATHER ISENBERG**

213.225.7224

[heather.isenberg@kiddier.com](mailto:heather.isenberg@kiddier.com)

LIC N° 02092099

[TEAM-ASG.COM](http://TEAM-ASG.COM) | [KIDDER.COM](http://KIDDER.COM)

This information supplied herein is from sources we deem reliable. It is provided without any representation, warranty, or guarantee, expressed or implied as to its accuracy. Prospective Buyer or Tenant should conduct an independent investigation and verification of all matters deemed to be material, including, but not limited to, statements of income and expenses. Consult your attorney, accountant, or other professional advisor.



FOR LEASE

# Boutique Office/Retail/Creative Space

1137 W 6TH ST, LOS ANGELES, CA 90017



**JOHN ANTHONY, SIOR**  
213.225.7218  
[john.anthony@kidder.com](mailto:john.anthony@kidder.com)  
LIC N° 01226464

**CHRISTOPHER STECK, CCM**  
213.225.7231  
[christopher.steck@kidder.com](mailto:christopher.steck@kidder.com)  
LIC N° 01841338

**CHRISTOPHER GIORDANO**  
213.225.7219  
[christopher.giordano@kidder.com](mailto:christopher.giordano@kidder.com)  
LIC N° 01928706

**HEATHER ISENBERG**  
213.225.7224  
[heather.isenberg@kidder.com](mailto:heather.isenberg@kidder.com)  
LIC N° 02092099

TEAM-ASG.COM | KIDDER.COM

This information supplied herein is from sources we deem reliable. It is provided without any representation, warranty, or guarantee, expressed or implied as to its accuracy. Prospective Buyer or Tenant should conduct an independent investigation and verification of all matters deemed to be material, including, but not limited to, statements of income and expenses. Consult your attorney, accountant, or other professional advisor.

