

OFFICE CONDO FOR LEASE 1148 EXECUTIVE CIRCLE, UNIT 3

Cary, NC 27511



COMMERCIAL REAL ESTATE SERVICES
RALEIGH DURHAM



PROPERTY DESCRIPTION

±1,277 SF office condo for lease in Executive Circle Office Park, conveniently located near dozens of amenities at Kildaire Farm Road.

PROPERTY HIGHLIGHTS

- ±1,277 SF office condo
- Available March 1, 2023
- Three offices, conference room, reception, break area, and storage
- New carpet and fresh paint
- Ample restaurants and retail nearby
- Lease Rate: \$2,200/month modified gross
- Landlord pays taxes, insurance, and owners association dues
- Tenant responsible for utilities, janitorial, phone, and data



Moss Withers, SIOR, MBA
mwithers@lee-associates.com
O: 919.576.2501
C: 919.576.2501

Karah Jennings McConnell
kjennings@lee-associates.com
O: 919.576.2502
C: 919.817.0705

Stone Alexander, CPA
salexander@lee-associates.com
O: 919.591.2275
C: 919.600.2397

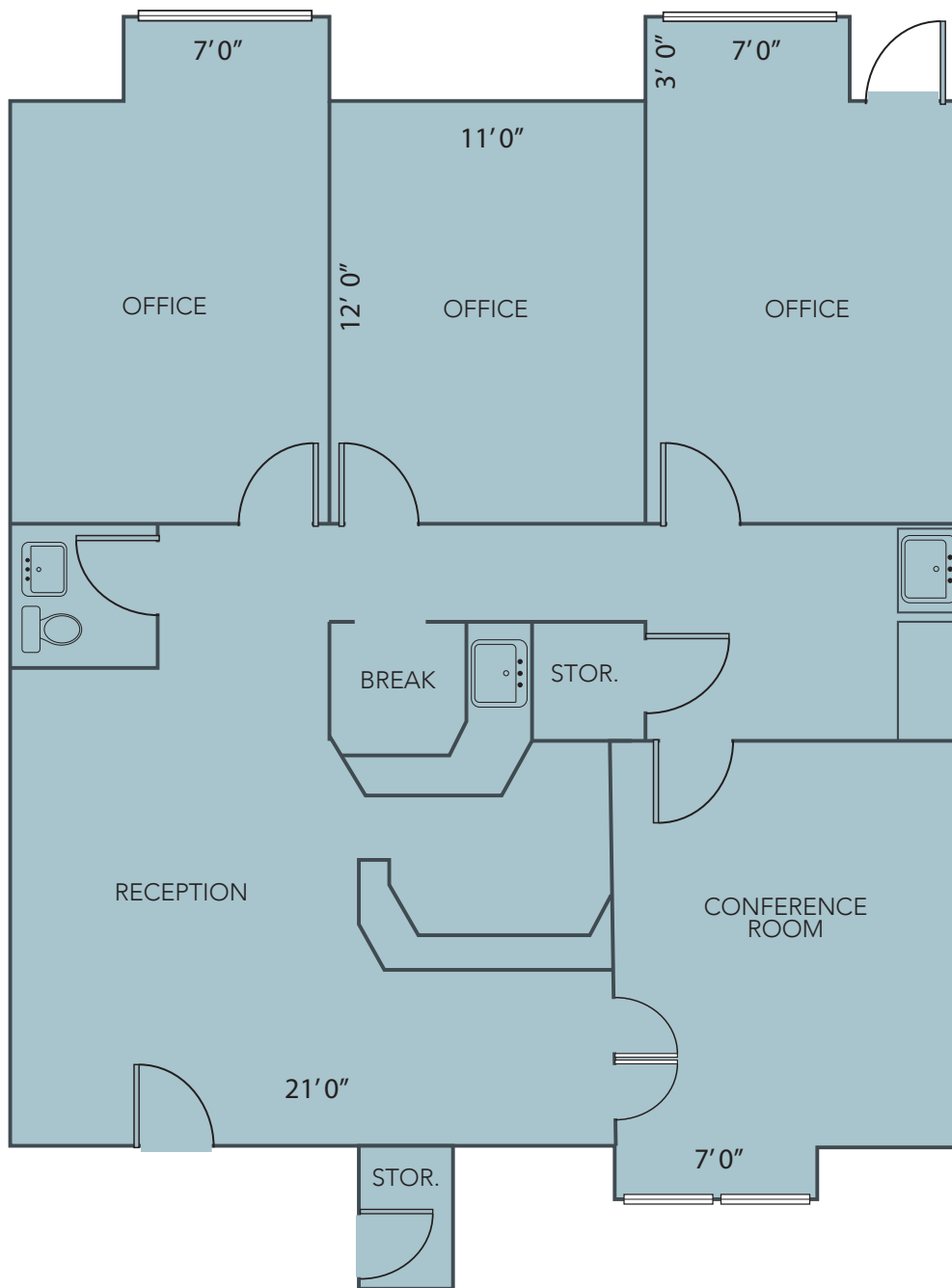
All information furnished regarding property for sale, rental or financing is from sources deemed reliable, but no warranty or representation is made to the accuracy thereof and same is submitted to errors, omissions, change of price, rental or other conditions prior to sale, lease or financing or withdrawal without notice.
No liability of any kind is to be imposed on the broker herein.

OFFICE CONDO FOR LEASE 1148 EXECUTIVE CIRCLE, UNIT 3

Cary, NC 27511



COMMERCIAL REAL ESTATE SERVICES
RALEIGH DURHAM



Moss Withers, SIOR, MBA
mwithers@lee-associates.com
O: 919.576.2501
C: 919.576.2501

Karah Jennings McConnell
kjennings@lee-associates.com
O: 919.576.2502
C: 919.817.0705

Stone Alexander, CPA
salexander@lee-associates.com
O: 919.591.2275
C: 919.600.2397

O:
C:

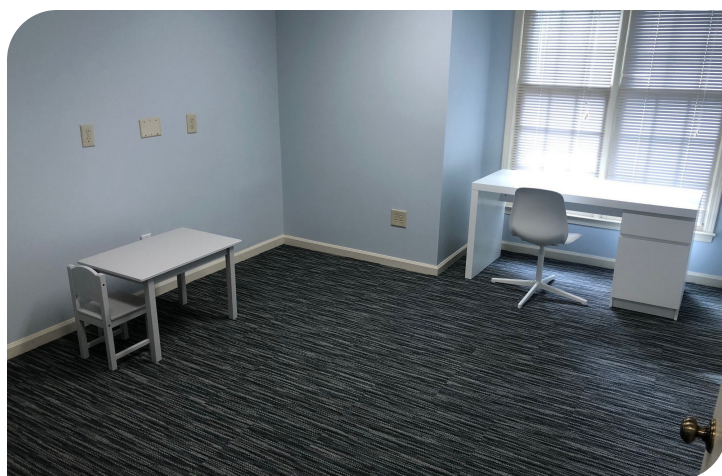
All information furnished regarding property for sale, rental or financing is from sources deemed reliable, but no warranty or representation is made to the accuracy thereof and same is submitted to errors, omissions, change of price, rental or other conditions prior to sale, lease or financing or withdrawal without notice. No liability of any kind is to be imposed on the broker herein.

OFFICE CONDO FOR LEASE 1148 EXECUTIVE CIRCLE, UNIT 3

Cary, NC 27511



COMMERCIAL REAL ESTATE SERVICES
RALEIGH DURHAM



Moss Withers, SIOR, MBA
mwithers@lee-associates.com
O: 919.576.2501
C: 919.576.2501

Karah Jennings McConnell
kjennings@lee-associates.com
O: 919.576.2502
C: 919.817.0705

Stone Alexander, CPA
salexander@lee-associates.com
O: 919.591.2275
C: 919.600.2397

All information furnished regarding property for sale, rental or financing is from sources deemed reliable, but no warranty or representation is made to the accuracy thereof and same is submitted to errors, omissions, change of price, rental or other conditions prior to sale, lease or financing or withdrawal without notice.
No liability of any kind is to be imposed on the broker herein.

OFFICE CONDO FOR LEASE 1148 EXECUTIVE CIRCLE, UNIT 3

Cary, NC 27511



Moss Withers, SIOR, MBA
mwithers@lee-associates.com
O: 919.576.2501
C: 919.576.2501

Karah Jennings McConnell
kjennings@lee-associates.com
O: 919.576.2502
C: 919.817.0705

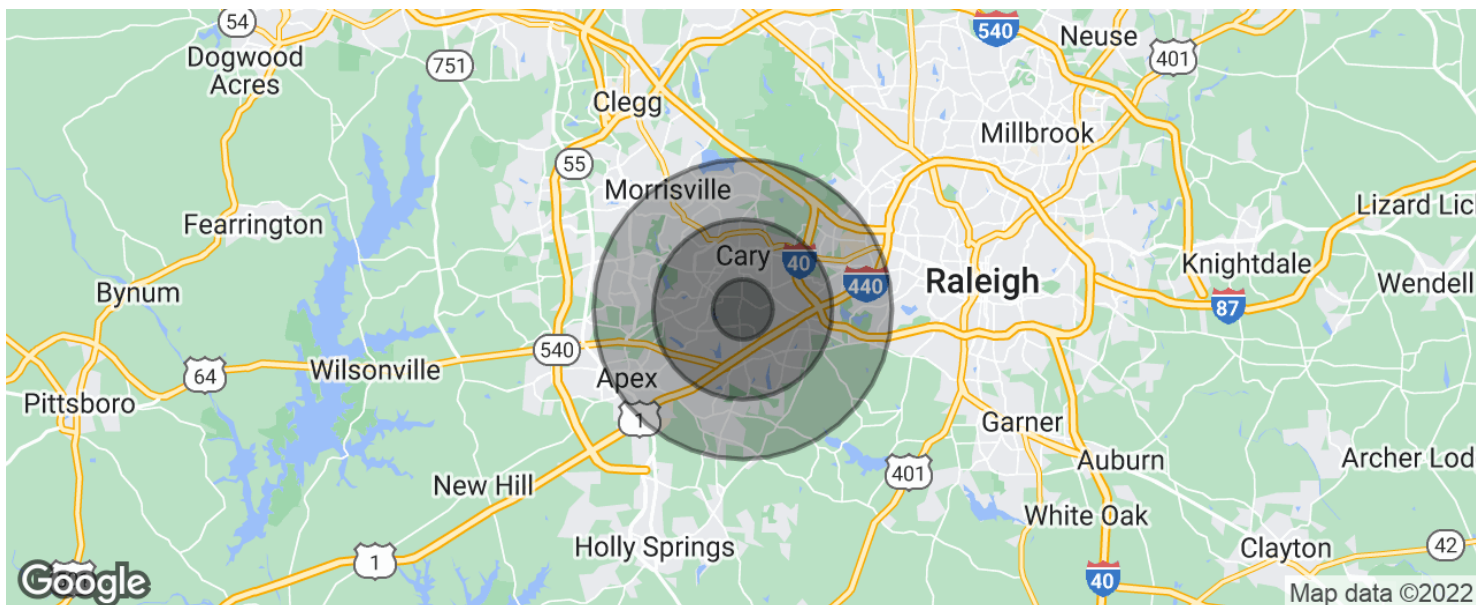
Stone Alexander, CPA
salexander@lee-associates.com
O: 919.591.2275
C: 919.600.2397

O:
C:

All information furnished regarding property for sale, rental or financing is from sources deemed reliable, but no warranty or representation is made to the accuracy thereof and same is submitted to errors, omissions, change of price, rental or other conditions prior to sale, lease or financing or withdrawal without notice.
No liability of any kind is to be imposed on the broker herein.

OFFICE CONDO FOR LEASE 1148 EXECUTIVE CIRCLE, UNIT 3

Cary, NC 27511



POPULATION

	1 MILE	3 MILES	5 MILES
Total population	9,906	76,051	159,378
Median age	40.7	37.5	36.2
Median age (Male)	38.8	36.0	35.5
Median age (Female)	42.2	38.8	36.8

HOUSEHOLDS & INCOME

	1 MILE	3 MILES	5 MILES
Total households	4,329	30,522	62,085
# of persons per HH	2.3	2.5	2.6
Average HH income	\$75,900	\$90,370	\$98,277
Average house value	\$226,339	\$291,222	\$320,278

* Demographic data derived from 2020 ACS - US Census

Moss Withers, SIOR, MBA
mwithers@lee-associates.com
O: 919.576.2501
C: 919.576.2501

Karah Jennings McConnell
kjennings@lee-associates.com
O: 919.576.2502
C: 919.817.0705

Stone Alexander, CPA
salexander@lee-associates.com
O: 919.591.2275
C: 919.600.2397

All information furnished regarding property for sale, rental or financing is from sources deemed reliable, but no warranty or representation is made to the accuracy thereof and same is submitted to errors, omissions, change of price, rental or other conditions prior to sale, lease or financing or withdrawal without notice. No liability of any kind is to be imposed on the broker herein.