



LAND FOR SALE

# NEC FLORENCE & PEART

Casa Grande, AZ 85222

**NEIL BOARD**  
602.778.3781  
nboard@w-retail.com

**BRIAN GAUSDEN**  
602.778.3740  
bgausden@w-retail.com

**WESTERN RETAIL ADVISORS**  
2555 E Camelback Rd, Suite 200  
Phoenix, AZ 85016  
602.778.3747 | w-retail.com

# NEC FLORENCE & PEART

NEC Florence & Peart Casa Grande, AZ 85222



## LOCATION DESCRIPTION

106,286 SF Land Available

## PROPERTY HIGHLIGHTS

- For Sale
- Zoned C-2
- 2.44 Acres Available

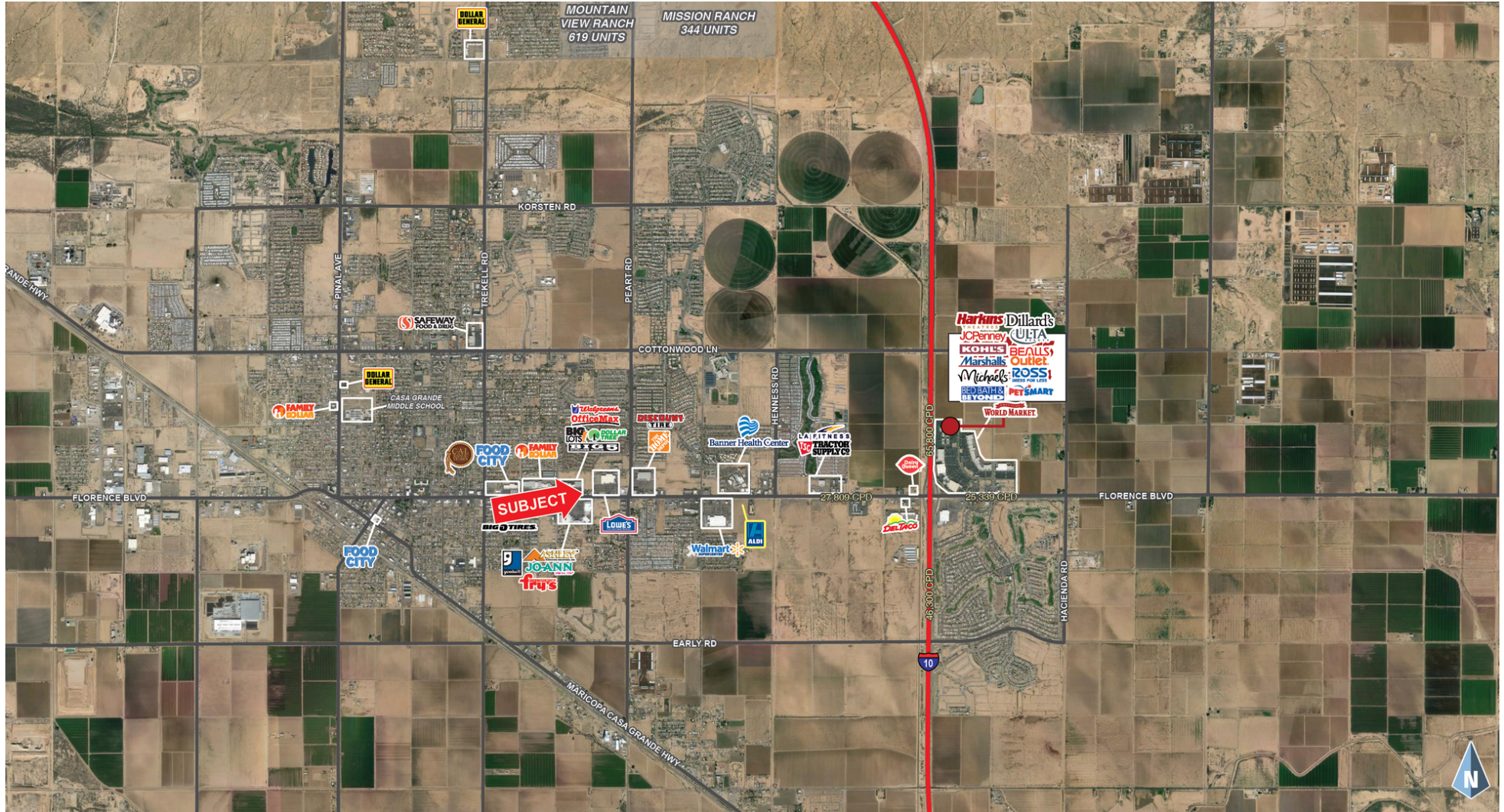
## AREA COTENANTS



The information contained within this brochure has been obtained from sources other than Western Retail Advisors, LLC. Western Retail Advisors have not verified such information and make no guarantee, warranty, or representation about such information. It is your responsibility to independently confirm its accuracy and completeness. Any dimensions, specifications, floor plans, and information may not be accurate and should be verified by you prior to the lease or purchase of the property.

# NEC FLORENCE & PEART

NEC Florence & Peart Casa Grande, AZ 85222



The information contained within this brochure has been obtained from sources other than Western Retail Advisors, LLC. Western Retail Advisors have not verified such information and make no guarantee, warranty, or representation about such information. It is your responsibility to independently confirm its accuracy and completeness. Any dimensions, specifications, floor plans, and information may not be accurate and should be verified by you prior to the lease or purchase of the property.



# NEC FLORENCE & PEART

NEC Florence &amp; Peart Casa Grande, AZ 85222

<b>POPULATION SUMMARY</b>	<b>1 MILE</b>	<b>3 MILES</b>	<b>5 MILES</b>
Total Population	10,270	39,365	53,778
Total Population in 5 years	10,698	42,825	58,938
Annual Growth Rate	0.82%	1.70%	1.85%
Median Age	35.6	37.6	37.8
<b>INCOME SUMMARY</b>			
Median Household Income	\$43,918	\$45,555	\$50,026
Average Household Income	\$60,462	\$59,196	\$62,515
<b>BUSINESS SUMMARY</b>			
Total Businesses	377	1,262	1,445
Total Employees	3,646	15,330	17,783
Daytime Population	9,886	39,009	50,018
<b>POPULATION 25+ by EDUCATIONAL ATTAINMENT</b>			
Associate's Degree	9.7%	9.8%	10.0%
Bachelor's Degree	11.0%	10.0%	11.1%
Graduate / Professional Degree	4.7%	5.7%	6.1%
Percent of Population with Degrees	25.4%	25.5%	27.2%
<b>EMPLOYED POPULATION 16+ by OCCUPATION</b>			
Total	4,030	15,687	21,541
White Collar	53.1%	49.0%	48.4%
Service Industry	24.6%	25.3%	24.8%
Blue Collar	22.3%	25.7%	26.8%
<b>HOUSEHOLD SUMMARY</b>			
Households	3,762	14,522	19,663
Average Household Size	2.71	2.69	2.72
Average Family Size	3.26	3.22	3.21
Median Home Value	\$154,904	\$144,493	\$156,485

\* 2020 Demographic data derived from ESRI

The information contained within this brochure has been obtained from sources other than Western Retail Advisors, LLC. Western Retail Advisors have not verified such information and make no guarantee, warranty, or representation about such information. It is your responsibility to independently confirm its accuracy and completeness. Any dimensions, specifications, floor plans, and information may not be accurate and should be verified by you prior to the lease or purchase of the property.