

# LAND FOR SALE 0 SOUTH MAIN STREET

Rolesville, NC 27571



COMMERCIAL REAL ESTATE SERVICES  
RALEIGH DURHAM



## PROPERTY HIGHLIGHTS

- Property to be sold with zoning in place
- Spine Road will form new entrance to existing 700+ home neighborhood with  $\pm$ \$400K price points
- Commercial components will begin development in 2019 and serve as amenity to the residential
- Allowable densities: 6/acre single family, 10/acre townhome, 16/acre multifamily

## LOCATION DESCRIPTION

Multifamily land located within the new 70 acre mixed use project in the heart of Rolesville.

## OFFERING SUMMARY

Sale Price:	Call for pricing
Lot Size:	33.1 Acres

Moss Withers, SIOR, MBA  
mwithers@lee-associates.com  
O: 919.576.2501  
C: 919.576.2501

Karah Jennings McConnell  
kjennings@lee-associates.com  
O: 919.576.2502  
C: 919.817.0705

All information furnished regarding property for sale, rental or financing is from sources deemed reliable, but no warranty or representation is made to the accuracy thereof and same is submitted to errors, omissions, change of price, rental or other conditions prior to sale, lease or financing or withdrawal without notice.  
No liability of any kind is to be imposed on the broker herein.



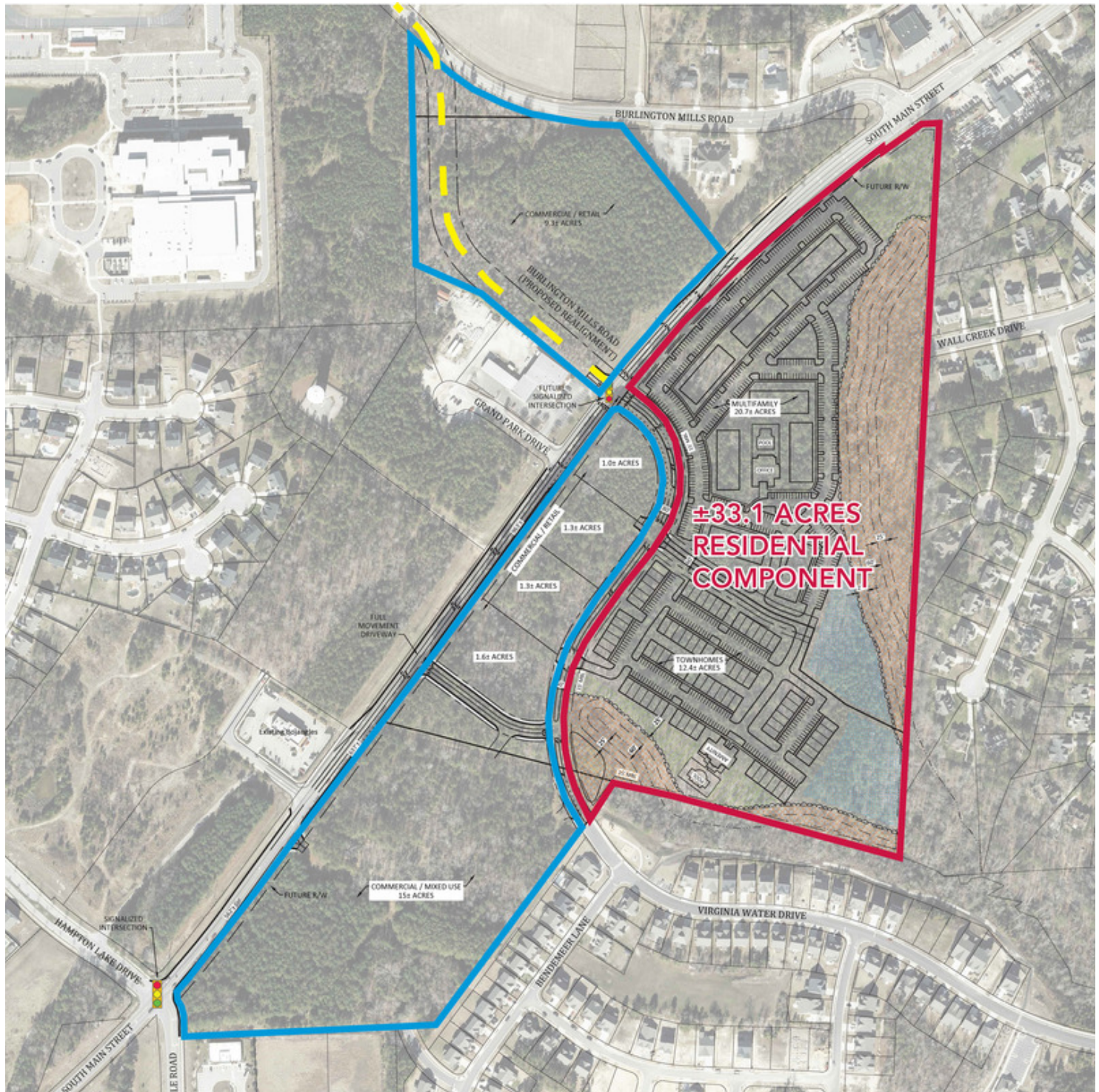
# LAND FOR SALE 0 SOUTH MAIN STREET

Rolesville, NC 27571



LEE &  
ASSOCIATES

COMMERCIAL REAL ESTATE SERVICES  
RALEIGH DURHAM



Moss Withers, SIOR, MBA  
mwithers@lee-associates.com  
O: 919.576.2501  
C: 919.576.2501

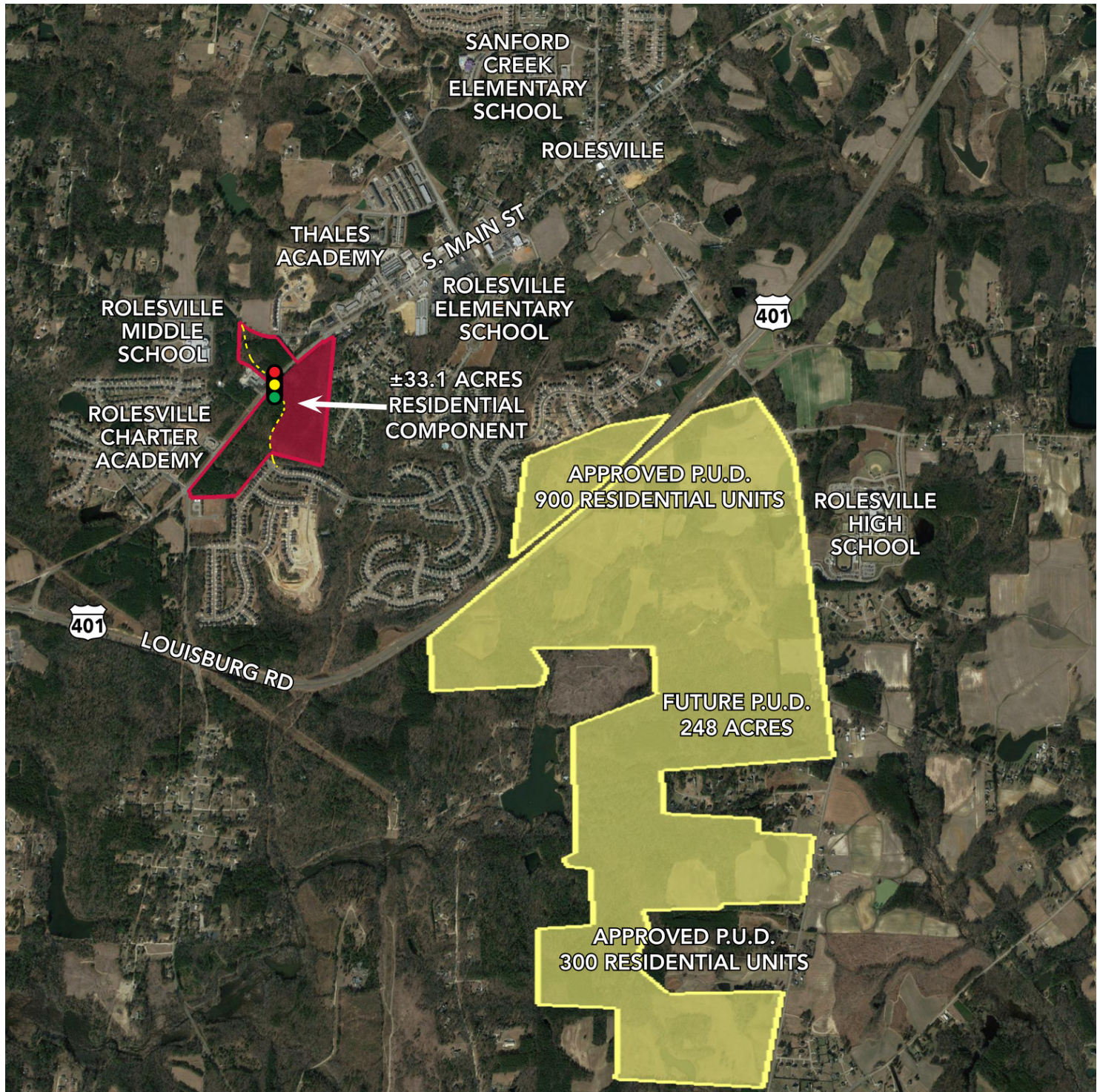
Karah Jennings McConnell  
kjennings@lee-associates.com  
O: 919.576.2502  
C: 919.817.0705

All information furnished regarding property for sale, rental or financing is from sources deemed reliable, but no warranty or representation is made to the accuracy thereof and same is submitted to errors, omissions, change of price, rental or other conditions prior to sale, lease or financing or withdrawal without notice.  
No liability of any kind is to be imposed on the broker herein.



# LAND FOR SALE 0 SOUTH MAIN STREET

Rolesville, NC 27571



Moss Withers, SIOR, MBA  
mwithers@lee-associates.com  
O: 919.576.2501  
C: 919.576.2501

Karah Jennings McConnell  
kjennings@lee-associates.com  
O: 919.576.2502  
C: 919.817.0705

All information furnished regarding property for sale, rental or financing is from sources deemed reliable, but no warranty or representation is made to the accuracy thereof and same is submitted to errors, omissions, change of price, rental or other conditions prior to sale, lease or financing or withdrawal without notice.  
No liability of any kind is to be imposed on the broker herein.