

8330 Harry Hines  
Dallas, Texas 75235

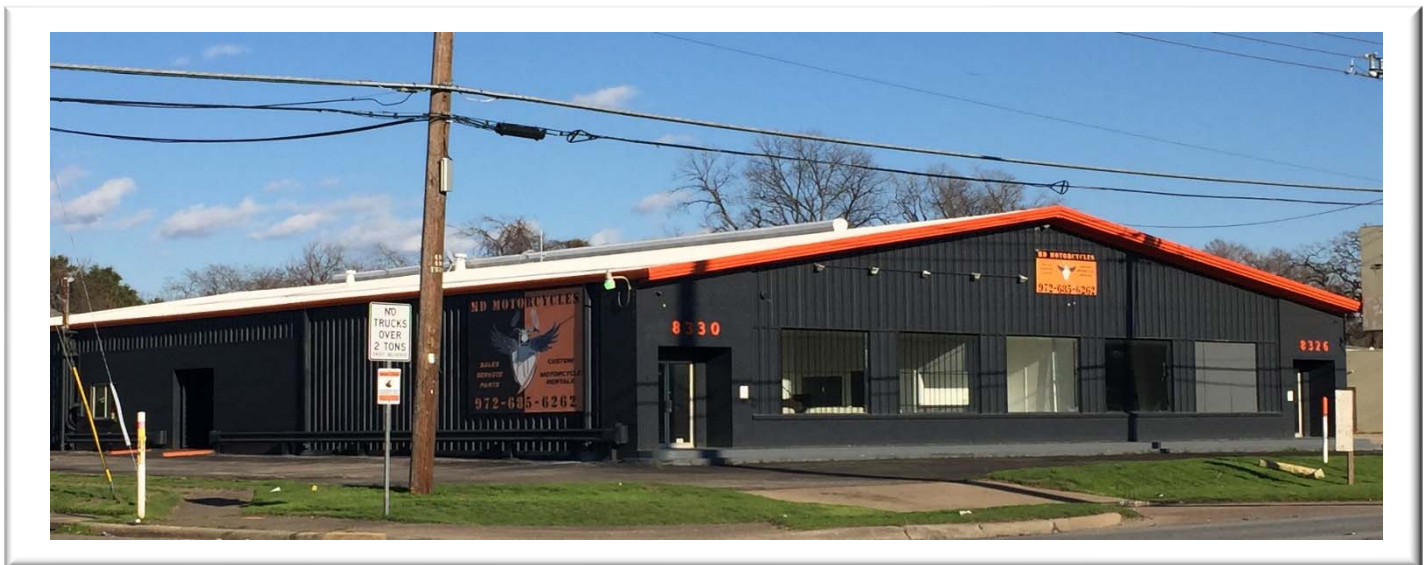
For information, please contact:

Bob Buell  
972.503.5100  
bob.buell@fults.com

FOR LEASE

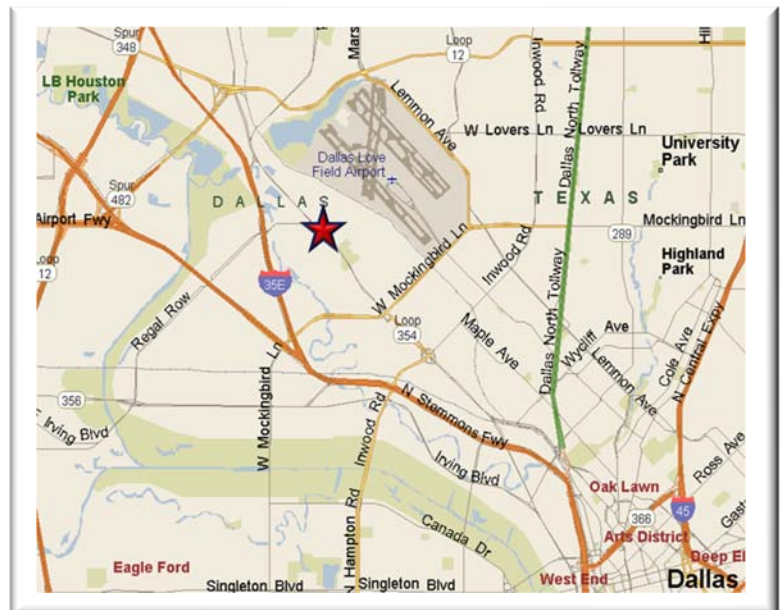
FULTS

9,490 Rentable Square Feet Available



### HIGHLIGHTS

- Expandable to 13,080 RSF
- Freestanding Building with Great Visibility and Frontage
- Dedicated Pole Signs
- Zoned CS (Community Service)
- Abundant Parking
- Close Proximity to Love Field Airport and the Design & Hospital Districts
- Numerous Restaurants, Retail, Hospitality Within Close Proximity

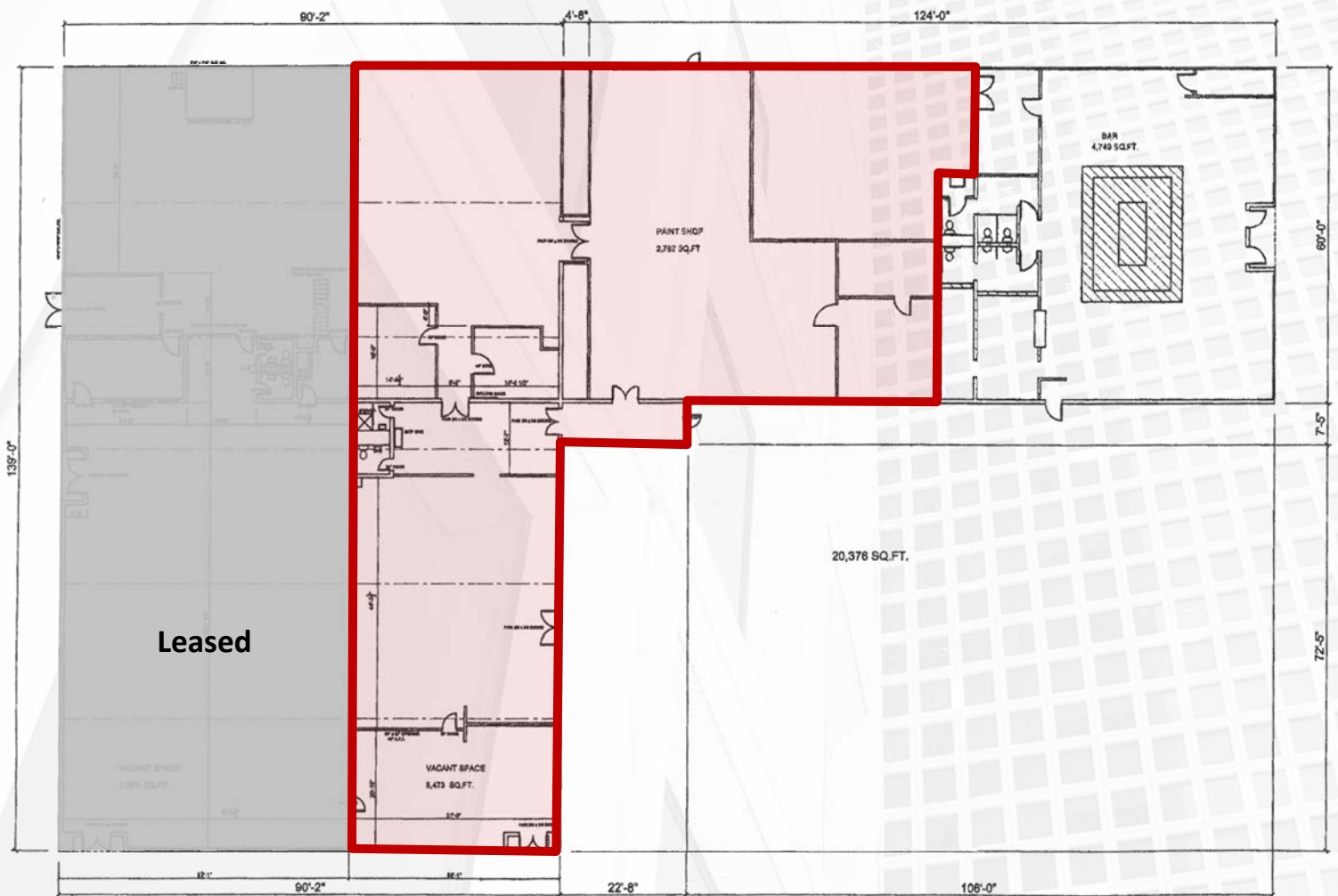


8330 Harry Hines  
Dallas, Texas 75235

For information, please contact:

Bob Buell  
972.503.5100  
bob.buell@fults.com

**Up To 9,490 RSF Available**



8330 Harry Hines  
Dallas, Texas 75235

For information, please contact:

Bob Buell  
972.503.5100  
bob.buell@fults.com

**9,490 Rentable Square Feet Available  
Expandable to 13,080 RSF**



Fults Commercial Real Estate | 12222 Merit Drive, Suite 150, Dallas, Texas 75251 | 972.503.5100 | fults.com

No warranty or representation, express or implied, is made as to the accuracy of the information contained herein, and same is submitted subject to errors omissions, change of price, rental or other conditions, withdrawal without notice, and to any specific listing conditions, imposed by our principals.