

CONVERGENCE - BLDG 1

*2501 S. STATE HIGHWAY 121 BUSINESS
LEWISVILLE, TEXAS 75067*



DIGITAL REALTY

163,739 RSF
AVAILABLE FOR LEASE

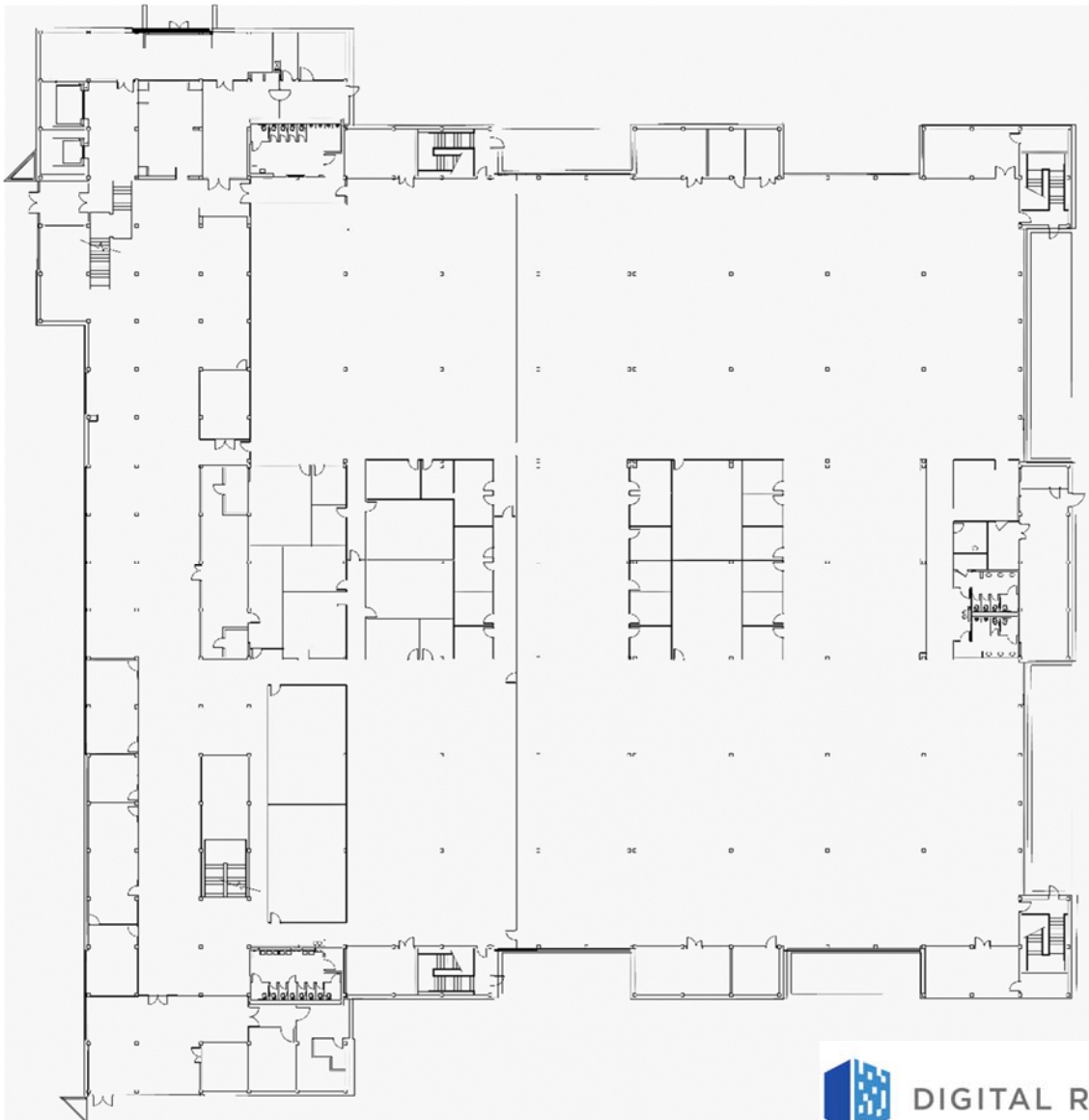




CONVERGENCE – BLDG 1

2501 S. STATE HIGHWAY 121 BUSINESS
LEWISVILLE, TEXAS 75067

1ST FLOOR – 83,467 RSF



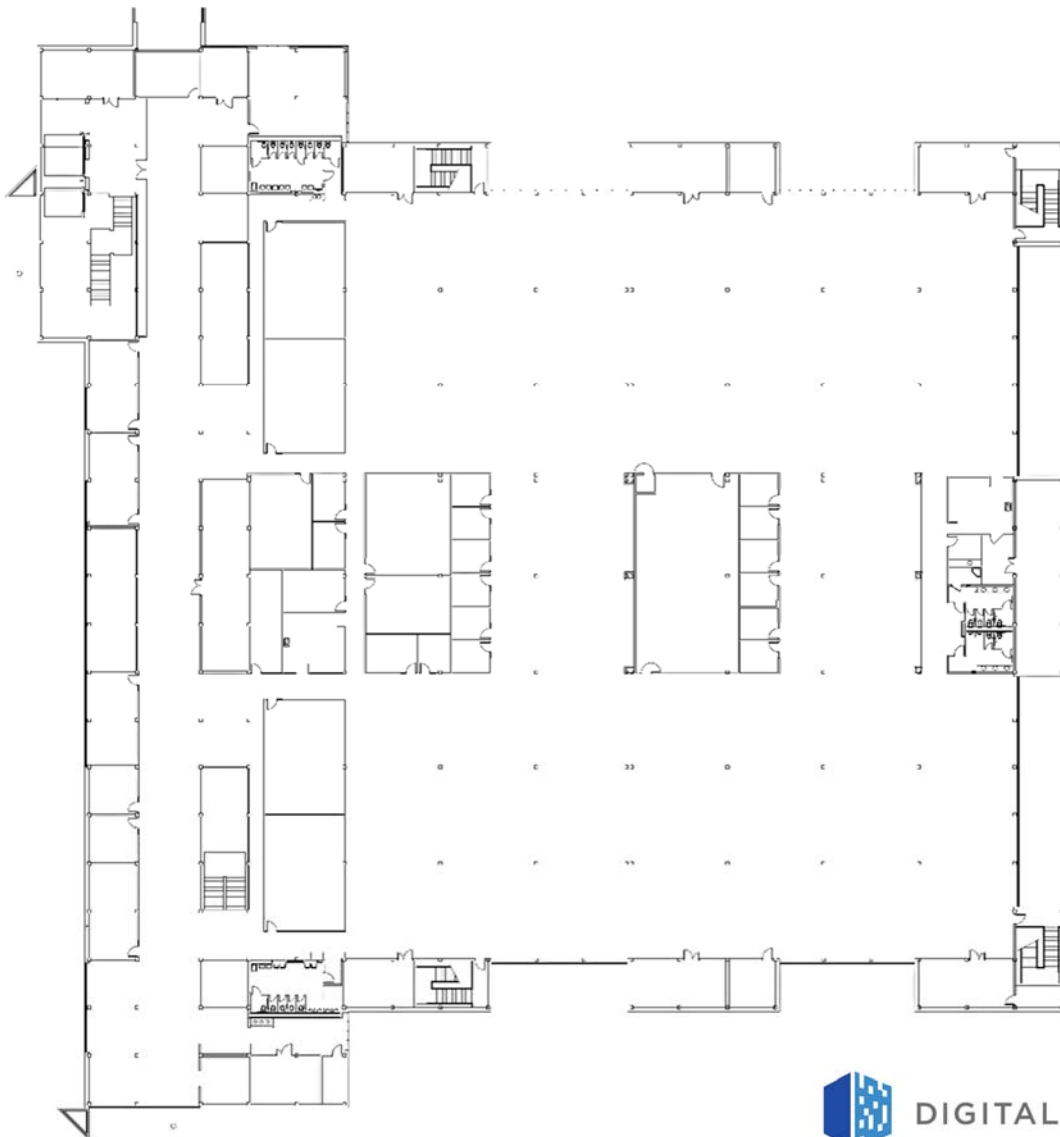
DIGITAL REALTY



CONVERGENCE – BLDG 1

*2501 S. STATE HIGHWAY 121 BUSINESS
LEWISVILLE, TEXAS 75067*

2ND FLOOR – 80,272 RSF



DIGITAL REALTY



CONVERGENCE – BLDG 1

*2501 S. STATE HIGHWAY 121 BUSINESS
LEWISVILLE, TEXAS 75067*

INTERIOR PHOTOS



DIGITAL REALTY

FOR LEASING INFORMATION

Bob Buell

bob.buell@fults.com

Louie Weber

louis.weber@fults.com

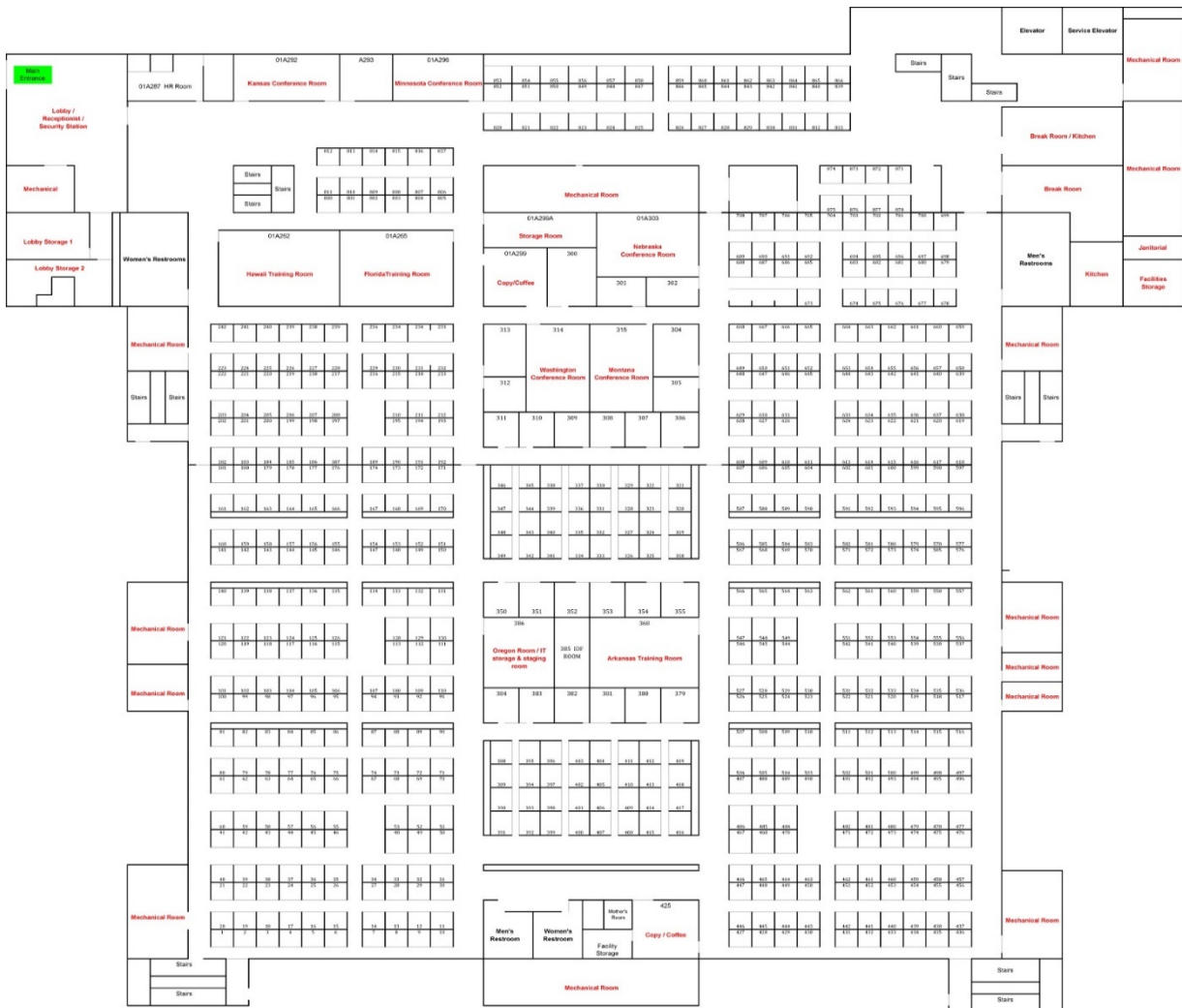
FULTS
fults.com | 972.503.5100



CONVERGENCE – BLDG 1

2501 S. STATE HIGHWAY 121 BUSINESS
LEWISVILLE, TEXAS 75067

1ST FLOOR – 83,467 RSF - FURNITURE

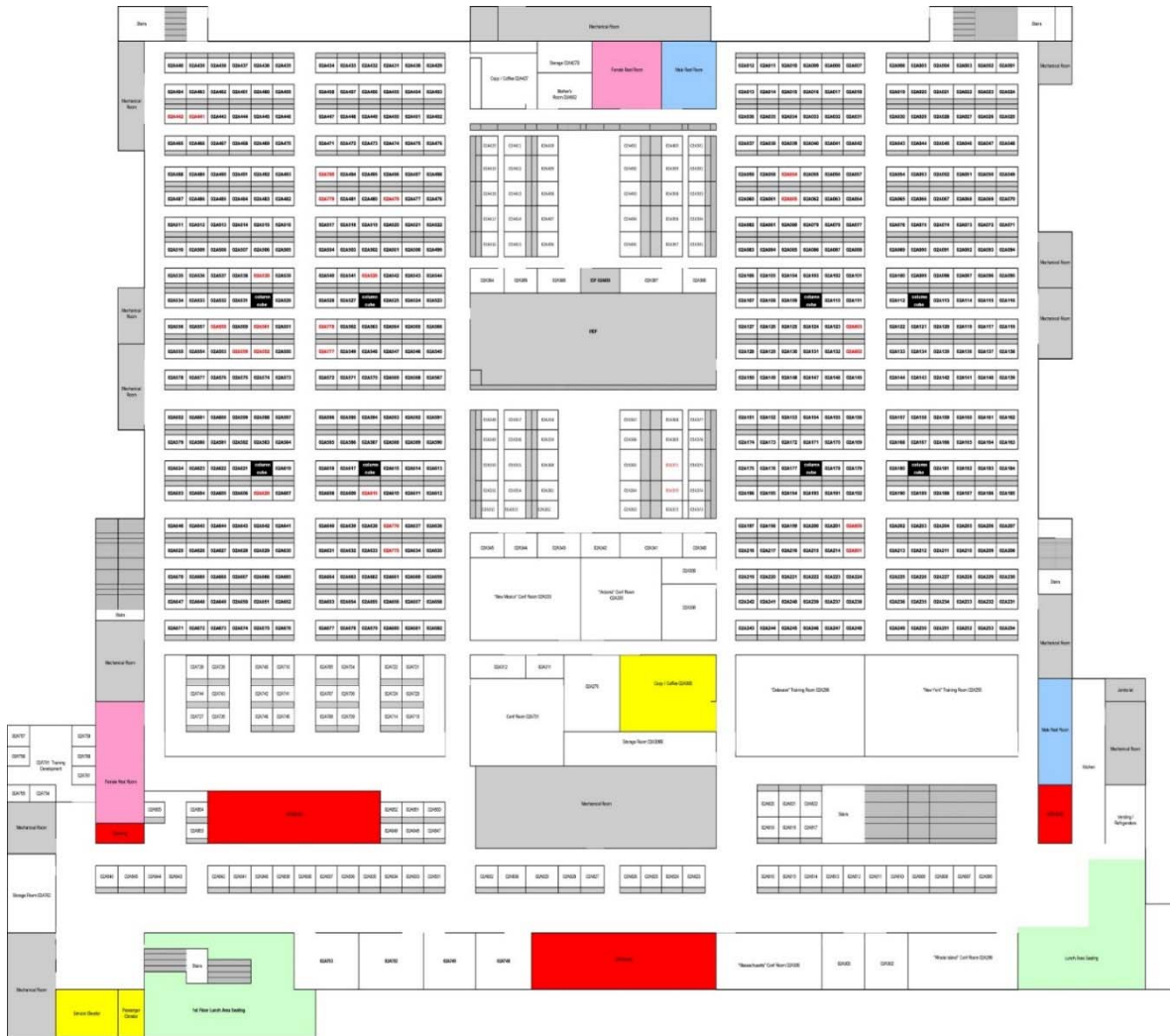




CONVERGENCE – BLDG 1

2501 S. STATE HIGHWAY 121 BUSINESS
LEWISVILLE, TEXAS 75067

2ND FLOOR – 80,272 RSF - FURNITURE



DIGITAL REALTY