

Retail/Office Space For Lease



RETAIL/OFFICE SPACE ON WEBER

16133 S. WEBER RD, CREST HILL, IL 60403

RETAIL/OFFICE SPACE ON WEBER



OFFERING SUMMARY

Available SF: 3,000 SF

Lease Rate: \$16.00 SF/yr (NNN)

Pass-Thrus: \$6.50/SF

Building Size: 24,740 SF

Zoning: B-3

PROPERTY HIGHLIGHTS

- Well maintained 3,000 SF office space
- Excellent visibility on Weber Rd.
- Virtual Tour: <https://my.matterport.com/show/?m=q1F8TUxpZw1&>

LOCATION OVERVIEW

The property is located 1/4 mile south of the intersection of Weber Rd & Renwick Rd in Crest Hill, at the nexus of Romeoville, Lockport, Plainfield, Joliet, & Crest Hill on Weber Rd. 4.4 miles south of the intersection of I-55 & Weber Rd. The property is 1 mile east of Mistwood Golf Course and 2 miles west of Lewis University, and 1 mile south of the retail intersection of Airport & Weber Rd.

DEMOGRAPHICS

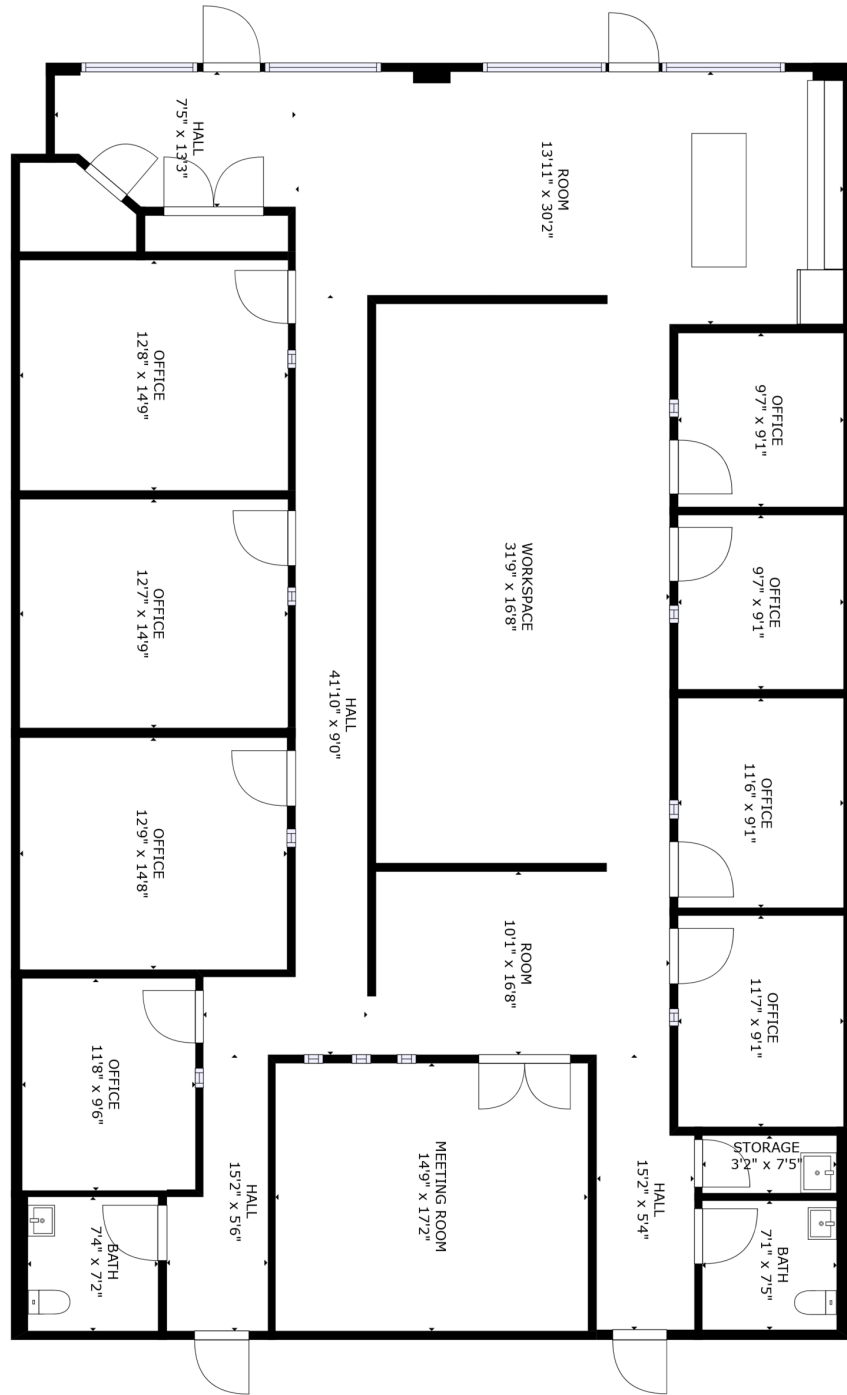
	0.25 MILES	0.5 MILES	1 MILE
Total Households	274	920	2,777
Total Population	601	1,997	5,573
Average HH Income	\$73,693	\$73,209	\$68,521

RETAIL/OFFICE SPACE ON WEBER



RETAIL/OFFICE SPACE ON WEBER

FLOOR 1



GROSS INTERNAL AREA
FLOOR 1: 3121 sq. ft.
TOTAL: 3121 sq. ft.
SIZES AND DIMENSIONS ARE APPROXIMATE, ACTUAL MAY VARY.



RETAIL/OFFICE SPACE ON WEBER

