


The Colliers logo consists of the word "Colliers" in a white serif font, centered within a dark blue rectangular box. Below the box are three horizontal stripes: a yellow stripe on top, a red stripe in the middle, and a blue stripe on the bottom.

Accelerating success.

A photograph of a large, modern, multi-story office building with a grid-like facade of windows and concrete panels. The number "900" is visible on the upper part of the building. In front of the building, there are two flagpoles: one with the American flag and another with a white flag featuring a red and green design. The foreground shows a well-maintained green lawn with some trees and shrubs, and a paved road with yellow double lines.

Great Location with Easy Access!  
Spaces From 2,300 - 11,700 SF  
Available For Lease

**Brent Jacob**

Senior Vice President  
+1 847 698 8215  
brent.jacob@colliers.com

**David Florent**

Principal  
+1 847 698 8258  
david.florent@colliers.com

# Property Profile

900 Commerce Drive offers the ultimate work + play environment! Located adjacent to the Oak Brook Mall, which offers excellent retail and dining options so there's no need to fall into a routine! Step outside your door and enjoy all the excitement Oak Brook has to offer!

**900 COMMERCE IS THE PERFECT LOCATION FOR ANY TENANT!**

## Building Features:

- Renovated Building Lobby & Corridors
- WiFi Cafe
- Signage Opportunity
- On-Site Property Manager & Engineer
- Great Natural Light
- Covered Parking
- Parking Ratio of 4:1,000 SF

## Great Location with Easy Access!

- Close proximity to major tollways
- Adjacent to Oak Brook Mall & surrounding amenities
- 18 miles to Downtown Chicago
- 14 miles to O'Hare International Airport
- 20 miles to Midway Airport



# Area Map

900 Commerce Drive benefits from the unparalleled access to and from surrounding restaurants, retail and hotels via I-88, I-294, and I-290. The property is located adjacent to the Oak Brook Mall which offers plenty of retail and dining options.

Downtown Chicago  
18 Miles

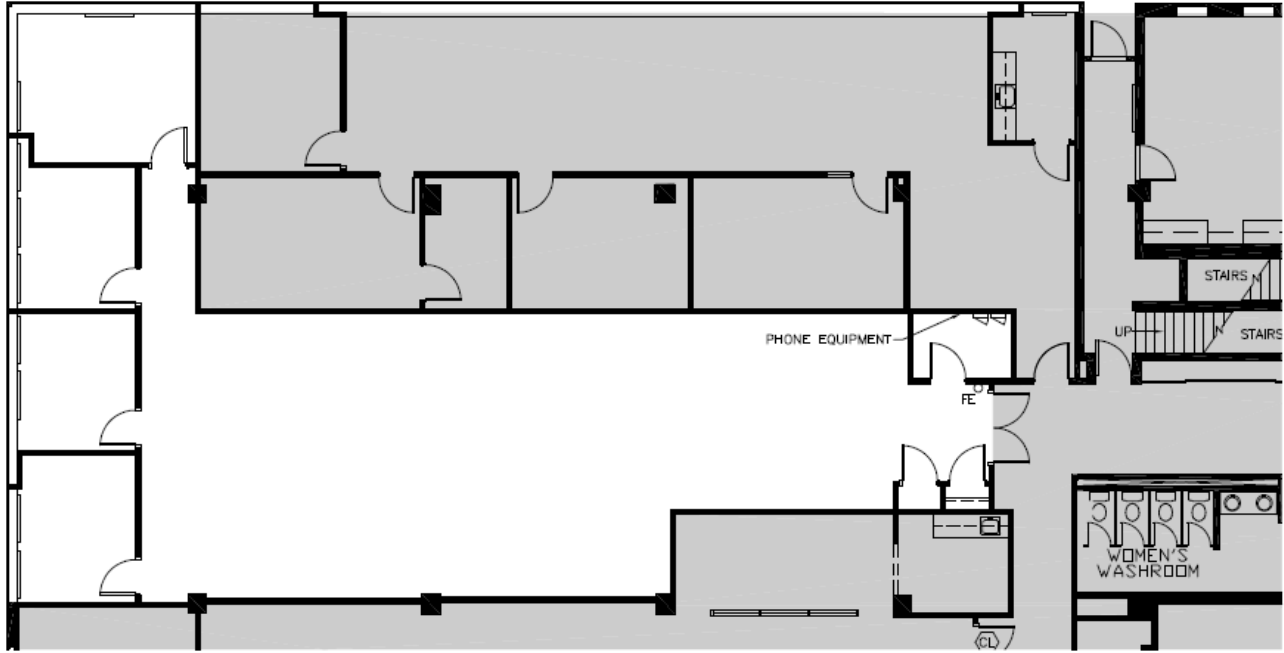
O'Hare Airport  
14 Miles

Midway Airport  
20 Miles



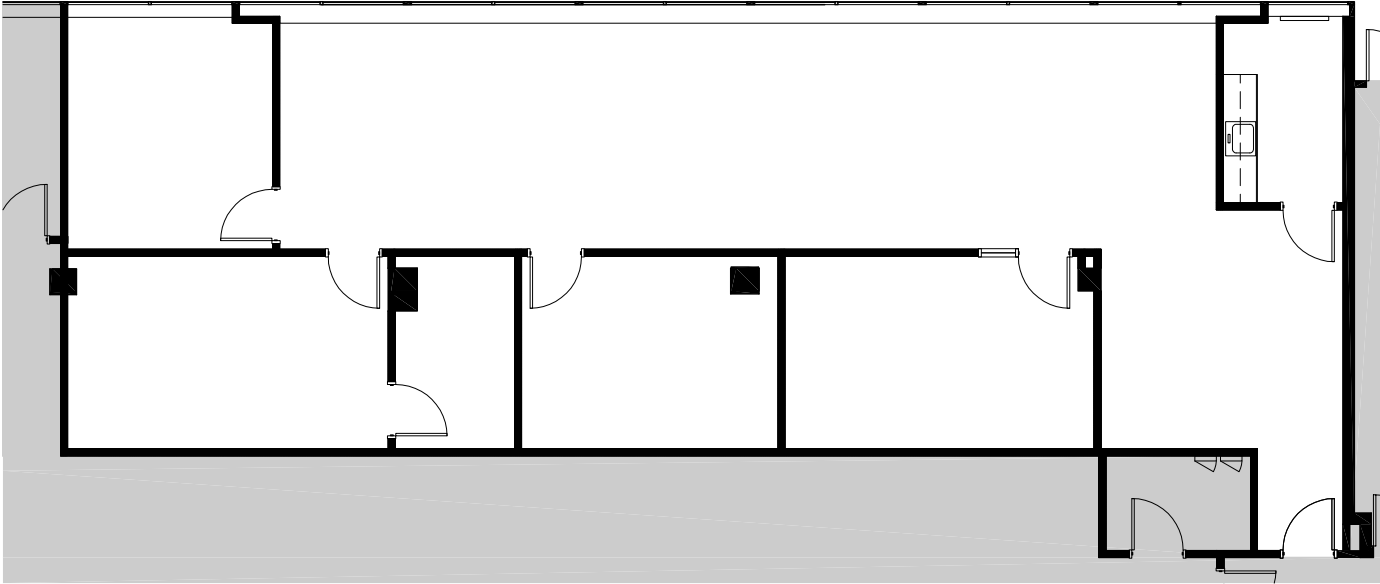
# Floor Plans

Suite 100 | 2,647 SF



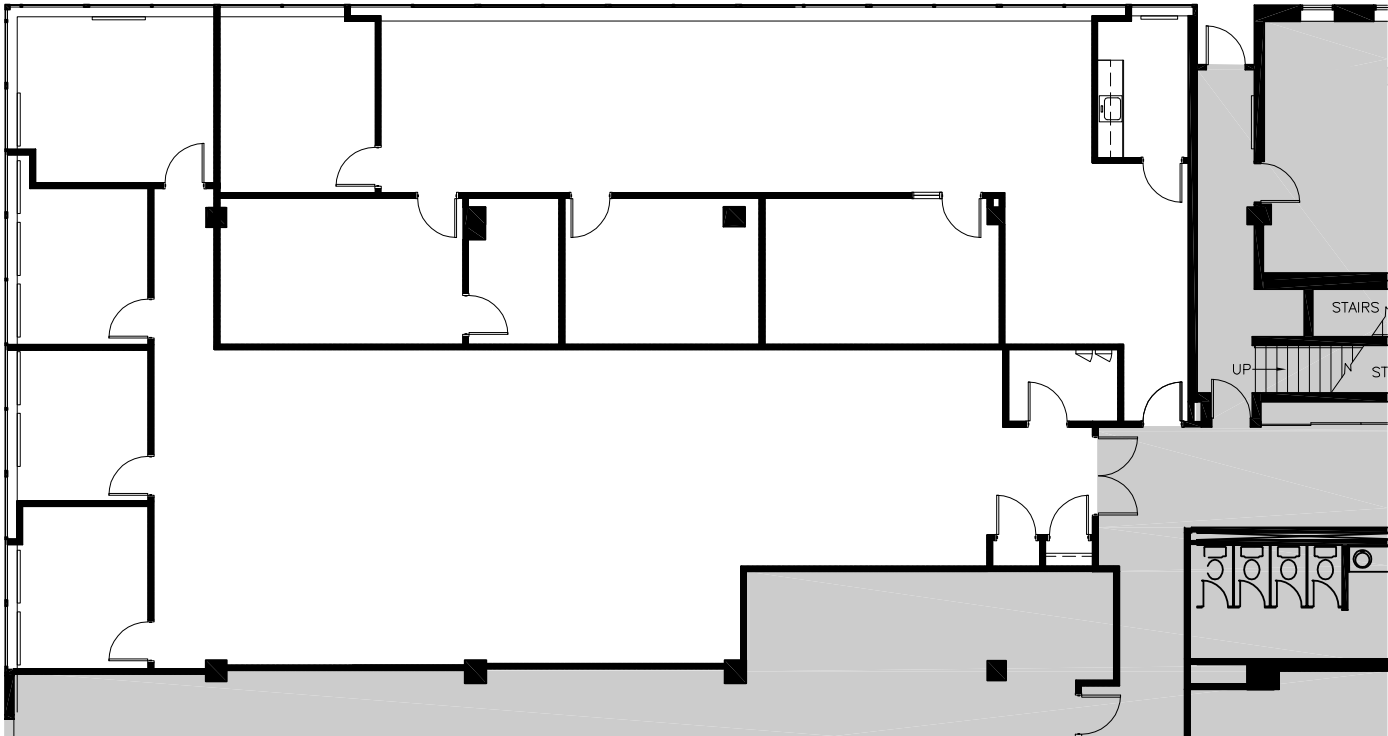
# Floor Plans

Suite 105 | 2,397 SF



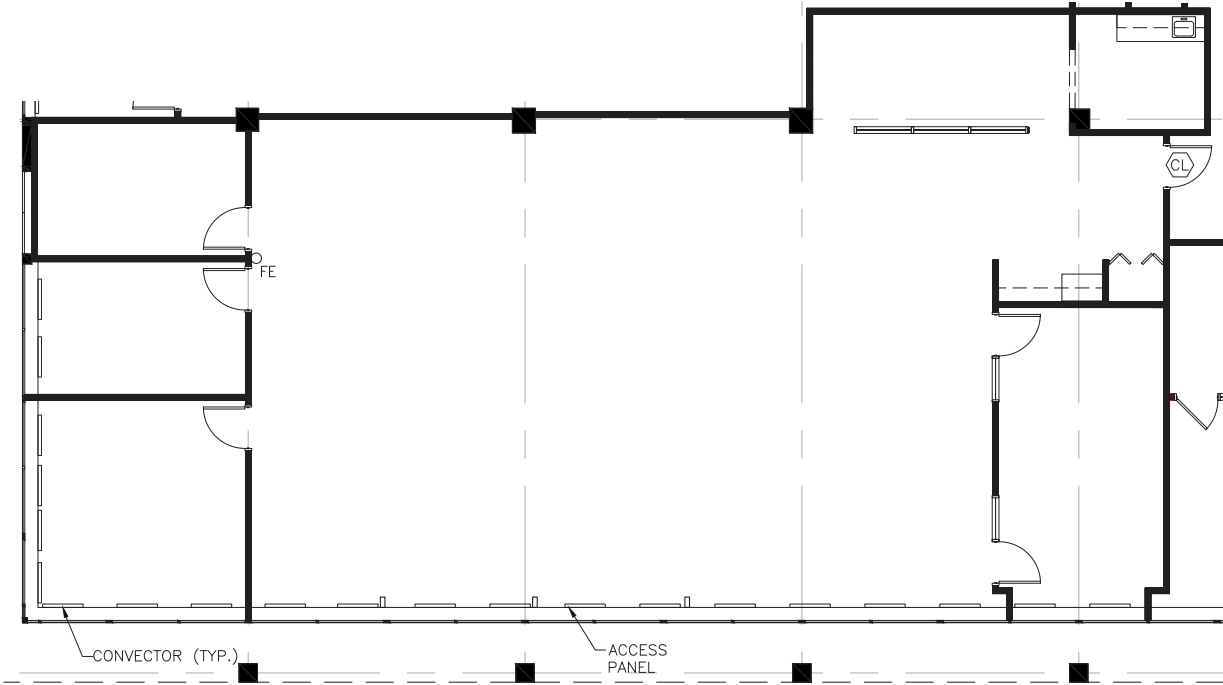
# Floor Plans

Suite 100/105 | 5,044 SF



# Floor Plans

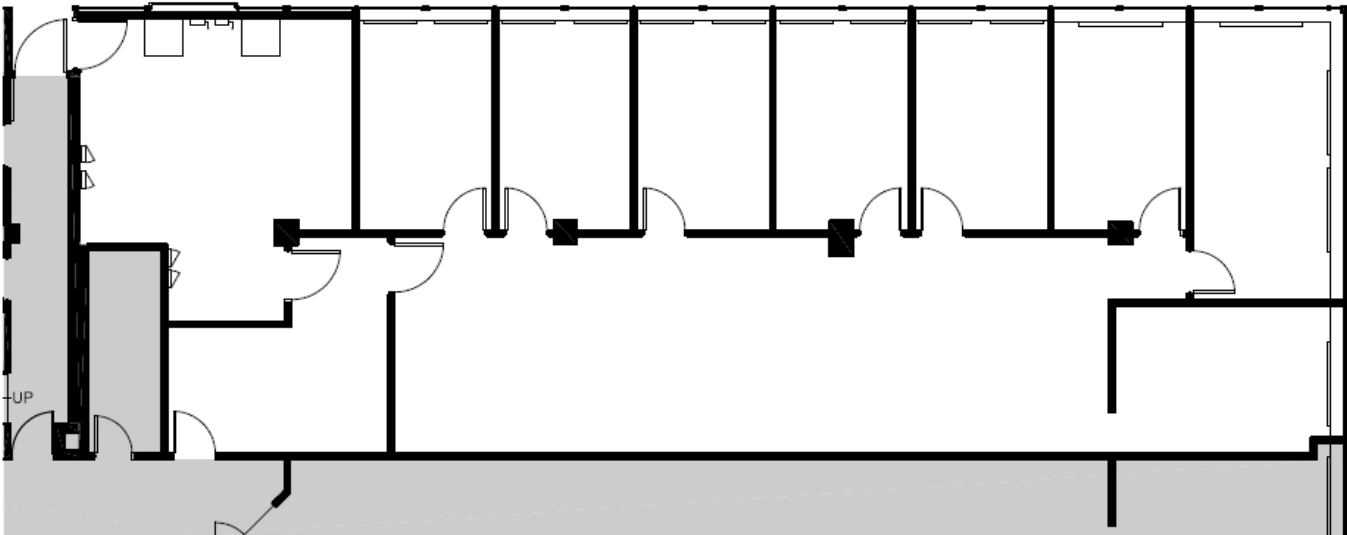
## Suite 110 | 3,718 RSF



# Floor Plans

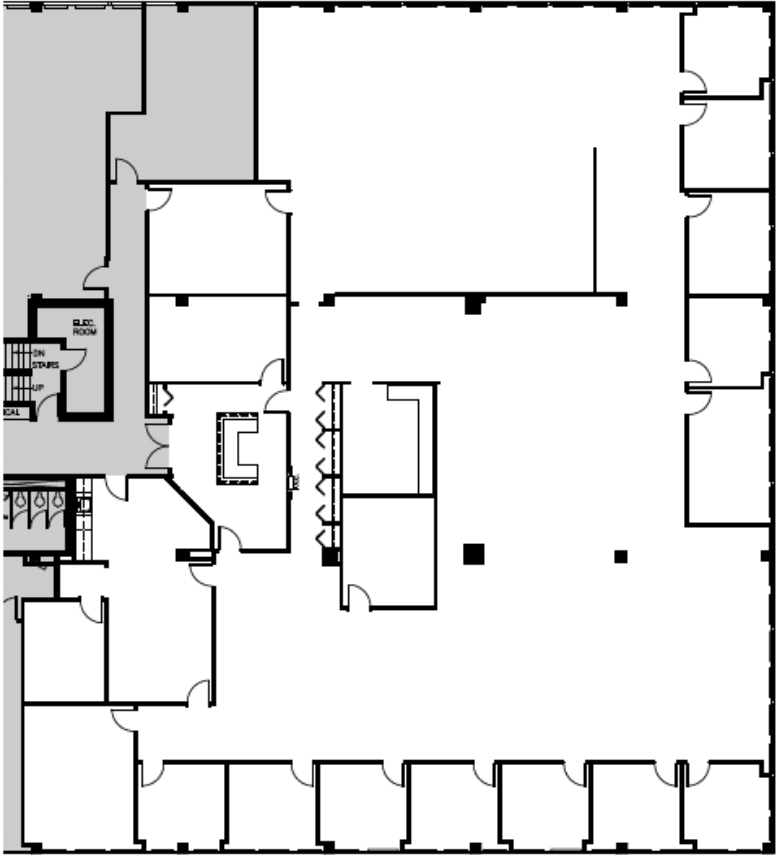


Suite 130 | 3,270 SF



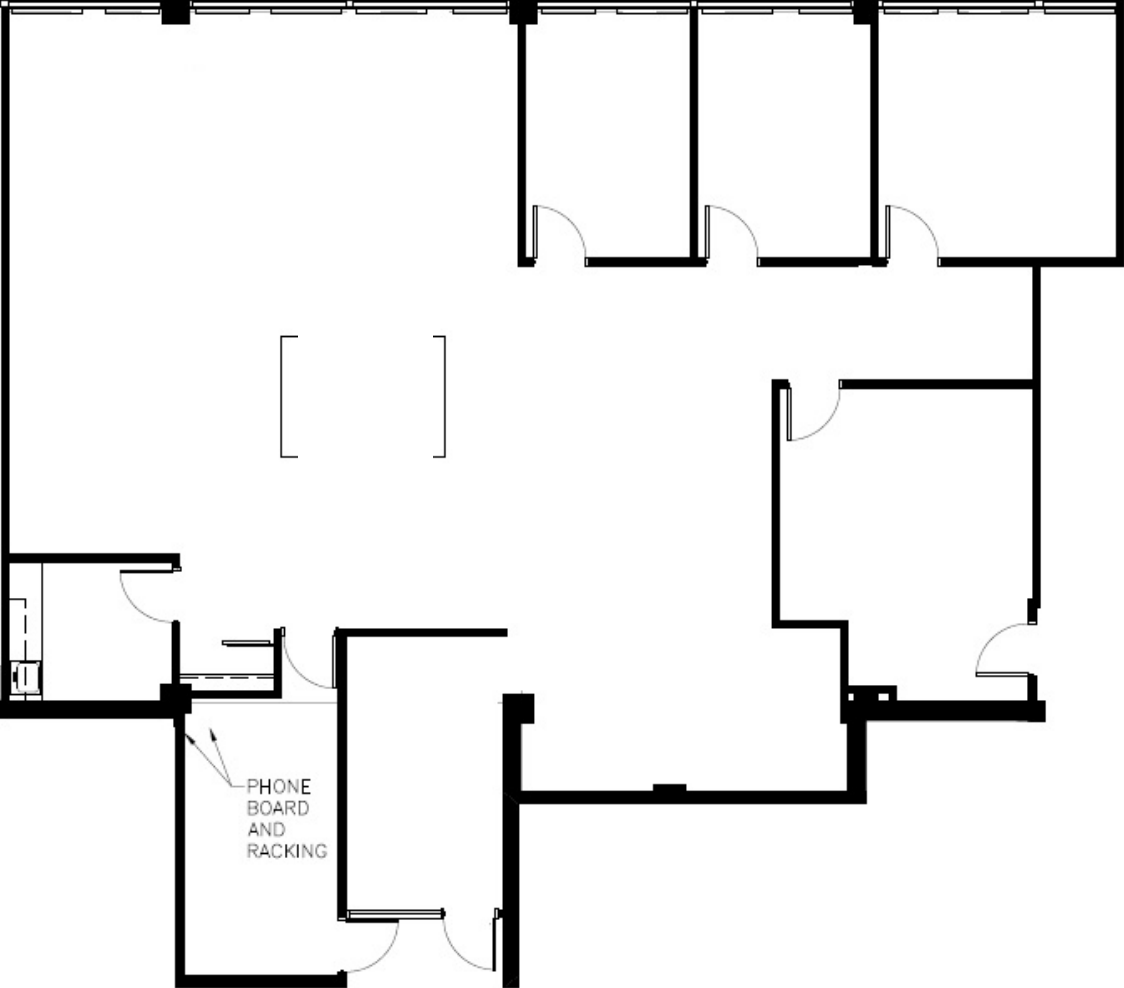
# Floor Plans

Suite 200 | 11,797 SF



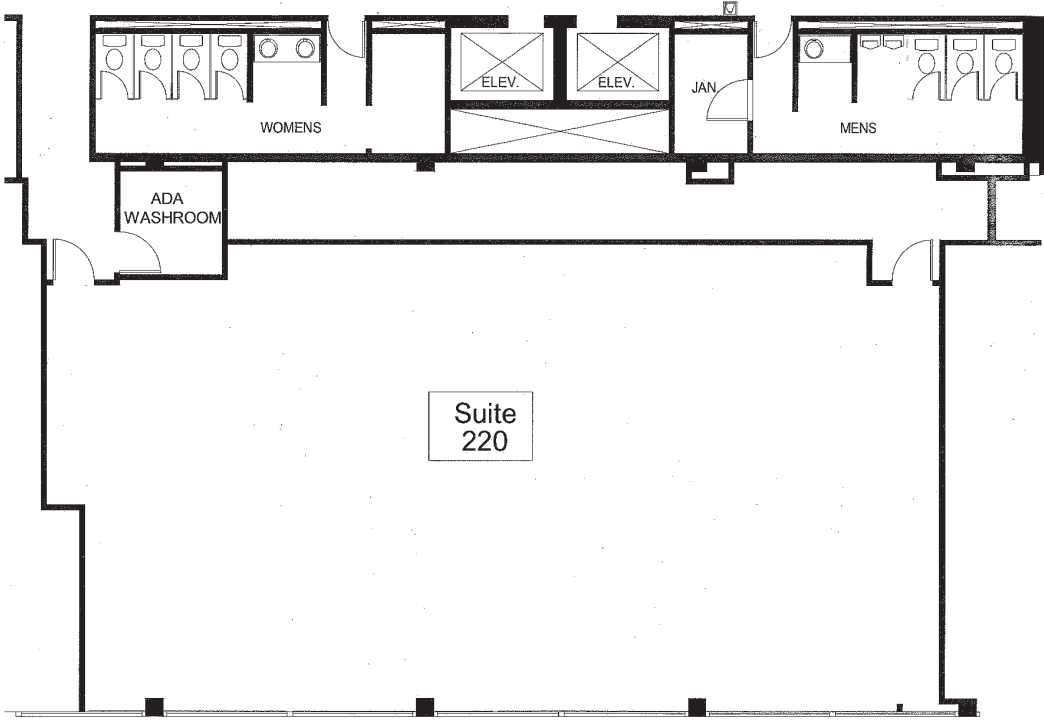
# Floor Plans

Suite 201 | 3,282 SF



# Floor Plans

## Suite 220 | 3,065 SF



The Colliers logo consists of the word "Colliers" in a white serif font, centered within a white rounded rectangle. Below the rectangle are three horizontal stripes in red, yellow, and blue from top to bottom.

6250 River Rd. Suite 11-100  
Rosemont, IL 60018  
P: +1 847 698 8444  
[colliers.com/chicago](http://colliers.com/chicago)

**Brent Jacob**

Senior Vice President  
+1 847 698 8215  
[brent.jacob@colliers.com](mailto:brent.jacob@colliers.com)

**David Florent**

Principal  
+1 847 698 8258  
[david.florent@colliers.com](mailto:david.florent@colliers.com)

This document has been prepared by Colliers International for advertising and general information only. Colliers International makes no guarantees, representations or warranties of any kind, expressed or implied, regarding the information including, but not limited to, warranties of content, accuracy and reliability. Any interested party should undertake their own inquiries as to the accuracy of the information. Colliers International excludes unequivocally all inferred or implied terms, conditions and warranties arising out of this document and excludes all liability for loss and damages arising there from. This publication is the copyrighted property of Colliers International and/or its licensor(s). ©2022. All rights reserved.