

550  **650**
WARRENVILLE



Contact us:

Dave Florent

Principal

+1 847 698 8258

david.florent@colliers.com

Brent Jacob

Senior Vice President

+1 847 698 8215

brent.jacob@colliers.com

FOR LEASE

550-650 Warrenville Road | Lisle, IL

Office space with excellent
accessibility and amenities!

Colliers International
6250 N. River Rd | Suite 11-100
Rosemont, IL 60018
P: +1 847 698 8444
colliers.com



Accelerating success.



LOCATION

Conveniently situated along Warrenville Road with easy access to I-88 and I-355, this office space located in the master planned Corporetum Office Campus is just waiting for you to move in.

Morton Arboretum views right from your office windows!



Class A
Building



Flexible
Large Floorplans



Enclosed
Truck Dock



Renovated
Fitness Center



Expandable
Parking



Fiber Optics
Service Available



Conferencing
Facility



On-Site
Dining & Catering



Hwy. Access
I-88 & I-355

THE BUILDING

Constructed in 1987 as part of the master planned Corporetum Office Campus, the property features Class A amenities including a conference center, fitness center, on site cafe and outdoor tenant balconies while boasting exceptional visibility and accessibility.

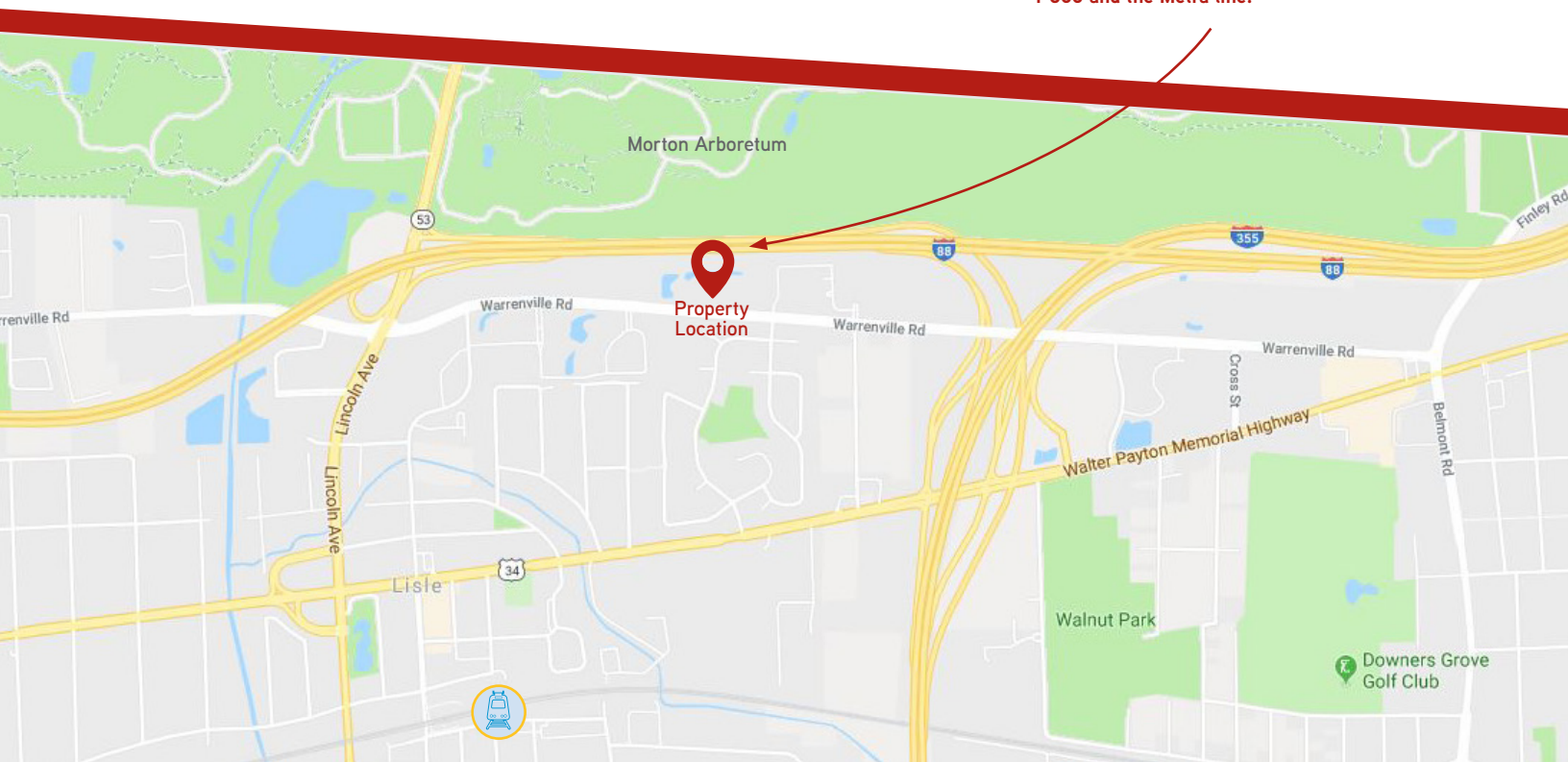
THE AREA

Offering an abundance of retail and hospitality options within minutes of the property you will find an array of dining, shopping and service opportunities to take advantage of year round.

THE REGION

Corporetum Office Campus VI, is one of the most accessible office locations in Chicago's western suburbs. With convenient access to I-88 and I-355, located just 25 miles from downtown Chicago, and within 25 miles of both O'Hare and Midway Airports.

The building is located directly on Warrenville Road and just minutes to I-88, I-355 and the Metra line.



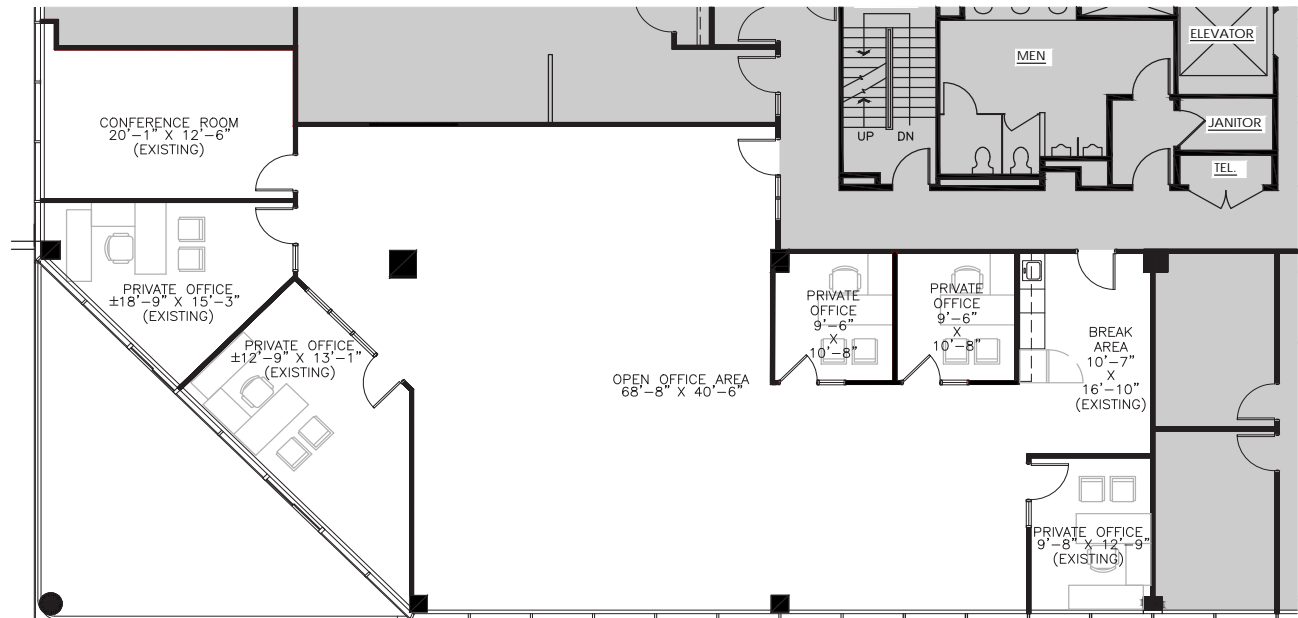


550  650
WARRENVILLE

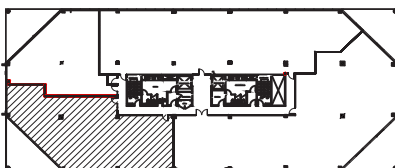


Available Space

Net Rent	\$13.50 Net/SF
Available	Available Immediately
Suite 301	3,549 RSF



KEY PLAN:

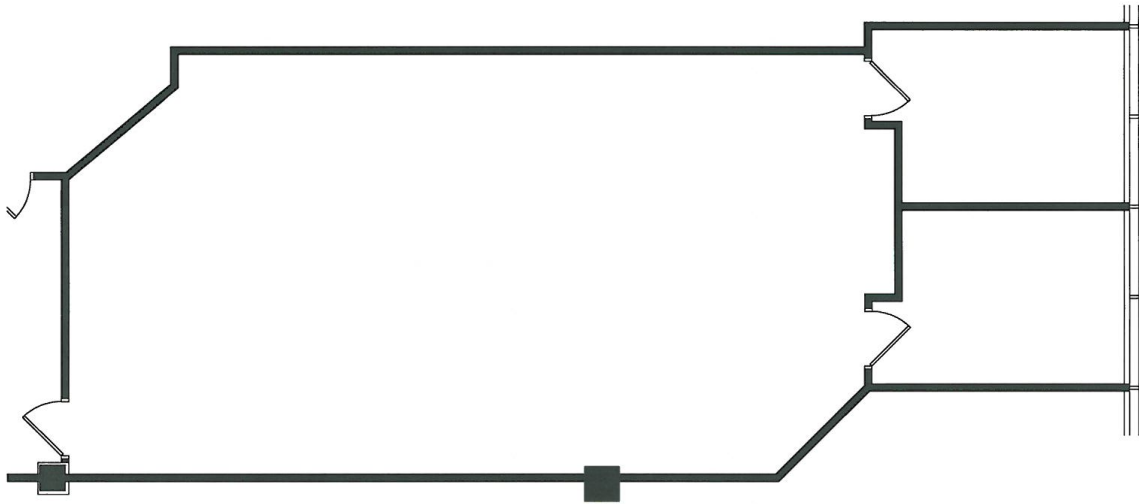


FOR LEASE | 550-650 Warrenville Road, Lisle | IL

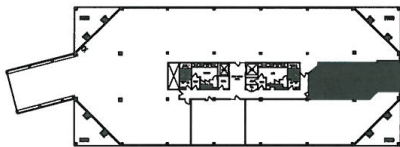
550  **650**
WARRENVILLE

Available Space

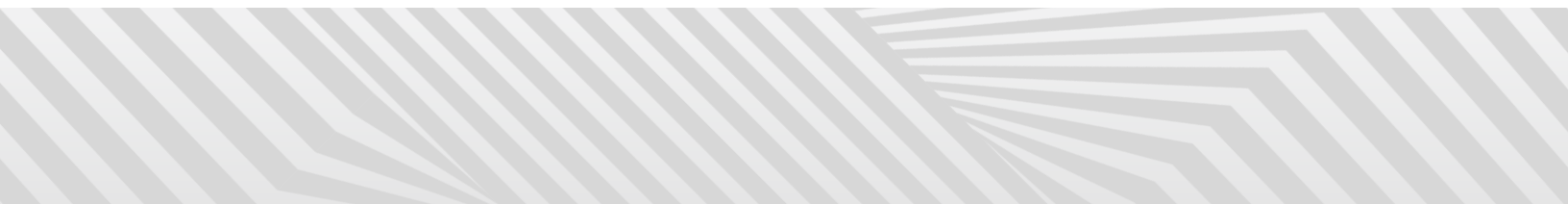
Net Rent	\$13.50 Net/SF
Available	Available Immediately
Suite 450	1,515 RSF



FLOOR PLAN | SUITE 450 - 1,515 RSF



SITE MAP

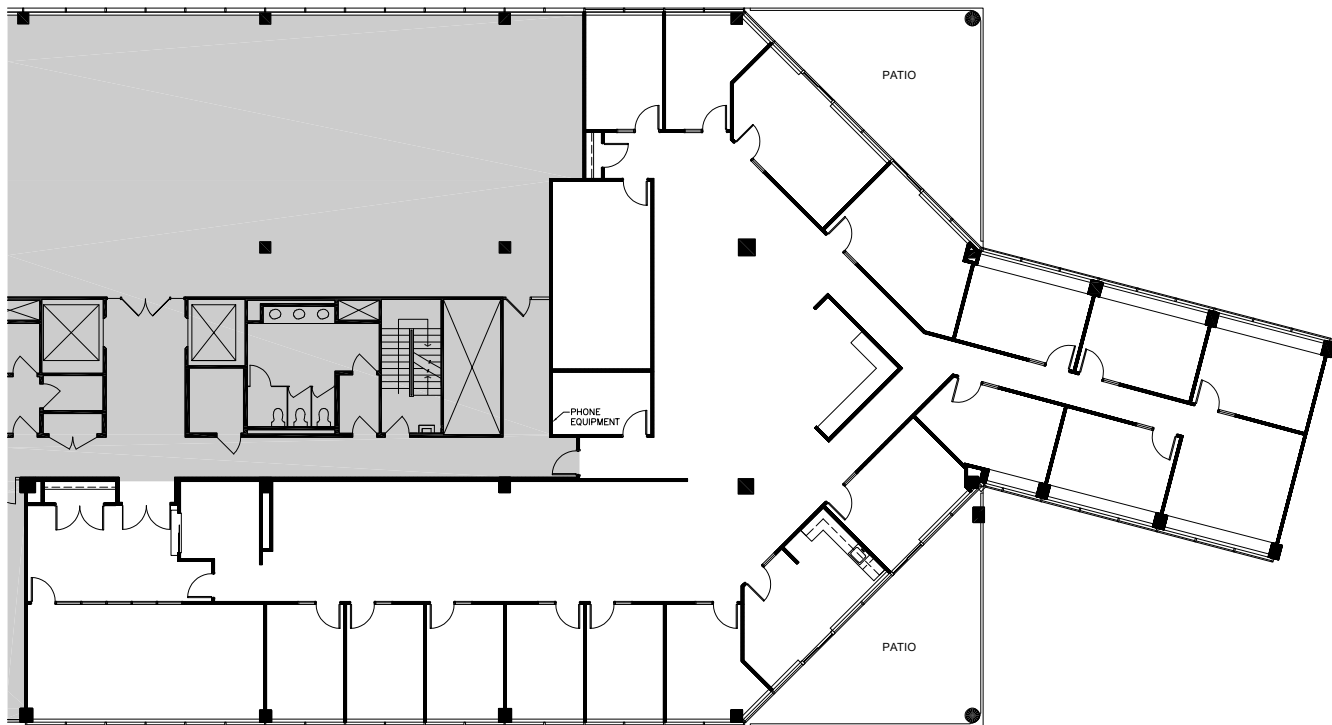


FOR LEASE | 550-650 Warrenville Road, Lisle | IL

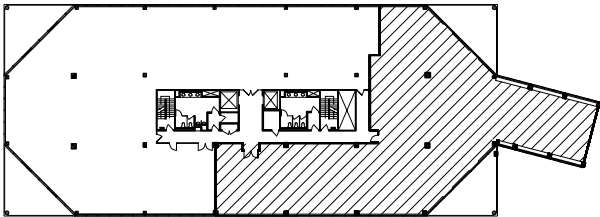
550  **650**
WARRENVILLE

Available Space

Net Rent	\$13.50 Net/SF
Available	Available Immediately
Suite 550	8,196 RSF



Key Plan:





Contact us:

Dave Florent

Principal

+1 847 698 8258

david.florent@colliers.com

Brent Jacob

Senior Vice President

+1 847 698 8215

brent.jacob@colliers.com

This document has been prepared by Colliers International for advertising and general information only. Colliers International makes no guarantees, representations or warranties of any kind, expressed or implied, regarding the information including, but not limited to, warranties of content, accuracy and reliability. Any interested party should undertake their own inquiries as to the accuracy of the information. Colliers International excludes unequivocally all inferred or implied terms, conditions and warranties arising out of this document and excludes all liability for loss and damages arising there from. This publication is the copyrighted property of Colliers International and/or its licensor(s). ©2018. All rights reserved.



colliers.com/chicago