

AUTO FACILITY & CAR WASH

680 N State Street, Hildale, UT 84784



EXECUTIVE SUMMARY



SALE PRICE

\$3,950,000

OFFERING SUMMARY

Building Size:	15,800 SF
Renovated:	2014
Zoning:	Industrial
Price / SF:	\$250.00

LOCATION OVERVIEW

Located on the corner of State Street and Field Ave. Near the Arizona border.

PROPERTY OVERVIEW

Incredible destination vehicle service/repair business and car wash facility for sale. Includes the auto body, repair, quick lube, and towing business as well as all associated real estate. Very successful car wash on site.

PROPERTY HIGHLIGHTS

- Sale includes real estate, business, inventory, large equipment and the car wash
- 8 bay mechanical shop
- 4 bay auto body shop
- 2 bay quick lube with oil pits
- 1 spray booth bay, 1 prep bay (downdraft air)
- 2-2,000 gallon, 1-800 gallon oil storage tanks
- Car wash has 2 self serve bays, 1 automatic bay, 1 truck wash, 2 vacuums
- Breakroom, living quarters, and large unfinished upstairs office for expansion

For More Information:

TRAVIS PARRY, SIOR

435.359.4901

travis@linxcre.com



AUTO FACILITY & CAR WASH

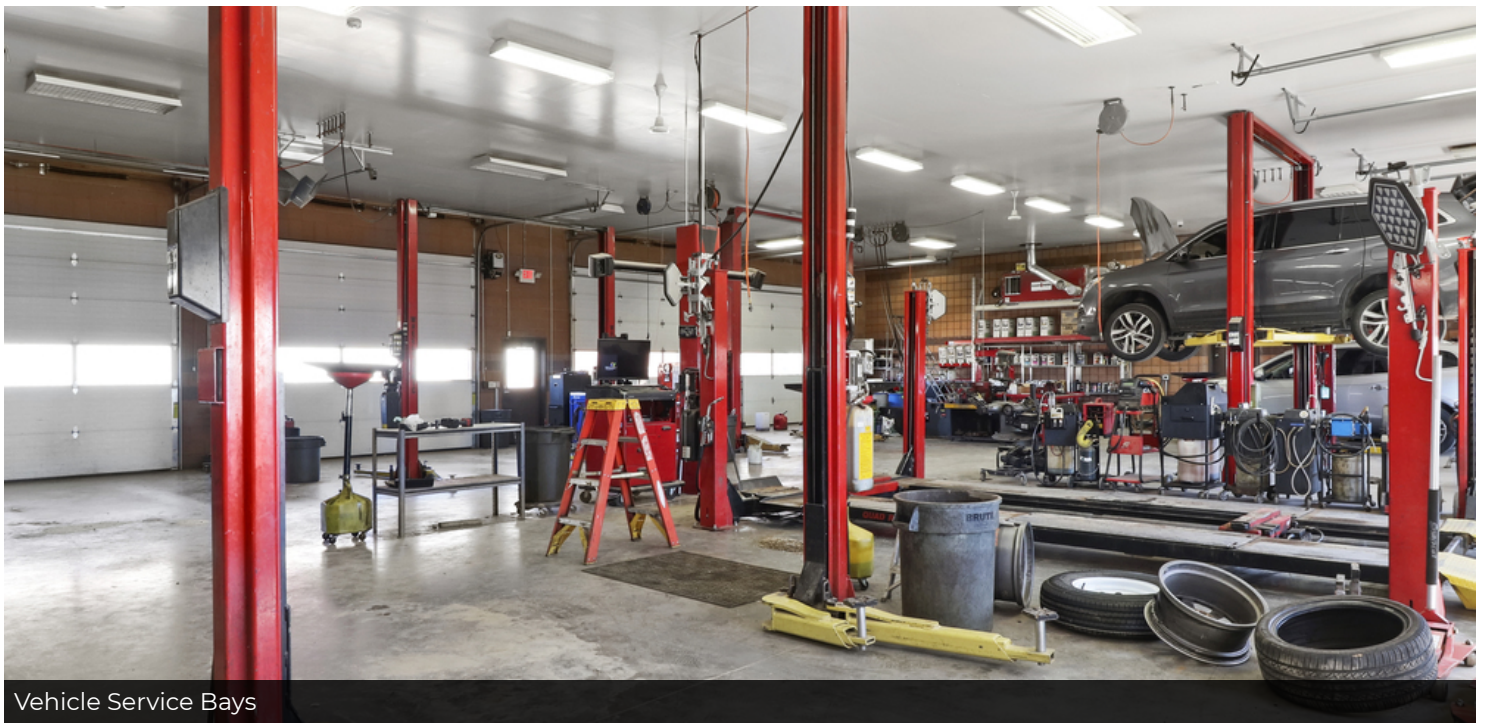
680 N State Street, Hildale, UT 84784



ADDITIONAL PHOTOS



Car Wash Front



Vehicle Service Bays

For More Information:

TRAVIS PARRY, SIOR

435.359.4901

travis@linxcre.com



AUTO FACILITY & CAR WASH

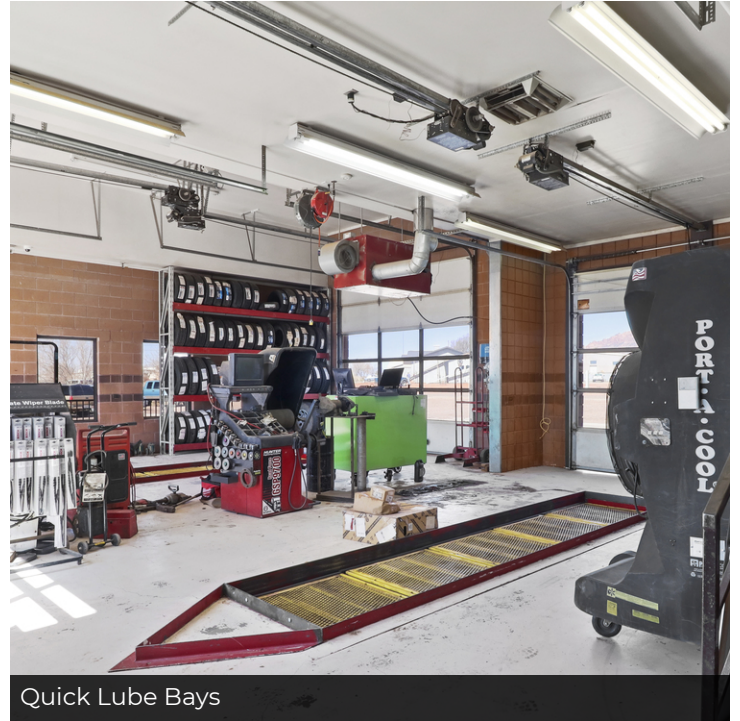
680 N State Street, Hildale, UT 84784



ADDITIONAL PHOTOS



Tire/Quick Lube Lobby



Quick Lube Bays



Paint Booth & Prep Bay

For More Information:

TRAVIS PARRY, SIOR

435.359.4901

travis@linxcre.com



AUTO FACILITY & CAR WASH

680 N State Street, Hildale, UT 84784



ADDITIONAL PHOTOS



Tire/Quick Lube Sales Counter



Car Wash Rear

For More Information:

TRAVIS PARRY, SIOR

435.359.4901

travis@linxcre.com



AUTO FACILITY & CAR WASH

680 N State Street, Hildale, UT 84784



ADDITIONAL PHOTOS



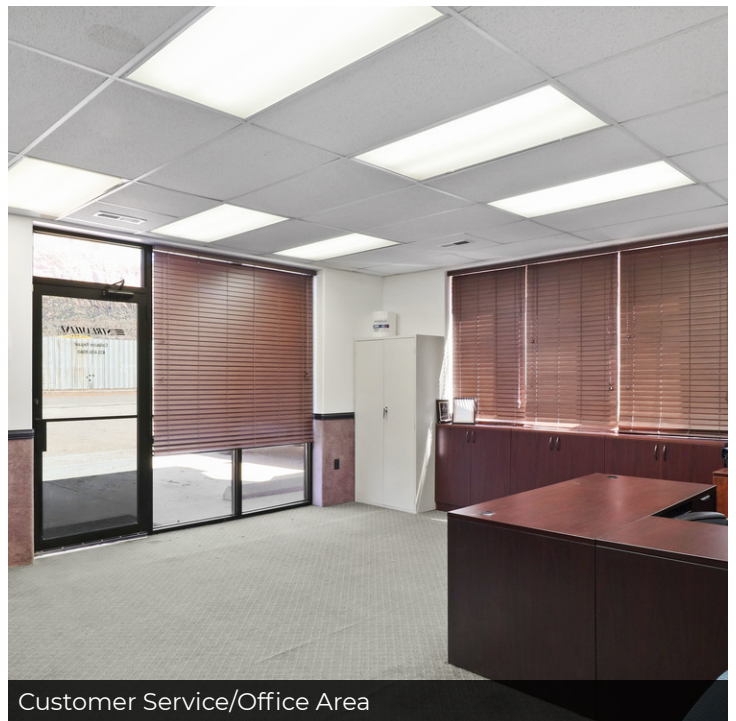
Breakroom



Living Quarters



Carwash Equipment



Customer Service/Office Area

For More Information:

TRAVIS PARRY, SIOR

435.359.4901

travis@linxcre.com



AUTO FACILITY & CAR WASH

680 N State Street, Hildale, UT 84784



ADDITIONAL PHOTOS



Northwest Aerial Looking Southeast



East Aerial Looking West

For More Information:

TRAVIS PARRY, SIOR

435.359.4901

travis@linxcre.com



AUTO FACILITY & CAR WASH

680 N State Street, Hildale, UT 84784



ADDITIONAL PHOTOS



Auto Facility Front



Aerial Overhead

For More Information:

TRAVIS PARRY, SIOR

435.359.4901

travis@linxcre.com



AUTO FACILITY & CAR WASH

680 N State Street, Hildale, UT 84784



AERIAL MAP



Google

Map data ©2022 Google Imagery ©2022, Landsat / Copernicus, Maxar Technologies, State of Utah, USDA Farm Service Agency

For More Information:

TRAVIS PARRY, SIOR

435.359.4901

travis@linxcre.com





COPYRIGHT

The subject matter on and accessible from Company (LINX Commercial Real Estate web sites, online publishing, MLS, Costar, LoopNet, Property Line, and other property databases, and publications) is copyrighted. Apart from fair dealing permitted by the Copyright Act 1968, Broker and any affiliate or agent grant permission to access, download and reproduce copyrighted material only for personal and non-commercial use. However, any such reproduction must include the appropriate copyright notice and/or credit for said work in form and substance acceptable to the copyright holder. This shall include, without limitation all photographs, video, sound, mapping, and other graphics found on any online property database or printed material. For reproduction or use of copyrighted material beyond personal and non-commercial uses, written permission must be obtained directly from the copyright holder. If given, permission will be subject to the requirements as above or as determined by the copyright holder when the material is reproduced or quoted, in whole or in part. No right, title or interest in any material is transferred to you as a result of accessing, downloading or reproducing such materials. Any and all Company or other protected marks are not to be used without prior written permission and may not be modified in anyway, nor may any mark notation be removed. Other trademarks may apply to elements within our marketing.

ACCURACY OF INFORMATION

The information contained herein, including physical measurements, has been obtained from sources deemed reliable; however, no warranties are made, either expressed or implied, regarding the accuracy of the information herein, including any property dimensions. Price, terms, property features, and availability subject to change without notice. Prospective purchasers or tenants are strongly encouraged to perform thorough due diligence with the assistance of the appropriate professional.

CAUTIONARY STATEMENT REGARDING FORWARD LOOKING INFORMATION

The Company may produce and offer "forward-looking statements" within the meaning of the safe harbor provisions of the U.S. Private Securities Litigation Reform Act of 1995. Forward-looking statements can be identified by words such as: "anticipate," "intend," "plan," "goal," "seek," "believe," "project," "estimate," "expect," "strategy," "future," "likely," "may," "should," "will" and similar references to future periods with respect to certain properties, investments, and the market. Forward-looking statements are neither historical facts nor assurances of future performance. Instead, they are based only on our current beliefs, expectations and assumptions regarding the future of our business, future plans and strategies, projections, anticipated events and trends, the economy and other future conditions. Because forward-looking statements relate to the future, they are subject to inherent uncertainties, risks and changes in circumstances that are difficult to predict and many of which are outside of our control. Our actual results and financial condition may differ materially from those indicated in the forward-looking statements. Therefore, you should not rely on any of these forward-looking statements.

NO LEGAL OR TAX ADVICE

Company and its agents are not licensed accountants or attorneys, and are not authorized to give tax and legal advice. Any discussion by Company and its agents (or any materials that contain information) regarding tax or legal issues is for convenience only and should not be relied on and is not a substitute for careful tax and legal planning. ACCORDINGLY, EACH PROSPECTIVE BUYER AND SELLER IS URGED TO CONSULT HIS OR HER OWN TAX AND LEGAL ADVISERS WITH REFERENCE TO THEIR OWN TAX SITUATION AND THE LEGAL IMPLICATIONS OF ANY TRANSACTION OR DOCUMENT.

AGENCY & COMMISSIONS

Company does not recognize nor offer sub-agency without prior written agreement. Company does not cooperate on commissions to unlicensed persons or entities, or cooperate with brokers licensed outside the State of Utah without proper verification of reciprocity, a temporary practice permit, or other legally recognized written referral agreements. In some circumstances, attorneys may be allowed to participate in commissions, subject to full disclosure, proof of representation, and prior written agreement. Company reserves the sole right to determine whether compensation will be given to a licensee that cannot produce proof of representation in a transaction in substantial written form acceptable to Company. Selling bonuses are subject to change and/or cancellation without notice. Agents should consult listing agents to verify any compensation.

For More Information:

TRAVIS PARRY, SIOR

Partner
435.359.4901
travis@linxcre.com

2 West St. George Blvd
St. George, UT 84770
435.359.4900 | linxcre.com

