

FOR LEASE

201 James E. Casey Drive Buffalo, New York



46,300 ± Sq. Ft. Industrial For Lease

Features

Total Building Size	60,000 ± Sq. Ft.
Total Available	46,300 ± Sq. Ft.
Lot Size	6.03 ± Acres
Parking	Surface Lot

Property Highlights

- 46,300 ± Sq. Ft. industrial opportunity available for lease
- 19-25' clear height
- Three (3) dock doors
- One (1) overhead door
- Additional office space available
- Central Western New York Location
- Less than one (1) mile from NYS Thruway- I-90
- Located in busy industrial area with many area amenities located nearby
- Ideal for: logistics company, distribution company, possible corporate headquarters

Demographics	1 Mile	3 Miles	5 Miles
Population	14,917	134,376	342,138
Average H.H. Income	\$64,231	\$58,824	\$69,233



Industrial / For Lease

Contact

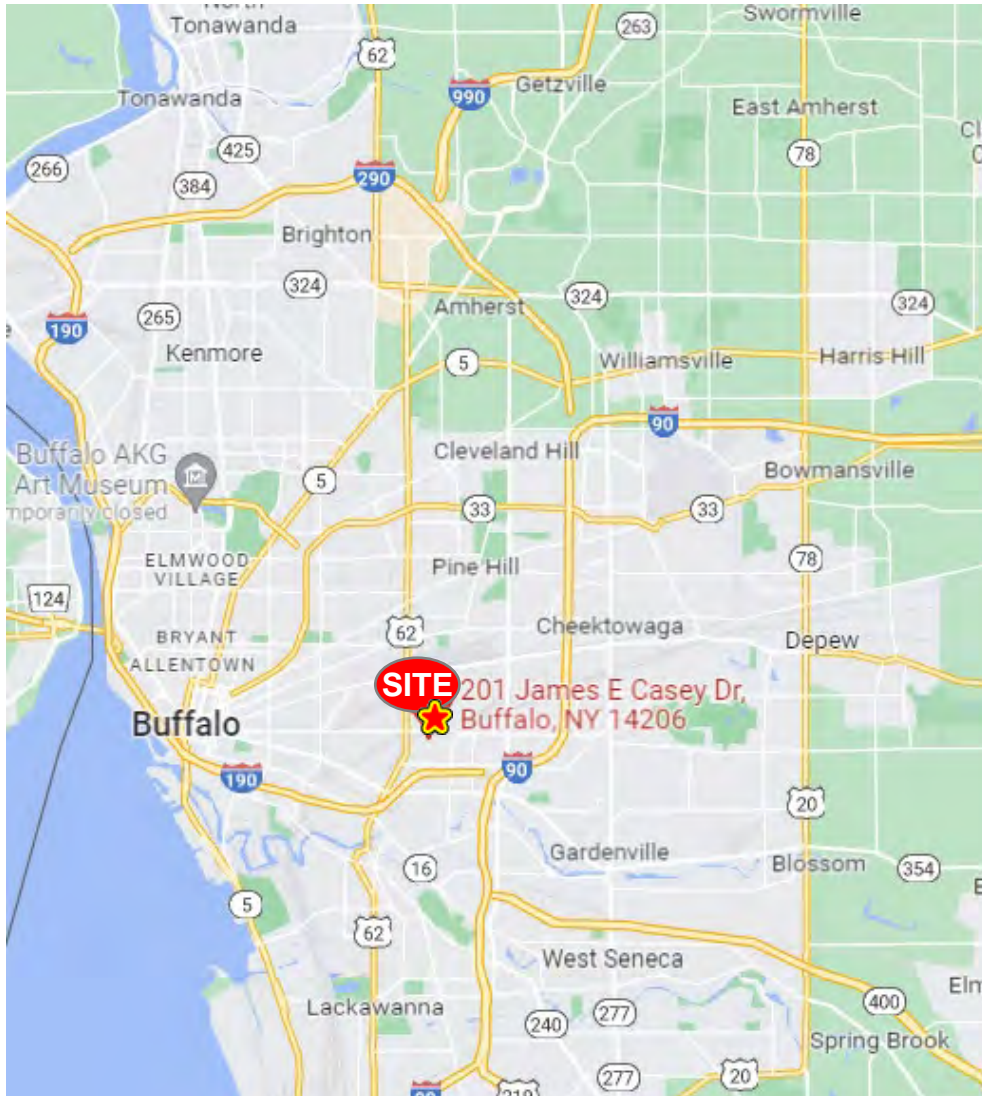
RICHARD J. SCHECHTER
Associate Real Estate Broker
716.316.4040 - cell
rschechter@pyramidbrokerage.com

ROBERT STEWART
Associate Real Estate Broker
716.868.1875 - cell
rstewart@pyramidbrokerage.com

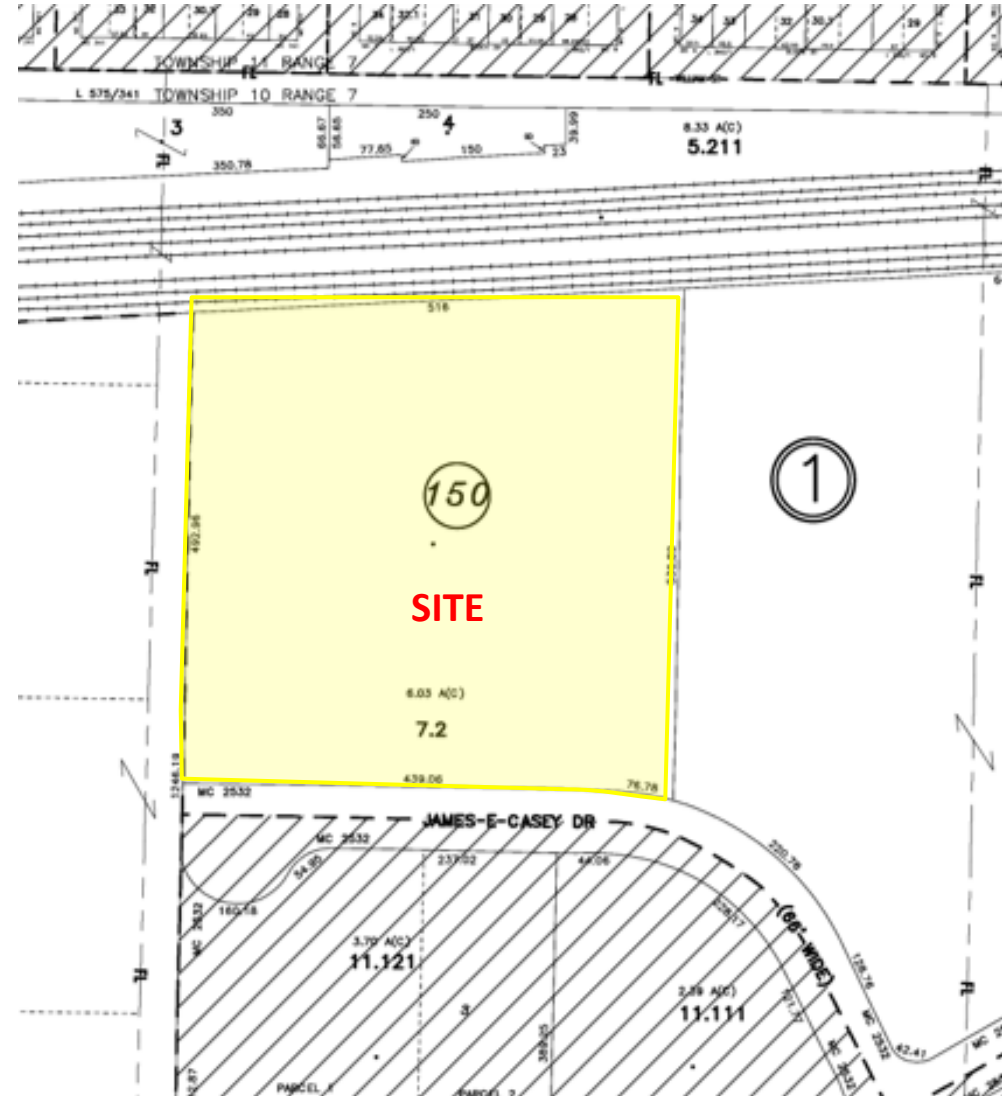
14 Lafayette Square, Suite 1900
Buffalo, New York 14203
+1 716 852 7500
pyramidbrokerage.com

FOR LEASE

**201 James E. Casey Drive
Buffalo, NY**



Location Map



Tax Map