

For Lease: Retail / Office / Restaurant

SOUTHLAND PLAZA

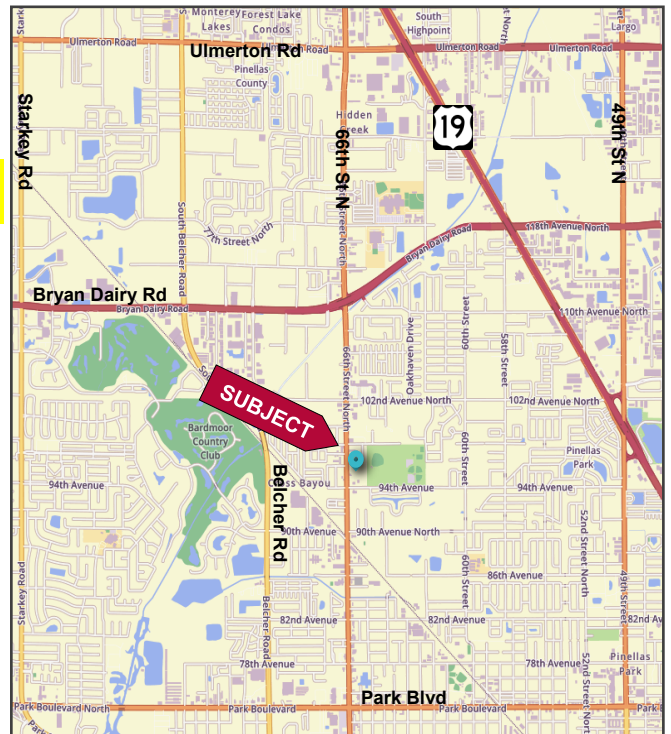
9701 66TH St. N., Pinellas Park, FL 33782



FEATURES

- ❖ Highly Visible Center located on busy 66th St. N. between Bryan Dairy Rd. and Park Blvd.
- ❖ Available spaces from 720 SF to 5,518 SF
- ❖ **5,518 SF 2nd Gen Plug & Play Restaurant/Bar - Available Now!**
- ❖ Some restaurant fixtures in place
- ❖ Excellent Tenant Mix which includes State Farm, Mexican Grill, Staffworks, Barber Shop, Coin Shop, Route 66 Diner and more!
- ❖ Resurfaced parking lot and upgraded Landscaping completed
- ❖ Leasing at \$16.00 /SF NNN
- ❖ 2024 pass through expenses: \$6.50/SF

LOCATION MAP



2023 Demographics			
	1-mile	3-mile	5-mile
Total Population	9,968	97,167	272,147
Total Households	4,123	42,144	123,556
Average HH Income	\$84,972	\$85,737	\$82,286

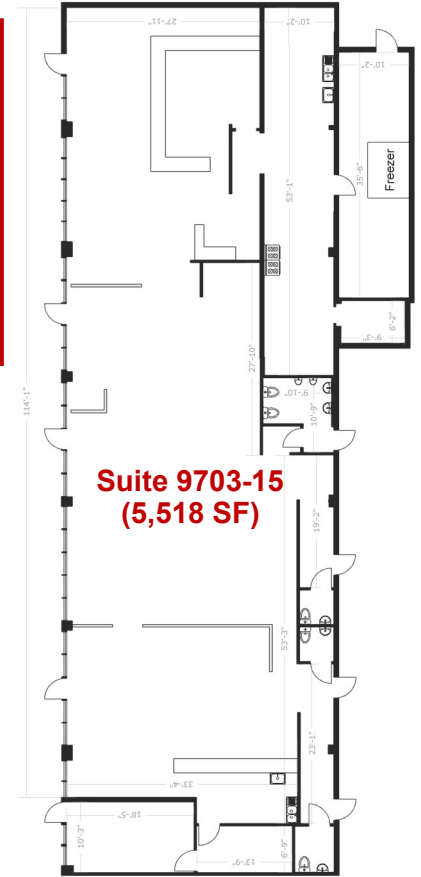
Elliott M. Ross, CCIM
 O: 813.755.6700
 C: 727.639.3800
 elliott@rossrealtytampabay.com

Chris Shryock
 O: 813.755.6700
 C: 727.412.5166
 chris@rossrealtytampabay.com

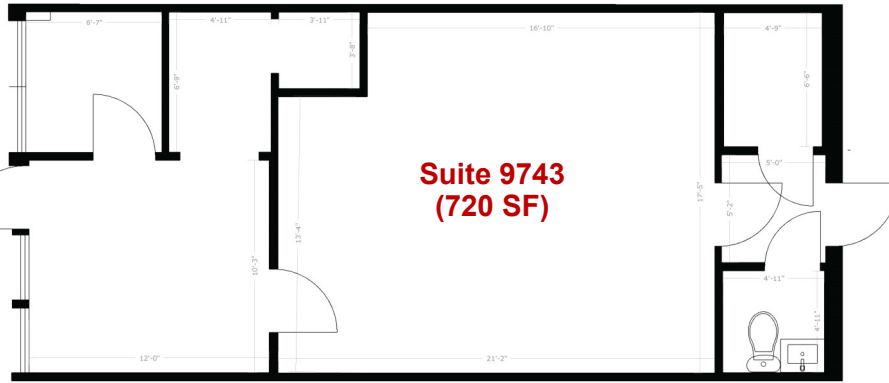
ROSS REALTY GROUP, INC.
 Henderson Centre
 3902 Henderson Blvd., Suite 203
 Tampa, FL 33629

SOUTHLAND PLAZA

9701 66th St. N., Pinellas Park, FL 33782



**Suite 9703-15
(5,518 SF)**

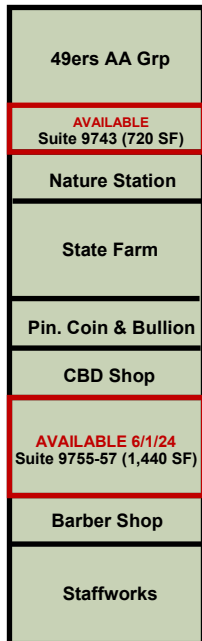


**Suite 9743
(720 SF)**

SITE PLAN



Parking



Parking

Unit	SF	Date Available
9701	720	8/1/24
9703-15	5,518	NOW
9733	900	NOW
9737	2,700	NOW
9743	720	NOW
9755-57	1,440	6/1/24

Parking



Parking

Parking

Former Thrift Store

Former Tattoo Shop

66TH STREET NORTH

Any information given herein is obtained from sources considered reliable. However, we are not responsible for misstatement of facts, errors, omissions, prior sale, withdrawal from market, modification of mortgage commitment, terms and considerations, or change in price without notice. The information supplied herein is for informational purposes only and shall not contain a warranty or assurance that said information is correct. Any person intending to rely upon the information supplied herein should verify said information independently.