

±10.9 ACRES VACANT MULTIFAMILY LAND

EMERALD SPRINGS WAY | EXCLUSIVE LISTING | BROOKSVILLE, HERNANDO COUNTY, FL

Subject

DESCRIPTION Land Advisors Organization is pleased to exclusively offer ±10.90 acres of vacant commercial land in Brooksville, FL.

LOCATION The property is located on the north side of SR 50/ Cortez Boulevard, approximately a half mile from Broad Street (U.S. Highway 41).

SIZE ±10.90 Acres

HERNANDO COUNTY PARCEL KEY# 1631336

COMMERCIAL NEARBY Brooksville Regional Hospital is conveniently located nearby as are major shopping centers on State Road 50 and U.S. Highway 41 featuring Publix, Walmart, Lowes, Bealls Outlet, Walgreens and CVS. This property is approximately 2 miles southwest of Historic Downtown Brooksville featuring additional boutiques and restaurants.

ZONING According to the City of Brooksville, the parcel is zoned C2. Permitted uses include: retail, grocery, hardware shops, farm and garden supply shops, pet shops, discount stores, breweries, hospitals, vehicle repair shops, vehicle sales, rehabilitation centers, and hotel/motel. Numerous additional uses may be conditionally approved as well.

POPULATION GROWTH According to the State of Florida Hernando County's population is expected to grow over 18% between 2015 - 2025.

PRICE \$1,200,000

Nancy Surak, ALC, CCIM | nsurak@landadvisors.com

Licensed Florida Real Estate Broker

1646 W. Snow Avenue, Suite 33 Tampa, Florida 33606 ph. 813.448.1999 | www.landadvisors.com

The information contained herein is from sources deemed reliable. We have no reason to doubt its accuracy but do not guarantee it. It is the responsibility of the person reviewing this information to independently verify it. This package is subject to change, prior sale or complete withdrawal. FLHernando242592



PROPERTY PHOTOS

Nancy Surak | 813.448.1999 | www.landadvisors.com



PROPERTY PHOTOS

Nancy Surak | 813.448.1999 | www.landadvisors.com



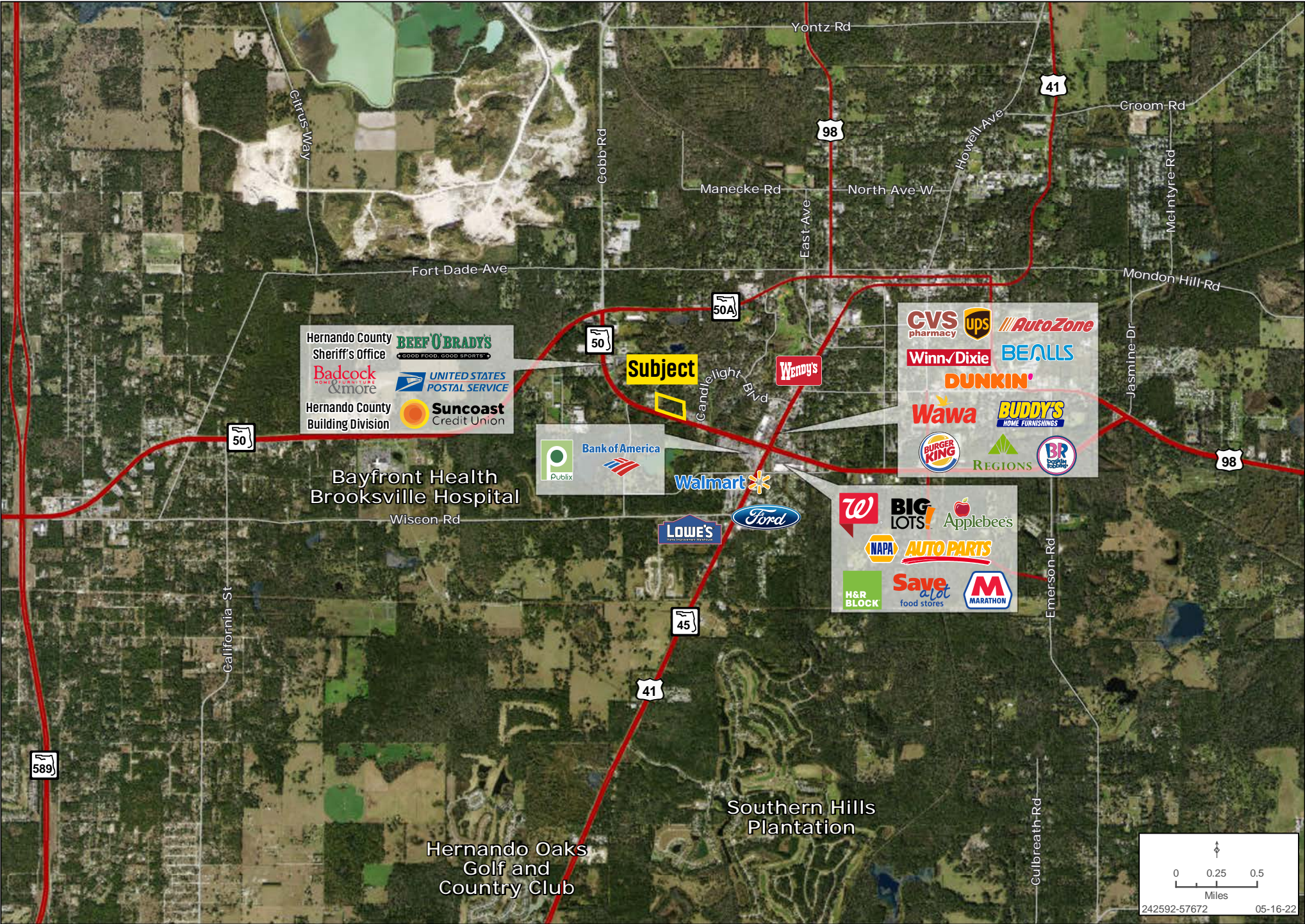
DETAIL MAP

Nancy Surak | 813.448.1999 | www.landadvisors.com



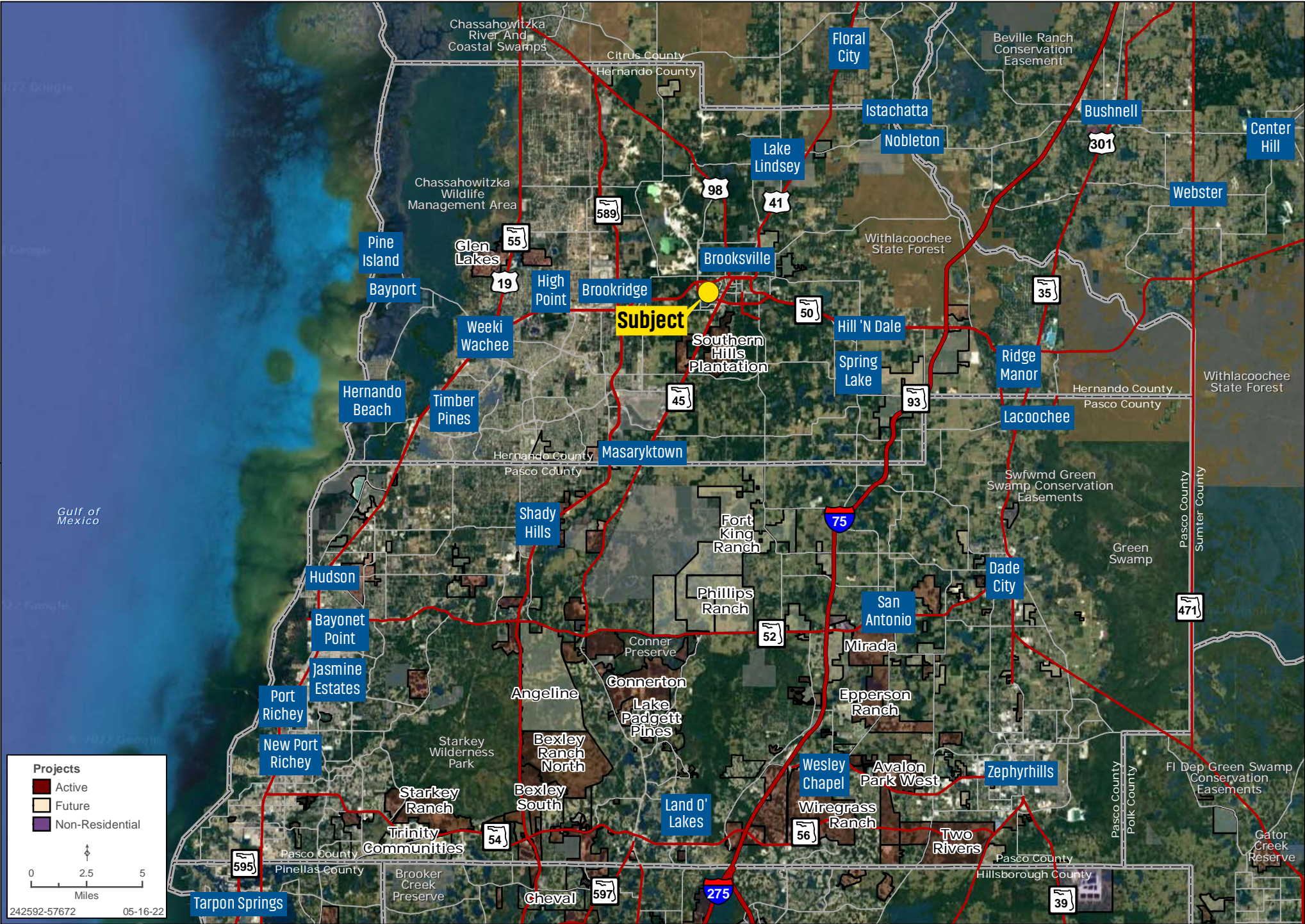
RETAIL MAP

Nancy Surak | 813.448.1999 | www.landadvisors.com



REGIONAL MAP

Nancy Surak | 813.448.1999 | www.landadvisors.com



METRO MAP

Nancy Surak | 813.448.1999 | www.landadvisors.com

