

CITRA TIMBERLANDS

1,892 ± ACRES | MARION COUNTY, FLORIDA | TIMBER INVESTMENT & RECREATION TRACT

DEAN SAUNDERS ALC, CCIM
MANAGING DIRECTOR, OWNER
& SENIOR ADVISOR
863.287.8340
DEAN@SVN.COM

TONY WALLACE, CF
SENIOR ADVISOR
352.538.7356
TONY.WALLACE@SVN.COM

GREG DRISKELL
ADVISOR
386.867.2736
GREG.DRISKELL@SVN.COM

DUSTY CALDERON
SENIOR ADVISOR
407.908.9525
DUSTYC@SVN.COM



SALE PRICE**\$4,351,600****OFFERING SUMMARY**

ACREAGE:	1,892 Acres
PRICE / ACRE:	\$2,300
CITY:	CR 318, Citra
COUNTY:	Marion
PROPERTY TYPE:	Ranch & Recreation, Timberland
VIDEO:	View Here

PROPERTY OVERVIEW

Citra Timberlands is a 1,892-acre timber property with excellent recreational potential. 142-acres of the property has merchantable slash and loblolly pines, with various planting dates. Located less than 20 miles is the Ocala National Forest which provides an ideal surrounding habitat for Whitetail deer, Osceola turkeys, and other wildlife. Many trails on the property provide opportunities for ATV riding or horseback riding. This timber and recreational property is convenient to both Ocala and Gainesville while still being a 90-minute drive from either coast of Florida. Citra Timberlands is a beautiful property with live oak hammocks that would make a great camp or home site, plus merchantable pine plantations for income.

SPECIFICATIONS & FEATURES

LAND TYPES:	<ul style="list-style-type: none"> • Equestrian • Hunting & Recreation Properties • Ranch • Timberland
UPLANDS / WETLANDS:	50% uplands
SOIL TYPES:	<ul style="list-style-type: none"> • Lynne Sand • Pomona Sand • and Paisley Loamy Fine Sand dominate the uplands. Wetlands are primarily Samsula-Martel Complex • Depressional.
TAXES & TAX YEAR:	\$4,222 for 2021
ZONING / FLU:	A1 (Agricultural)
ROAD FRONTAGE:	Over 3/4 mile along Highway 318
NEAREST POINT OF INTEREST:	Ocala National Forest, Oklawaha River and Rodman Reservoir, World Equestrian Center, Payne's Prairie State Park
CURRENT USE:	Timber production, recreational hunting
GAME POPULATION INFORMATION:	Deer, Osceola wild turkeys, and feral hogs common.
AGE OF STAGES OF TIMBER:	142 acres merchantable slash and loblolly pines, with various planting dates



LOCATION & DRIVING DIRECTIONS

PARCEL:

04467-000-00 04628-000-00 04627-000-00 04729-000-00 04473-000-00 and 04453-000-00

GPS:

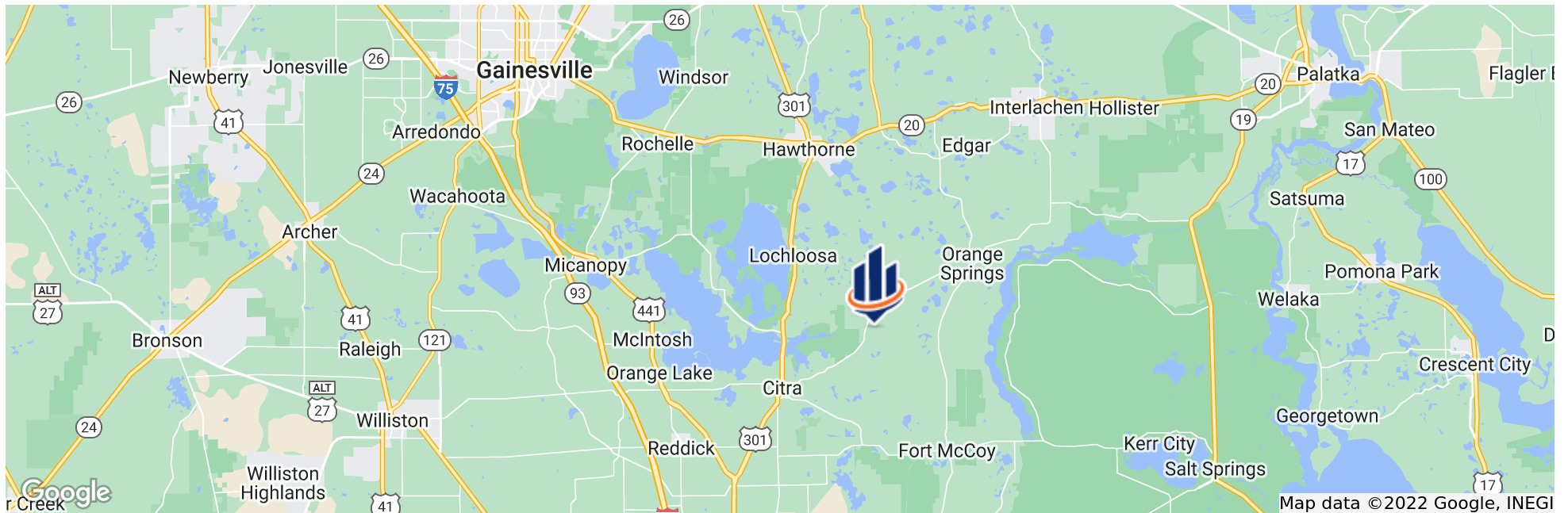
29.4554577, -82.0278337

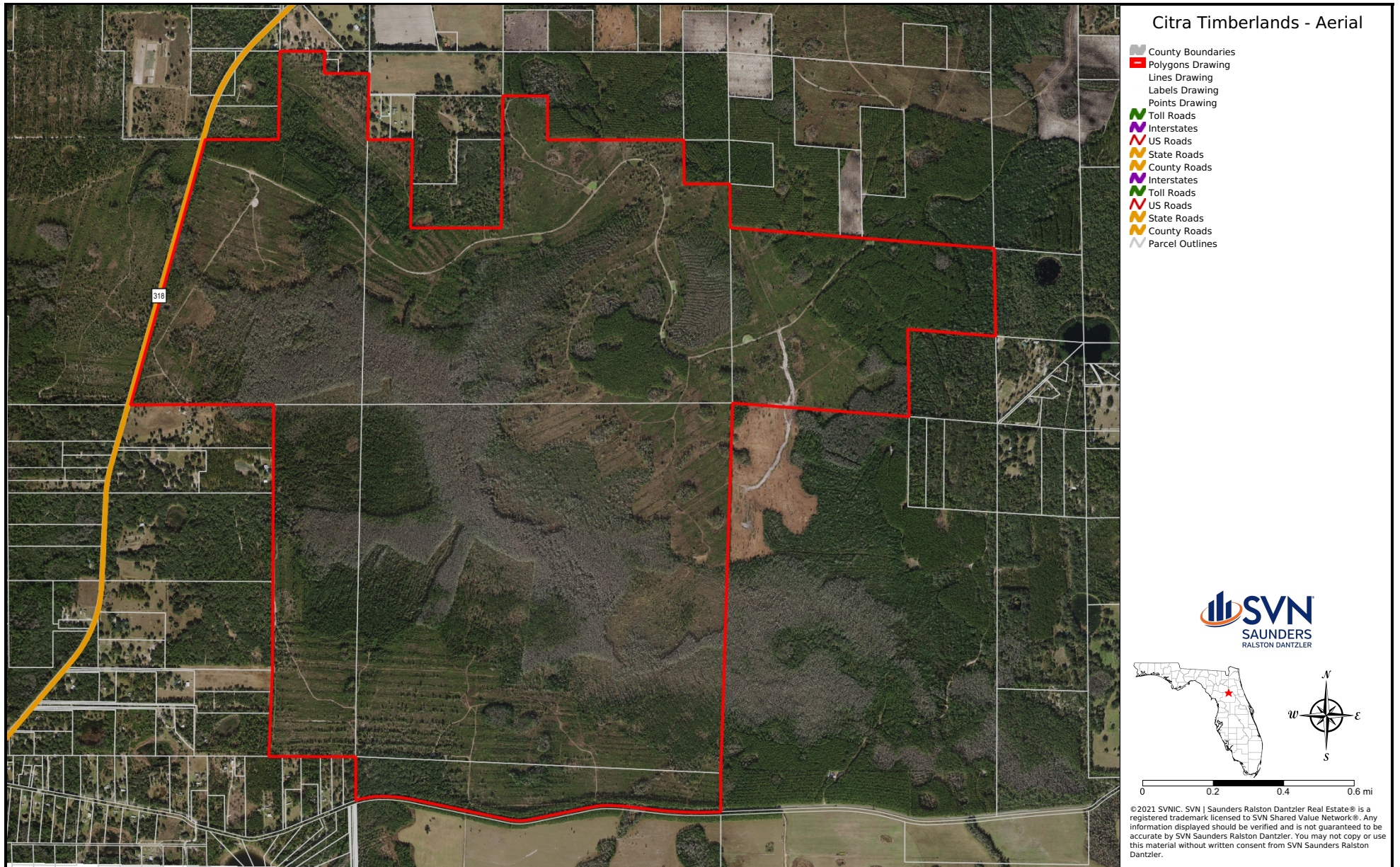
DRIVING DIRECTIONS:

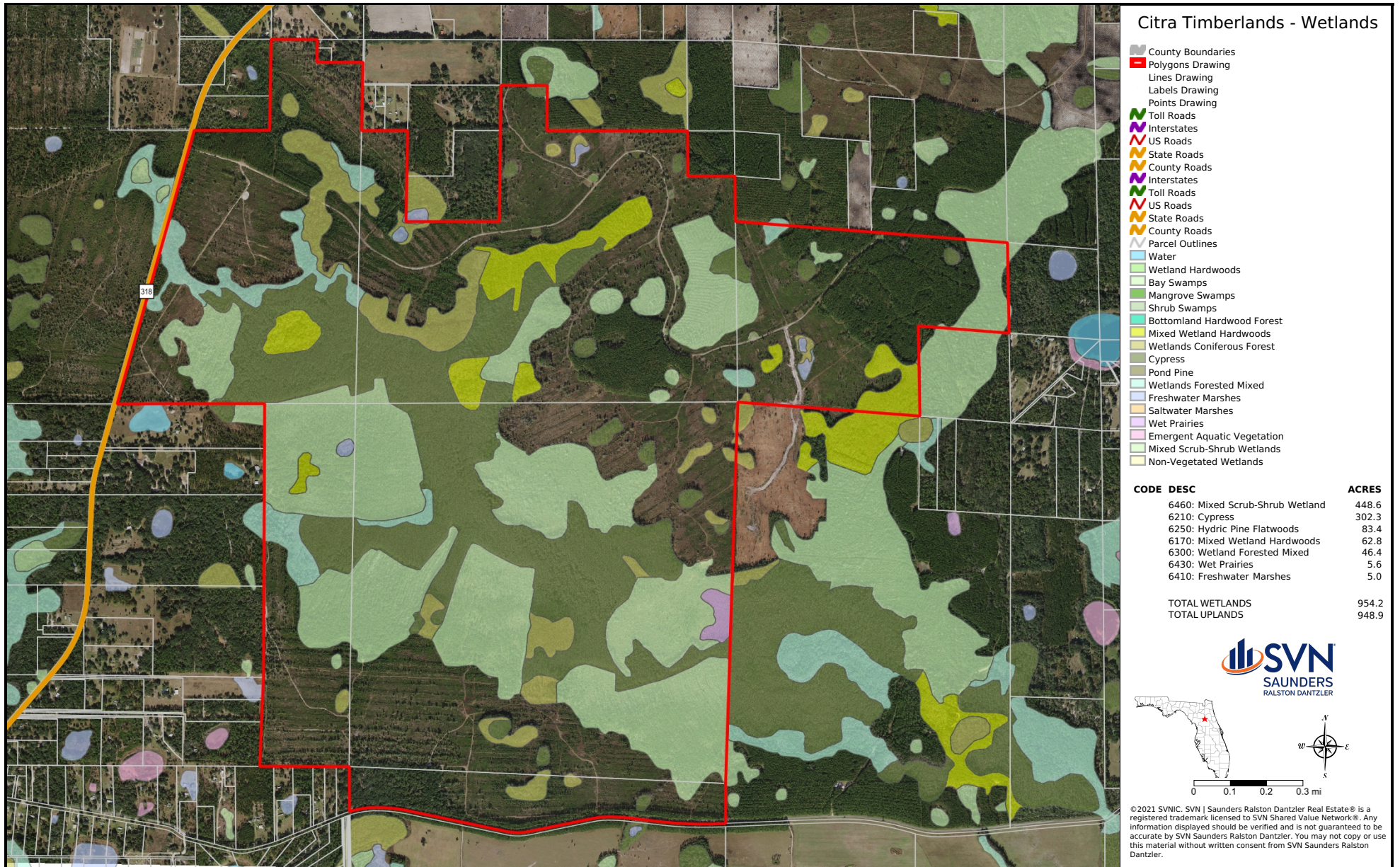
- From US 301 and CR 318 intersection in Citra, go east on CR 318
- Tract begins after 5.6 miles on your right.

SHOWING INSTRUCTIONS:

Call listing agents





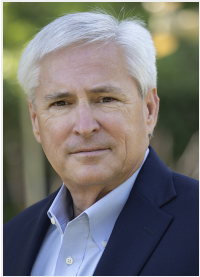












DEAN SAUNDERS ALC, CCIM

Managing Director/ Senior Advisor

D: 863.774.3522 | C: 863.287.8340
dean@svn.com



JOHN A. "TONY" WALLACE, CF

Senior Advisor

D: 352.505.9274 | C: 352.538.7356
tony.wallace@svn.com



GREG DRISKELL

Advisor

D: 386.385.7304 | C: 386.867.2736
greg.driskell@svn.com



DUSTY CALDERON

Senior Advisor

D: 407.329.4079 | C: 407.908.9525
dustyc@svn.com



For more information visit SVNsaunders.com

HEADQUARTERS

1723 Bartow Road
Lakeland, Florida 33801
863.648.1528

ORLANDO

605 E Robinson Street, Suite 410
Orlando, Florida 32801
407.516.4300

NORTH FLORIDA

356 NW Lake City Avenue
Lake City, Florida 32055
386.438.5896

GEORGIA

125 N Broad Street, Suite 210
Thomasville, Georgia 31792
229.299.8600

©2022 SVN | Saunders Ralston Dantzler Real Estate. All SVN® Offices Independently Owned and Operated SVN | Saunders Ralston Dantzler Real Estate is a full-service land and commercial real estate brokerage with over \$4 billion in transactions representing buyers, sellers, investors, institutions, and landowners since 1996. We are recognized nationally as an authority on all types of land, including agriculture, ranch, recreation, residential development, and international properties. Our commercial real estate services include property management, leasing and tenant representation, valuation, business brokerage, and advisory and counseling services for office, retail, industrial, and multifamily properties. Our firm also features an auction company, forestry division, international partnerships, hunting lease management, and extensive expertise in conservation easements. Located in Florida and Georgia, we provide proven leadership and collaborative expertise backed by the strength of the SVN® global platform.

