

Property Description

PROPERTY DESCRIPTION

This 2.03-acre parcel is ideally located at a lighted corner in the heart of Seffner, FL. The property has the potential to be rezoned for commercial uses and benefits from having no wetlands on site and be located directly across the street from a Publix and Walmart anchored plaza. The site has approximately 308 feet of frontage on Martin Luther King Blvd which has 32,500 average annual traffic count on it. With a successful rezoning, this parcel offers a lot of opportunity for a commercial developer.

LOCATION DESCRIPTION

The property is located on the south west corner of E. Martin Luther King Blvd. and Highview Road in Seffner, FL. It is on the going home side of the road and is at a lightened corner directly across the street from a Publix anchored shopping center.

PROPERTY SIZE

2.03 Acres

ZONING

ASC-1 with a R-6 Future Land Use

PARCEL ID

065914-0000

PROPERTY OWNER

David Wyly Trustee
Cheryl Wyly Trustee
Larry Lentz

PRICE

\$1,900,000

BROKER CONTACT INFO

Ryan Sampson, CCIM, ALC
Principal
813.287.8787 x4
Ryan@TheDirtDog.com

Aerial



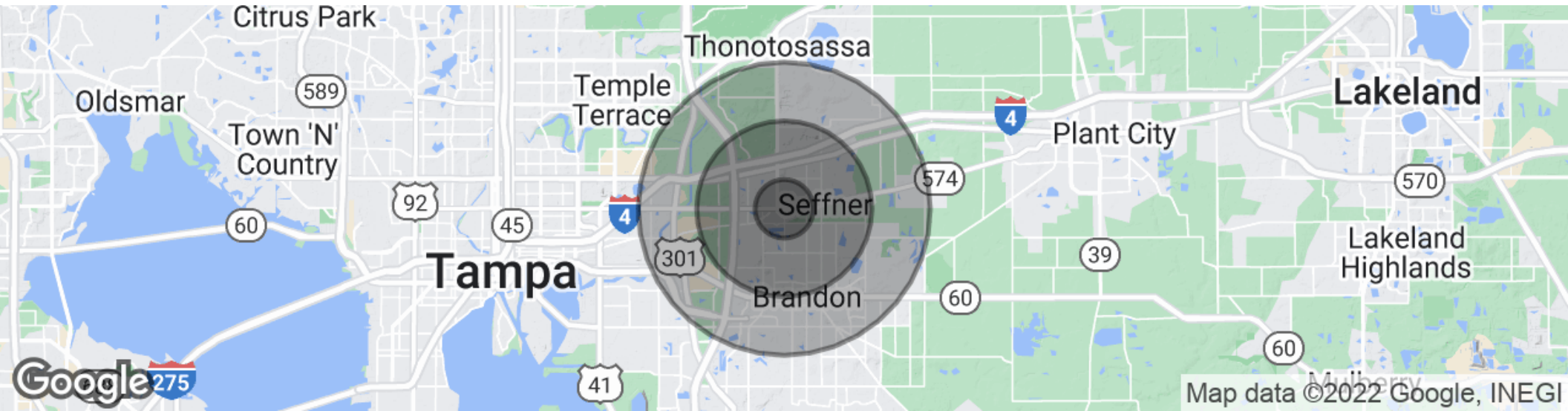
Aerials (cont.)



Aerials (cont.)



Demographics Map & Report



POPULATION

Total population
Median age
Median age (Male)
Median age (Female)

1 MILE

7,841
34.3
32.0
37.9

3 MILES

59,160
35.2
33.7
36.4

5 MILES

131,568
34.9
33.3
36.1

HOUSEHOLDS & INCOME

Total households
of persons per HH
Average HH income
Average house value

1 MILE

2,902
2.7
\$55,232
\$202,677

3 MILES

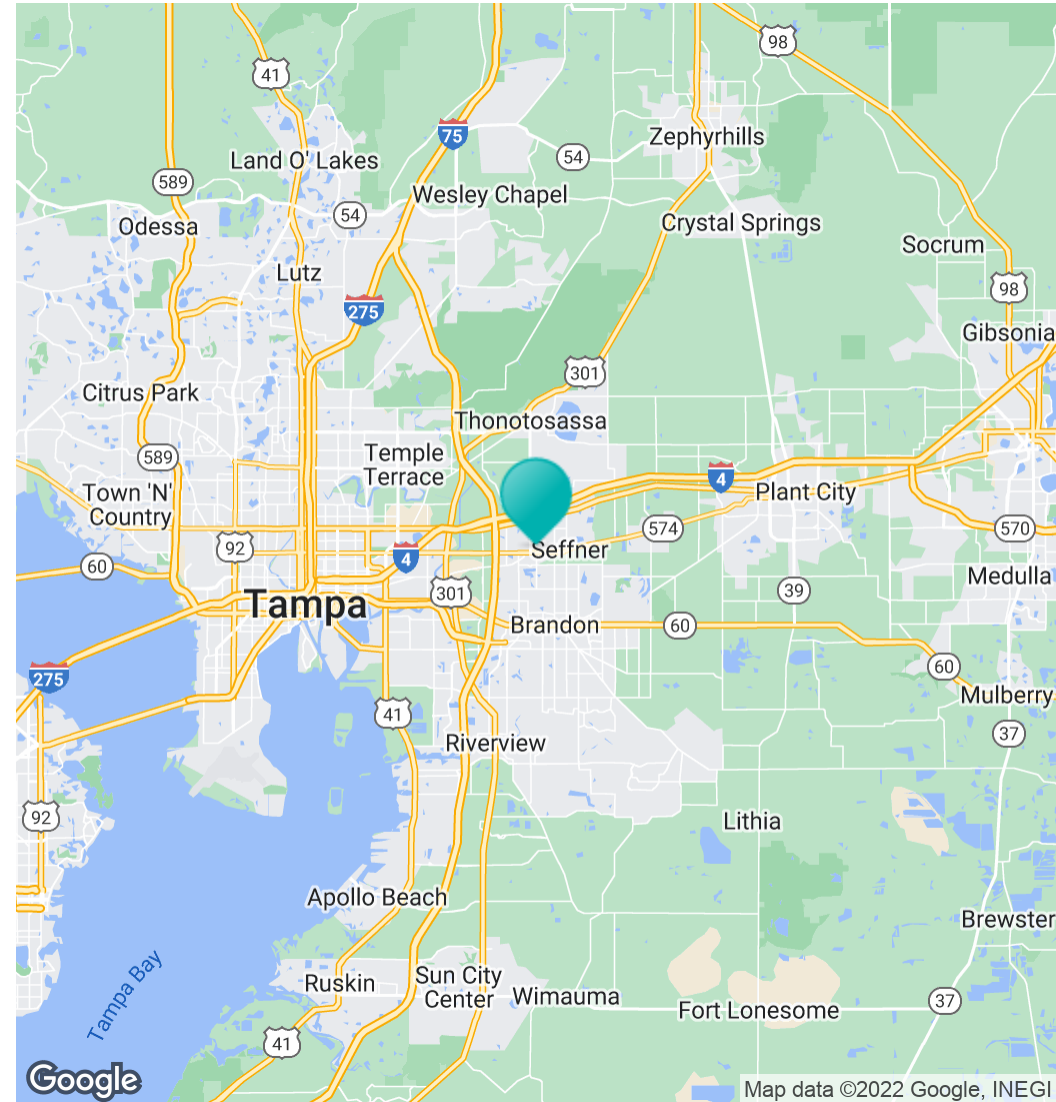
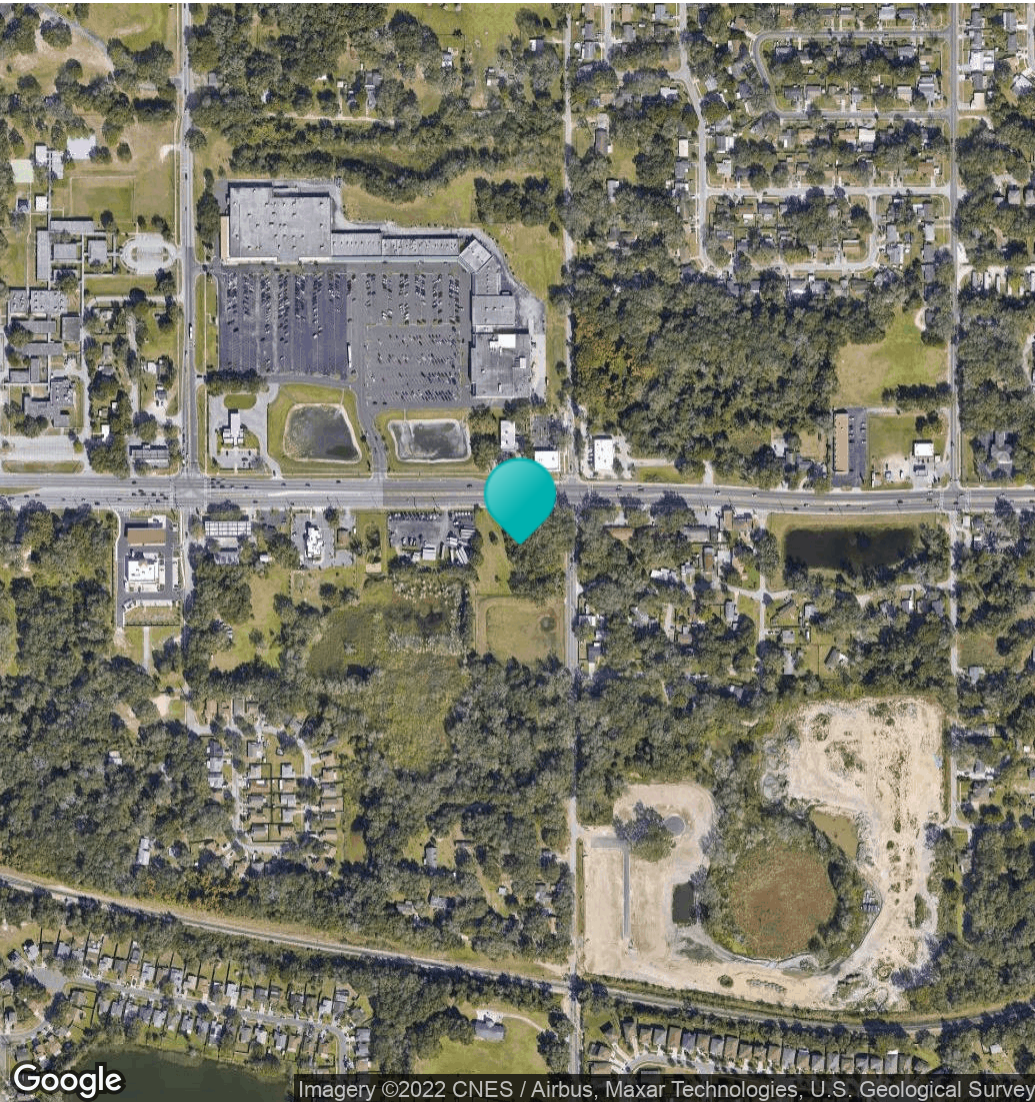
21,771
2.7
\$60,573
\$196,790

5 MILES

49,011
2.7
\$61,687
\$201,701

* Demographic data derived from 2020 ACS - US Census

Location Maps



Confidentiality & Disclaimer

All materials and information received or derived from Eshenbaugh Land Company, LLC its directors, officers, agents, advisors, affiliates and/or any third party sources are provided without representation or warranty as to completeness, veracity, or accuracy, condition of the property, compliance or lack of compliance with applicable governmental requirements, developability or suitability, financial performance of the property, projected financial performance of the property for any party's intended use or any and all other matters.

Neither Eshenbaugh Land Company, LLC its directors, officers, agents, advisors, or affiliates makes any representation or warranty, express or implied, as to accuracy or completeness of the any materials or information provided, derived, or received. Materials and information from any source, whether written or verbal, that may be furnished for review are not a substitute for a party's active conduct of its own due diligence to determine these and other matters of significance to such party. Eshenbaugh Land Company, LLC will not investigate or verify any such matters or conduct due diligence for a party unless otherwise agreed in writing. EACH PARTY SHALL CONDUCT ITS OWN INDEPENDENT INVESTIGATION AND DUE DILIGENCE.

Any party contemplating or under contract or in escrow for a transaction is urged to verify all information and to conduct their own inspections and investigations including through appropriate third party independent professionals selected by such party. All financial data should be verified by the party including by obtaining and reading applicable documents and reports and consulting appropriate independent professionals. Eshenbaugh Land Company, LLC makes no warranties and/or representations

regarding the veracity, completeness, or relevance of any financial data or assumptions. Eshenbaugh Land Company, LLC does not serve as a financial advisor to any party regarding any proposed transaction. All data and assumptions regarding financial performance, including that used for financial modeling purposes, may differ from actual data or performance. Any estimates of market rents and/or projected rents that may be provided to a party do not necessarily mean that rents can be established at or increased to that level. Parties must evaluate any applicable contractual and governmental limitations as well as market conditions, vacancy factors and other issues in order to determine rents from or for the property.

Legal questions should be discussed by the party with an attorney. Tax questions should be discussed by the party with a certified public accountant or tax attorney. Title questions should be discussed by the party with a title officer or attorney. Questions regarding the condition of the property and whether the property complies with applicable governmental requirements should be discussed by the party with appropriate engineers, architects, contractors, other consultants and governmental agencies. All properties and services are marketed by Eshenbaugh Land Company, LLC in compliance with all applicable fair housing and equal opportunity laws.

Eshenbaugh Land Company is a licensed real estate brokerage firm in Florida and William A. Eshenbaugh is the broker of record.