

For Lease
±2,000-6,349 SF
Office Space

New Ownership! | Great Rates | Superb Central Palm Beach County Location

Commerce Pointe Gold

1800 South Australian Avenue
West Palm Beach, FL 33401

Property Features

- Fantastic leasing opportunity in the well-known and stunning Commerce Pointe Gold building
- Fully built out suite with high-end finishes
- Adjacent to DoubleTree by Hilton Hotel and I-95
- Central Palm Beach County location with great airport access and just five minutes from Downtown West Palm Beach
- Tenants enjoy ample parking, pond views and lush landscaping

For More Information:

Jason L. Sundook, SIOR

Principal | jsundook@mhcreal.com

Key Features:



**Great location
adjacent to I-95**



**Near the best of
the Palm Beaches**



**Spacious, fully
built-out space**



**Tenant improvement
allowance available**

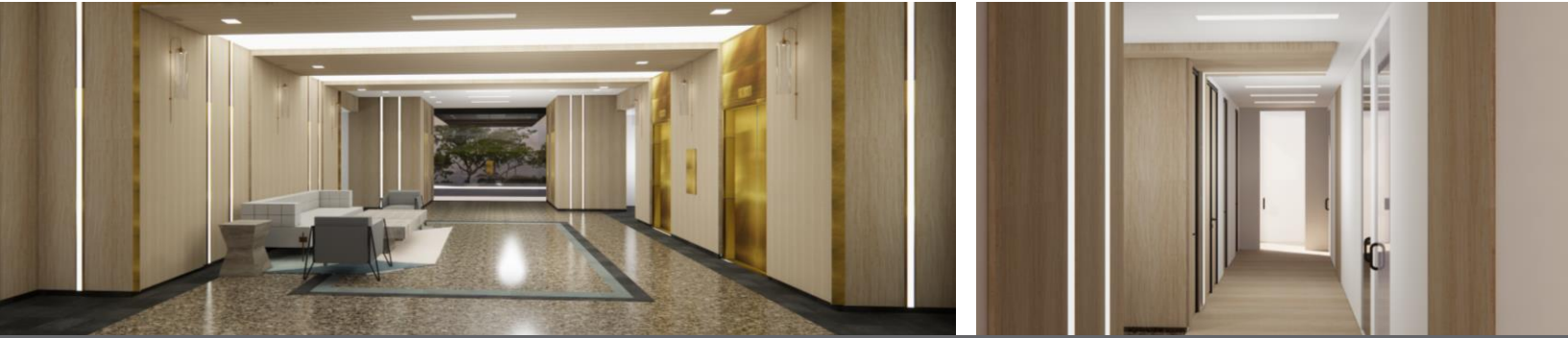


**Lushly landscaped
with pond views**



FOR LEASE: COMMERCE POINTE GOLD, WEST PALM BEACH, FL

PROPERTY IMPROVEMENTS COMING SOON



NEW LOBBY & COMMON AREA UPGRADES ON THE WAY!*



*Renderings are subject to change.

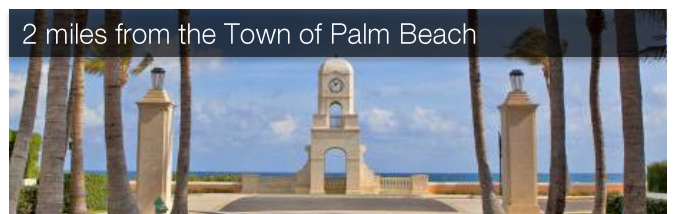
Near the Best of the Palm Beaches

- 1 mile from I-95 and 5 miles from the Florida Turnpike
- 1.5 miles from Downtown West Palm Beach including The Square West Palm, Clematis Street, Flagler Financial District and the Governmental Center & Courthouse
- Adjacent to Grandview Public Market
- Minutes from the Palm Beach International Airport and the Town of Palm Beach

For more information

Jason L. Sundook, SIOR

Principal | jsundook@mhcreal.com



NO WARRANTY OR REPRESENTATION, EXPRESS OR IMPLIED, IS MADE AS TO THE ACCURACY OF THE INFORMATION CONTAINED HEREIN, AND THE SAME IS SUBMITTED SUBJECT TO ERRORS, OMISSIONS, CHANGE OF PRICE, OR WITHDRAWAL WITHOUT NOTICE.



561 471 8000



1601 Forum Place, Suite 700
West Palm Beach, FL 33401



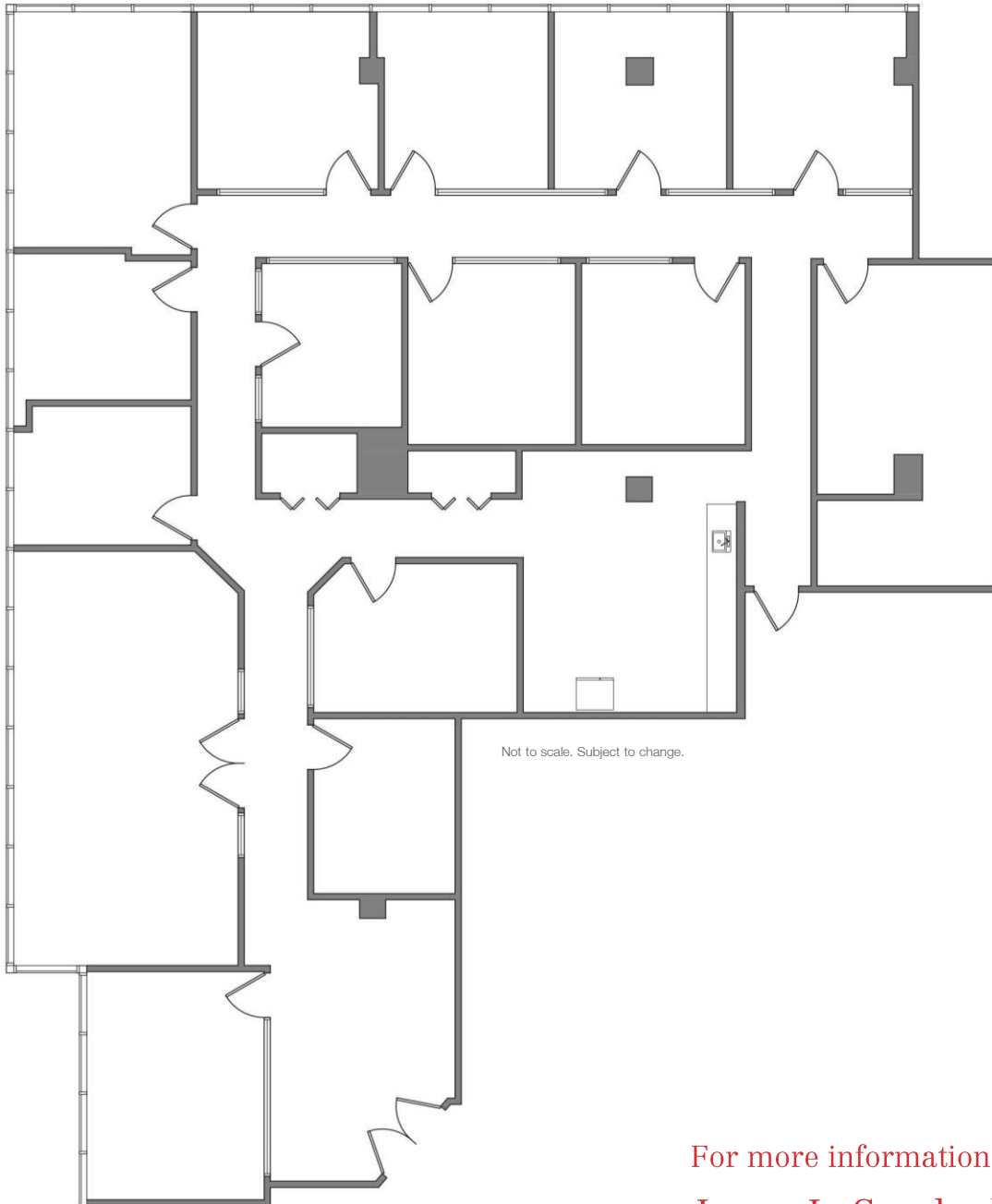
www.mhcreal.com

FOR LEASE: COMMERCE POINTE GOLD, WEST PALM BEACH, FL

Spacious & Fully Built-Out Office Space

Suite 301 ±4,364 SF

Available 08/01/2023



For more information

Jason L. Sundook, SIOR

Principal | jsundook@mhcreal.com

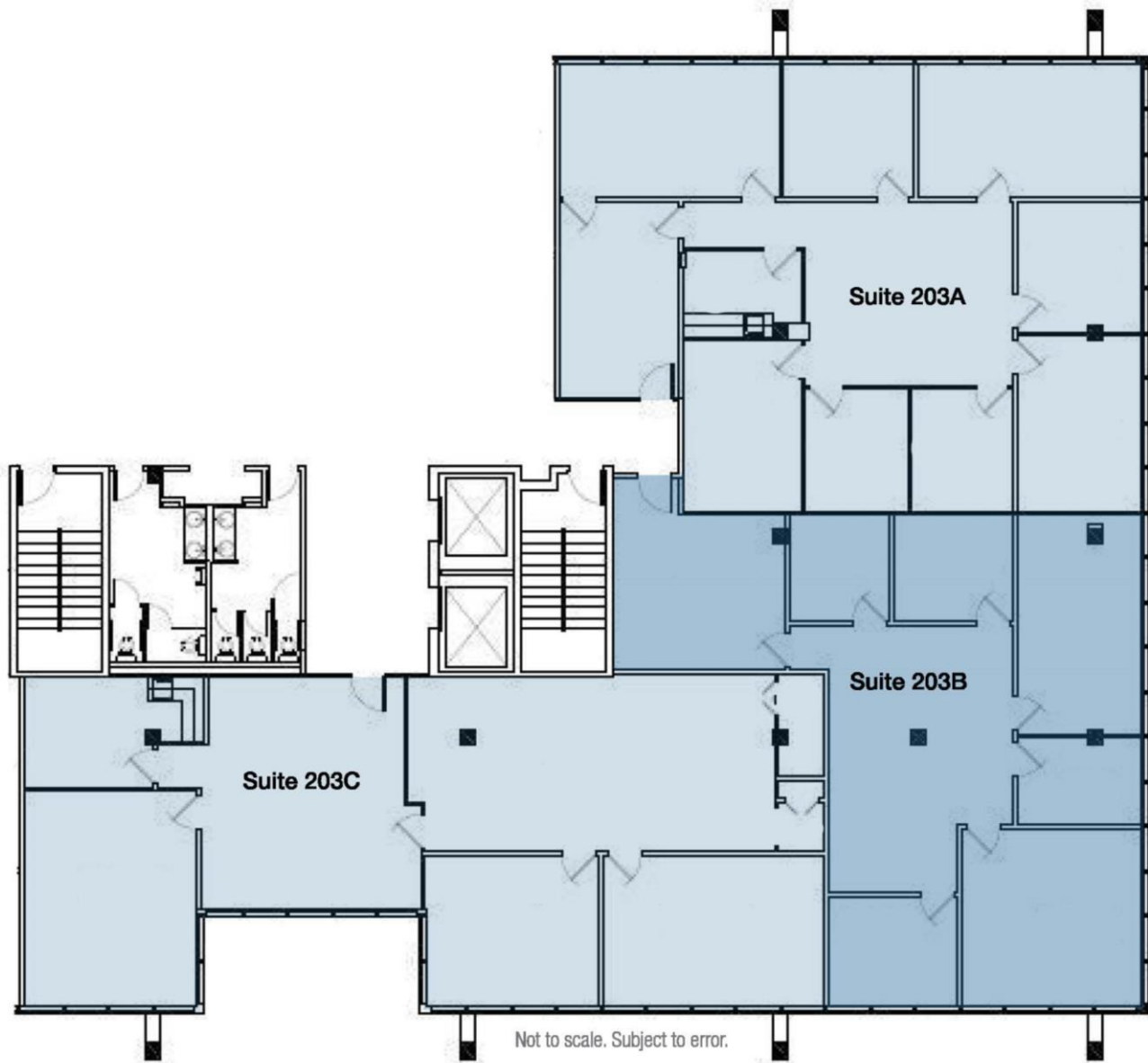


FOR LEASE: COMMERCE POINTE GOLD, WEST PALM BEACH, FL

Great Layout with Flexible Floor Plan Options

Suite 203 ±6,349 SF *divisible to approx. 2,000 SF*

Available 09/01/2023



For more information

Jason L. Sundook, SIOR

Principal | jsundook@mhcreal.com

NO WARRANTY OR REPRESENTATION, EXPRESS OR IMPLIED, IS MADE AS TO THE ACCURACY OF THE INFORMATION CONTAINED HEREIN, AND THE SAME IS SUBMITTED SUBJECT TO ERRORS, OMISSIONS, CHANGE OF PRICE, OR WITHDRAWAL WITHOUT NOTICE.



561 471 8000



1601 Forum Place, Suite 700
West Palm Beach, FL 33401



www.mhcreal.com