



500 N. 72nd Avenue Wausau, WI 54401

Property Features

- Easy access from I-39 and Hwy 29.
- 30.11 acres in prime location.
- Heart of West Wausau Industrial Park.
- 28'1" to 35'5" useable ceiling height, 27 loading docks with crossdock configuration.
- Demising of space would be considered for right situation.

Details

Well-located industrial space available for lease in the Wausau Industrial Park. Employee area/restrooms in warehouse.

LEASE RATE

\$3.95-4.95/SF NNN

BUILDING SIZE

495,075 SF

OFFICE SIZE

9,800 SF

ZONING

HEAVY INDUSTRIAL

AVAILABLE

SPRING 2023

For more information:

Tony "T.J." Morice

Member Associate of the Society of Industrial and Office Realtors

715.218.2900 • TJM@naipfefferle.com

Greg Landwehr SIOR

920.740.5464 • GregL@naipfefferle.com

NO WARRANTY OR REPRESENTATION, EXPRESS OR IMPLIED, IS MADE AS TO THE ACCURACY OF THE INFORMATION CONTAINED HEREIN, AND THE SAME IS SUBMITTED SUBJECT TO ERRORS, OMISSIONS, CHANGE OF PRICE, RENTAL OR OTHER CONDITIONS, PRIOR SALE, LEASE OR FINANCING, OR WITHDRAWAL WITHOUT NOTICE, AND OF ANY SPECIAL LISTING CONDITIONS IMPOSED BY OUR PRINCIPALS NO WARRANTIES OR REPRESENTATIONS ARE MADE AS TO THE CONDITION OF THE PROPERTY OR ANY HAZARDS CONTAINED THEREIN ARE ANY TO BE IMPLIED.

327 N. 17th Avenue, Suite 303

Wausau, WI 54401

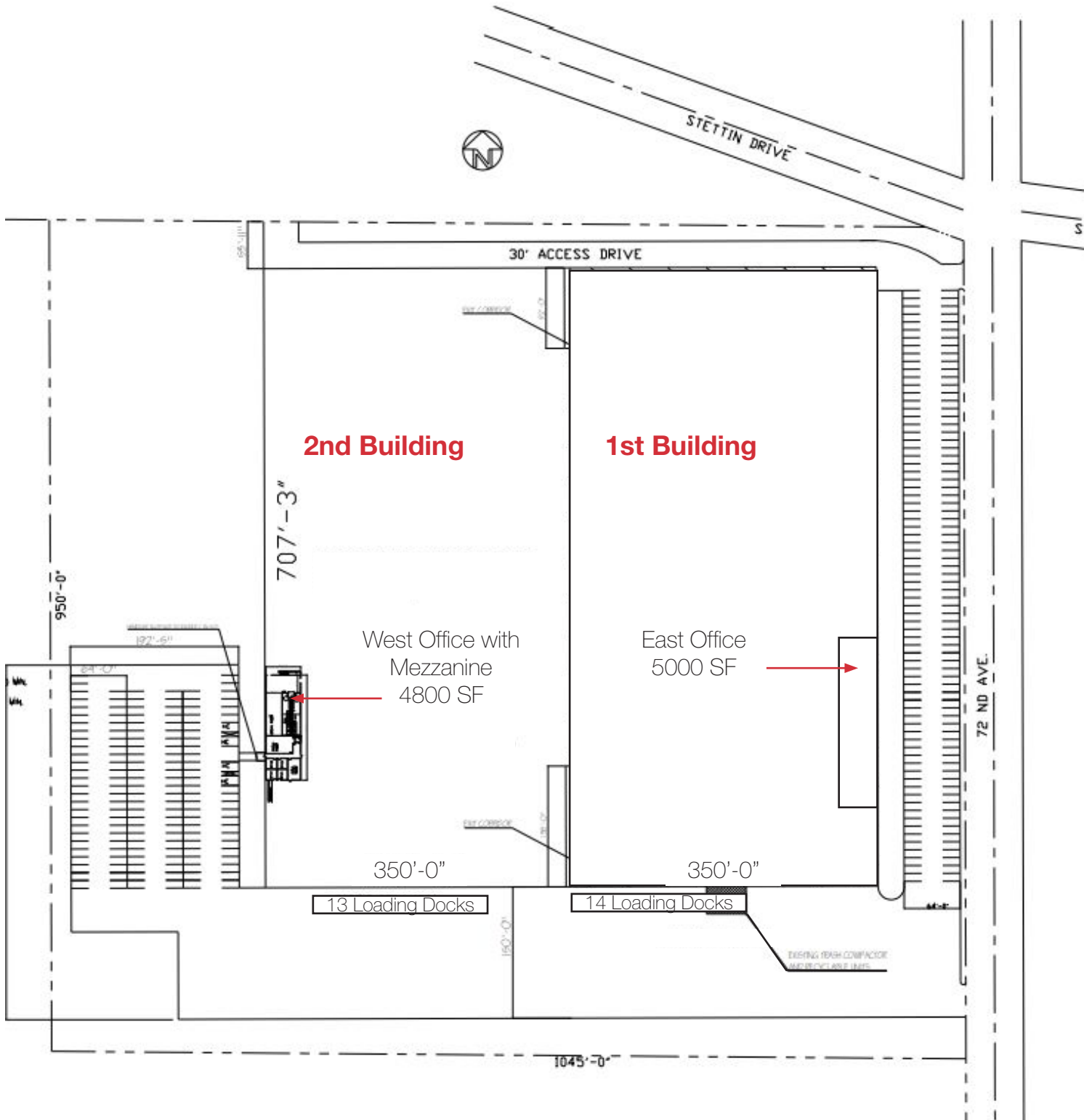
715.261.2922

naipfefferle.com

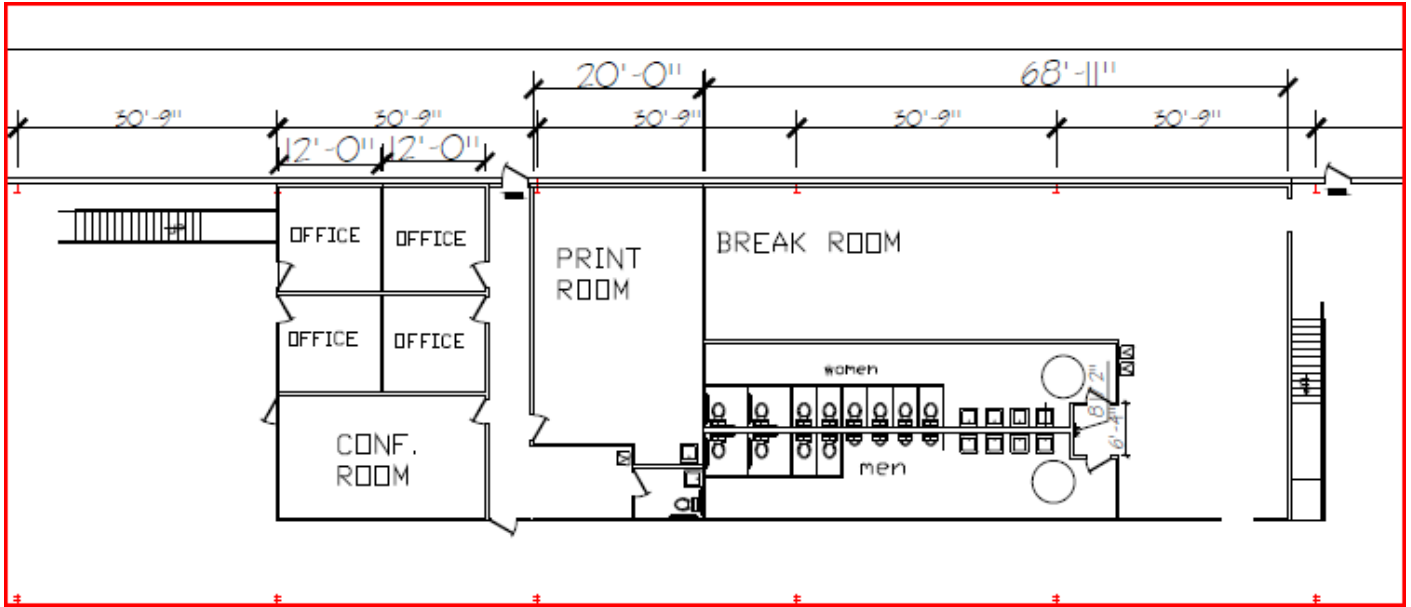
Additional Highlights:

- 1000 kVA transformer
- Column Spacing 30' 9" x 50'
- High pressure ESFR sprinkler heads
- Outside building height 32' at first column
- Loading dock lights with mechanical levelers
- T-8 lighting systems
- Two Generac backup systems
- 1600 AMP 3 phase power, 480 volt electric service
- Estimated \$1.25/SF for NNN costs

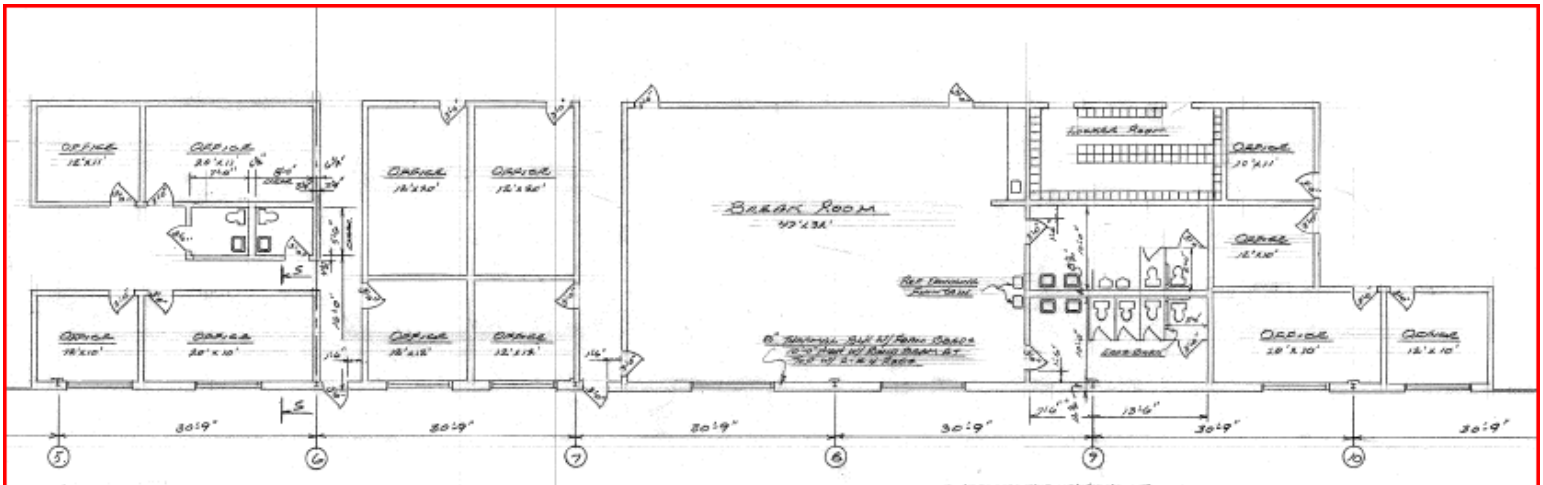




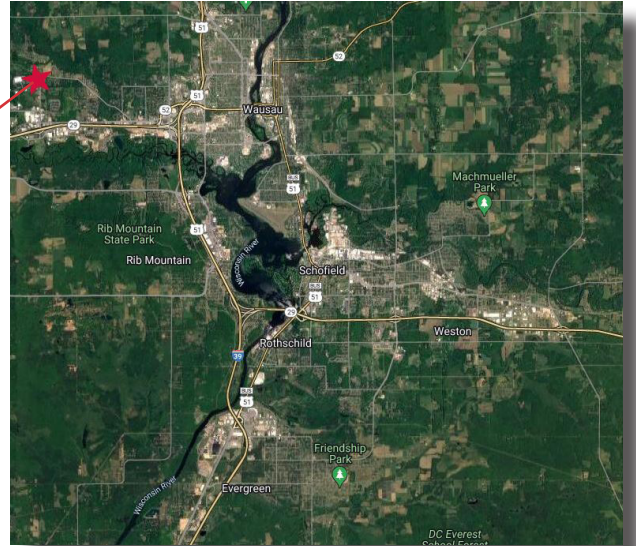
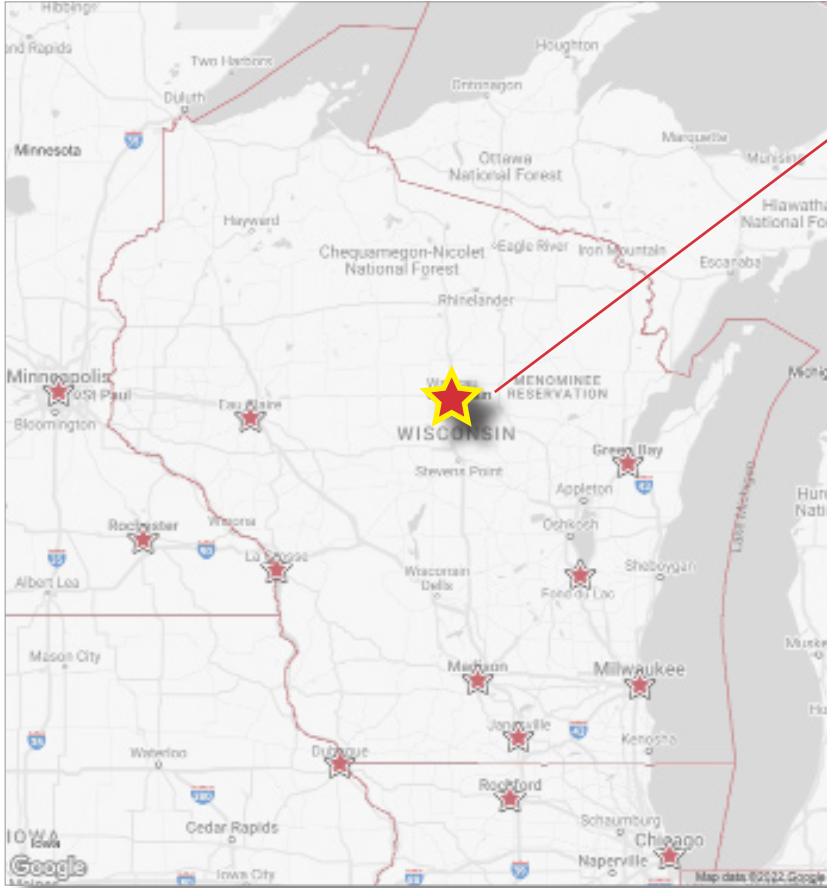
West Office with Mezzanine 4,800 SF



East Office 5,000 SF



Area Map



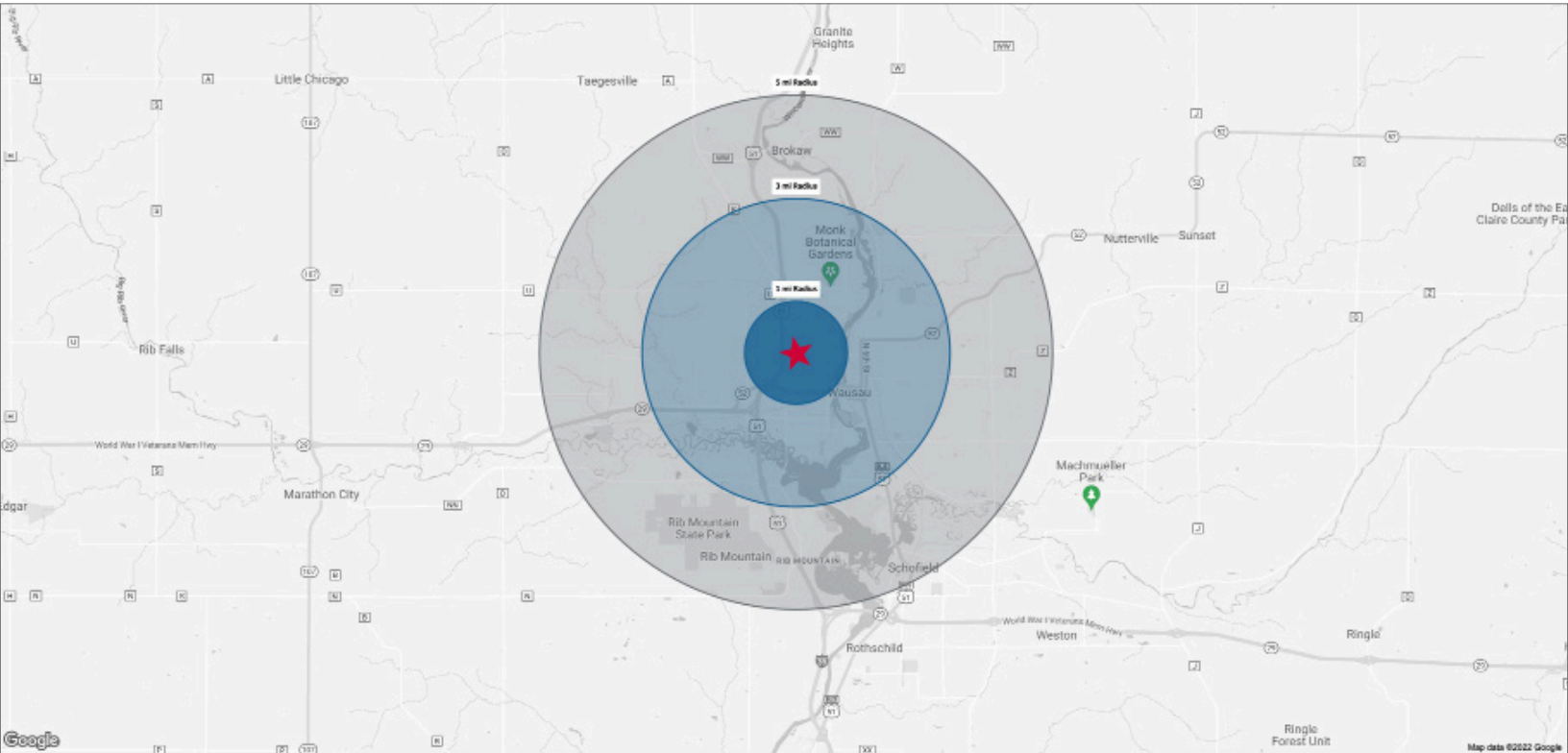
Location Advantages

- Wausau is the principal city and transportation hub of Northern and Central Wisconsin and the gateway to Wisconsin's Northwoods.
- Wausau anchors a growing combined metropolitan statistical area of over 308,000 people.
- Our expanding businesses remain strong with nationally - and globally - recognized firms in diverse fields including: building materials, advanced manufacturing, healthcare, information technology and insurance.
- Wausau is home to the largest hospital, largest performing arts theater, and largest public events in nearly 100 miles.

Driving Distance to Major Cities from Property

GREEN BAY	96 miles
EAU CLAIRE	99 miles
FOND DU LAC	123 miles
MADISON	143 miles
LA CROSSE	144 miles
MINNEAPOLIS	185 miles
DUBUQUE, IA	218 miles
CHICAGO, IL	281 miles

Area Demographics



Population (2022)

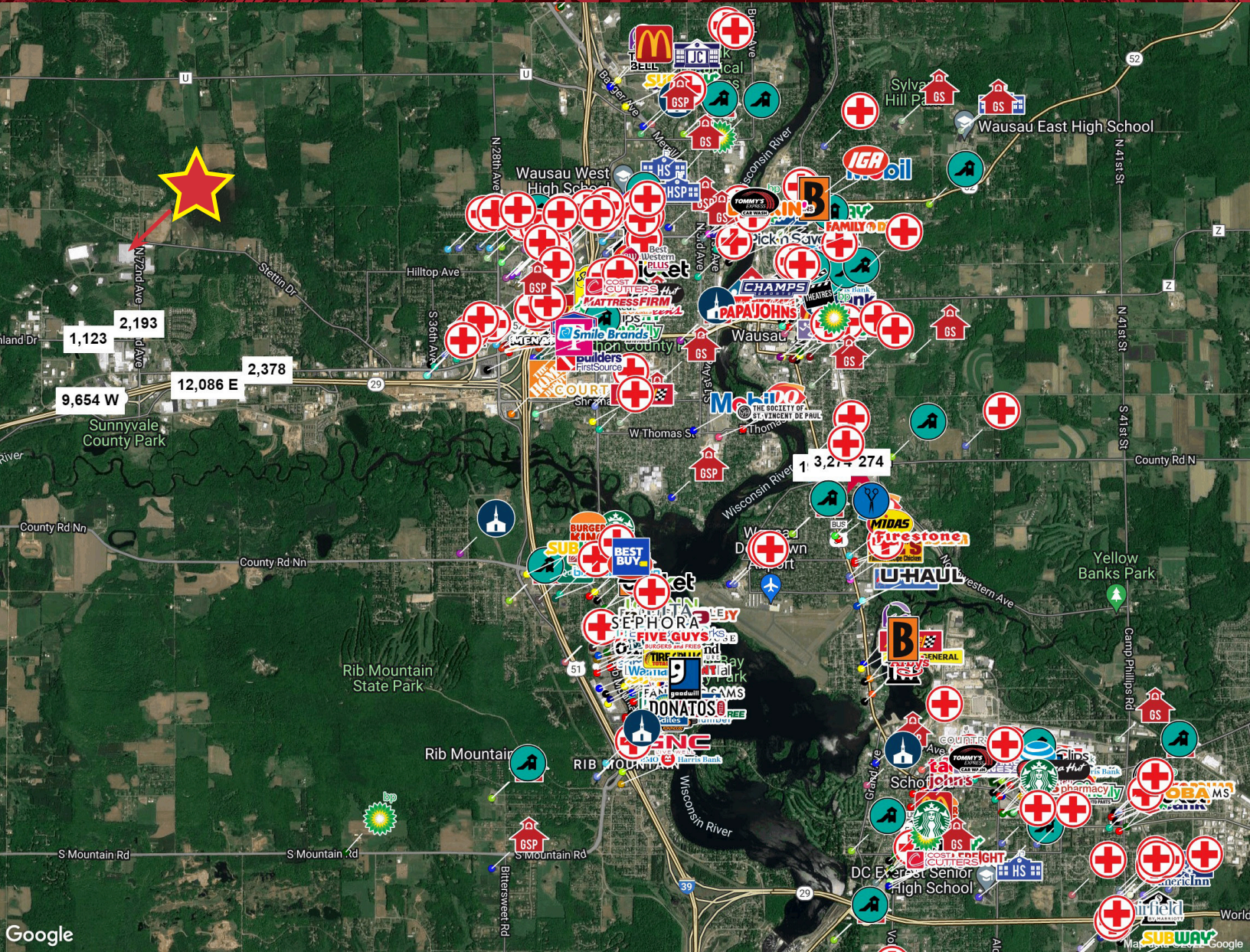
	1 MILE	3 MILES	5 MILES
ESTIMATED POPULATION	8,386	39,339	52,690
MEDIAN AGE	37.6	39.0	40.1

Households (2022)

	1 MILE	3 MILES	5 MILES
ESTIMATED HOUSEHOLDS	3,724	17,156	22,752
ESTIMATED AVERAGE HOUSEHOLD INCOME	\$49,542	\$70,416	\$76,565
ESTIMATED MEDIAN HOUSEHOLD INCOME	\$45,872	\$54,648	\$58,277

Total Annual Consumer Expenditure (2022)

	1 MILE	3 MILES	5 MILES
TOTAL RETAIL EXPENDITURE	\$76.25 M	\$442.29 M	\$621.96 M
ENTERTAINMENT EXPENDITURE	\$8.8 M	\$51.88 M	\$73.37 M
FOOD & BEVERAGE EXPENDITURE	\$24.13 M	\$139.18 M	\$195.02 M



2022 Demographics

	3 MILES	5 MILES	10 MILES
ESTIMATED POPULATION	6,525	27,912	83,704
ESTIMATED HOUSEHOLDS	3,015	12,133	35,285
EST AVERAGE HOUSEHOLD INCOME	\$107,890	\$77,857	\$82,092

Daily Traffic Counts (Vehicles per Day)

HWY 29	21,740
STEWART AVE	2,378
S 72ND AVE	2,193

STATE OF WISCONSIN BROKER DISCLOSURE



Wisconsin law requires all real estate licensees to give the following information about brokerage services to prospective customers.

Prior to negotiating on your behalf the Brokerage firm, or an agent associated with the firm, must provide you the following disclosure statement.

Disclosure to Customers

You are a customer of NAI Pfefferle (hereinafter Firm). The Firm is either an agent of another party in the transaction or a subagent of another firm that is the agent of another party in the transaction. A broker or a salesperson acting on behalf of the Firm may provide brokerage services to you. Whenever the Firm is providing brokerage services to you, the Firm and its brokers and salespersons (hereinafter Agents) owe you, the customer, the following duties:

- The duty to provide brokerage services to you fairly and honestly.
- The duty to exercise reasonable skill and care in providing brokerage services to you.
- The duty to provide you with accurate information about market conditions within a reasonable time if you request it, unless disclosure of the information is prohibited by law.
- The duty to disclose to you in writing certain Material Adverse Facts about a Property, unless disclosure of the information is prohibited by law.
- The duty to protect your confidentiality. Unless the law requires it, the Firm and its Agents will not disclose your confidential information or the confidential information of other parties.
- The duty to safeguard trust funds and other property held by the Firm or its Agents.
- The duty, when negotiating, to present contract proposals in an objective and unbiased manner and disclose the advantages and disadvantages of the proposals.

Please review this information carefully. An Agent of the Firm can answer your questions about brokerage services, but if you need legal advice, tax advice, or a professional home inspection, contact an attorney, tax advisor, or home inspector. This disclosure is required by section 452.135 of the Wisconsin statutes and is for information only. It is a plain-language summary of the duties owed to a customer under section 452.133(1) of the Wisconsin statutes.

Confidentiality Notice to Customers

The Firm and its Agents will keep confidential any information given to the Firm or its Agents in confidence, or any information obtained by the Firm or its Agents that a reasonable person would want to be kept confidential, unless the information must be disclosed by law or you authorize the Firm to disclose particular information. The Firm and its Agents shall continue to keep the information confidential after the Firm is no longer providing brokerage services to you.

No representation is made as to the legal validity of any provision or the adequacy of any provision in any specific transaction.

The following information is required to be disclosed by law:

1. Material Adverse Facts, as defined in section 452.01(5g) of the Wisconsin Statutes (see definition below).
2. Any facts known by the Firm or its Agents that contradict any information included in a written inspection report on the property or real estate that is the subject of the transaction.

To ensure that the Firm and its Agents are aware of what specific information you consider confidential, you may list that information below or provide that information to the Firm or its Agents by other means. At a later time, you may also provide the Firm or its Agents with other information you consider to be confidential.

CONFIDENTIAL INFORMATION

NON-CONFIDENTIAL INFORMATION

(the following information may be disclosed to the Firm and its Agents)

(Insert information you authorize to be disclosed, such as financial qualification information.)

Definition of Material Adverse Facts

A “Material Adverse Fact” is defined in Wis. Stat. 452.01(5g) as an Adverse Fact that a party indicates is of such significance, or that is generally recognized by a competent licensee as being of such significance to a reasonable party, that it affects or would affect the party’s decision to enter into a contract or agreement concerning a transaction or affects or would affect the party’s decision about the terms of such a contract or agreement.

An “Adverse Fact” is defined in Wis. Stat. 452.01(1e) as a condition or occurrence that a competent licensee generally recognizes will significantly and adversely affect the value of the property, significantly reduce the structural integrity of improvements to real estate, or present a significant health risk to occupants of the property; or information that indicates that a party to a transaction is not able to or does not intend to meet his or her obligations under a contract or agreement made concerning the transaction.

Notice About Sex Offender Registry

You may obtain information about the sex offender registry and persons registered with the registry by contacting the Wisconsin Department of Corrections on the Internet at <http://www.doc.wi.gov> or by telephone at 608-240-5830.