

6442 LONG POINT

HOUSTON, TX 77055

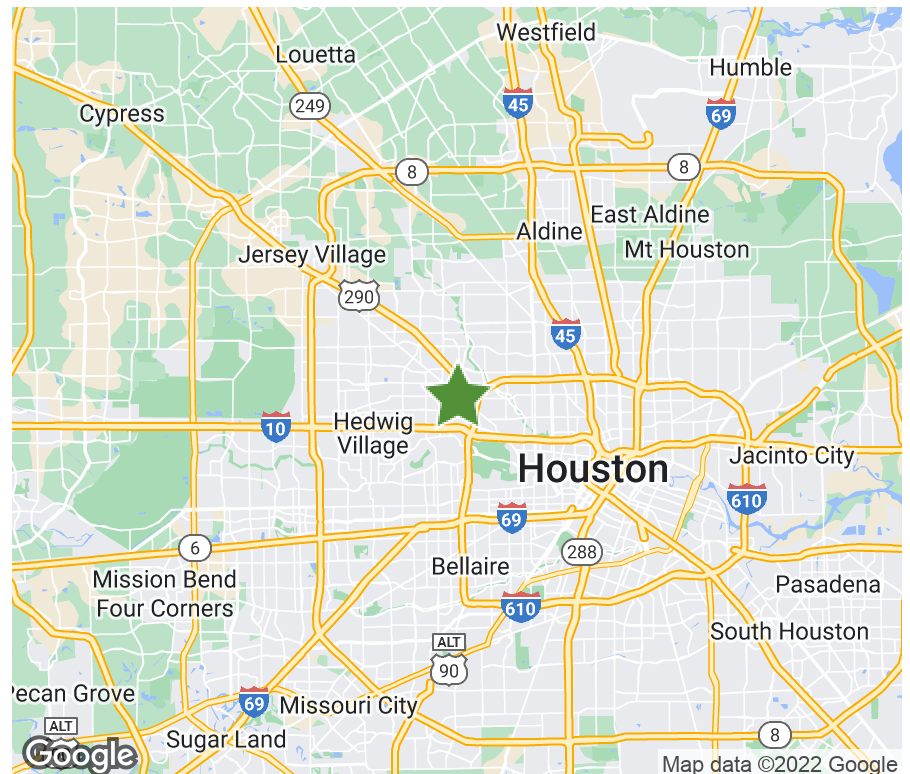


12,201 SF | FOR LEASE

The property 6400 Long Point is a well located warehouse facility in Houston's Northwest submarket. This building is a dock high, front load facility in close proximity to the 610 Loop, Highway 290, Interstate-10 and Hempstead Highway.

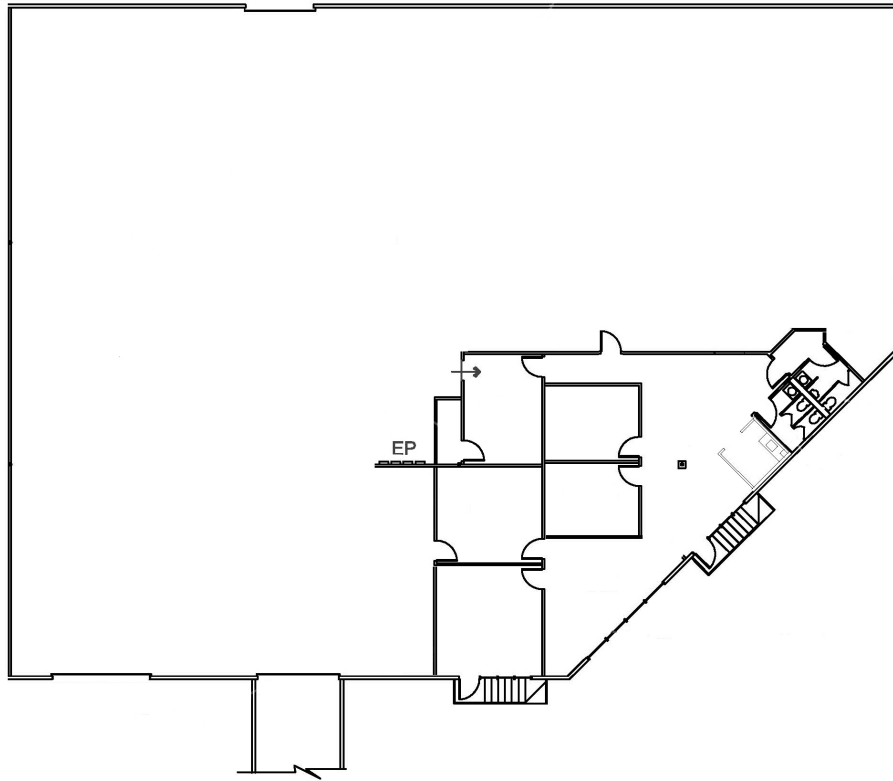
PROPERTY SPECIFICATIONS

Available Space:	12,201 SF
Office:	2,335 SF
Submarket:	Northwest Houston
Ceiling Height:	18
Dock High Doors:	2
Ramps:	1
Sprinkler:	NonESFR



6442 LONG POINT

12,201 SF | FOR LEASE



Suite 6442
12,201 S.F. Total

BROKER CONTACT

David Munson, SIOR

Boyd Commercial
713.599.3438
dmunson@boydcommercial.net

Greg Barra, SIOR

Boyd Commercial
713.599.3406
gbarra@boydcommercial.net



OWNER CONTACT

Brad Kluever

Regional Director
312.344.4347
bkluever@firstindustrial.com



1225 North Loop West, Suite 700

Houston, TX 77008

713.681.0885

All information furnished regarding the property for sale, rental or financing is obtained from sources deemed reliable. No representation is made to the accuracy thereof and is submitted subject to errors, omissions, change of price rental or other conditions, prior sale, lease, or financing, or withdrawal without notice. First Industrial Realty Trust, Inc. represents the Seller in this transaction and as such owes all duties and obligations thereto.