



6690 WADSWORTH BLVD
UNIT B
Arvada, Colorado 80003



PROPERTY FEATURES

- Close Proximity to Arvada Center for the Arts
- Professionally Maintained Property
- Monument Signage Available
- On-Building Signage
- Above Standard Office Finishes
- Break Area
- Abundant Nearby Amenities

PROPERTY SPECIFICATIONS

Building Size:	3,457 SF
Lease Rate:	\$19.00 FSG
Available Unit:	B
Available SF:	1,222 SF
Lease Term:	3 - 5 Years
Year Built:	1962
Ceiling Height:	10'
Stories:	One
Parking:	17 Spaces

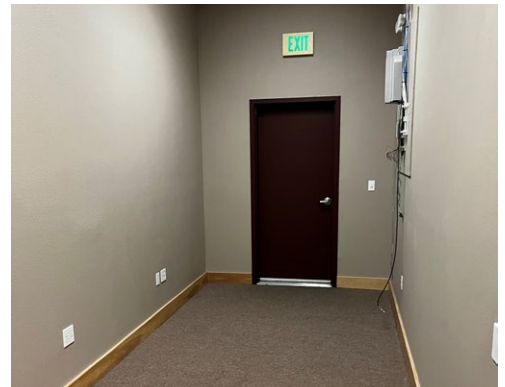
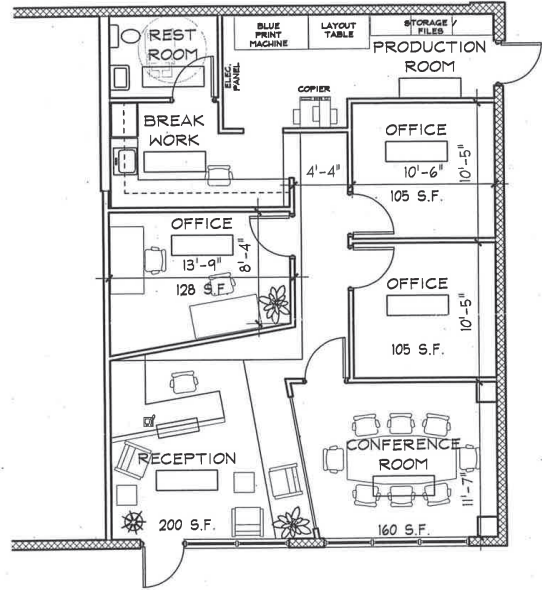
FOR MORE INFORMATION CONTACT:

TIM P. ROGERS

trogers@gcgcre.com | 720.476.5225

T. BLAKE ROGERS

tblakerogers@gcgcre.com | 720.476.5227



FOR MORE INFORMATION CONTACT:

TIM P. ROGERS
trogers@gcgcre.com | 720.476.5225

T.BLAKE ROGERS
tblakerogers@gcgcre.com | 720.476.5227

GENESEE COMMERCIAL GROUP, LLC | 710 KIPLING STREET, SUITE 403 | LAKEWOOD, COLORADO 80215 | WWW.GCGCRE.COM

No warranty or representation is made as to the accuracy of the foregoing information. Terms of sale or lease and availability are subject to change or withdrawal without notice.