

OFFICE / RETAIL PROPERTY FOR LEASE

## Ground-level Office/Retail Suites in Heart of Downtown Northville

150 MAINCENTRE  
NORTHVILLE, MI 48167



- 2,270 & 4,125 office/retail suites available
- Great location in heart of downtown Northville
- Tenant improvement allowance available
- Excellent foot traffic
- Free parking deck adjacent to building



**P.A. COMMERCIAL**  
Corporate & Investment Real Estate



### OFFERING SUMMARY

Available SF:	2,270 - 4,125 SF
Building Size:	131,344 SF
Lease Rate:	\$15.00 - 18.00 SF/yr (NNN)
Year Built:	1988
Market:	Detroit
Submarket:	Northville
Traffic Count:	7,444 on N Center St

### PROPERTY OVERVIEW

150 Maincentre is a beautiful mixed-use building in the center of busy downtown Northville. There are currently two office/retail suites available for lease on the ground-level. Suite 100 is a 4,125 SF suite that features 16 private offices, a lobby, a conference room, and private restrooms. Suite 134 is a 2,270 SF suite that features reception, waiting area, seven private offices, a conference room, IT room, printing room and a private restroom. These suites can easily be converted to retail for the right tenant. The building also features a free parking deck adjacent to the development.

### LOCATION OVERVIEW

Located in the heart of historic downtown Northville, the location does not get any better: located along Main Street and Center Street, with near constant foot traffic and high visibility. Great location that is home to popular restaurants and boutique shops. Just a short walk to Northville Downs Horse Racing Track. MainCentre is a short drive from Plymouth, Novi and Farmington Hills, with easy access to I-96 and I-275.

**MATTHEW J. SCHIFFMAN** CEO/Managing Member  
matt@pacommercial.com (P) 248.281.9907 (C) 248.943.6449

**MIKE GUNN** Associate  
mike@pacommercial.com (P) 248.331.0202 (C) 248.924.7499



**P.A. COMMERCIAL**  
Corporate & Investment Real Estate

26555 Evergreen Road, Suite 1500 • Southfield, MI 48076

150 MAINCENTRE, NORTHVILLE, MI

// AVAILABLE SPACES

LEASE TYPE | NNN

TOTAL SPACE | 2,270 - 4,125 SF

LEASE TERM | Negotiable

LEASE RATE | \$15.00 - \$18.00 SF/yr



SUITE	TENANT	SIZE (SF)	LEASE TYPE	LEASE RATE
150 Maincentre, Suite 100	Available	4,125 SF	NNN	\$15.00 SF/yr
150 Maincentre, Suite 134	Available	2,270 SF	NNN	\$18.00 SF/yr

**MATTHEW J. SCHIFFMAN** CEO/Managing Member  
 matt@pacommercial.com (P) 248.281.9907 (C) 248.943.6449

**MIKE GUNN** Associate  
 mike@pacommercial.com (P) 248.331.0202 (C) 248.924.7499



**P.A. COMMERCIAL**  
 Corporate & Investment Real Estate

26555 Evergreen Road, Suite 1500 • Southfield, MI 48076



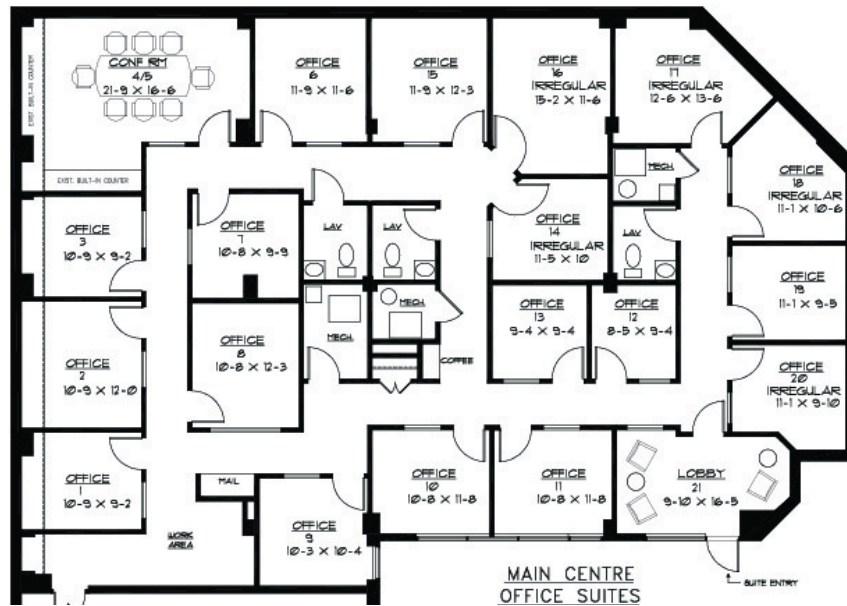
**MATTHEW J. SCHIFFMAN** CEO/Managing Member  
matt@pacommercial.com (P) 248.281.9907 (C) 248.943.6449

**MIKE GUNN** Associate  
mike@pacommercial.com (P) 248.331.0202 (C) 248.924.7499

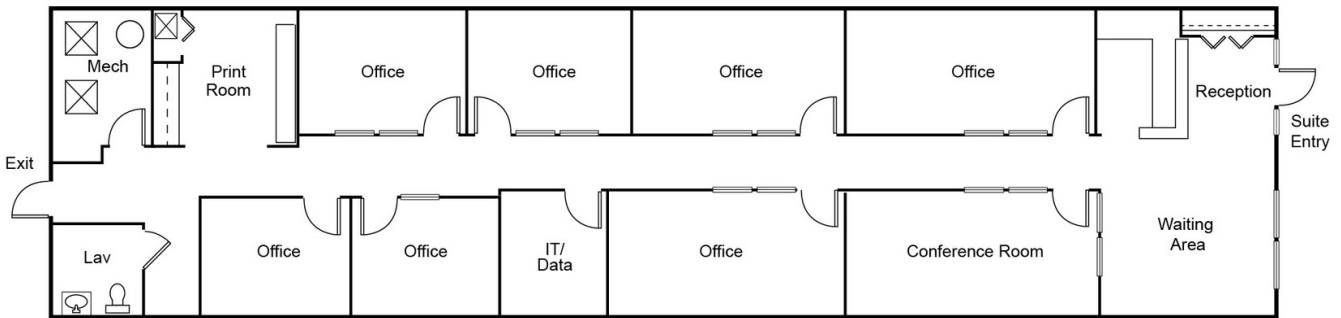


**P.A. COMMERCIAL**  
Corporate & Investment Real Estate

26555 Evergreen Road, Suite 1500 • Southfield, MI 48076



1 SUITE 100 | 4,125 SF



2 SUITE 134 | 2,270 SF

**MATTHEW J. SCHIFFMAN** CEO/Managing Member  
 matt@pacommercial.com (P) 248.281.9907 (C) 248.943.6449

**MIKE GUNN** Associate  
 mike@pacommercial.com (P) 248.331.0202 (C) 248.924.7499



26555 Evergreen Road, Suite 1500 • Southfield, MI 48076

We obtained the information above from sources we believe to be reliable. However, we have not verified its accuracy and make no guarantee, warranty or representation about it. It is submitted subject to the possibility of errors, omissions, change of price, rental or other conditions, prior sale, lease or financing, or withdrawal without notice. We include projections, opinions, assumptions or estimates for example only, and they may not represent current or future performance of the property. You and your tax and legal advisors should conduct your own investigation of the property and transaction.



**MATTHEW J. SCHIFFMAN** CEO/Managing Member  
matt@pacommercial.com (P) 248.281.9907 (C) 248.943.6449

**MIKE GUNN** Associate  
mike@pacommercial.com (P) 248.331.0202 (C) 248.924.7499



**P.A. COMMERCIAL**  
Corporate & Investment Real Estate

26555 Evergreen Road, Suite 1500 • Southfield, MI 48076

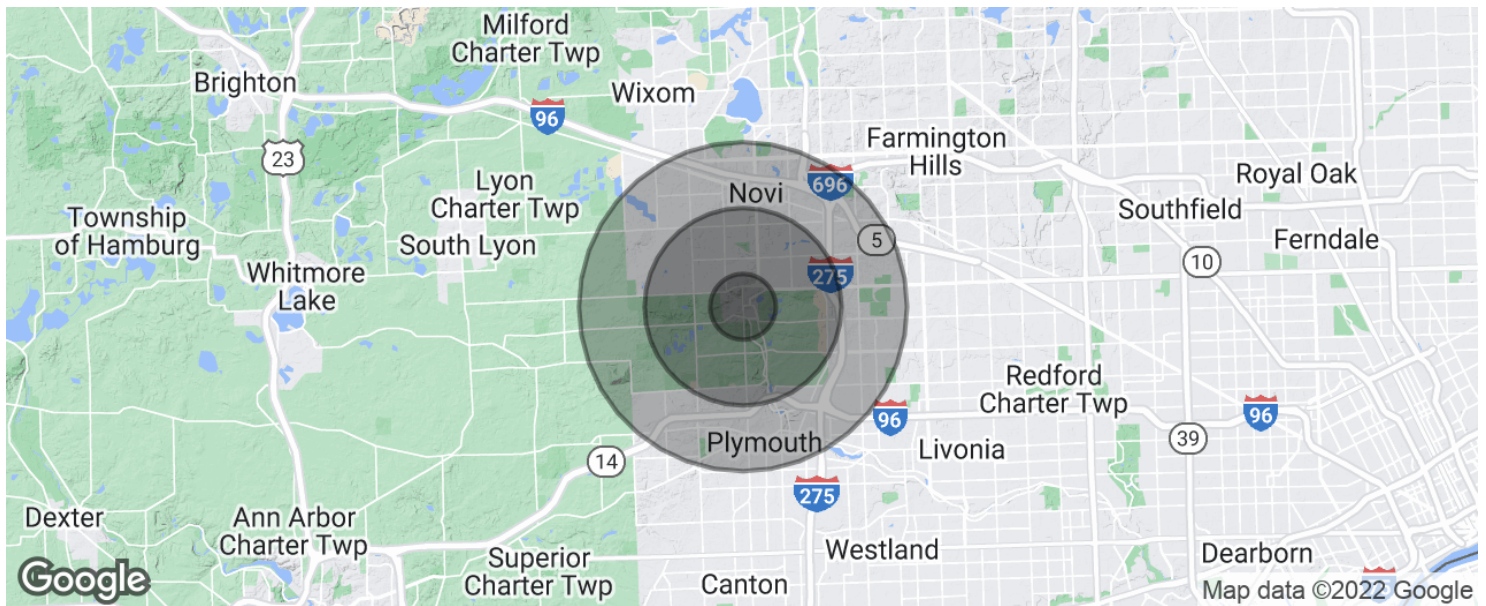


**MATTHEW J. SCHIFFMAN** CEO/Managing Member  
matt@pacommercial.com (P) 248.281.9907 (C) 248.943.6449

**MIKE GUNN** Associate  
mike@pacommercial.com (P) 248.331.0202 (C) 248.924.7499



26555 Evergreen Road, Suite 1500 • Southfield, MI 48076

**POPULATION**

	<b>1 MILE</b>	<b>3 MILES</b>	<b>5 MILES</b>
Total population	7,837	55,210	142,004
Median age	44.1	41.6	41.3
Median age (Male)	41.1	39.9	39.8
Median age (Female)	46.0	43.0	42.7

**HOUSEHOLDS & INCOME**

	<b>1 MILE</b>	<b>3 MILES</b>	<b>5 MILES</b>
Total households	3,346	21,480	55,396
# of persons per HH	2.3	2.6	2.6
Average HH income	\$111,889	\$121,502	\$111,707
Average house value	\$349,520	\$362,490	\$318,347

\* Demographic data derived from 2020 ACS - US Census

**MATTHEW J. SCHIFFMAN** CEO/Managing Member  
matt@pacommercial.com (P) 248.281.9907 (C) 248.943.6449

**MIKE GUNN** Associate  
mike@pacommercial.com (P) 248.331.0202 (C) 248.924.7499



**P.A. COMMERCIAL**  
Corporate & Investment Real Estate

26555 Evergreen Road, Suite 1500 • Southfield, MI 48076