

## RETAIL PROPERTY FOR LEASE

# New Construction: Exceptional Mack Avenue Street Retail

18155 MACK AVE  
DETROIT , MI 48224



Convenient New Retail Space for the Grosse  
Pointe Communities

5,000-10,000 SF Available

Coming late 2023

124,324 Population within a 3 Mile Radius



**P.A. COMMERCIAL**  
Corporate & Investment Real Estate



**OFFERING SUMMARY**

Available SF:	5,000 - 10,000 SF
Building Size:	101,000 SF
Lease Rate:	\$20.00 SF/yr (NNN)
Zoning:	Retail
Construction Completion:	Late 2023 (est.)
Market:	Detroit
Submarket:	The Pointes

**PROPERTY OVERVIEW**

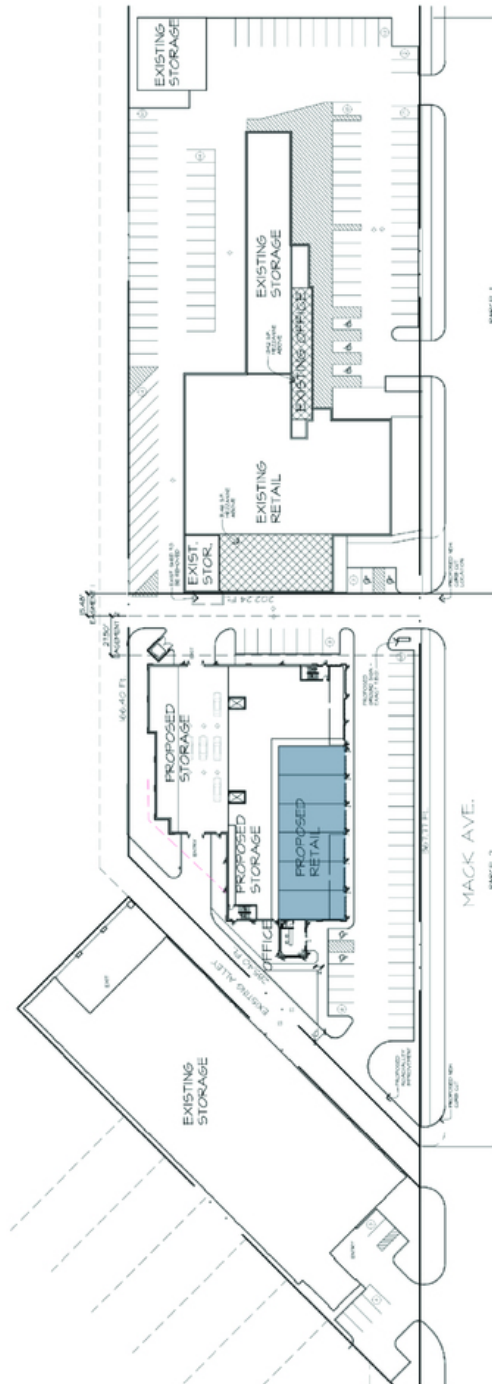
Great opportunity to lease 5,000-10,000 SF of retail space in the new EZ Storage building coming late 2023 on Mack Avenue. The property, which is located just north of the new Starbucks and south of McDonald’s restaurant next to Ace Hardware, offers excellent exposure and parking in their off-street lot, as well as convenient street parking on Mack Avenue.

**LOCATION OVERVIEW**

Excellent location on Mack just south of Moross.

**PROPERTY HIGHLIGHTS**

- Convenient New Retail Space for the Grosse Pointe Communities
- 5,000-10,000 sf Available
- Coming late 2023
- Great Off-Street Parking as well as on Mack Avenue
- 124,324 Population within a 3 Mile Radius



**P.A. COMMERCIAL**  
Corporate & Investment Real Estate

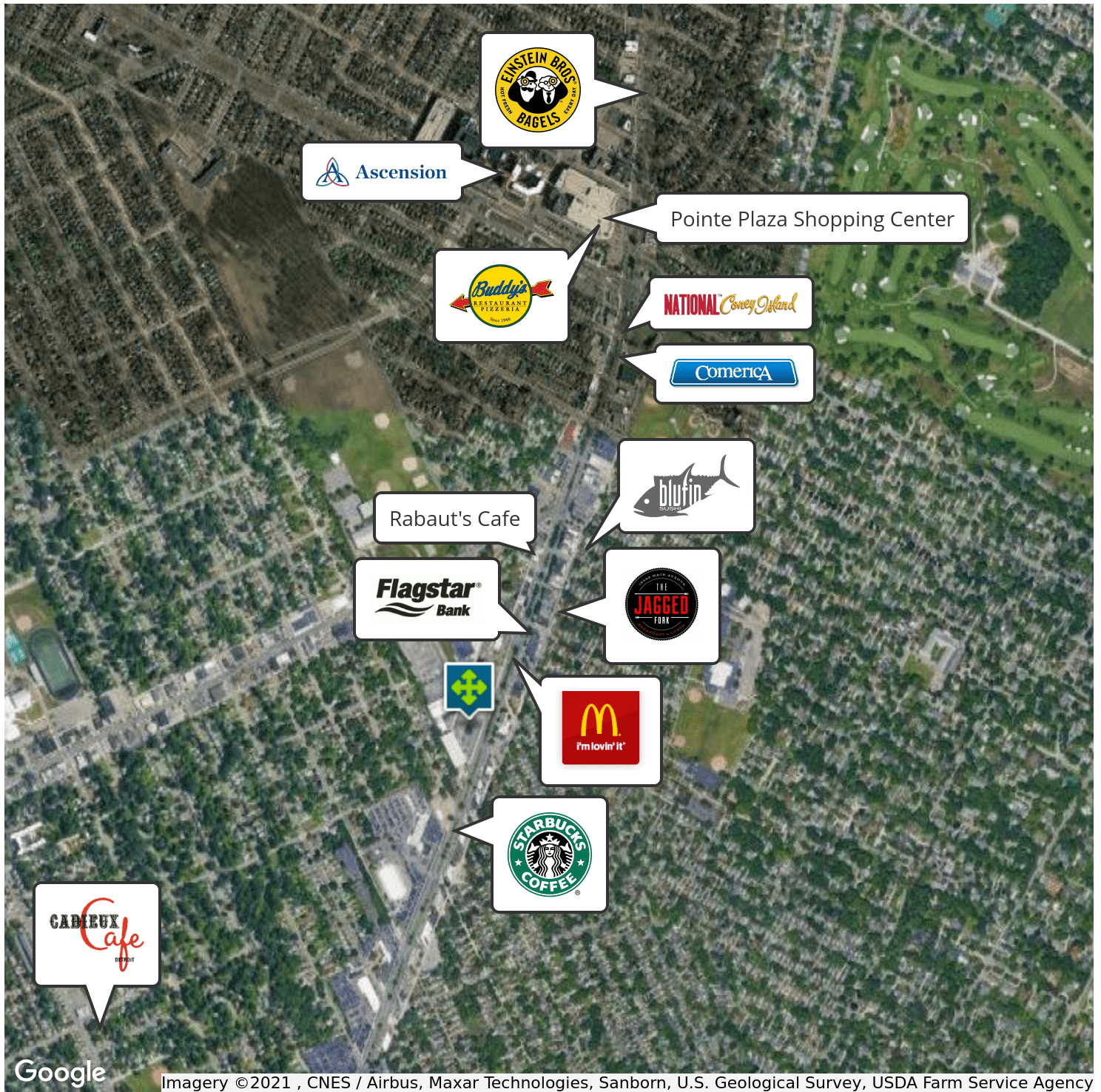
26555 Evergreen Road, Suite 1500 • Southfield, MI 48076

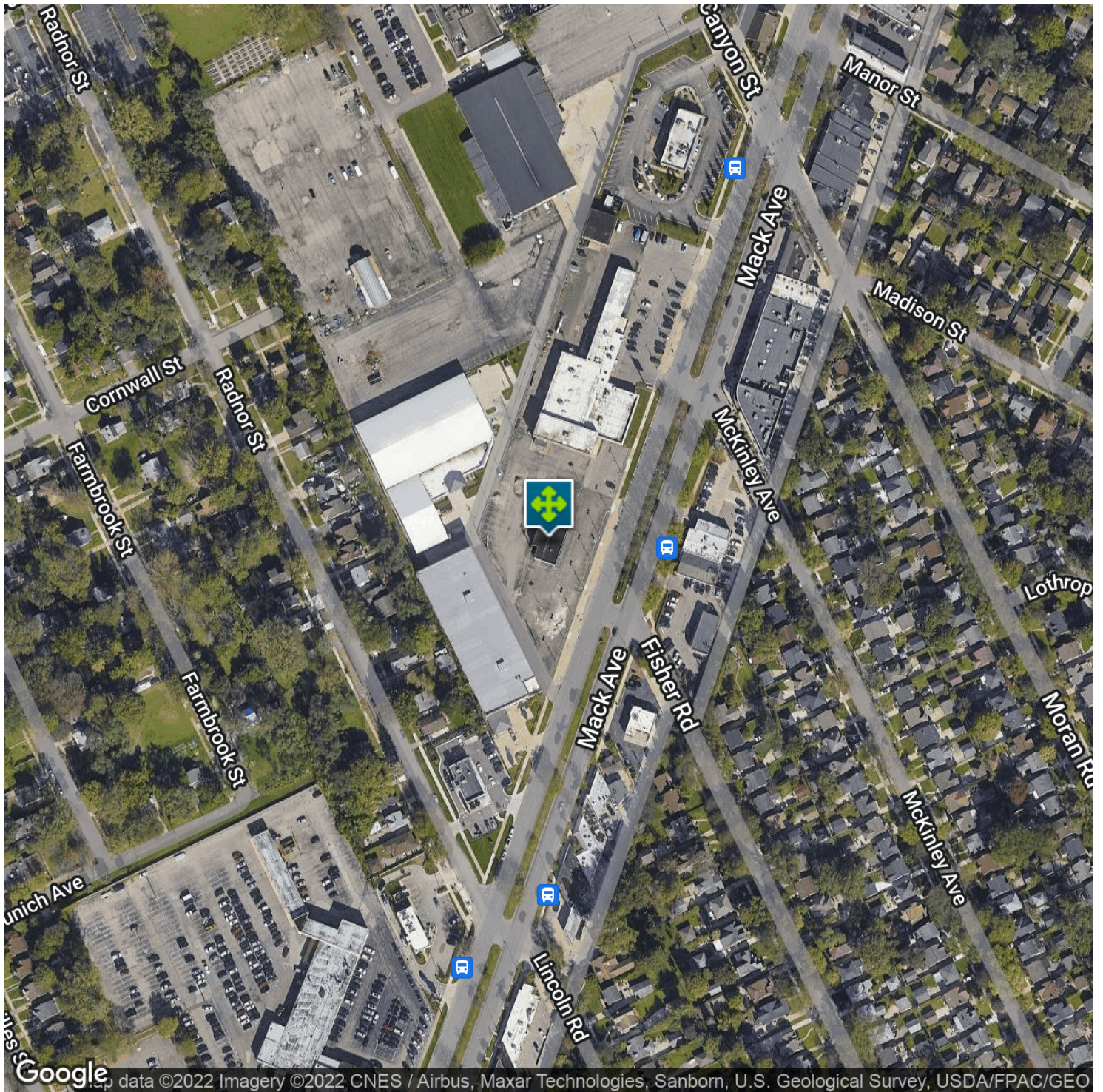
FOR MORE INFORMATION CONTACT:

**JOHN E. DE WALD, CPA** Principal

john@pacommercial.com (P) 248.358.0100 x112 (C) 313.510.3777

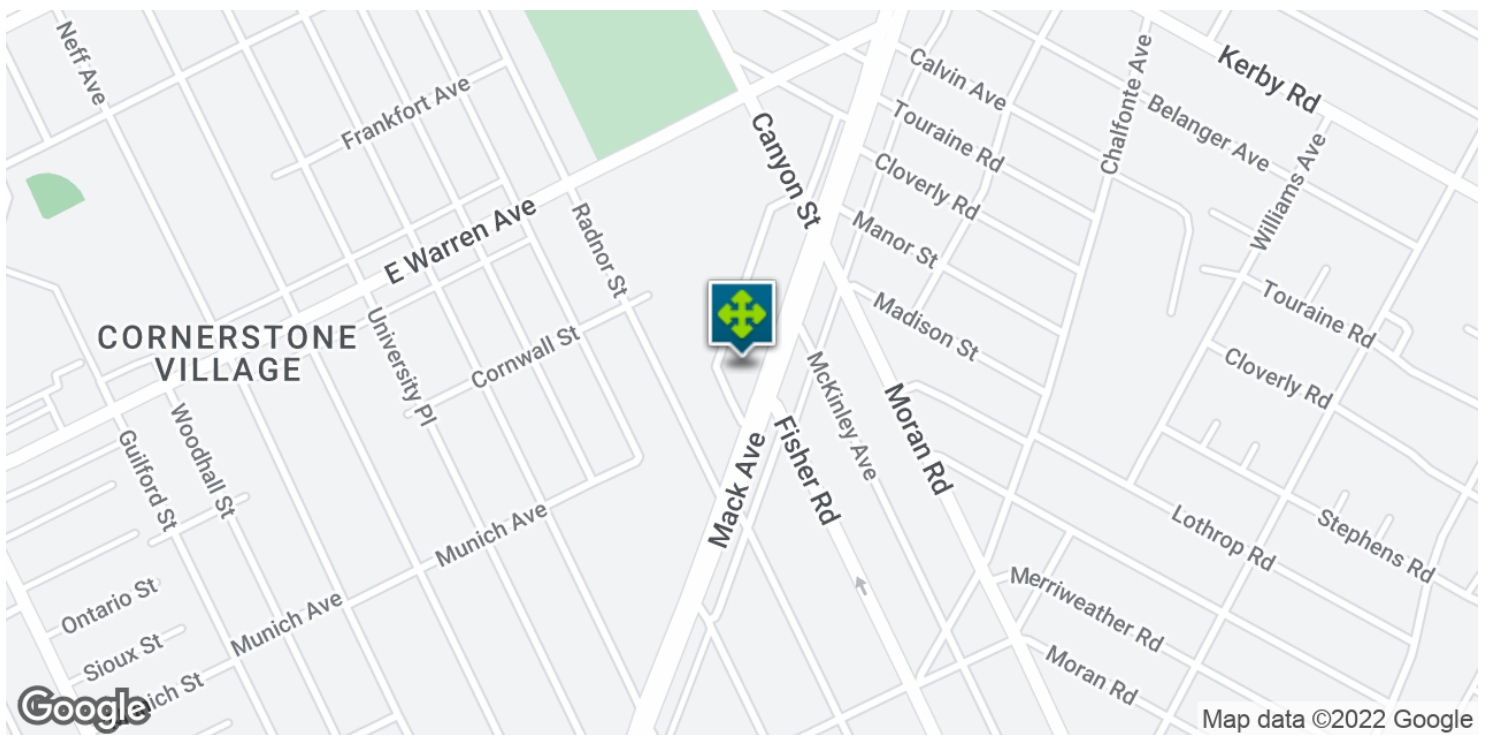
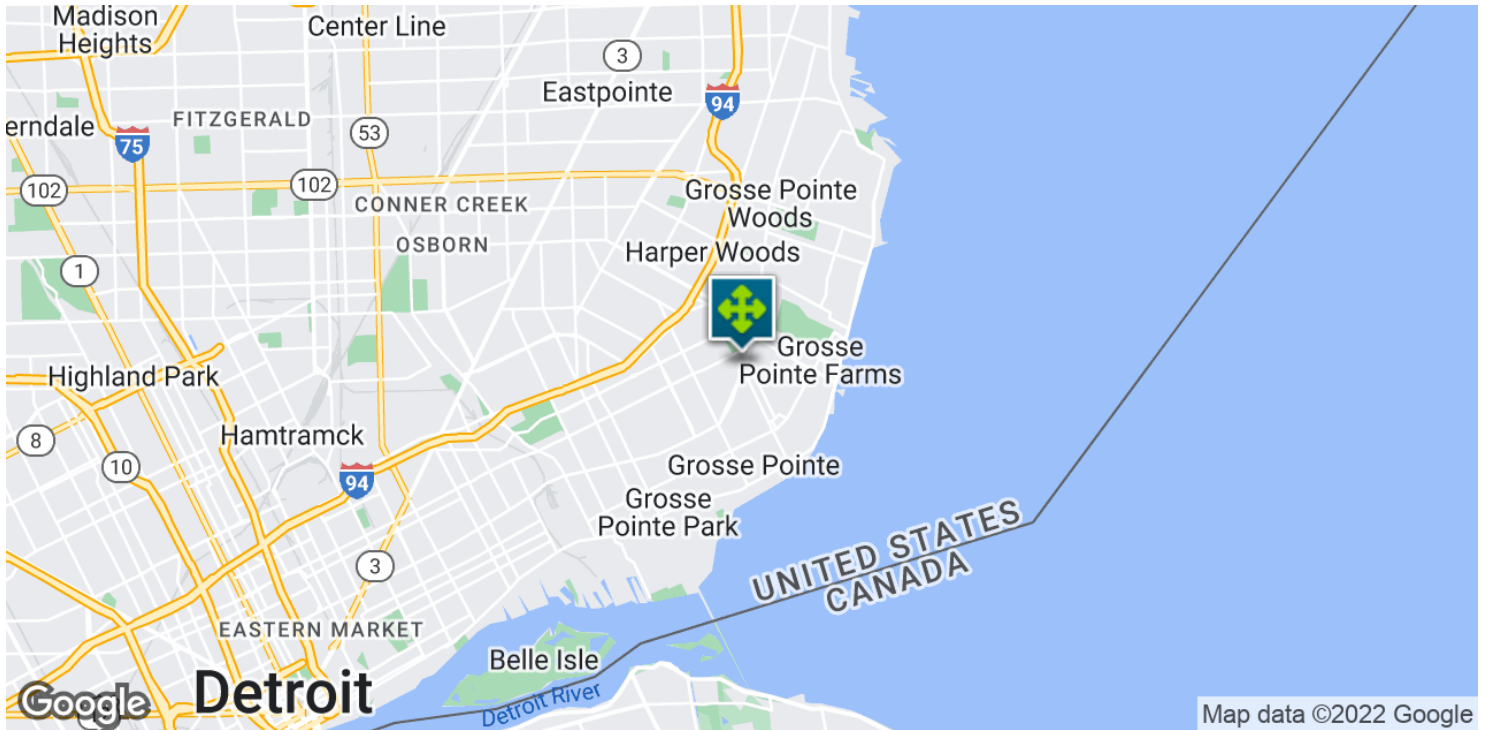
We obtained the information above from sources we believe to be reliable. However, we have not verified its accuracy and make no guarantee, warranty or representation about it. It is submitted subject to the possibility of errors, omissions, change of price, rental or other conditions, prior sale, lease or financing, or withdrawal without notice. We include projections, opinions, assumptions or estimates for example only, and they may not represent current or future performance of the property. You and your tax and legal advisors should conduct your own investigation of the property and transaction.

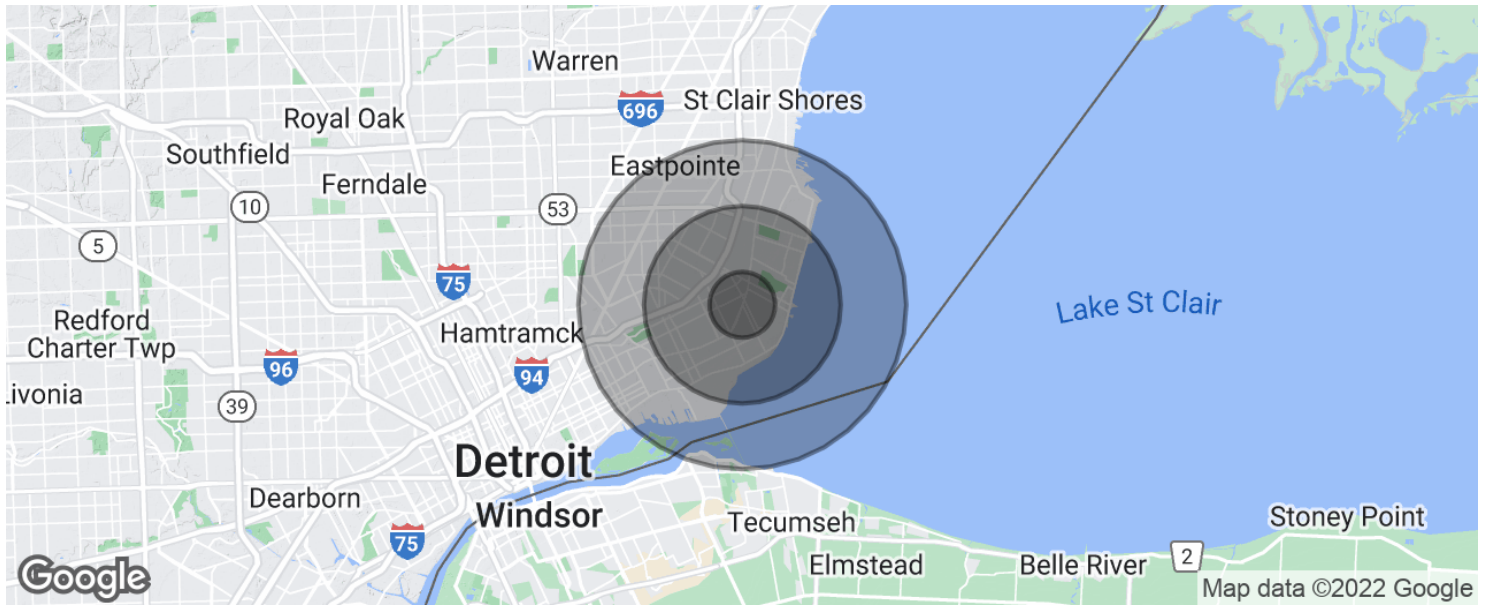




18155 MACK AVE, DETROIT , MI

// LOCATION MAPS





**POPULATION**

	<b>1 MILE</b>	<b>3 MILES</b>	<b>5 MILES</b>
Total population	16,666	124,324	268,359
Median age	39.7	36.3	35.4
Median age (Male)	39.2	33.7	33.2
Median age (Female)	40.6	38.6	37.2

**HOUSEHOLDS & INCOME**

	<b>1 MILE</b>	<b>3 MILES</b>	<b>5 MILES</b>
Total households	5,781	44,159	97,267
# of persons per HH	2.9	2.8	2.8
Average HH income	\$85,897	\$77,085	\$62,569
Average house value	\$228,636	\$232,714	\$184,221

\* Demographic data derived from 2020 ACS - US Census