

RETAIL SPACE FOR LEASE

UDF CO-TENANT

381 E Main Street, Wilmington, OH 45177



Molly Hoffman
mhoffman@lee-associates.com
D 513.588.1843

LEE & ASSOCIATES
COMMERCIAL REAL ESTATE SERVICES

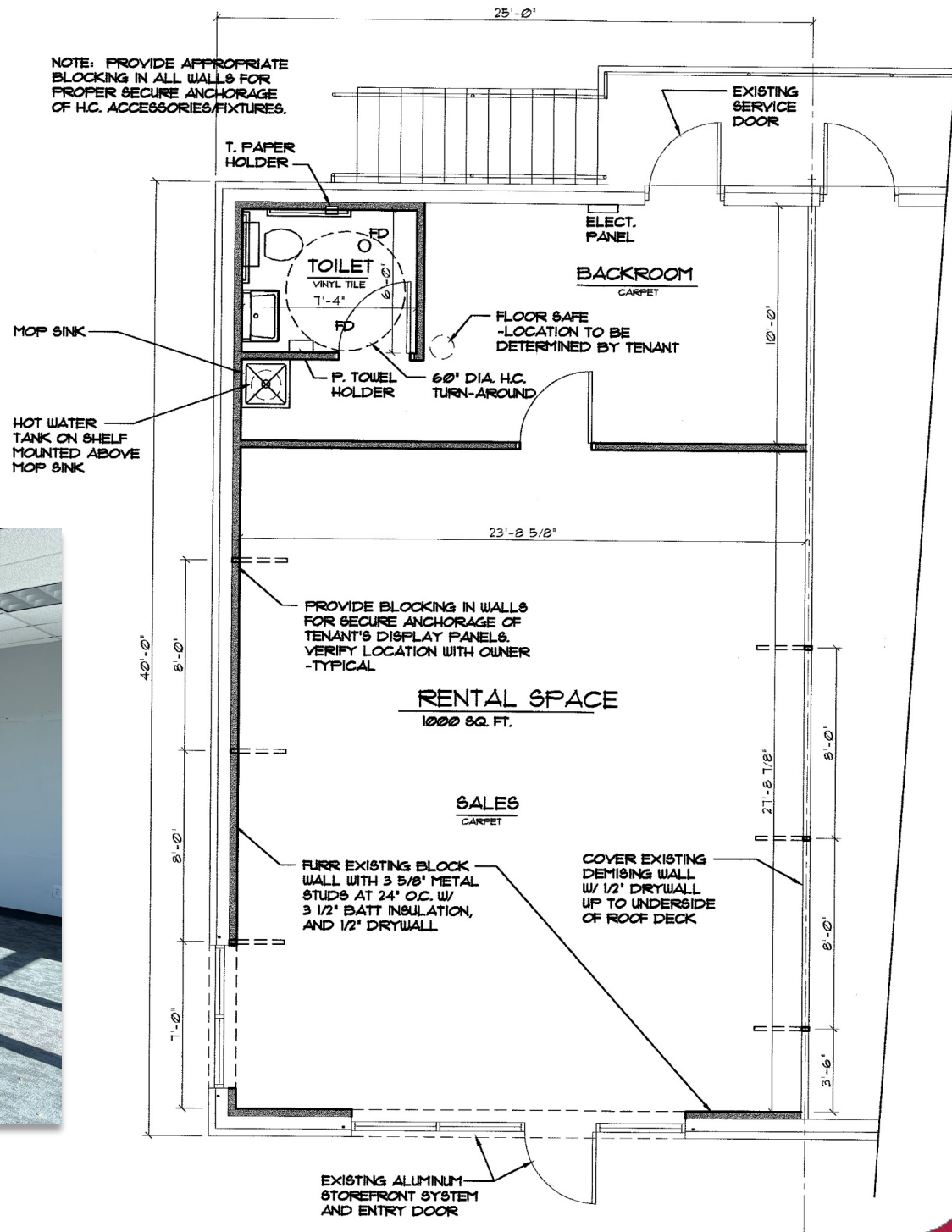
All information furnished regarding property for sale, rental or financing is from sources deemed reliable, but no warranty or representation is made to the accuracy thereof and same is submitted to errors, omissions, change of price, rental or other conditions prior to sale, lease or financing or withdrawal without notice. No liability of any kind is to be imposed on the broker herein.

RETAIL SPACE FOR LEASE

UDF CO-TENANT

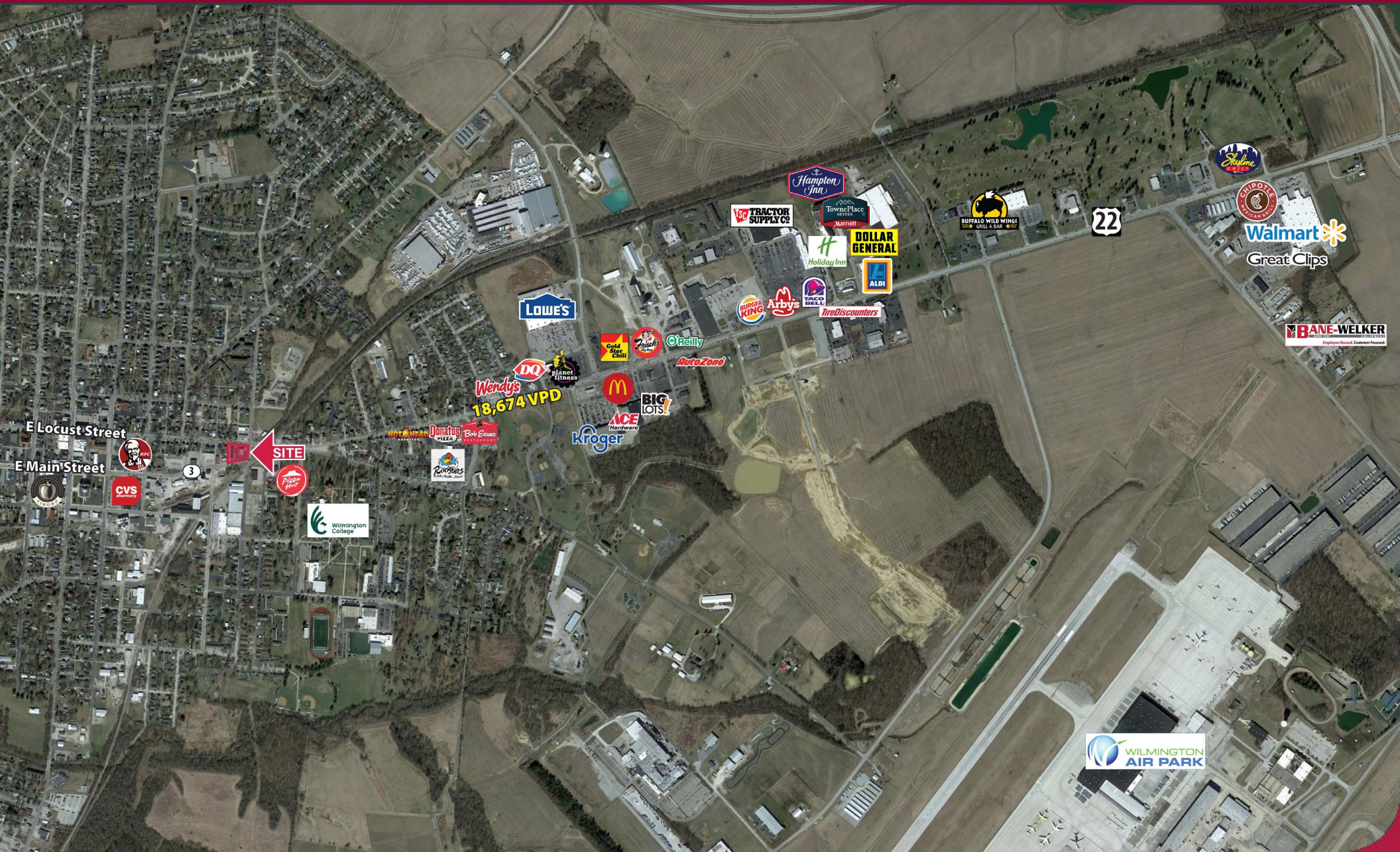
LEASE RATE: \$18.50 Modified Gross
SPACE AVAILABLE: 3,163 SF

- Showings by Appointment Only
- Excellent Visibility
- Two Points of Easy Access
- 18,674 Vehicles Per Day on Main Street



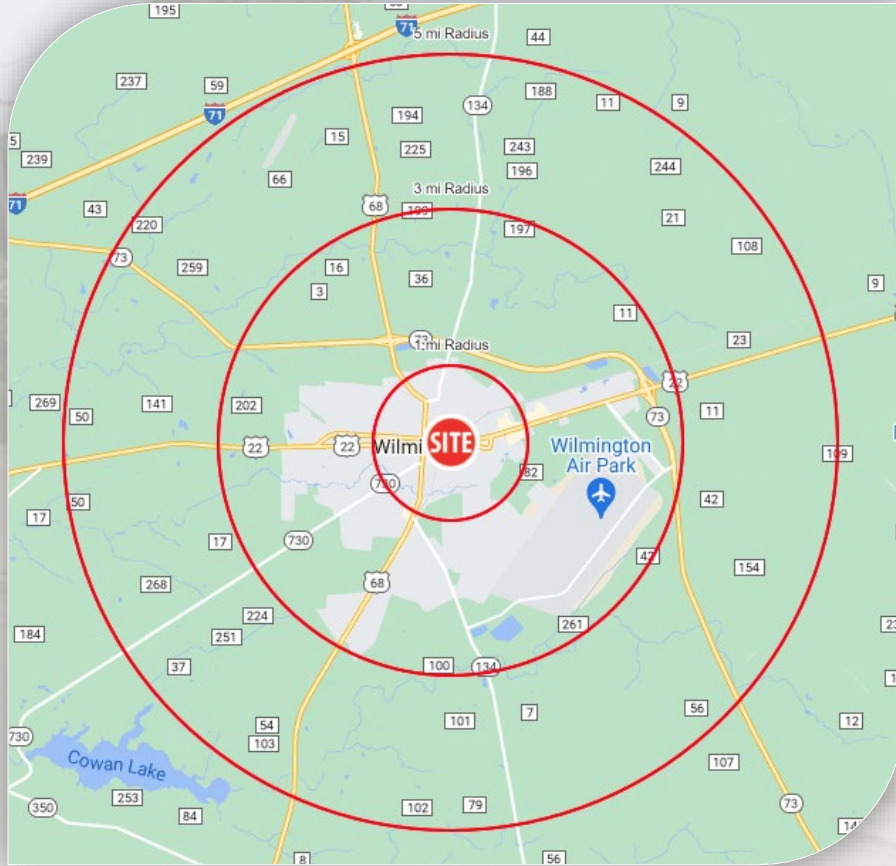
RETAIL SPACE FOR LEASE

UDF CO-TENANT



DEMOGRAPHICS

UDF CO-TENANT



	1 MI RADIUS	3 MI RADIUS	5 MI RADIUS
POPULATION			
2022 Estimated Population	7,535	14,181	17,539
2027 Projected Population	7,517	14,146	17,547
2020 Census Population	7,594	14,225	17,537
2010 Census Population	7,624	14,085	17,375
Projected Annual Growth 2022 to 2027	-	-	-
Historical Annual Growth 2010 to 2022	-	-	-
HOUSEHOLDS			
2022 Estimated Households	2,964	5,708	7,009
2027 Projected Households	2,965	5,714	7,035
2020 Census Households	2,986	5,720	7,000
2010 Census Households	2,972	5,666	6,920
Projected Annual Growth 2022 to 2027	-	-	-
Historical Annual Growth 2010 to 2022	-	-	-
AGE			
2022 Est. Population Under 10 Years	11.7%	12.6%	12.3%
2022 Est. Population 10 to 19 Years	13.7%	12.8%	12.8%
2022 Est. Population 20 to 29 Years	18.3%	15.2%	14.1%
2022 Est. Population 30 to 44 Years	16.1%	16.8%	16.9%
2022 Est. Population 45 to 59 Years	16.3%	16.9%	18.0%
2022 Est. Population 60 to 74 Years	15.7%	16.6%	17.2%
2022 Est. Population 75 Years or Over	8.3%	9.1%	8.7%
2022 Est. Median Age	35.5	37.6	38.7
MARITAL STATUS & GENDER			
2022 Est. Male Population	47.7%	47.4%	48.0%
2022 Est. Female Population	52.3%	52.6%	52.0%
2022 Est. Never Married	37.8%	33.0%	31.1%
2022 Est. Now Married	38.4%	41.0%	44.1%
2022 Est. Separated or Divorced	15.4%	17.2%	16.2%
2022 Est. Widowed	8.5%	8.8%	8.6%
INCOME			
2022 Est. HH Income \$200,000 or More	3.1%	2.6%	3.1%
2022 Est. HH Income \$150,000 to \$199,999	2.7%	3.1%	3.4%
2022 Est. HH Income \$100,000 to \$149,999	7.9%	8.7%	10.6%
2022 Est. HH Income \$75,000 to \$99,999	10.3%	11.6%	13.1%
2022 Est. HH Income \$50,000 to \$74,999	21.5%	21.3%	21.4%
2022 Est. HH Income \$35,000 to \$49,999	13.0%	13.3%	13.2%
2022 Est. HH Income \$25,000 to \$34,999	12.8%	11.8%	10.7%
2022 Est. HH Income \$15,000 to \$24,999	12.5%	10.1%	9.2%
2022 Est. HH Income Under \$15,000	16.1%	17.5%	15.3%
2022 Est. Average Household Income	\$59,602	\$63,531	\$68,853
2022 Est. Median Household Income	\$46,032	\$47,829	\$52,716
2022 Est. Per Capita Income	\$24,142	\$26,068	\$27,941
2022 Est. Total Businesses	219	610	662
2022 Est. Total Employees	2,794	10,930	11,244