

RETAIL PROPERTY FOR SALE

Retail Strip Center Redevelopment Opportunity Near Detroit City Airport

11908-11940 CONNER ST
DETROIT, MI 48205



Redevelopment opportunity - across street from
Coleman A. Young International Airport
Multiple Units Possible
Good Visibility



P.A. COMMERCIAL
Corporate & Investment Real Estate



OFFERING SUMMARY

Sale Price:	\$795,000
Price / SF:	\$72.27
Building Size:	11,000 SF
Zoning:	R-3
APN:	21-046-337
Market:	Detroit
Submarket:	E of Woodward
Traffic Count:	16,000 VPD

PROPERTY OVERVIEW

With many transformational retail developments coming to Detroit, this retail strip offers a redevelopment opportunity with good street visibility and the ability to create multiple units to lease. This retail center is located across the street from Coleman A Young Airport, which is poised to begin a massive transformation for the first time in nearly 30 years.

LOCATION OVERVIEW

Located across the street from The Coleman A. Young International Airport. Close proximity to I-94, Harper Ave and Van Dyke Ave. Approximately 6 miles northeast of Downtown Detroit.

PROPERTY HIGHLIGHTS

- Redevelopment opportunity
- Across from Coleman A. Young International Airport
- Multiple Units Possible
- Good Visibility
- Brick Build

MATTHEW J. SCHIFFMAN CEO/Managing Member
matt@pacommercial.com (P) 248.281.9907 (C) 248.943.6449

MIKE GUNN Senior Associate
mike@pacommercial.com (P) 248.331.0202 (C) 248.924.7499



P.A. COMMERCIAL
Corporate & Investment Real Estate

26555 Evergreen Road, Suite 1500 • Southfield, MI 48076

11908-11940 CONNER ST, DETROIT, MI

// ADDITIONAL PHOTOS



MATTHEW J. SCHIFFMAN CEO/Managing Member
matt@pacommercial.com (P) 248.281.9907 (C) 248.943.6449

MIKE GUNN Senior Associate
mike@pacommercial.com (P) 248.331.0202 (C) 248.924.7499



P.A. COMMERCIAL
Corporate & Investment Real Estate

26555 Evergreen Road, Suite 1500 • Southfield, MI 48076



MATTHEW J. SCHIFFMAN CEO/Managing Member
matt@pacommercial.com (P) 248.281.9907 (C) 248.943.6449

MIKE GUNN Senior Associate
mike@pacommercial.com (P) 248.331.0202 (C) 248.924.7499

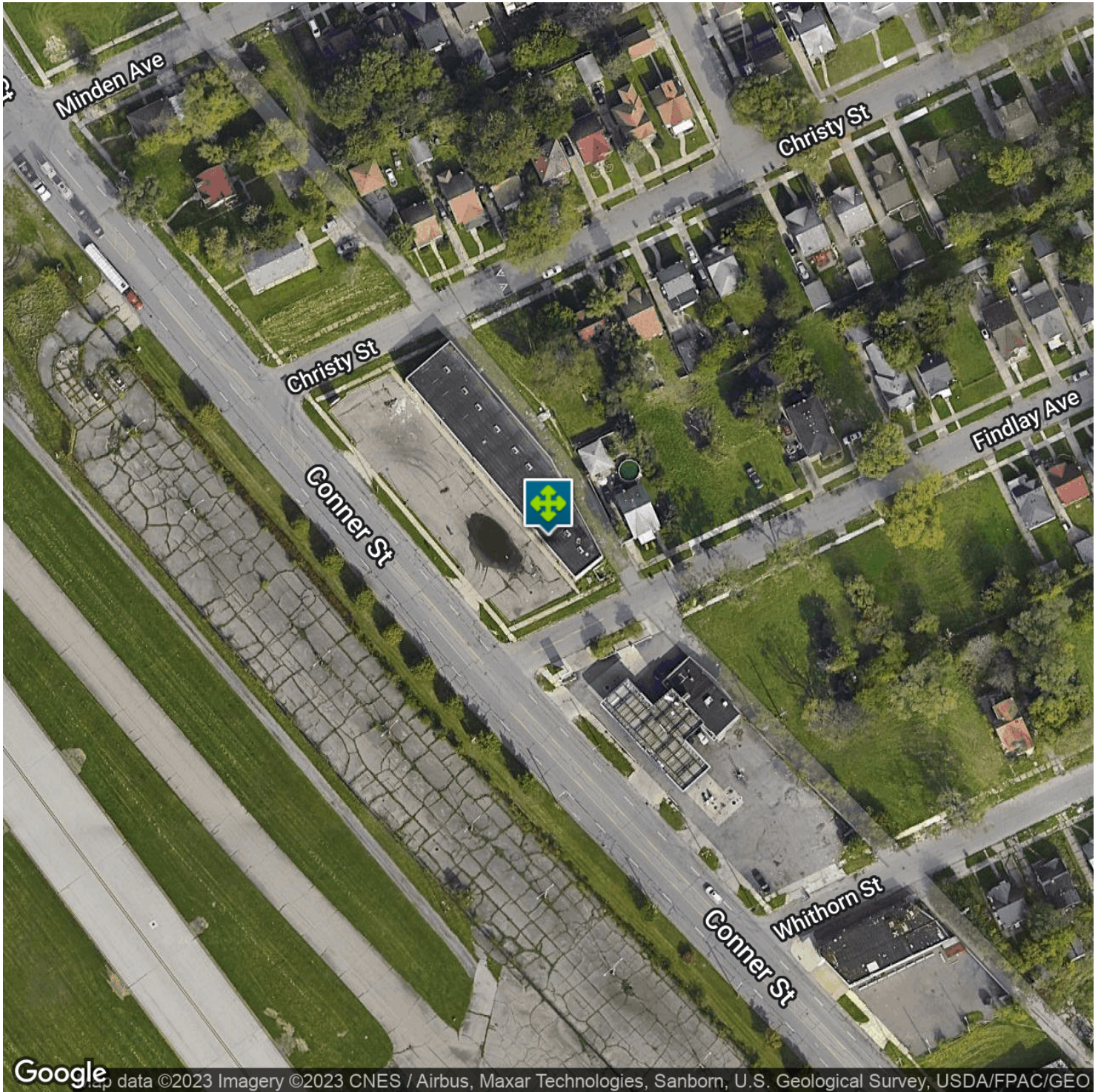


P.A. COMMERCIAL
Corporate & Investment Real Estate

26555 Evergreen Road, Suite 1500 • Southfield, MI 48076

11908-11940 CONNER ST, DETROIT, MI

// AERIAL MAP



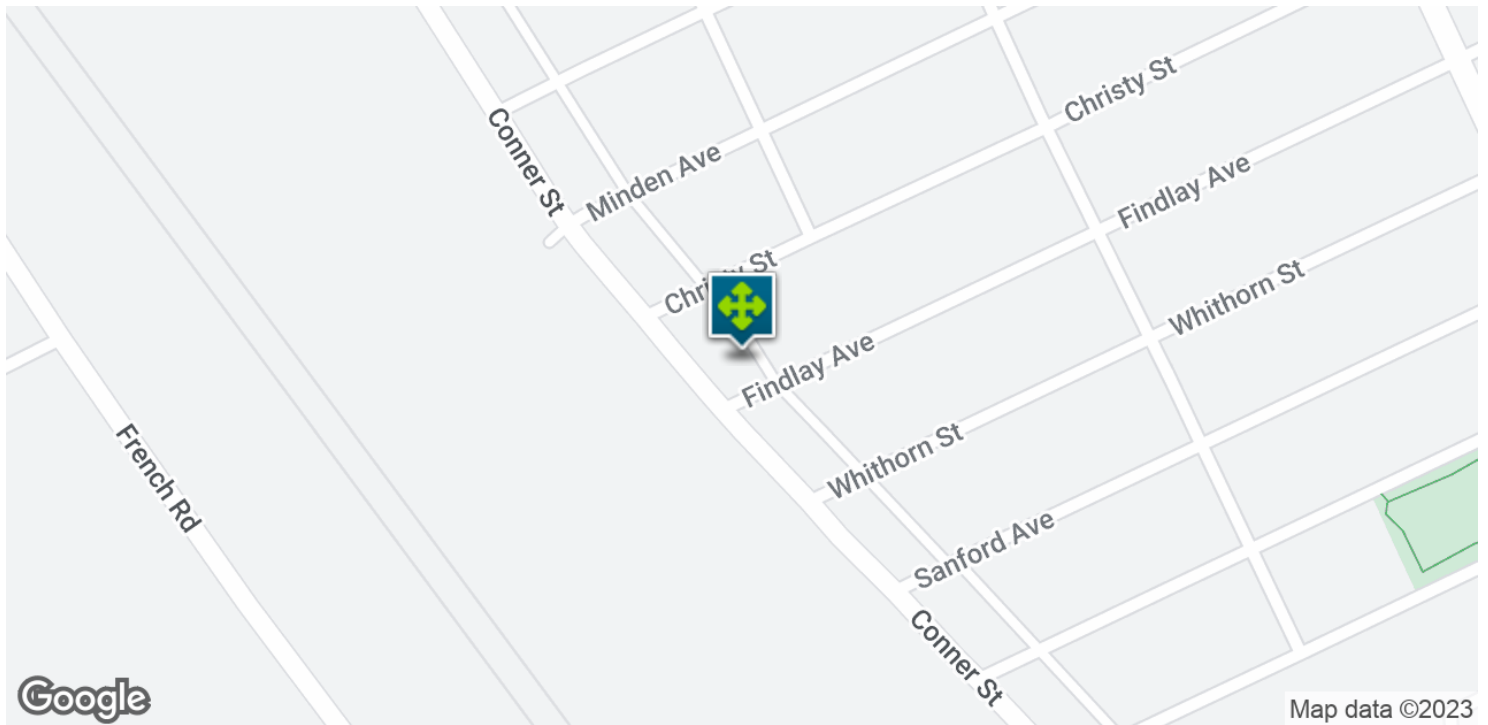
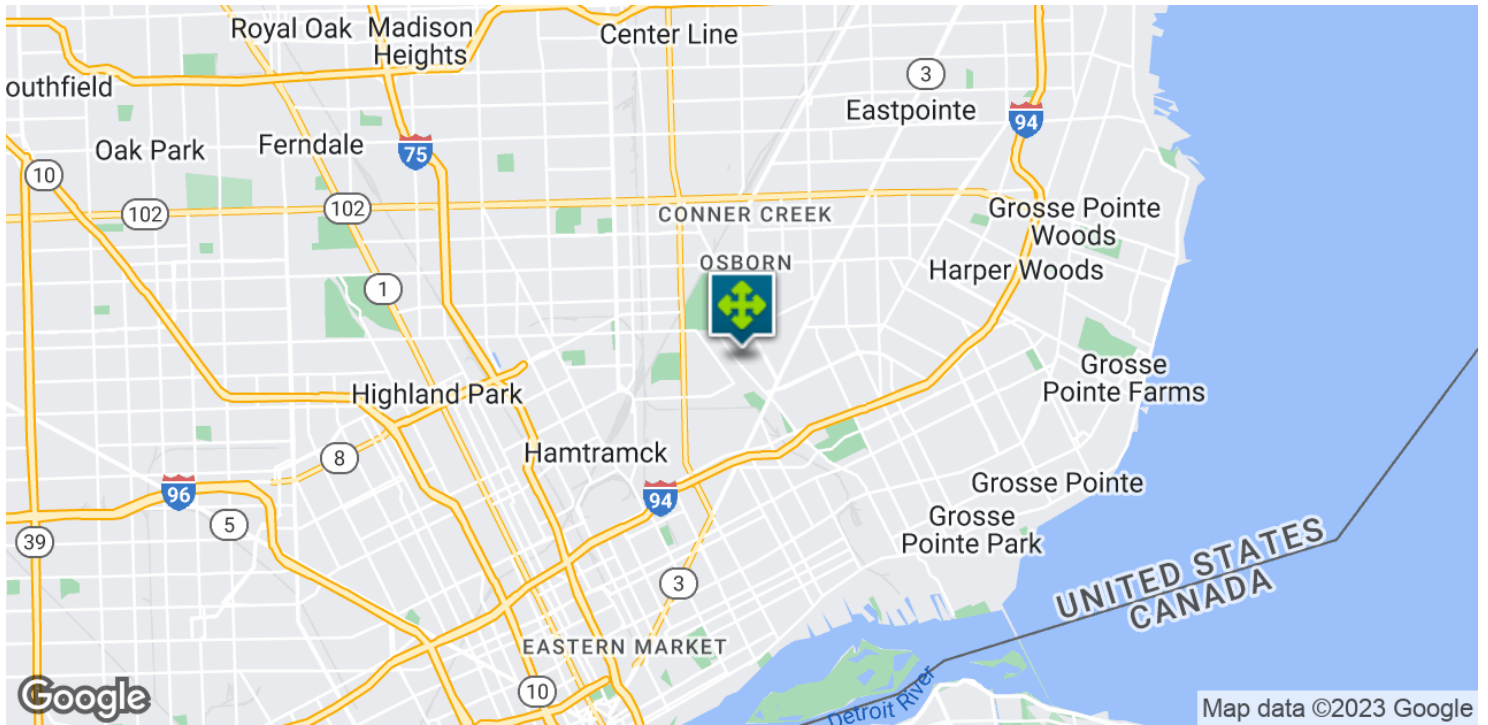
MATTHEW J. SCHIFFMAN CEO/Managing Member
matt@pacommercial.com (P) 248.281.9907 (C) 248.943.6449
MIKE GUNN Senior Associate
mike@pacommercial.com (P) 248.331.0202 (C) 248.924.7499

 **P.A. COMMERCIAL**
Corporate & Investment Real Estate
26555 Evergreen Road, Suite 1500 • Southfield, MI 48076

We obtained the information above from sources we believe to be reliable. However, we have not verified its accuracy and make no guarantee, warranty or representation about it. It is submitted subject to the possibility of errors, omissions, change of price, rental or other conditions, prior sale, lease or financing, or withdrawal without notice. We include projections, opinions, assumptions or estimates for example only, and they may not represent current or future performance of the property. You and your tax and legal advisors should conduct your own investigation of the property and transaction.

11908-11940 CONNER ST, DETROIT, MI

// LOCATION MAP



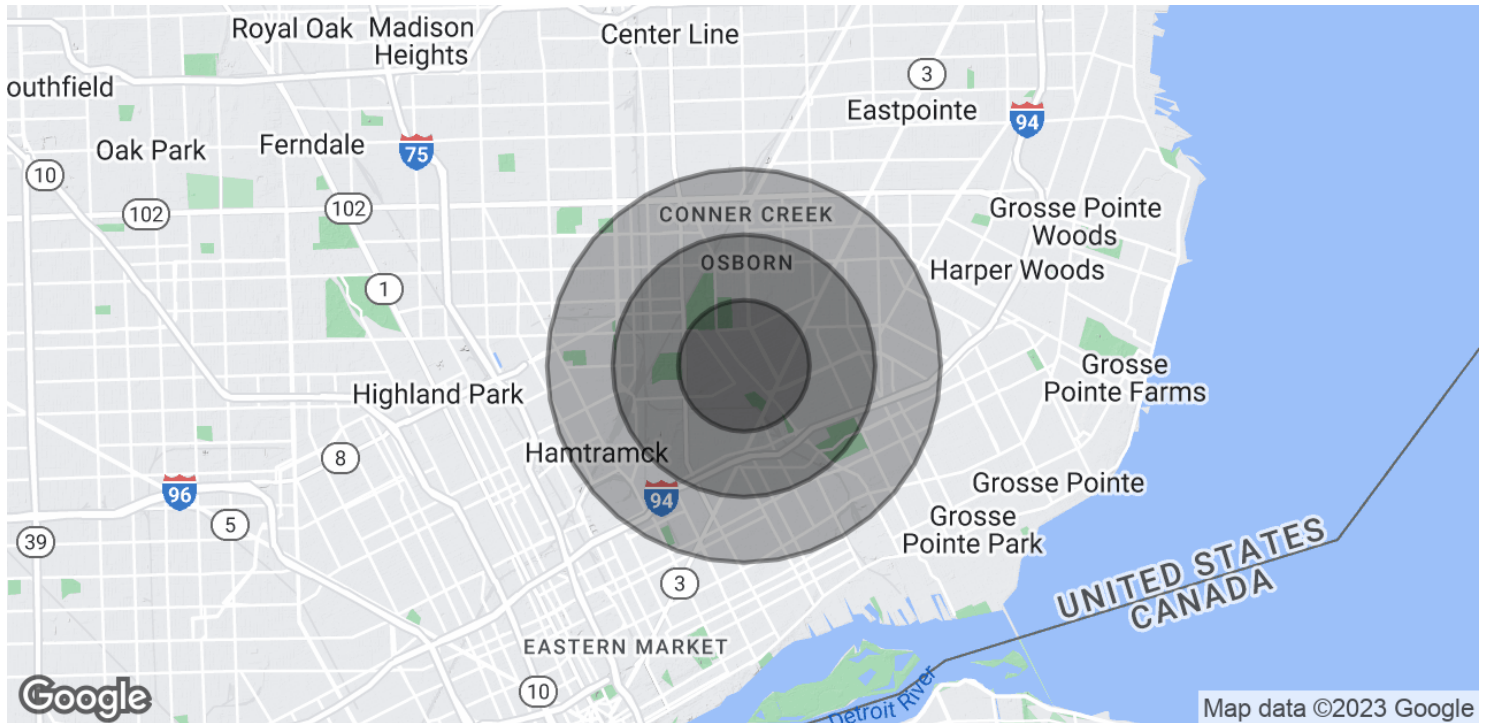
MATTHEW J. SCHIFFMAN CEO/Managing Member
matt@pacommercial.com (P) 248.281.9907 (C) 248.943.6449

MIKE GUNN Senior Associate
mike@pacommercial.com (P) 248.331.0202 (C) 248.924.7499



P.A. COMMERCIAL
Corporate & Investment Real Estate

26555 Evergreen Road, Suite 1500 • Southfield, MI 48076



POPULATION

	1 MILE	2 MILES	3 MILES
Total Population	14,538	61,072	143,142
Average age	28.7	29.5	30.8
Average age (Male)	24.5	26.1	28.2
Average age (Female)	31.8	33.2	33.2

HOUSEHOLDS & INCOME

	1 MILE	2 MILES	3 MILES
Total households	4,283	18,478	44,679
# of persons per HH	3.4	3.3	3.2
Average HH income	\$34,536	\$35,452	\$35,186
Average house value	\$76,861	\$76,376	\$76,799

* Demographic data derived from 2020 ACS - US Census

MATTHEW J. SCHIFFMAN CEO/Managing Member
 matt@pacommercial.com (P) 248.281.9907 (C) 248.943.6449

MIKE GUNN Senior Associate
 mike@pacommercial.com (P) 248.331.0202 (C) 248.924.7499



26555 Evergreen Road, Suite 1500 • Southfield, MI 48076