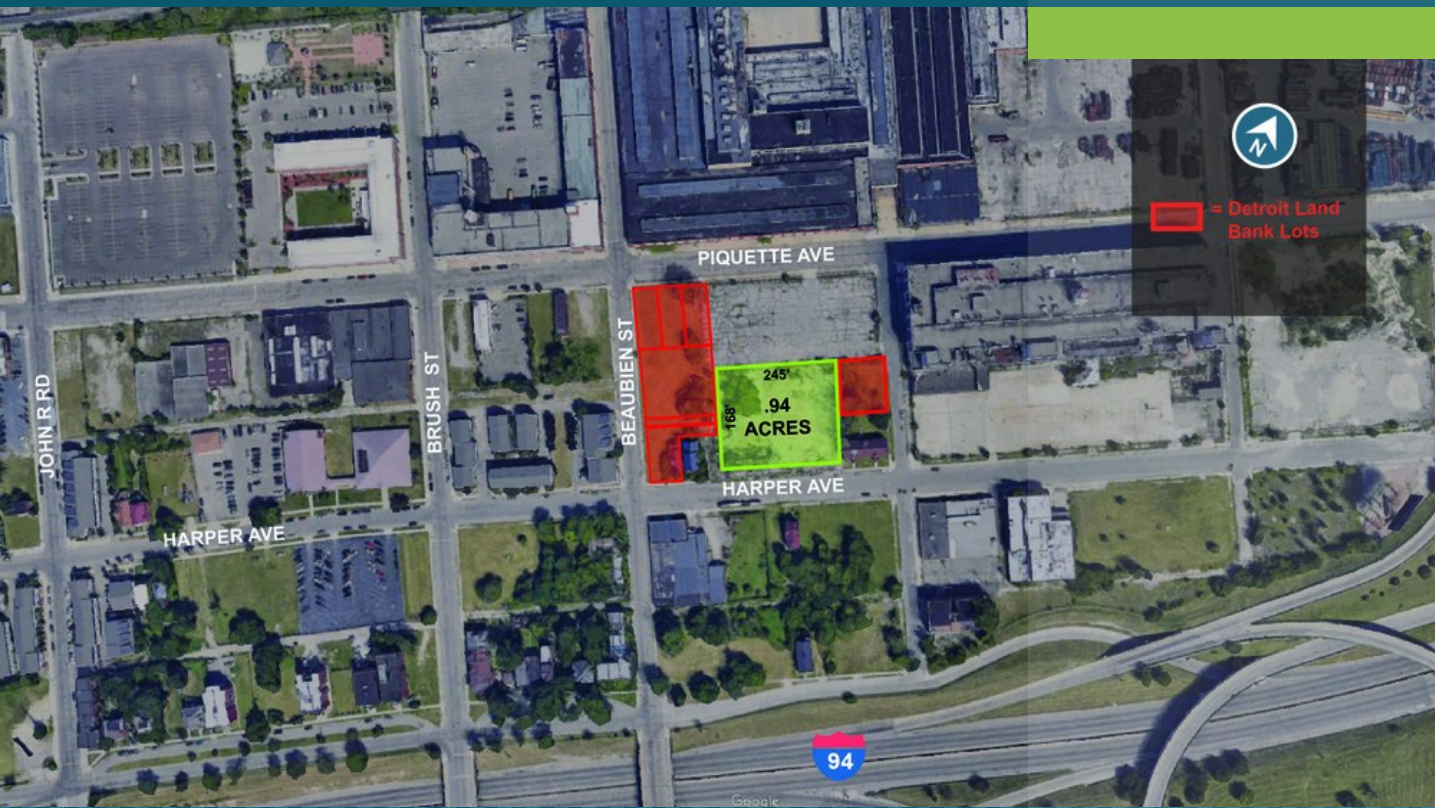


LAND FOR SALE

Prime Land for Industrial/Office User in Milwaukee Junction

547 HARPER AVE
DETROIT, MI 48202



Adjacent land from Detroit Land Bank available for purchase

Close to I-75 and I-94

Upcoming neighborhood with many restaurants

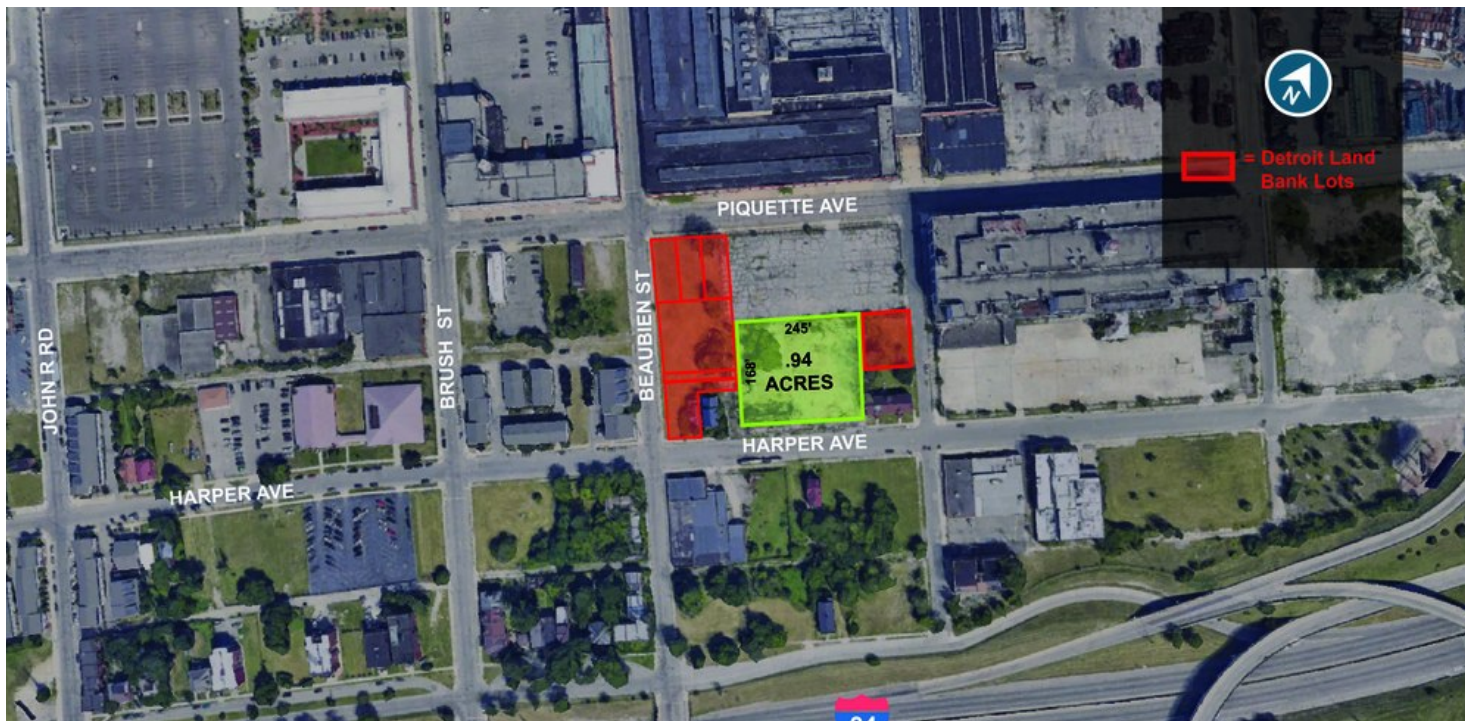


P.A. COMMERCIAL
Corporate & Investment Real Estate

PRIME DETROIT LAND INVESTMENT

547 HARPER AVE, DETROIT, MI

// EXECUTIVE SUMMARY



OFFERING SUMMARY

Sale Price:	\$975,000
Price / SF:	\$23.81
Lot Size:	0.94 Acres
Zoning:	Industrial / Office
Property Taxes	\$1,687 p/y
Market	Detroit
	Detroit-New Center
Traffic Count	147,000 on I-94

PROPERTY OVERVIEW

This .94-acre parcel of land is an important investment piece in Milwaukee Junction, Detroit. The site has 245' of frontage on Harper Ave and can be expanded to include most of the city block via the Detroit Land Bank. This area is currently experiencing an influx of amenities such as hot new restaurants, cultural destinations, and entertainment venues.

LOCATION OVERVIEW

Located in the Milwaukee Junction neighborhood of Detroit, just east of New Center and Midtown. Very close proximity to Wayne State University, College for Creative Studies, Detroit Medical Center, and kitty-corner from the Ford Piquette Avenue Plant Museum/Event Center. Near the QLINE streetcar system and I-75/I-94.

PROPERTY HIGHLIGHTS

- Adjacent land from Detroit Land Bank available for purchase
- The site can be expanded to include most of the city block
- Close to I-75 and I-94
- Walkable neighborhood with many restaurants and bars
- Walking distance to the QLINE streetcar system
- City & State incentives for development

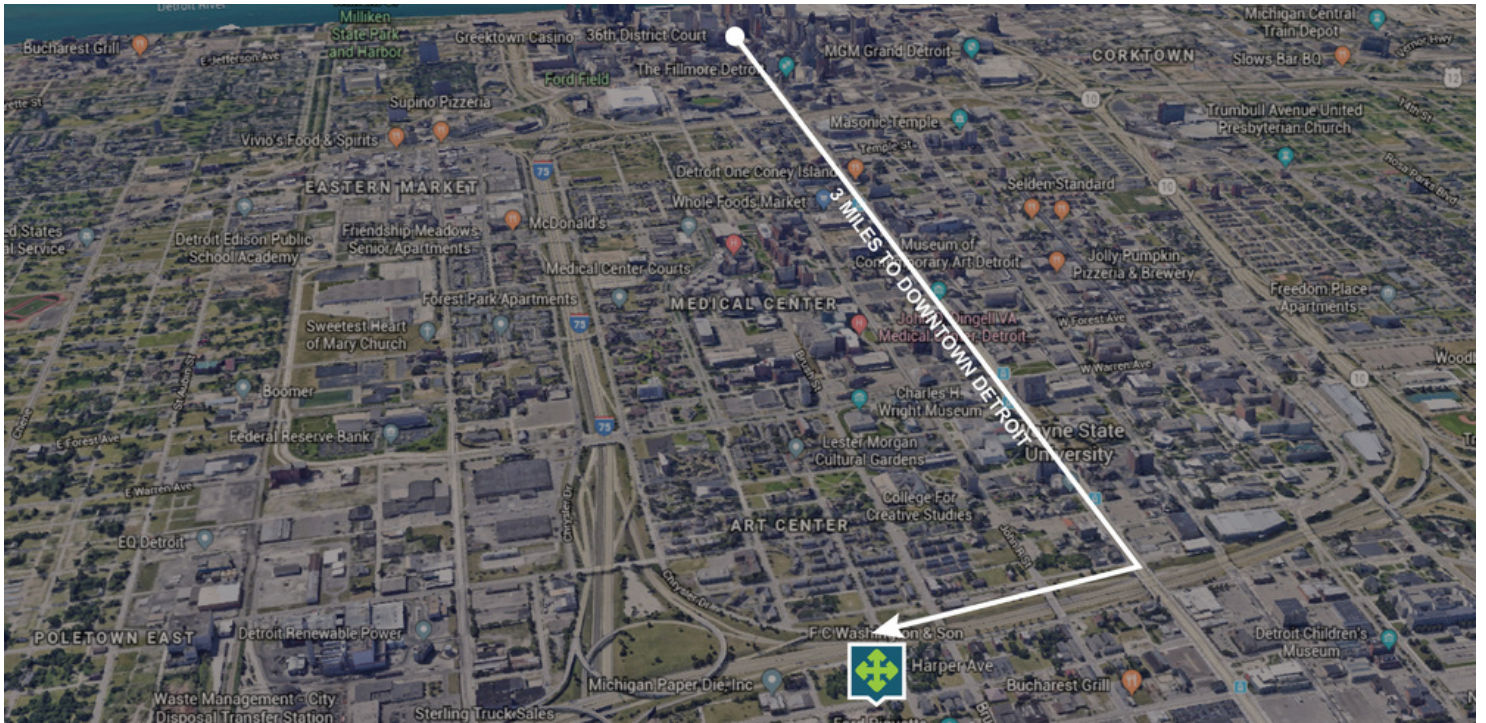
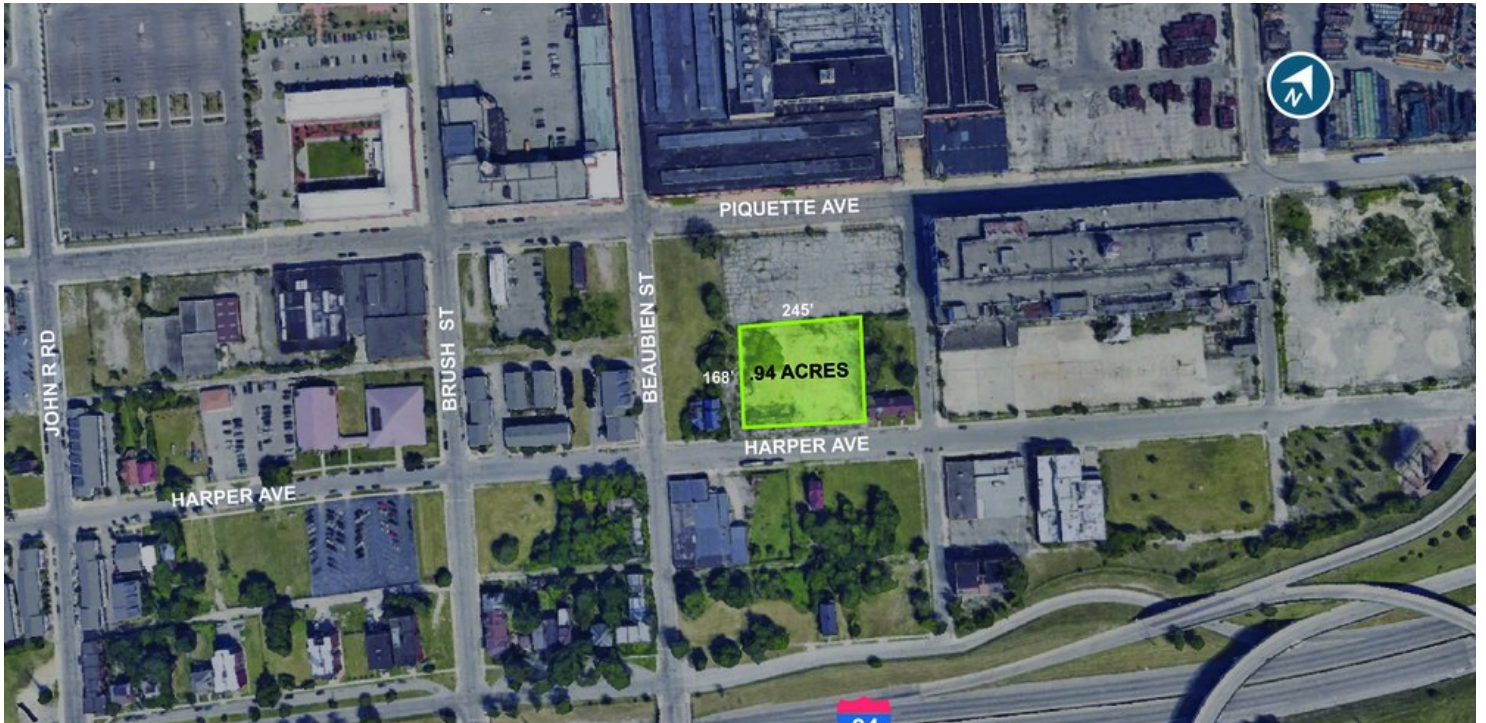
FOR MORE INFORMATION CONTACT:

LEVI F. SMITH Senior Associate
levi@pacommercial.com (P) 248.331.0205 (C)

PRIME DETROIT LAND INVESTMENT

547 HARPER AVE, DETROIT, MI

// PARCEL AERIAL



 **P.A. COMMERCIAL**
Corporate & Investment Real Estate
26555 Evergreen Road, Suite 1500 • Southfield, MI 48076

FOR MORE INFORMATION CONTACT:

LEVI F. SMITH Senior Associate
levi@pacommercial.com (P) 248.331.0205 (C)

We obtained the information above from sources we believe to be reliable. However, we have not verified its accuracy and make no guarantee, warranty or representation about it. It is submitted subject to the possibility of errors, omissions, change of price, rental or other conditions, prior sale, lease or financing, or withdrawal without notice. We include projections, opinions, assumptions or estimates for example only, and they may not represent current or future performance of the property. You and your tax and legal advisors should conduct your own investigation of the property and transaction.

PRIME DETROIT LAND INVESTMENT

547 HARPER AVE, DETROIT, MI

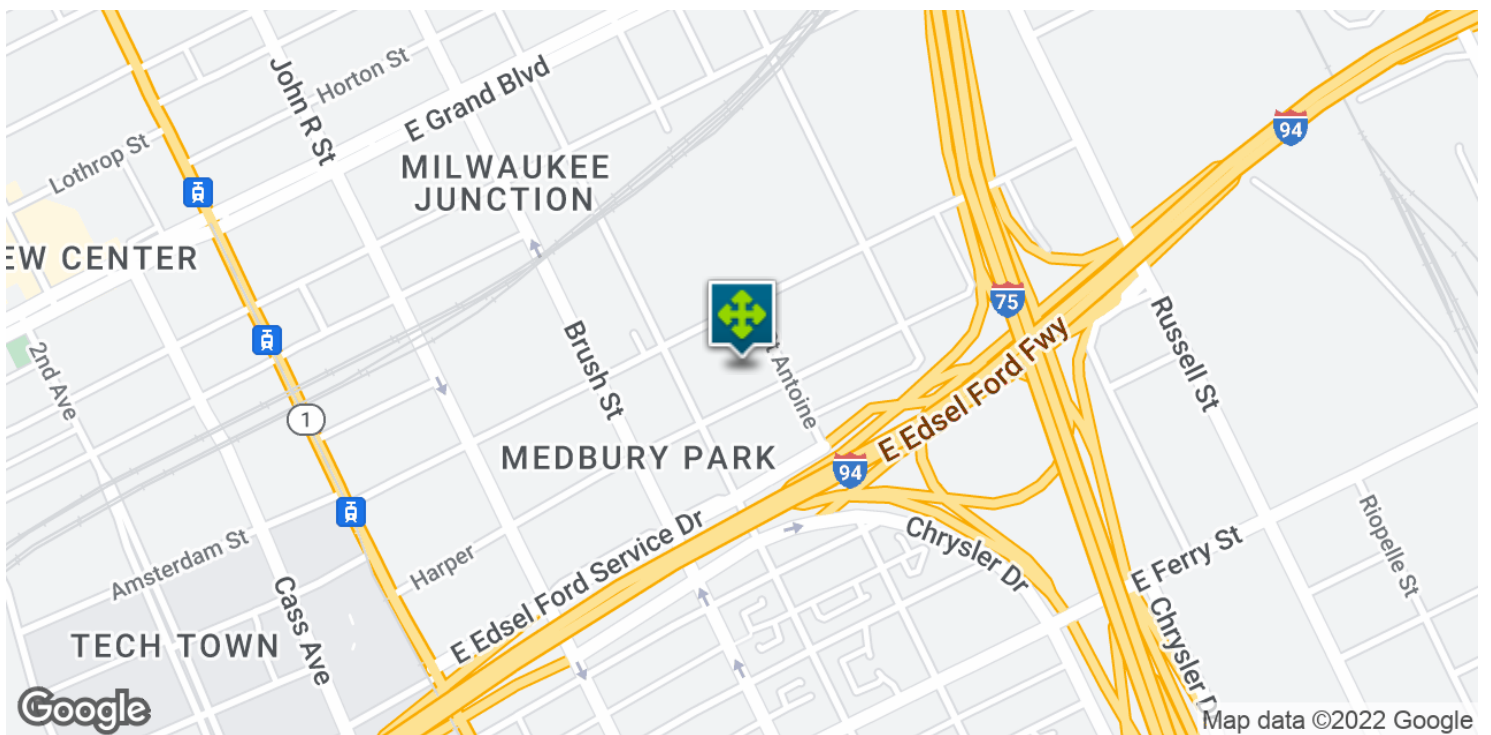
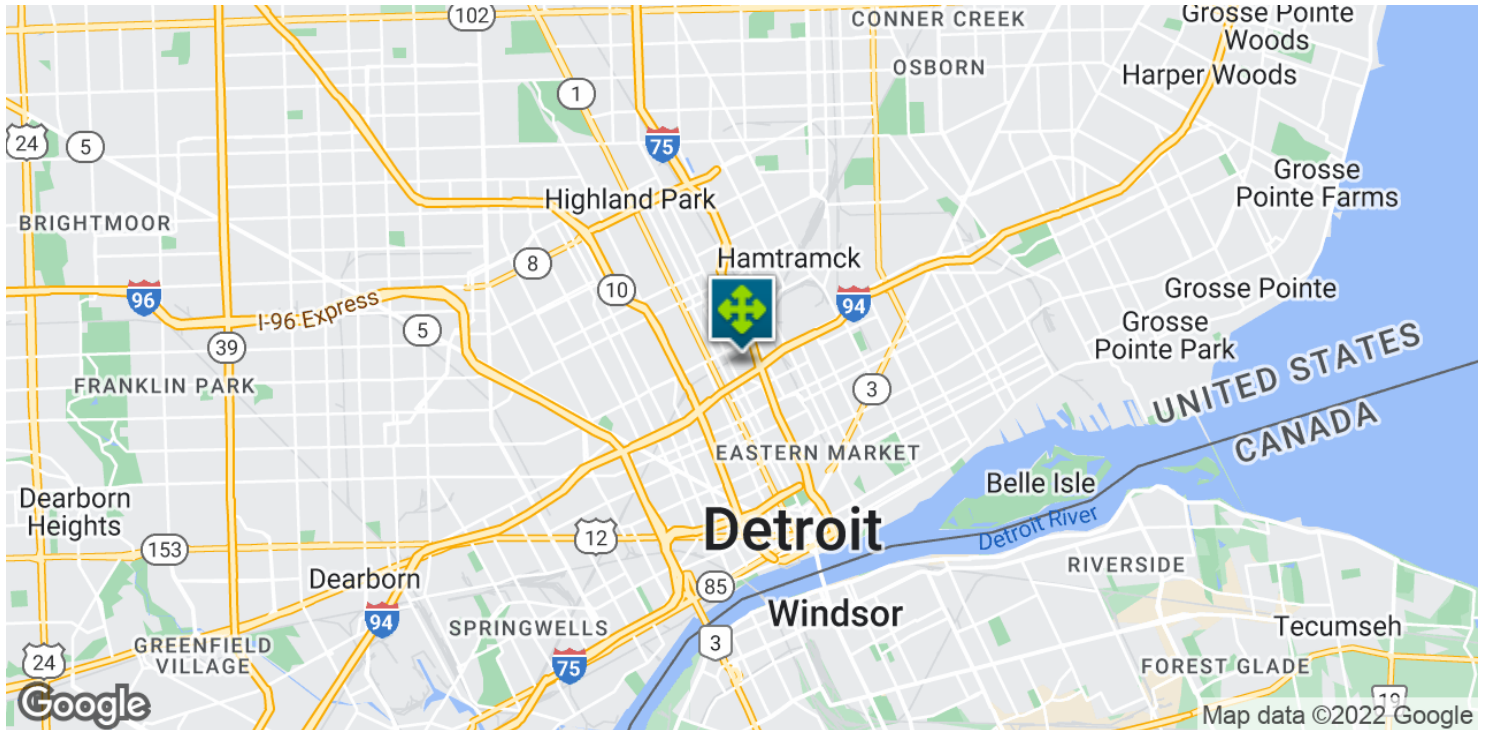
// RETAILER MAP

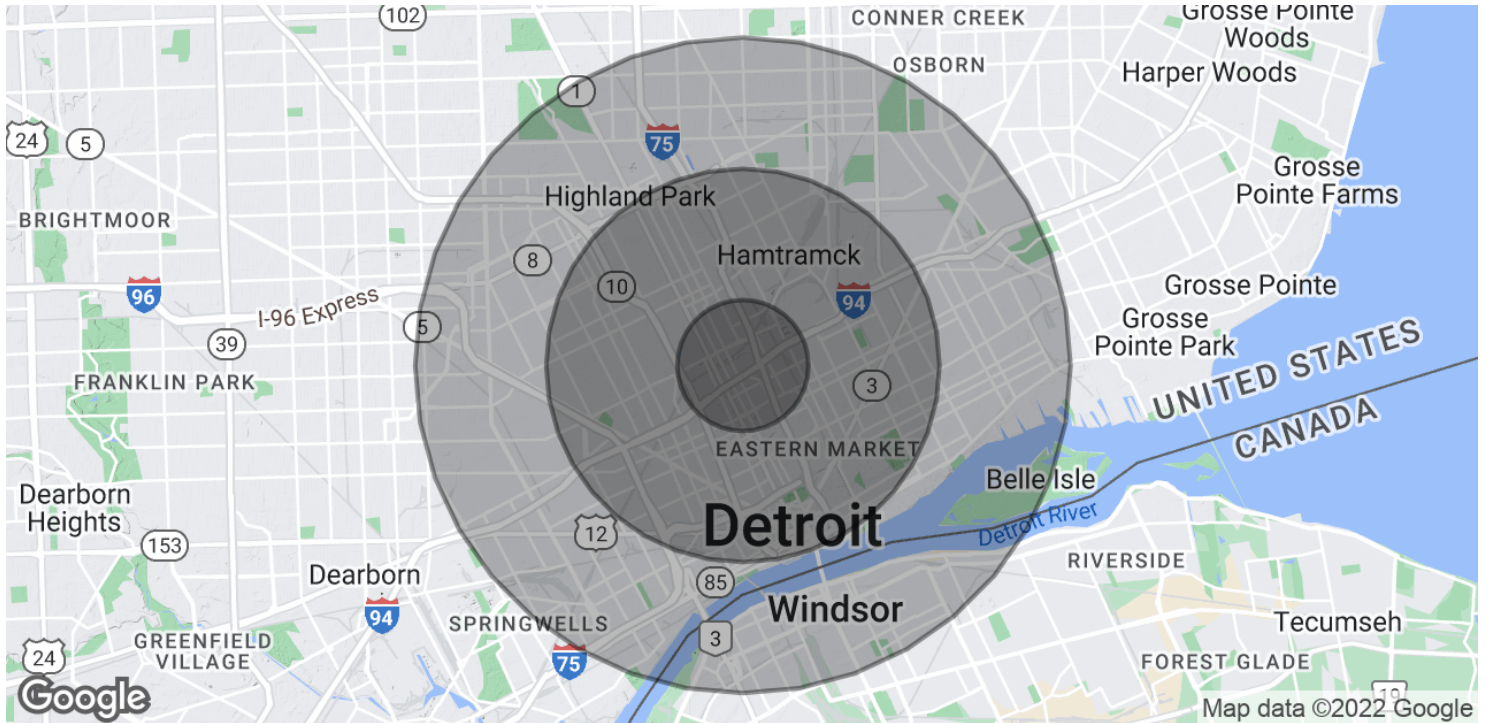


PRIME DETROIT LAND INVESTMENT

547 HARPER AVE, DETROIT, MI

// LOCATION MAPS





POPULATION

	1 MILE	3 MILES	5 MILES
Total Population	10,307	131,802	337,673
Average Age	34.1	34.9	35.1
Average Age (Male)	29.4	33.4	33.2
Average Age (Female)	38.8	36.2	36.5

HOUSEHOLDS & INCOME

	1 MILE	3 MILES	5 MILES
Total Households	4,995	53,746	125,604
# of Persons per HH	2.1	2.5	2.7
Average HH Income	\$30,654	\$31,812	\$32,808
Average House Value	\$108,529	\$93,896	\$83,632

* Demographic data derived from 2020 ACS - US Census