

Available Summer 2021

136 Tewning Road, Williamsburg

New construction flex/light
industrial units

Available unit sizes:

- 1,150 square feet
- Rear building 800 square feet + mezzanine
- Max. contiguous 3,450 square feet

Each unit will be equipped with a storefront entrance and rear rollup doors

Turnkey build-to-suit options
available for qualified tenants

Convenient location close to New
Town, Route 199, and downtown
Williamsburg

M-1 Light Industrial zoning, wide
variety of commercial and
manufacturing uses allowed by
right

***For Lease \$12.00 PSF,
Tenant Pays Utilities***



Contact:

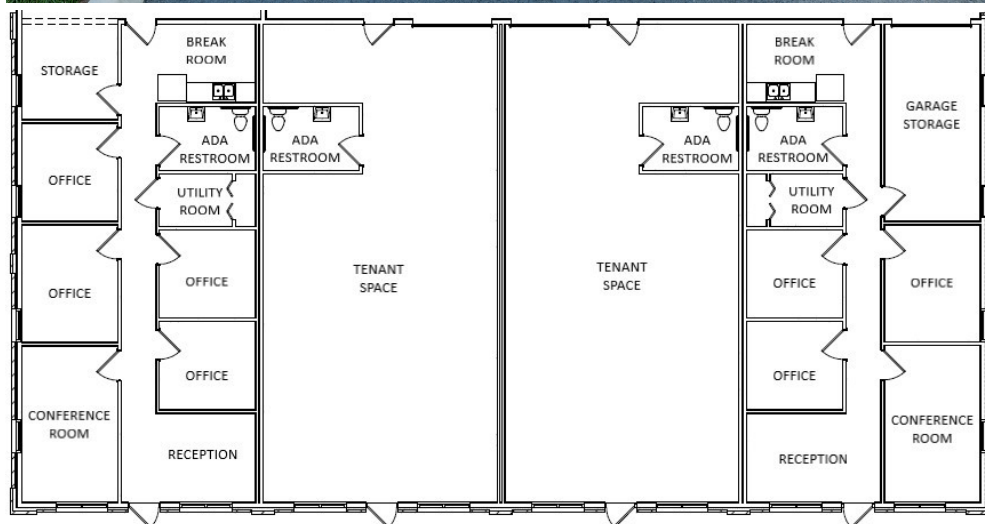
Mac Houtz

757.873.1401

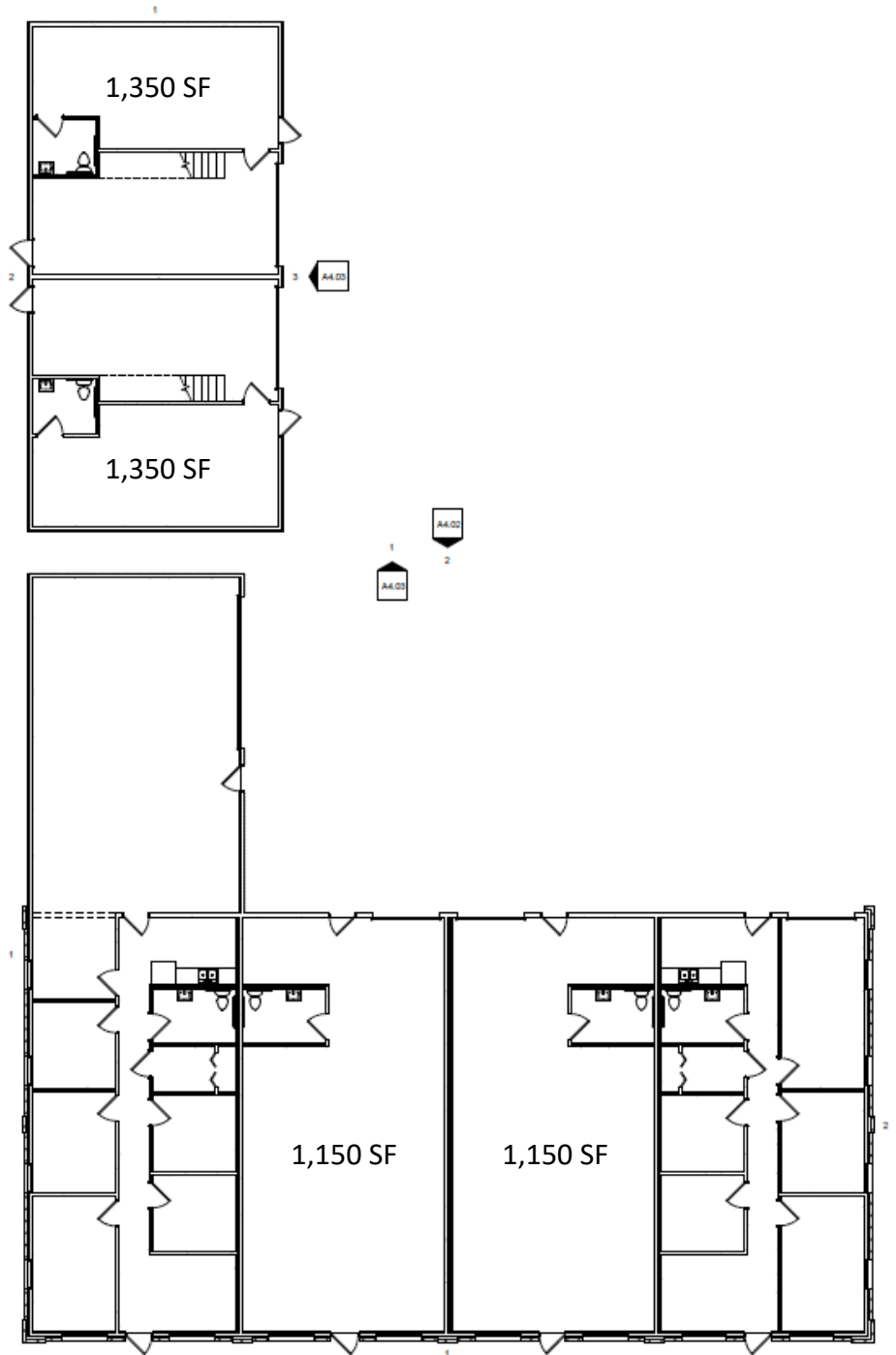
mhoutz@druckerandfalk.com

www.druckerandfalk.com

Ryder Business Park



136 Tewning Road Williamsburg, VA



DF.
DF COMMERCIAL
BY DRUCKER+FALK

Contact:

Mac Houtz

757.873.1401

mhoutz@druckerandfalk.com

www.druckerandfalk.com