



High Visibility Development Land Parcel For Sale

1805 Hayes Road
Gloucester Point, Virginia

For more Information please contact:

Mac Houtz
Drucker & Falk, LLC
11824 Fishing Point Drive
Newport News, Virginia 23606
757.873.1401
mhoutz@druckerandfalk.com

DF.
DF COMMERCIAL
BY DRUCKER+FALK

Property Overview

Description:

Landmark visibility at Gloucester Point. This parcel offers long frontage and good traffic counts on Route 17, just north of the Coleman Bridge. Secondary access from Hayes Road and public utilities available. Great location for any visibility driven retail or office client, or potential fuel/convenience location.

Location:

One mile north of the Coleman Bridge. This parcel offers convenient access to York County (5 minutes), Gloucester Courthouse, Newport News, and downtown Williamsburg (15 minutes).

Size:

2.44 acres

For more information please contact:

Mac Houtz
Drucker & Falk, LLC
11824 Fishing Point Drive
Newport News, Virginia 23606
757.873.1401
mhoutz@druckerandfalk.com

This information was obtained from sources deemed to be reliable but is not warranted. This offer subject to errors and omissions or withdrawal without notice. Unless disclosed otherwise, Drucker & Falk, LLC is the listing broker and represents the seller/landlord.



Property Overview

Frontage:

750+ on George Washington Memorial Highway, 700+ on Hayes Road

Zoned:

B-2

Traffic Count:

32,000 daily trips

Price:

\$385,000

For more information please contact:

Mac Houtz

Drucker & Falk, LLC

11824 Fishing Point Drive

Newport News, Virginia 23606

757.873.1401

mhoutz@druckerandfalk.com

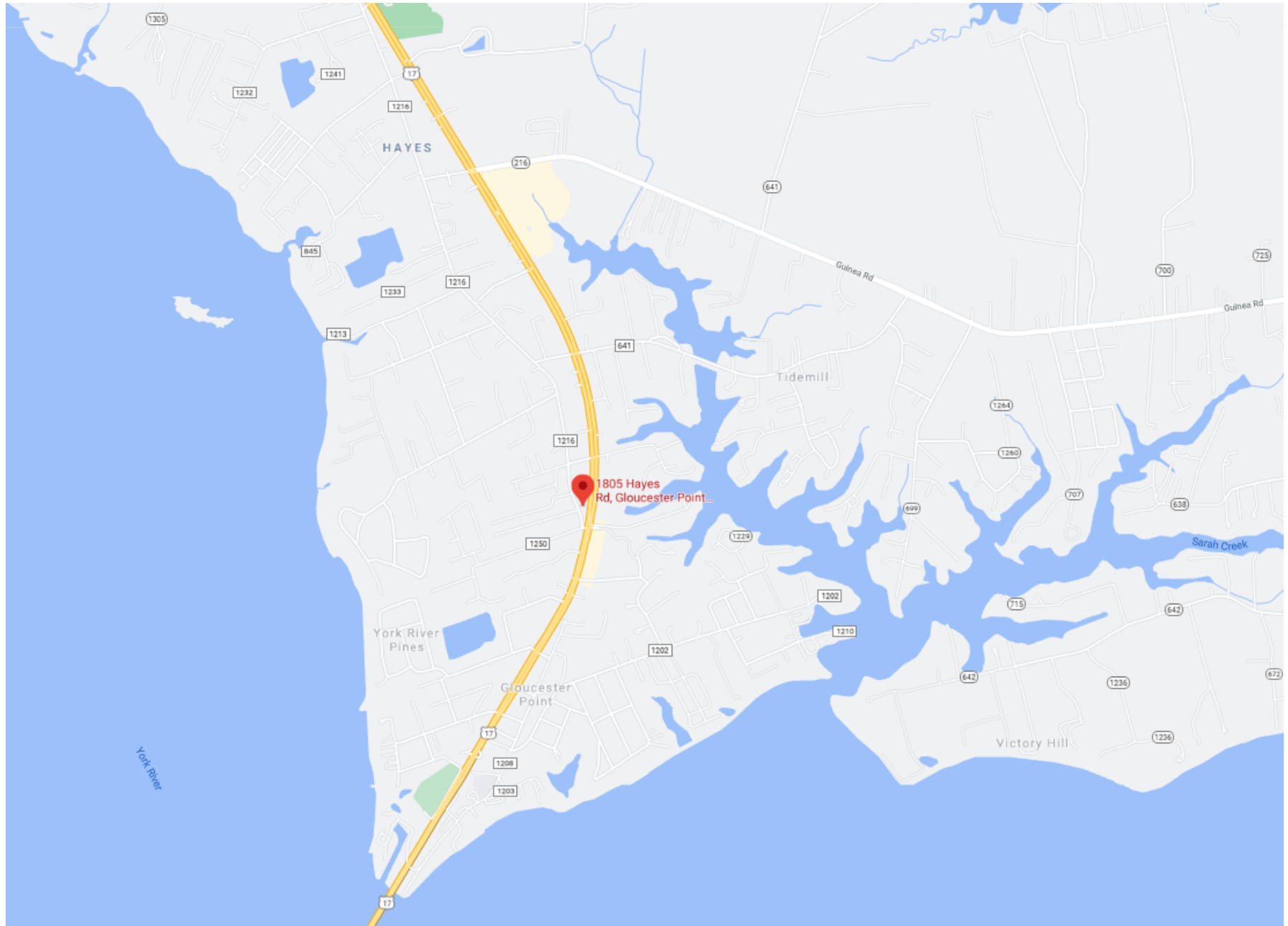
This information was obtained from sources deemed to be reliable but is not warranted. This offer subject to errors and omissions or withdrawal without notice. Unless disclosed otherwise, Drucker & Falk, LLC is the listing broker and represents the seller/landlord.



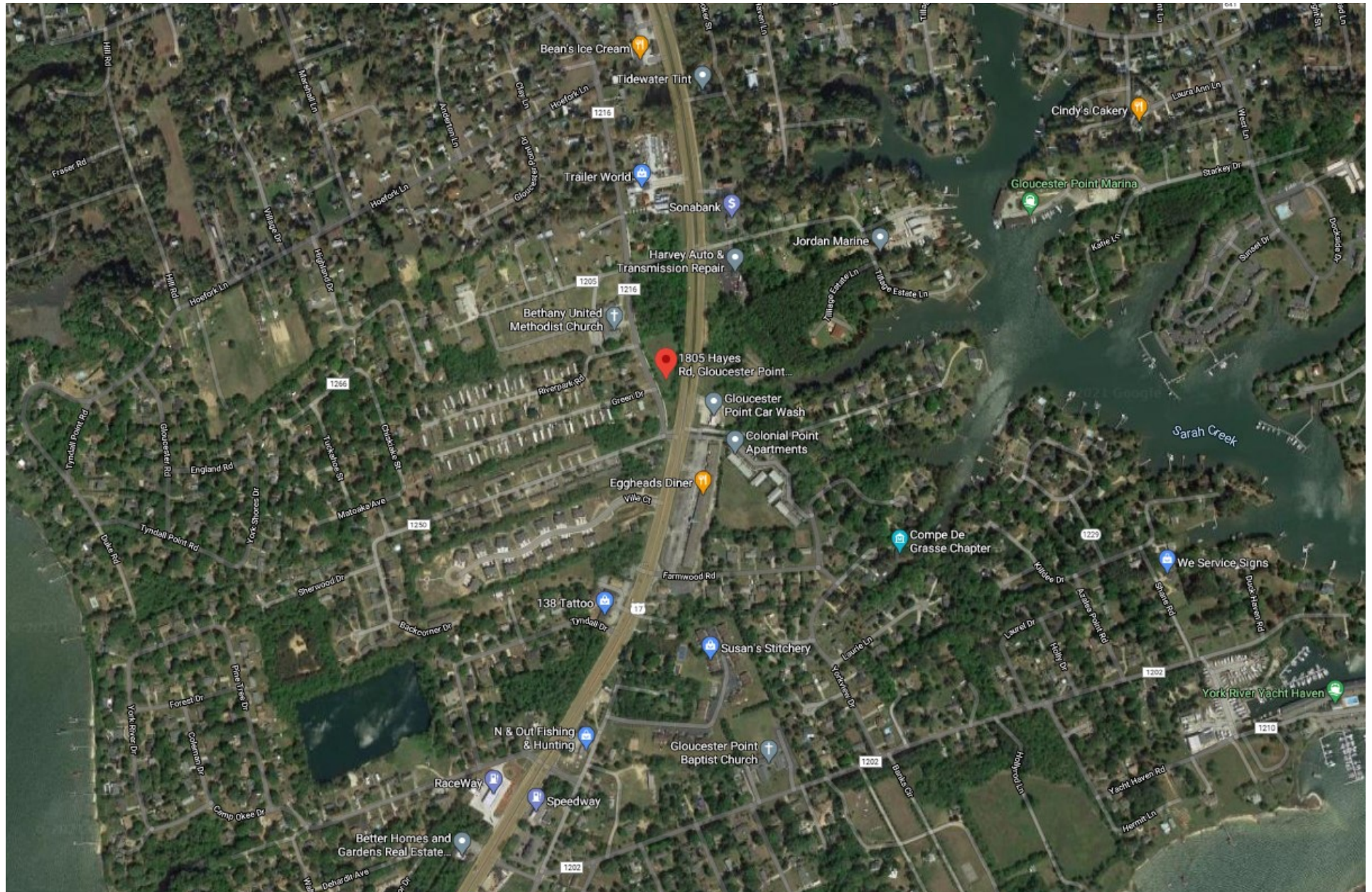
AERIAL



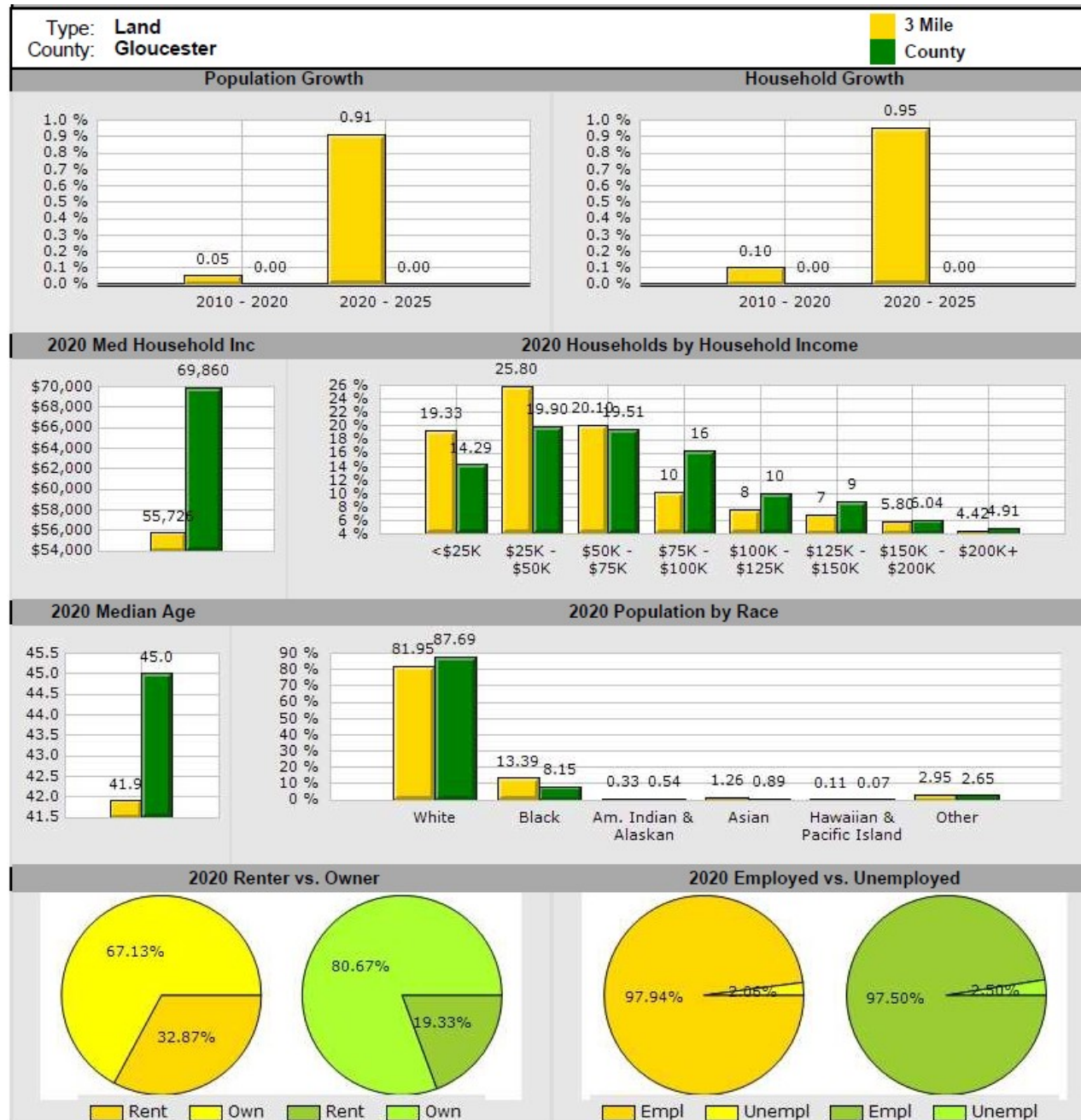
MAPS



MAPS



Demographics



Demographics

