

LAND FOR SALE

15-Acres with Sharp Lake Frontage

FRANCIS ST
JACKSON, MI 49203



15.1-Acres

Frontage on Sharp Lake

Multiple ingress/egress points

Residential and commercial zoning



P.A. COMMERCIAL
Corporate & Investment Real Estate



OFFERING SUMMARY

Sale Price:	Contact Broker
Lot Size:	15.1 Acres
Zoning:	Residential and Commercial
Market:	West Michigan
Submarket:	Jackson County
Traffic Count:	10,000

PROPERTY OVERVIEW

Two parcels of land totaling 15.1 acres with lake frontage on Sharp Lake. The 14.19-acre parcel is zoned residential and the small 0.91-acre parcel is zoned commercial (to be verified with township). There are also two ingress/egress points on Francis Street that wrap around 4109 Francis, providing flexibility to the next owner.

LOCATION OVERVIEW

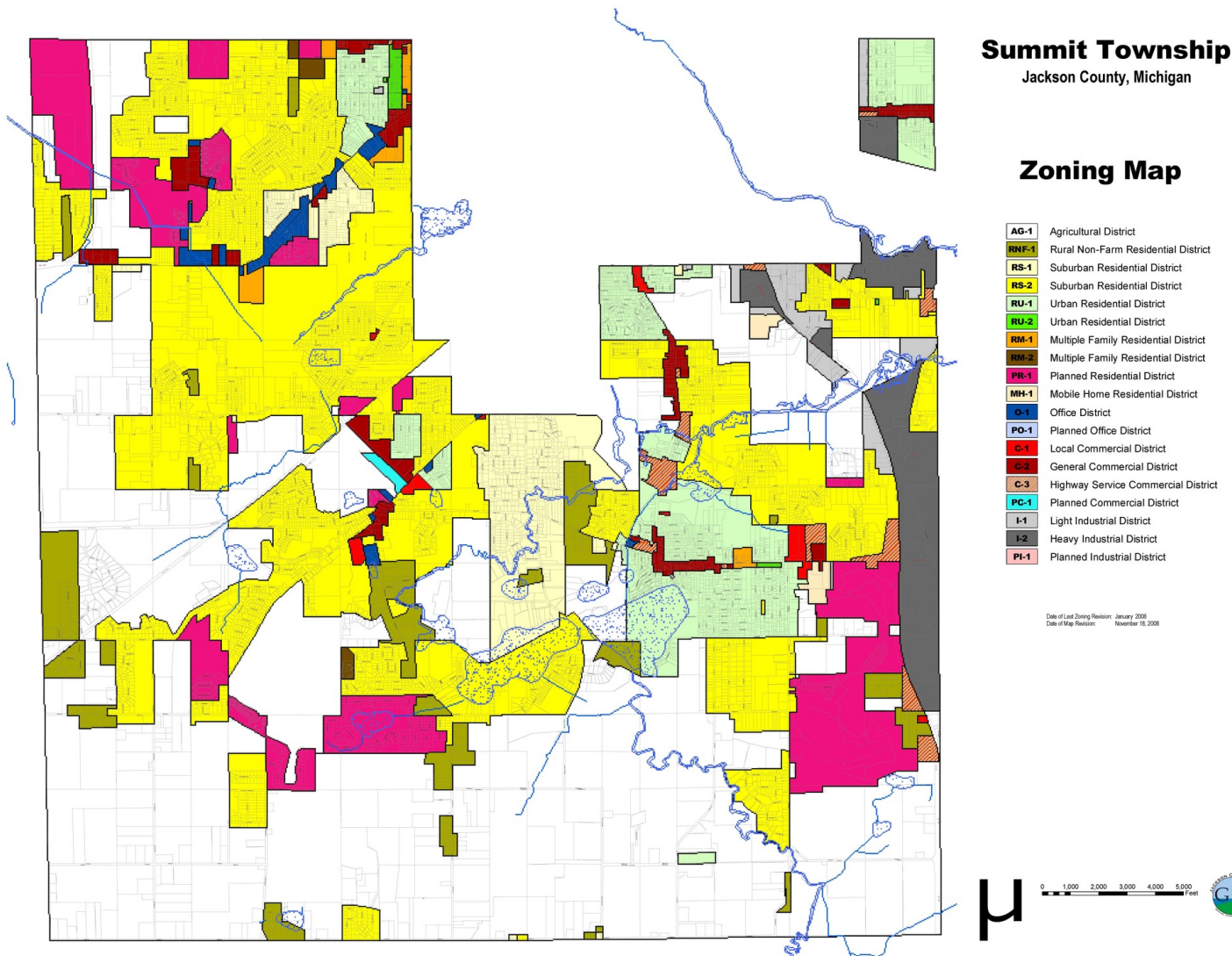
These two parcels are located on the east side of Francis St, just north of Meadow Heights. Close to US-127 and a short drive to I-94

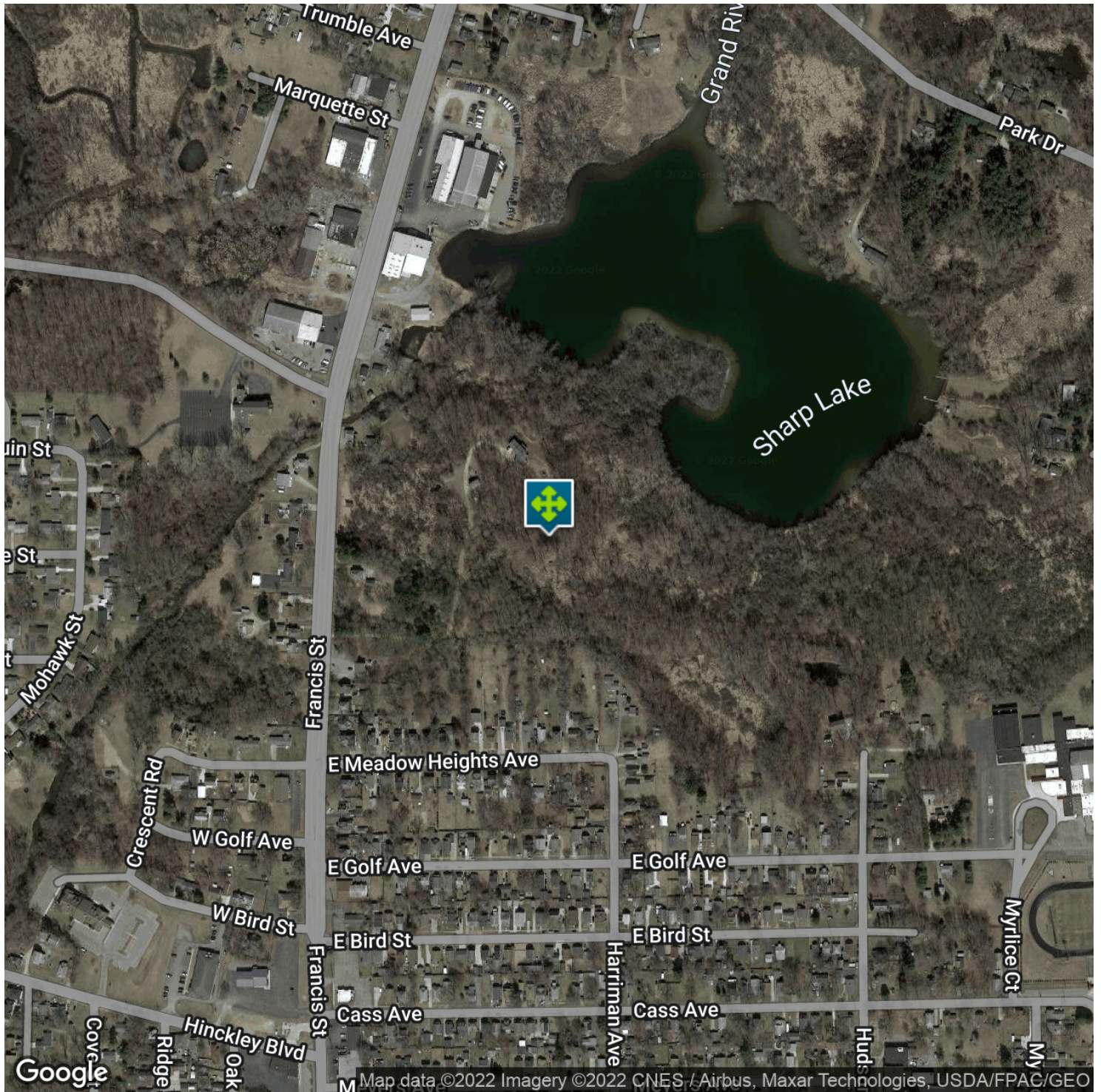
PROPERTY HIGHLIGHTS

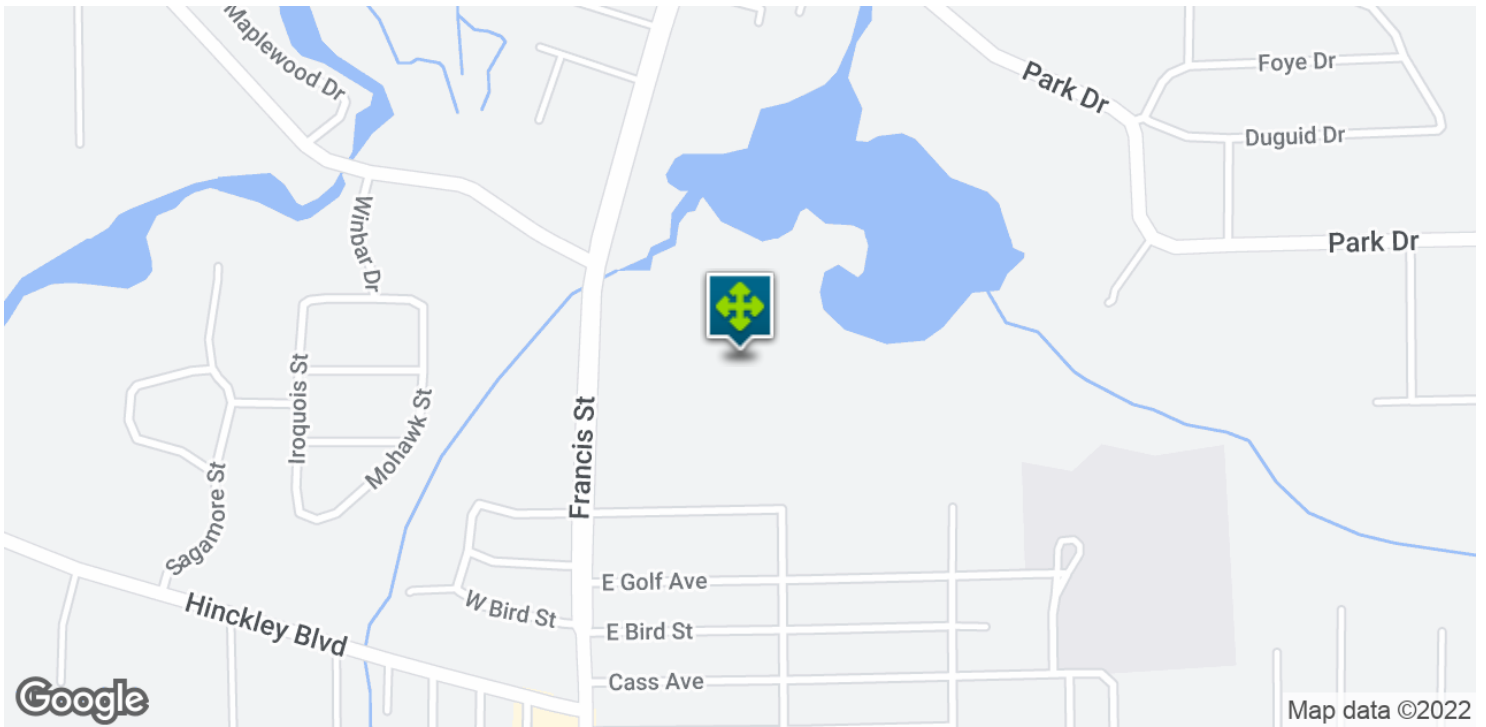
- 15.1-Acres
- Frontage on Sharp Lake
- Multiple ingress/egress points
- Residential and commercial zoning

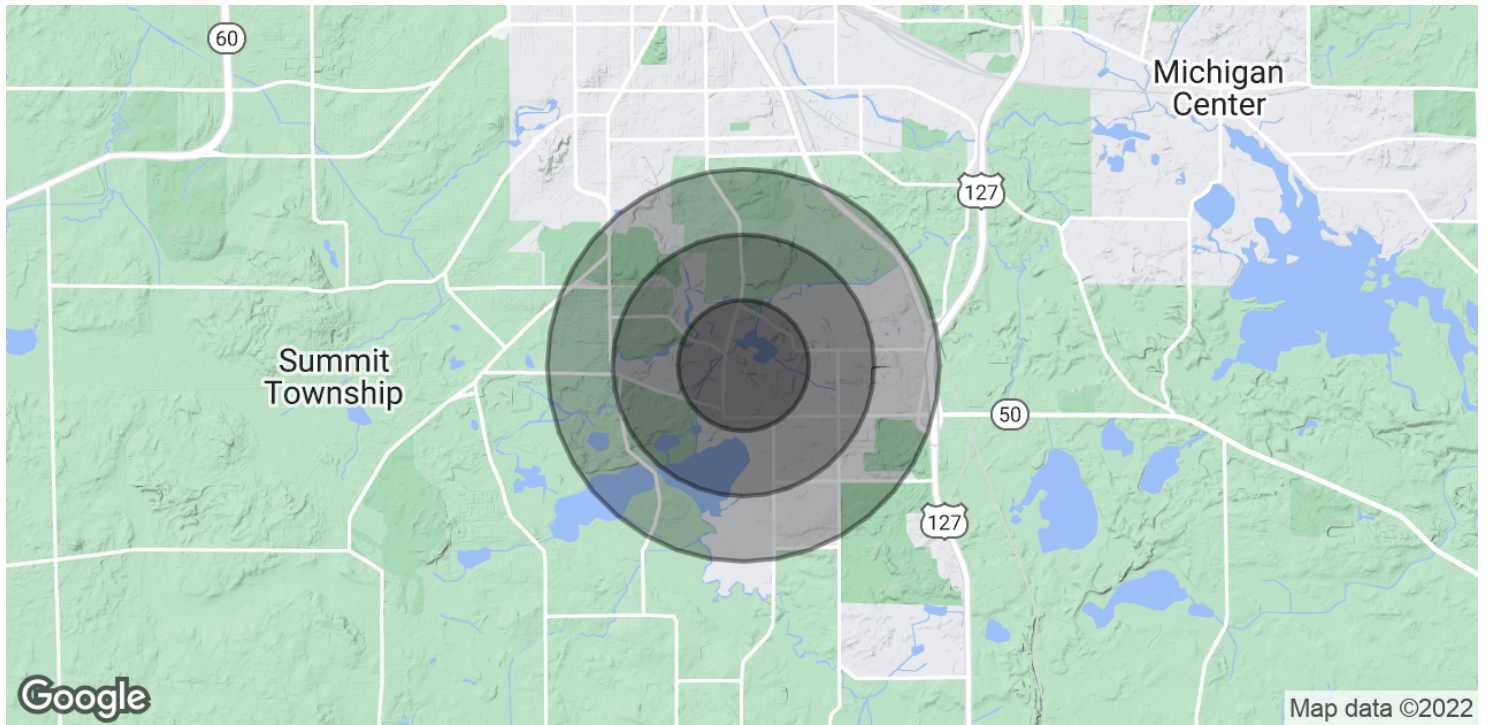
FOR MORE INFORMATION CONTACT:

PIERRE YALDO, ESQ. Associate
 pierre@pacommercial.com (P) 248.358.5312 (C) 248.215.2552









POPULATION

	0.5 MILES	1 MILE	1.5 MILES
Total Population	893	2,948	5,053
Average Age	44.2	40.8	41.3
Average Age (Male)	39.2	37.8	39.0
Average Age (Female)	48.3	44.7	43.9

HOUSEHOLDS & INCOME

	0.5 MILES	1 MILE	1.5 MILES
Total Households	452	1,378	2,222
# of Persons per HH	2.0	2.1	2.3
Average HH Income	\$53,746	\$61,115	\$67,709
Average House Value	\$703,397	\$244,278	\$227,568

* Demographic data derived from 2020 ACS - US Census