

Office Space for Lease

201 E Partridge Ave,
Independence, MO 64055



7,575 – 30,300 SF For Lease

Built in 1986 – Renovated in 2021

\$16.50 / SF Full Service – Tenant to handle internet, Interior Janitorial
and Insurance

4 Story Office Building

For more information, questions, or to schedule a tour of the property, please call Josh Haith



11415 West 87th Terrace Overland Park, KS 66214 (913) 888-3456

Josh Haith
Office: (913) 888-3456 x 7
Email: Josh@Haith.com
Website: www.haith.com

Property Details

7,575 – 30,300 SF

7,575 SF Per Floor Including Common Area (4 Stories)

Entire Floor for Lease

Rental Rate \$16.50 / SF Full Service

Parking Ratio 4.0 / 1000

Built In 1986

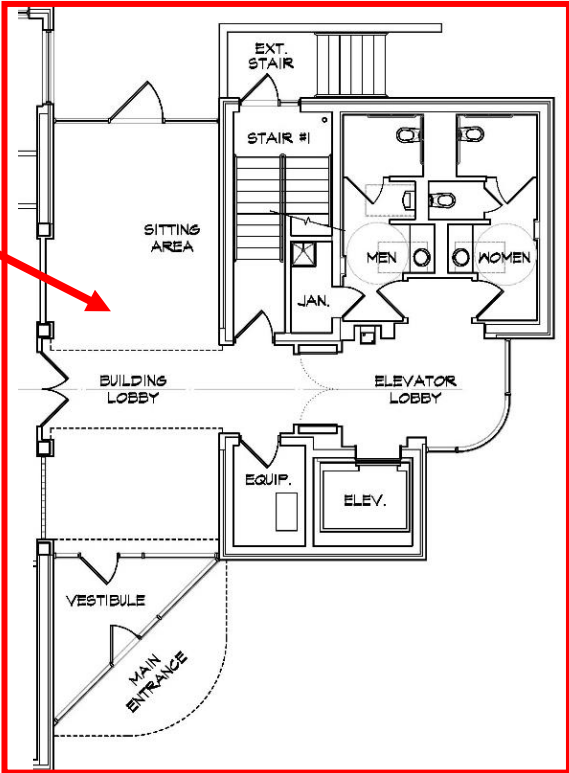
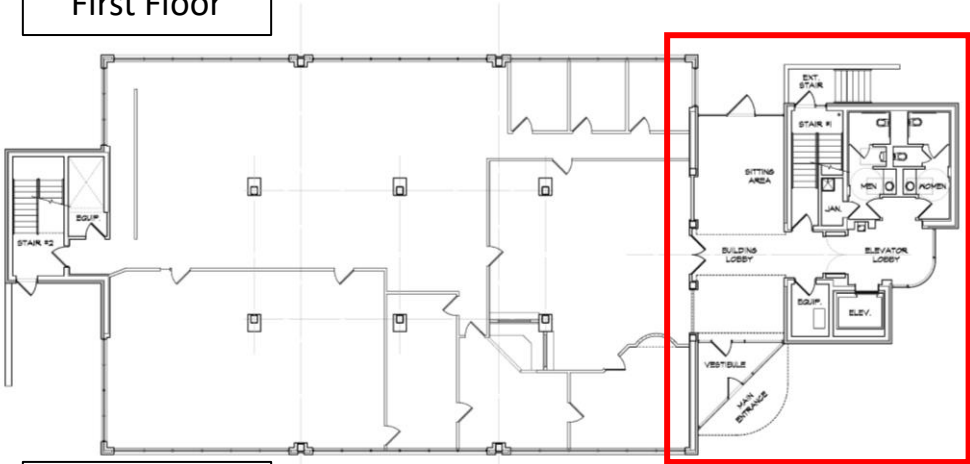
Extensive Renovations Completed 2021

- Roof
- HVAC
- Elevator
- Interior Finishes
- Utility Meters
- WIFI Thermostat
- LED Lights
- Exterior Lighting
- Landscaping Including New Stone Retaining Wall
- Water and Drains in Columns on Each Floor
- 3rd Floor Break Area
- Restrooms
- Parking Lot

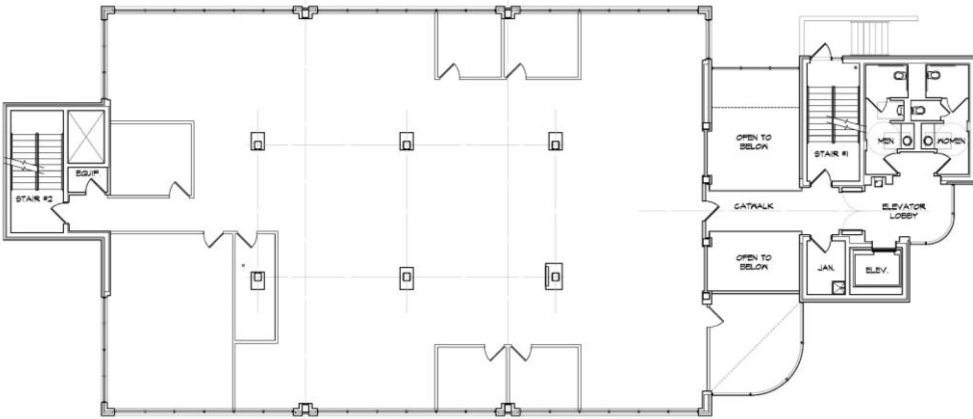


First Floor Common Area

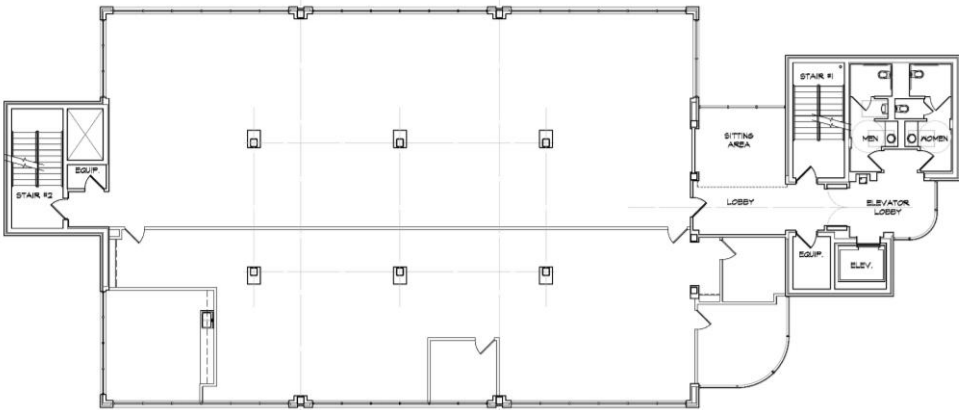
First Floor



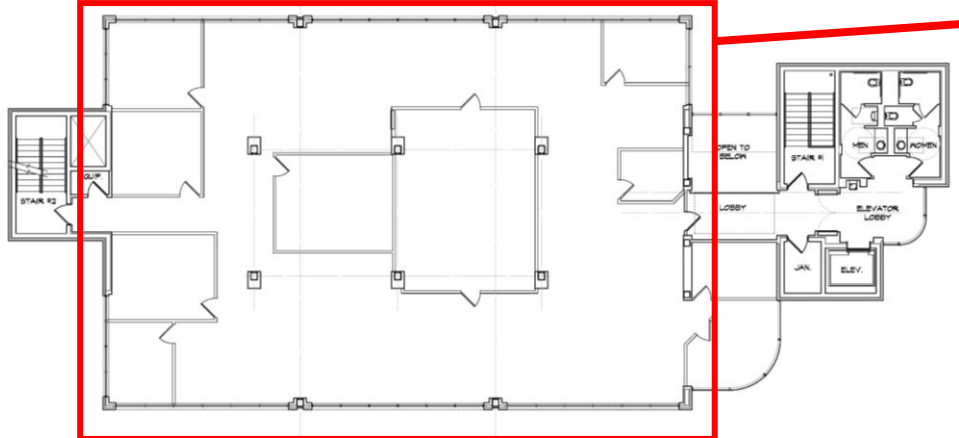
Second Floor

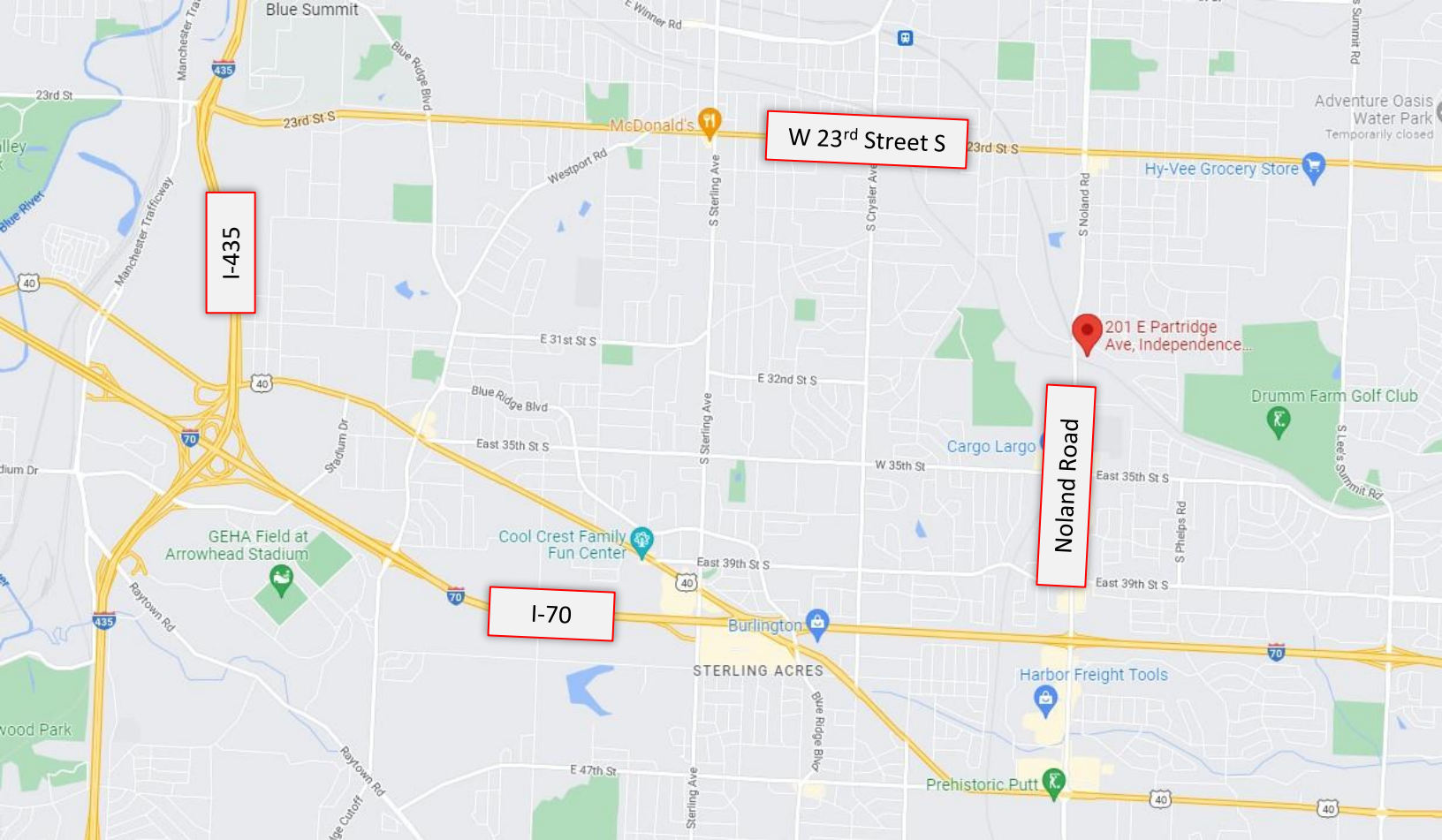


Third Floor



Fourth Floor





11415 West 87th Terrace Overland Park, KS 66214 (913) 888-3456

Josh Haith
Office: (913) 888-3456 x 7
Email: Josh@Haith.com
Website: www.haith.com