

846 E GRAND RIVER RD

HOWELL, MI 48843

PROPERTY SUMMARY



PROPERTY DESCRIPTION

Strong visibility near the northwest corner of Grand River Rd and N National St with up to 6012 Sq Ft available and a large parking lot allowing for more customers and greater business activity.

PROPERTY HIGHLIGHTS

OFFERING SUMMARY

Lease Rate:	Negotiable
Available SF:	2,934 - 6,000 SF
Building Size:	11,886 SF

DEMOGRAPHICS	1 MILE	3 MILES	5 MILES
Total Households	1,274	7,103	13,196
Total Population	2,873	16,855	33,071
Average HH Income	\$66,708	\$72,703	\$77,436

Presented By:

Legacy Commercial Property

847.904.9200

info@legacypro.com



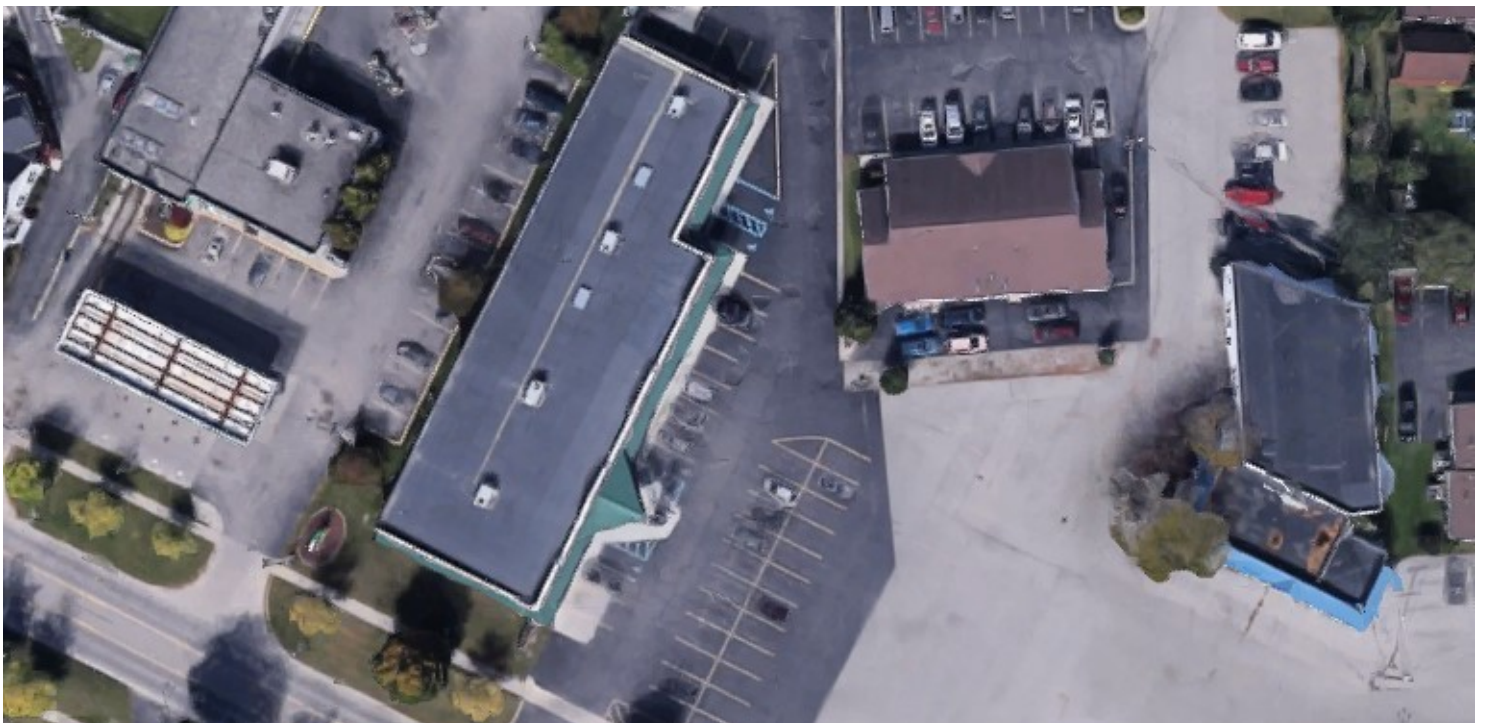
LEGACY
COMMERCIAL PROPERTY

2500 Lehigh Ave
Glenview, IL 60026
<http://legacypro.com>

846 E GRAND RIVER RD

HOWELL, MI 48843

ADDITIONAL PHOTOS



Presented By:

Legacy Commercial Property

847.904.9200

info@legacypro.com



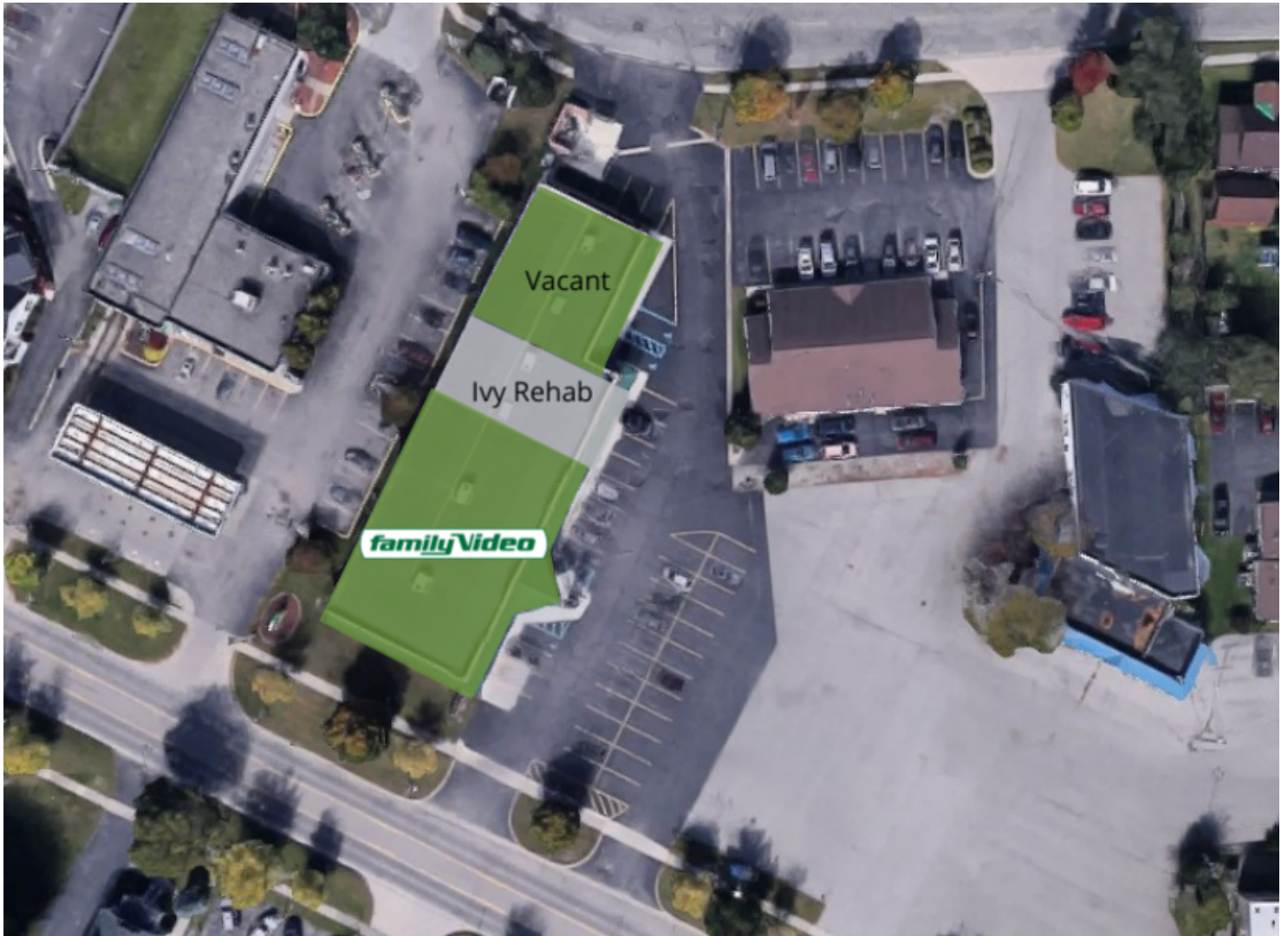
LEGACY
COMMERCIAL PROPERTY

2500 Lehigh Ave
Glenview, IL 60026
<http://legacypro.com>

846 E GRAND RIVER RD

HOWELL, MI 48843

SITE PLANS



Presented By:

Legacy Commercial Property

847.904.9200

info@legacypro.com



LEGACY
COMMERCIAL PROPERTY

2500 Lehigh Ave
Glenview, IL 60026
<http://legacypro.com>

846 E GRAND RIVER RD

HOWELL, MI 48843

RENT ROLL

TENANT NAME	UNIT NUMBER	UNIT SIZE (SF)	LEASE START	LEASE END	MONTHLY RENT
Vacant	A	6,000			\$0
Ivy Rehab Howell MI, LLC	B	2,941	8/15/2020	8/31/2025	\$0
					\$0
					\$0
Totals/Averages		8,941			\$0

Presented By:

Legacy Commercial Property

847.904.9200

info@legacypro.com



LEGACY
COMMERCIAL PROPERTY

2500 Lehigh Ave
Glenview, IL 60026
<http://legacypro.com>