

3009 UNION RD

ORCHARD PARK, NY 14127

PROPERTY SUMMARY



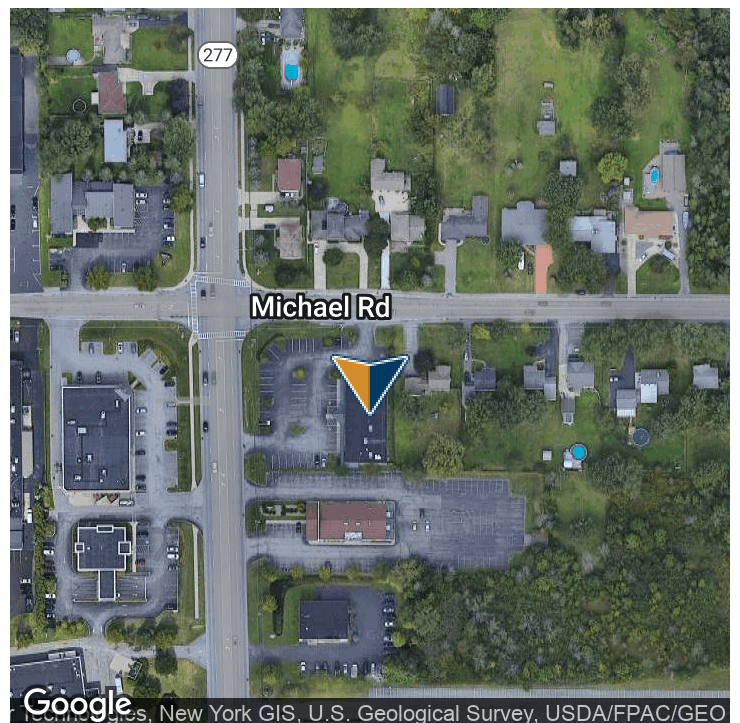
PROPERTY DESCRIPTION

Strong visibility on the southeast corner of Michael Rd and Union Rd with long term tenants.

OFFERING SUMMARY

Lease Rate:	N/A
Number of Units:	3
Available SF:	
Building Size:	8,580 SF

SPACES	LEASE RATE		SPACE SIZE
DEMOGRAPHICS	1 MILE	3 MILES	5 MILES
Total Households	2,386	18,552	54,580
Total Population	5,997	44,723	129,860
Average HH Income	\$76,114	\$72,049	\$66,378



Presented By:

Legacy Commercial Property

847.904.9200

info@legacypro.com



LEGACY
COMMERCIAL PROPERTY

2500 Lehigh Ave
Glenview, IL 60026
<http://legacypro.com>

3009 UNION RD

ORCHARD PARK, NY 14127

ADDITIONAL PHOTOS



Presented By:

Legacy Commercial Property

847.904.9200

info@legacypro.com



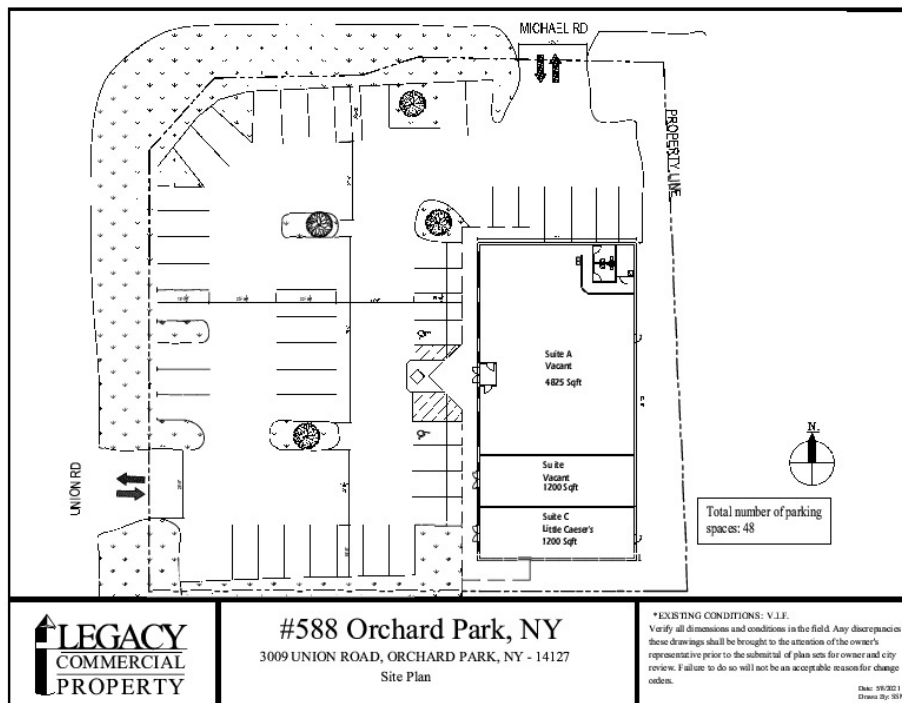
LEGACY
COMMERCIAL PROPERTY

2500 Lehigh Ave
Glenview, IL 60026
<http://legacypro.com>

3009 UNION RD

ORCHARD PARK, NY 14127

SITE PLANS



Presented By:

Legacy Commercial Property

847.904.9200

info@legacypro.com



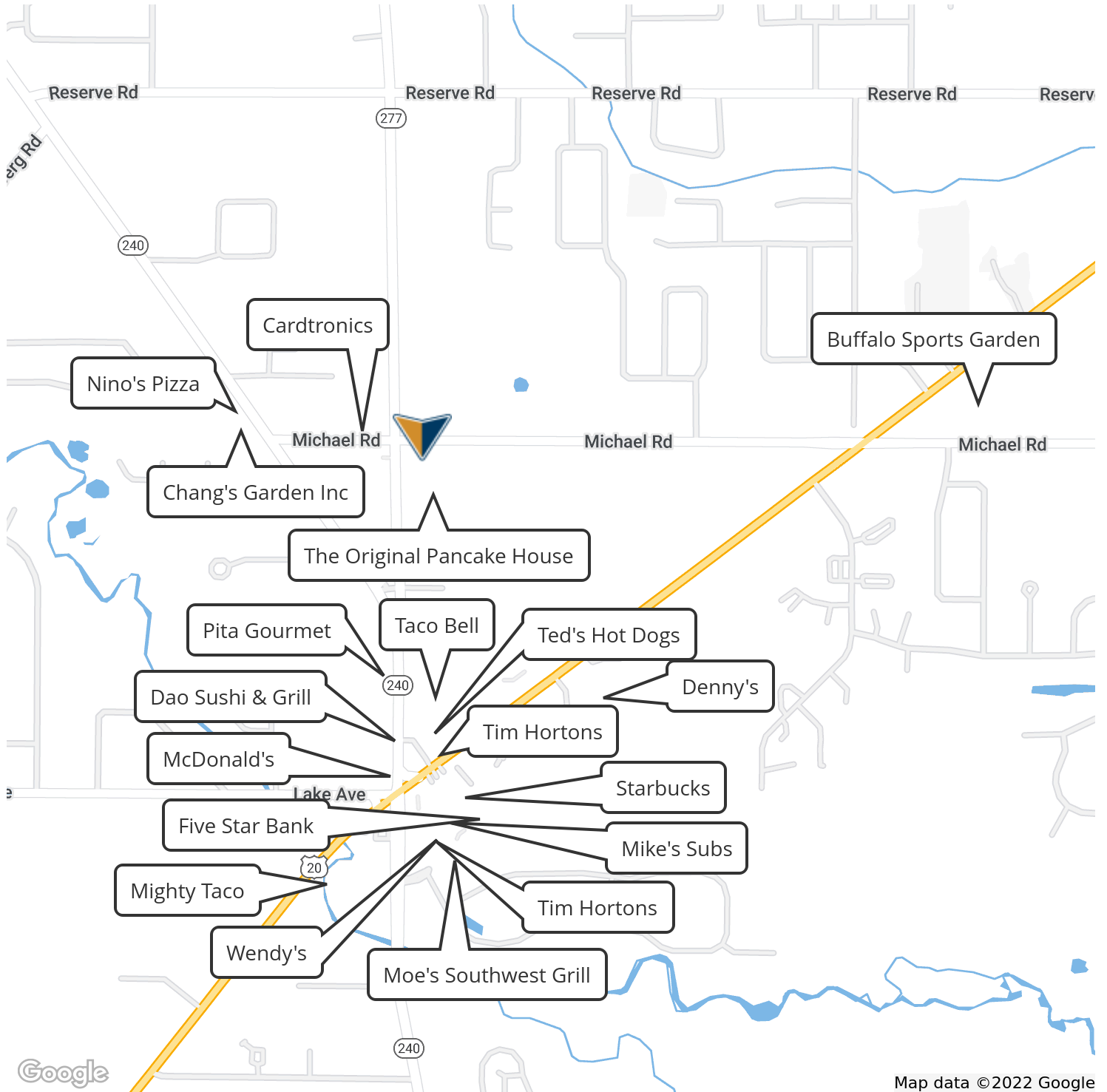
LEGACY
COMMERCIAL PROPERTY

2500 Lehigh Ave
Glenview, IL 60026
<http://legacypro.com>

3009 UNION RD

ORCHARD PARK, NY 14127

RETAILER MAP



Map data ©2022 Google

Presented By:

Legacy Commercial Property

847.904.9200

info@legacypro.com



LEGACY
COMMERCIAL PROPERTY

2500 Lehigh Ave
Glenview, IL 60026
<http://legacypro.com>